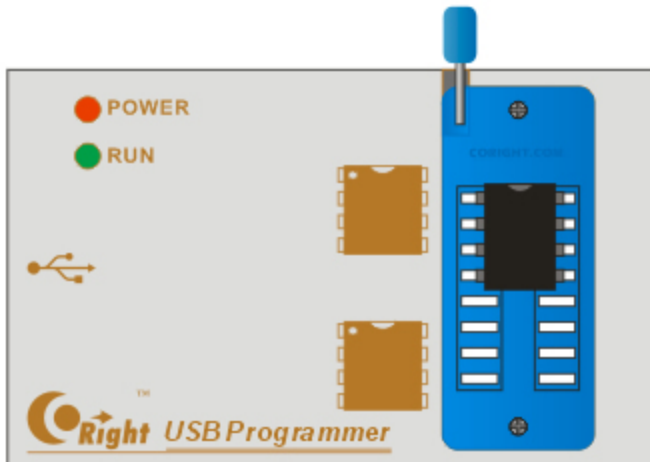


Overview



- EP01 is a High-Speed USB programmer produced by CORIGHT.
- EP01 support 25 FLASH, 24 EEPROM, 25 EEPROM, 93 EEPROM, etc.
- EP01 support mass production mode.
- EP01 support off-line chip copy.
- EP01 support rolling code chip(HCS series).
- EP01 Safe, High-Speed, Portable.

[[Features](#)]

[[System Requirements](#)]

[[End-user license agreement](#)]

[Copyright © 2010-2012 CORIGHT.COM All rights reserved.](#)

Features

- Compactness and portability.
- Built-in self recovery fuse to provide ongoing protection of equipment.
- USB 2.0 interface, the speed is up to 12Mbps.
- Support rolling code chip(HCS series).
- Support 24 EEPROM, 25 EEPROM, 93 EEPROM, SPI FLASH etc.
- Support mass production mode.
- Support off-line chip copy.
- Auto detect chip modles.
- Software and firmware upgrades automatically.
- Support for multiple languages, modify or add any language.
- Friendly buffer edit window.

- Support for Windows 2000, Windows XP, Windows Vista, Windows 7, Windows 8.

[[Overview](#)]

[Copyright © 2010-2012 CORIGHT.COM All rights reserved.](#)

System Requirements

Minimum System Requirements:

- Operating system: Win2000/XP/Vista/7/8。
- Resolution: 1024*768。
- USB1.0 standard of universal serial bus (usb) interface.
- A cd-rom drive.
- 64M of RAM.
- At least 10M hard disk space.

[[Overview](#)]

支持芯片列表

*****滚动码芯片

*****HCS301; HCS300; HCS201;
HCS200; HCS101;

*****24

EEPROM*****

ATMEL: AT24C01; AT24C01A; AT24C01B; AT24C02;
AT24C02A; AT24C02B; AT24C04; AT24C04A; AT24C04B;
AT24C08; AT24C08A; AT24C08B; AT24C16; AT24C16A;
AT24C16B; AT24C32; AT24C32A; AT24C32B; AT24C64;
AT24C64A; AT24C64B; AT24C128; AT24C128A; AT24C128B;
AT24C256; AT24C256A; AT24C256B; AT24C512; AT24C512A;
AT24C512B; AT24C1024; AT24C1024A; AT24C1024B;

CATALYST: CAT24C01; CAT24C02; CAT24C04; CAT24C08;
CAT24C16; CAT24C32; CAT24C64; CAT24C128; CAT24C256;
CAT24C512; CAT24C1024;

CORIGHT: 24C01; 24C02; 24C04; 24C08; 24C16; 24C32;
24C64; 24C128; 24C256; 24C512; 24C1024;

FAIRCHILD: FM24C01; FM24C02; FM24C03; FM24C04;
FM24C05; FM24C08; FM24C09; FM24C16; FM24C17;
FM24C32; FM24C64; FM24C128; FM24C256; FM24C512;

FM24C1024;

HOLTEK: HT24C01; HT24LC01; HT24C02; HT24LC02;
HT24C04; HT24LC04; HT24C08; HT24LC08; HT24C16;
HT24LC16; HT24C32; HT24LC32; HT24C64; HT24LC64;
HT24C128; HT24LC128; HT24C256; HT24LC256; HT24C512;
HT24C1024;

ISSI: IS24C01; IS24C02; IS24C04; IS24C08; IS24C16;
IS24C32; IS24C64; IS24C128; IS24C256; IS24C512;
IS24C1024;

MICROCHIP: 24AA00; 24LC00; 24FC00; 24AA01; 24LC01;
24FC01; 24AA02; 24LC02; 24FC02; 24AA04; 24LC04;
24FC04; 24AA08; 24LC08; 24FC08; 24AA16; 24LC16;
24FC16; 24AA32; 24LC32; 24FC32; 24AA64; 24LC64;
24FC64; 24AA128; 24LC128; 24FC128; 24AA256; 24LC256;
24FC256; 24AA512; 24LC512; 24FC512; 24AA1026;
24LC1026; 24FC1026;

NSC: 24C02; 24C02L; 24C64;

NXP: PCA24S08A;

RAMTRON: FM24C04A; FM24CL04; FM24C16A; FM24CL16;
FM24C64; FM24CL64; FM24C256; FM24CL256; FM24C512;

ROHM: BR24C01; BR24L01; BR24C02; BR24L02; BR24C04;
BR24L04; BR24C08; BR24L08; BR24C16; BR24L16;
BR24C32; BR24L32; BR24C64; BR24L64;

ST: ST24C01; ST24C02; ST24C04; ST24C08; ST24C16;

ST24C32; ST24C64;

XICOR: ST24C01; ST24C02; ST24C04; ST24C08; ST24C16;

*****25

EEPROM*****

ATMEL: AT25010; AT25020; AT25040; AT25080; AT25160;

AT25320; AT25640; AT25128; AT25256; AT25512;

CATALYST: CAT25C01; CAT25C01P; CAT25C01S;

CAT25C01U; CAT25C02P; CAT25C02S; CAT25C02U;

CAT25C03P; CAT25C03S; CAT25C03U; CAT25C04P;

CAT25C04S; CAT25C04U; CAT25C05P; CAT25C05S;

CAT25C05U; CAT25C08P; CAT25C08S; CAT25C08U;

CAT25C09P; CAT25C09S; CAT25C09U; CAT25C16P;

CAT25C16S; CAT25C16U; CAT25C17P; CAT25C17S;

CAT25C17U; CAT25C32P; CAT25C32S; CAT25C33P;

CAT25C33S; CAT25C64P; CAT25C64S; CAT25C65P;

CAT25C65S; CAT25C128P; CAT25C128S; CAT25C256P;

CAT25C256S;

CORIGHT: 25C01; 25C01; 25C040; 25C080; 25C160;

25C320; 25C640; 25C128; 25C256;

MICROCHIP: 25C040; 25C080; 25C160; 25C320; 25C640;

25LC040; 25LC080; 25LC160; 25LC320; 25LC640; 25LC128;

25LC256; 25AA040; 25AA080; 25AA160; 25AA320;

25AA640; 25AA128; 25AA256;

RAMTRON: FM25C160; FM25640; FM25CL64;
ST: ST25C01; ST25C02; ST25C04; ST25C08; ST25C16;
ST25W01; ST25W02; ST25W04; ST25W08; ST25W16;
M95010; M95020; M95040; M95080; M95160; M95320;
M95640; M95128; M95256; M95512;
TI: TI2532; TI2532A; TI2564;
XICOR: X25010; X25020; X25040; X25080; X25160;
X25320; X25640; X25128; X25256; X25512;

*****93

EEPROM*****

ACE: ACE93C46-16bit; ACE93C46-8bit;
AKM: AK93C45A; AK93C55A; AK93C65A; AK93C75A;
ATC: ATC93C46-16bit; ATC93C46-8bit; ATC93C56-16bit;
ATC93C56-8bit; ATC93C66-16bit; ATC93C66-8bit; ATC93C86-
16bit; ATC93C86-8bit;
ATMEL: 93C46-16bit; 93C46-8bit; 93C56-16bit; 93C56-8bit;
93C66-16bit; 93C66-8bit; 93C76-16bit; 93C76-8bit; 93C86-
16bit; 93C86-8bit;
CATALYST: CAT93C46-16bit; CAT93C46-8bit; CAT93C56-
16bit; CAT93C56-8bit; CAT93C57-16bit; CAT93C57-8bit;
CAT93C66-16bit; CAT93C66-8bit; CAT93C86-16bit;
CAT93C86-8bit;
CORIGHT: 93C06; 93C46-16bit; 93C46-8bit; 93C56-16bit;

93C56-8bit; 93C66-16bit; 93C66-8bit; 93C76-16bit; 93C76-8bit; 93C86-16bit; 93C86-8bit;

EXEL: XL93C06; XL93C46; XL93CS46; XL93LC46; XL93C56; XL93LC56; XL93C66; XL93LC66;

FAIRCHILD: FM93C06; FM93C46; FM93C46A-16bit; FM93C46A-8bit; FM93C56; FM93C56A-16bit; FM93C56A-8bit; FM93C66; FM93C66A-16bit; FM93C66A-8bit; FM93C86A-16bit; FM93C86A-8bit;

HOLTEK: HT93LC46-16bit; HT93LC46-8bit; HT93LC56-16bit; HT93LC56-8bit; HT93LC66-16bit; HT93LC66-8bit;

ICT: ICT93C46-16bit; ICT93C46-8bit; ICT93C56-16bit; ICT93C56-8bit; ICT93C66-16bit; ICT93C66-8bit;

ISSI: IS93C46; IS93C46A-16bit; IS93C46A-8bit; IS93C56; IS93C56A-16bit; IS93C56A-8bit; IS93C66; IS93C66A-16bit; IS93C66A-8bit; IS93C76A-16bit; IS93C76A-8bit; IS93C86A-16bit; IS93C86A-8bit;

MICROCHIP: 93C06; 93C46-16bit; 93C46-8bit; 93C56-16bit; 93C56-8bit; 93C66-16bit; 93C66-8bit; 93C76-16bit; 93C76-8bit; 93C86-16bit; 93C86-8bit; 93C46B; 93C46A; 93C56B; 93C56A; 93C66B; 93C66A; 93LC46-16bit; 93LC46-8bit; 93LC56-16bit; 93LC56-8bit; 93LC66-16bit; 93LC66-8bit; 93LC76-16bit; 93LC76-8bit; 93LC86-16bit; 93LC86-8bit; 93LC46B; 93LC46A; 93LC56B; 93LC56A; 93LC66B; 93LC66A; 93AA46-16bit; 93AA46-8bit; 93AA56-16bit;

93AA56-8bit; 93AA66-16bit; 93AA66-8bit; 93AA76-16bit;
93AA76-8bit; 93AA86-16bit; 93AA86-8bit;
NSC: 93C06; 93C46; 93C56; 93C66; 93C86; 93CS06;
93CS46; 93CS56; 93CS66; 93CS86;
ROHM: BR93LC46; BR93LC56; BR93LC66; BR93LC46RF;
BR93LC56RF; BR93LC66RF;
SEIKO: S-93C46A; S-93C56A; S-93C66A;
ST: ST93C06; ST93C46; ST93C56; ST93C66; M93S46;
M93S56; M93S66; M93S46R; M93S56R; M93S66R;
M93S46W; M93S56W; M93S66W;

*******SPI**

FLASH*****

ALTERA: EPCS1; EPCS4; EPCS16; EPCS64; EPCS128;
AMIC: A25L512; A25L010; A25L020; A25L040; A25L080;
A25L016; A25L032; A25L05PT; A25L05PU; A25L10PT;
A25L10PU; A25L20PT; A25L20PU; A25L40P; A25L80P;
A25L16PT; A25L16PU;
ATMEL: AT25F512; AT25F512A; AT25F512B; AT25F1024;
AT25F1024A; AT25F2048; AT25F4096; AT25FS010;
AT25FS020; AT25FS040; AT26F004; AT25DF021;
AT25DF041A; AT26DF081A; AT25DF161; AT26DF161;
AT26DF161A; AT25DF321; AT25DF321A; AT26DF321;
AT25DF641;

CORIGHT: 25 P05; 25 P10; 25 P20; 25 P40; 25 P80; 25 P16;
25 P32; 25 P64; 25 P128;

EON: EN25 P05; EN25 B05; EN25 B05 T; EN25 P10; EN25 B10;
EN25 B10 T; EN25 P20; EN25 B20; EN25 B20 T; EN25 P40;
EN25 B40; EN25 B40 T; EN25 P80; EN25 B80; EN25 B80 T;
EN25 P16; EN25 B16; EN25 B16 T; EN25 P32; EN25 B32;
EN25 B32 T; EN25 P64; EN25 B64; EN25 B64 T; EN25 F05;
EN25 LF05; EN25 F10; EN25 LF10; EN25 F20; EN25 LF20;
EN25 F40; EN25 LF40; EN25 F80; EN25 F16; EN25 F32;
EN25 F64; EN25 F128; EN25 Q80A; EN25 Q16; EN25 Q16A;
EN25 Q32A; EN25 Q32B; EN25 Q64; EN25 Q128; EN25 D10;
EN25 D20; EN25 D40; EN25 D80; EN25 D16; EN25 T80;
EN25 T16;

ESMT: F25 L004A; F25 L004AT; F25 L04UA; F25 L008A;
F25 L008AT; F25 L08PA; F25 L016A; F25 L016AT; F25 L16PA;
F25 L32PA; F25 L32QA;

EXCELSEMI: ES25 P10; ES25 P20; ES25 P40; ES25 P80;
ES25 P16; ES25 P32; ES25 M40; ES25 M40A; ES25 M80;
ES25 M80A; ES25 M16; ES25 M16A;

GIGADEVICE: GD25 Q5 12; GD25 Q10; GD25 Q20B;
GD25 Q40B; GD25 Q80B; GD25 Q16B; GD25 Q32B;
GD25 Q64B; GD25 Q128B; GD25 Q128C;

MICRON: M25 P05; M25 P10; M25 P20; M25 P40; M25 P80;
M25 P16; M25 P32; M25 P64; M25 P128; N25 Q032; N25 Q064;

N25Q128; N25Q128A; N25Q256A;

MXIC: MX25L512; MX25V512; MX25L1005; MX25L2005;
MX25L4005A; MX25V4005; MX25L8005; MX25V8005;
MX25L1605D; MX25L1606E; MX25L1635D; MX25L1633E;
MX25L3205D; MX25L3206E; MX25L3225D; MX25L3235D;
MX25L3237D; MX25L6405D; MX25L6406E; MX25L12805D;
MX25L12835E; MX25L12845E; MX25L25635E;
MX25L25735E; MX25V4035; MX25V8035;

NEXFLASH: NX25P10; NX25P20; NX25P40; NX25P80;
NX25P16; NX25P32;

PMC: PM25LV512; PM25LV010; PM25LV020; PM25LV040;
PM25LV080B; PM25LV016B;

SAIFUN: SA25F005; SA25F010; SA25F020; SA25F040;
SA25F080; SA25F160; SA25F320;

SPANSION: S25FL004A; S25FL008A; S25FL016A;
S25FL032A; S25FL064A; S25FL128S; S25FL256S;
S25FL512S;

SST: SST25VF512; SST25VF010; SST25VF020; SST25VF040;
SST25VF080; SST25VF512A; SST25VF010A; SST25VF020A;
SST25VF040A; SST25VF080A; SST25LF512A; SST25LF010A;
SST25LF020A; SST25LF040A; SST25LF080A; SST25VF020B;
SST25VF040B; SST25VF080B; SST25VF016B; SST25VF032B;
SST25VF064C;

ST: M25P05A; M25P10A; M25P20A; M25P40A; M25P80A;

M25 P05; M25 P10; M25 P20; M25 P40; M25 P80; M25 P16;
M25 P32; M25 P64; M25 P128; M25 P05A; M25 P10A; M25 PE10;
M25 PE20; M25 PE40; M25 PE80; M25 PE16; M25 PX80;
M25 PX16; M25 PX32; M25 PX64;

WINBOND: W25 P10; W25 X10; W25 X10A; W25 X10AL;
W25 X10L; W25 P20; W25 X20; W25 X20A; W25 X20AL;
W25 X20L; W25 P40; W25 X40; W25 X40A; W25 X40AL;
W25 X40L; W25 P80; W25 X80; W25 X80A; W25 X80AL;
W25 X80L; W25 P16; W25 X16; W25 P32; W25 X32; W25 X64;
W25 Q20; W25 Q40; W25 Q80; W25 Q16; W25 Q32; W25 Q64;
W25 Q128; W25 Q256;

End-user license agreement

IMPORTANT-READ CAREFULLY:

This End-User License Agreement is a legal agreement between you (either an individual or a single entity) and CORIGHT for the software product identified above, which includes computer software and may include associated media, printed materials, and "online" or electronic documentation ("SOFTWARE PRODUCT"). By installing, copying, or otherwise using the SOFTWARE PRODUCT, you agree to be bound by the terms of this LICENSE AGREEMENT.

If you do not agree to the terms of this LICENSE AGREEMENT, do not install or use the SOFTWARE PRODUCT. Please do NOT order a registration key, if you do not agree to this license agreement.

License conditions

No part of the software or the manual may be multiplied, disseminated or processed in any way without the written consent of CORIGHT. Violations of these conditions will be prosecuted in every case.

The use of the software is done at your own risk. The manufacturer and developer accepts no liability for any damages, either as direct or indirect consequence of the use of this product or software.

Only observance of these conditions allows you to use the hardware and software in your computer system.

All rights reserved.

Copyright 2010-2012 CORIGHT.

SOFTWARE PRODUCT LICENSE

The SOFTWARE PRODUCT is protected by copyright laws and international copyright treaties, as well as other intellectual property laws and treaties. The SOFTWARE PRODUCT is licensed, not sold. This also applies to demo versions.

GRANT OF LICENSE. This LICENSE AGREEMENT grants you the following rights:

Applications Software.

You may install and use one copy of the SOFTWARE PRODUCT, or any prior version for the same operating system, on a single computer. The primary user of the

computer on which the SOFTWARE PRODUCT is installed may make a second copy for his or her exclusive use.

Storage/Network Use.

You may also store or install a copy of the SOFTWARE PRODUCT on a storage device, such as a network server, used only to install or run the SOFTWARE PRODUCT on your other computers over an internal network; however, you must acquire and dedicate a license for each separate computer on which the SOFTWARE PRODUCT is installed or run from the storage device. A license for the SOFTWARE PRODUCT may not be shared or used concurrently on different computers.

OEM License.

If you obtained this license agreement together with a hardware product, you are allowed to use this SOFTWARE PRODUCT as a part of the Hard- and Software package according to this license agreement.

DESCRIPTION OF OTHER RIGHTS AND LIMITATIONS.

Demo Version.

Even if the SOFTWARE PRODUCT is a demonstration version, it is protected by copyright laws and international copyright

treaties, as well as other intellectual property laws and treaties.

Limitations on Reverse Engineering, Decompilation, and Disassembly. You may not reverse engineer, decompile, or disassemble the SOFTWARE PRODUCT, except and only to the extent that such activity is expressly permitted by applicable law notwithstanding this limitation. This also applies to Demo versions.

Separation of Components.

The SOFTWARE PRODUCT is licensed as a single product. Its component parts may not be separated for use on more than one computer. This also applies to Demo versions.

Rental.

You may not rent, lease, or lend the SOFTWARE PRODUCT. This also applies to Demo versions.

Software Transfer.

You may not transfer the SOFTWARE to another individual or organization. There are absolutely no exceptions.

Termination.

The license to use the SOFTWARE PRODUCT ends at the 31st of December, 2100.

The license to use the SOFTWARE PRODUCT ends, if you pass your personal registration key to another individual or organization.

Without prejudice to any other rights, CORIGHT may terminate this LICENSE AGREEMENT if you fail to comply with the terms and conditions of this LICENSE AGREEMENT. In such event, you must destroy all copies of the SOFTWARE PRODUCT and all of its component parts.

UPGRADES.

If the SOFTWARE PRODUCT is labeled as an upgrade, you must be properly licensed to use a product identified by CORIGHT as being eligible for the upgrade in order to use the SOFTWARE PRODUCT.

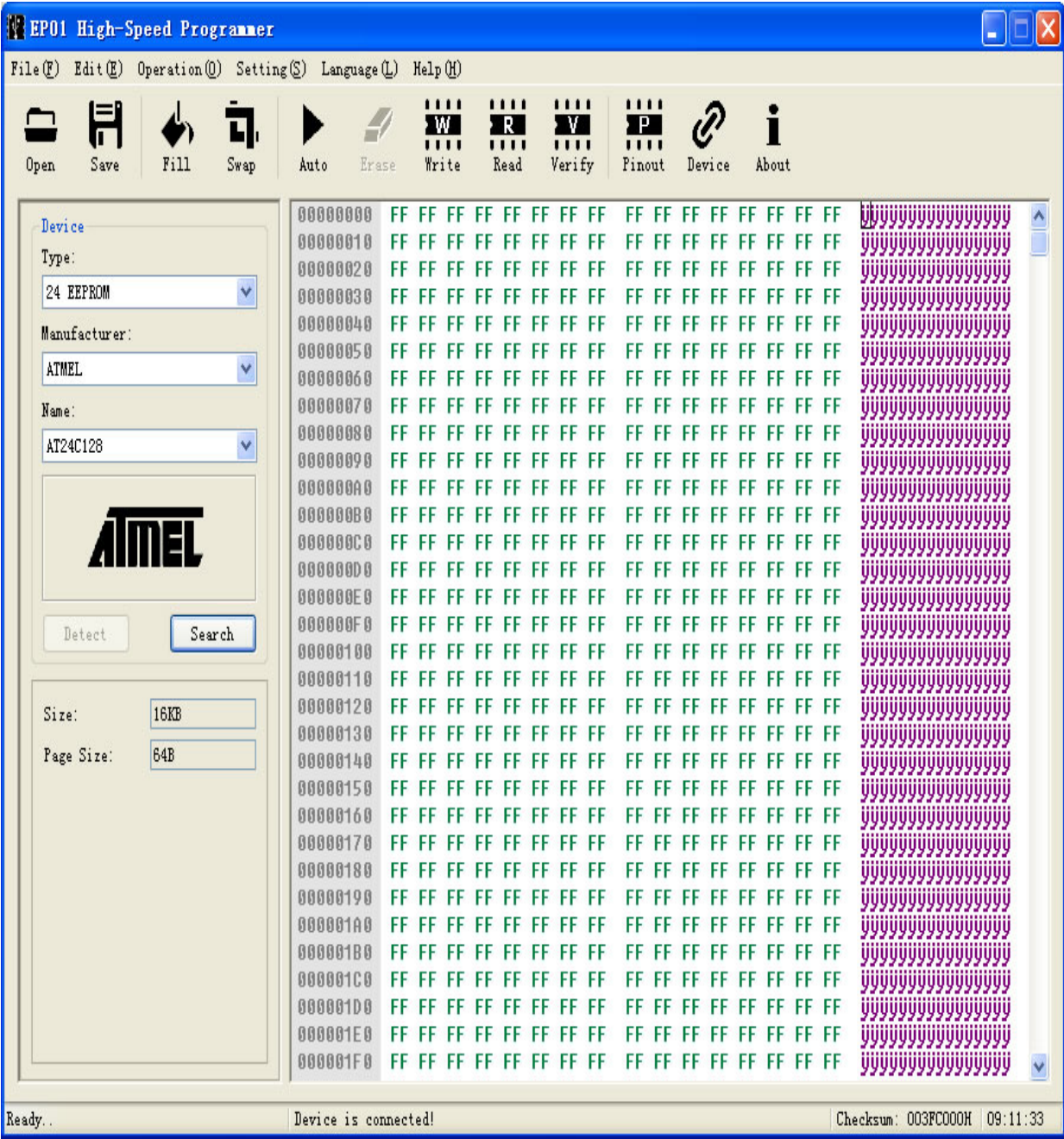
A SOFTWARE PRODUCT labeled as an upgrade replaces and/or supplements the product that formed the basis for your eligibility for the upgrade. You may use the resulting upgraded product only in accordance with the terms of this LICENSE AGREEMENT. If the SOFTWARE PRODUCT is an upgrade of a component of a package of software programs that you licensed as a single product, the SOFTWARE PRODUCT may be used and transferred only as part of that single product package and may not be separated for use on more than one computer.

END of document

[Copyright © 2010-2012 CORIGHT.COM All rights reserved.](http://CORIGHT.COM)

User Interface

EP01 has friendly user interface, menus, toolbars, concise and easy to use, the software interface is as follows:



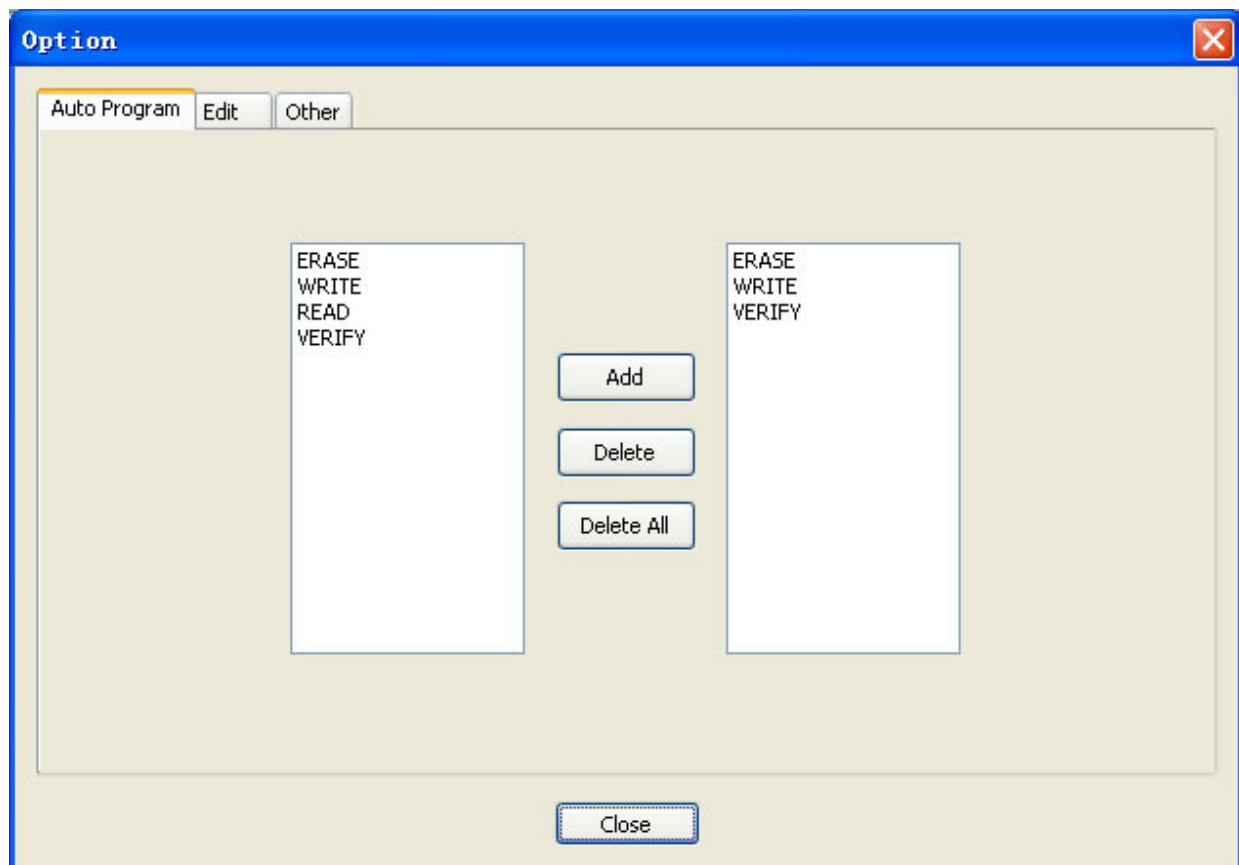
EP01 toolbar:



- Open: Load a file into the buffer.
- Save: Save the buffer to a file.
- Fill: Fill the specified buffer data segment for a specified value.
- Swap: Swap two adjacent bytes.
- Auto: Automatically complete the programming operation.
- Erase: Erase chip data (set to 1).
- Write: Write the data in buffer into the chip.
- Read: Read the chip data into the buffer.
- Verify: Compare the data in buffer with the data in chip.
- Pinout: View the current chip pin configuration.
- Device: Check the equipment model and version information.
- About: Displays program information, version number and copyright about.

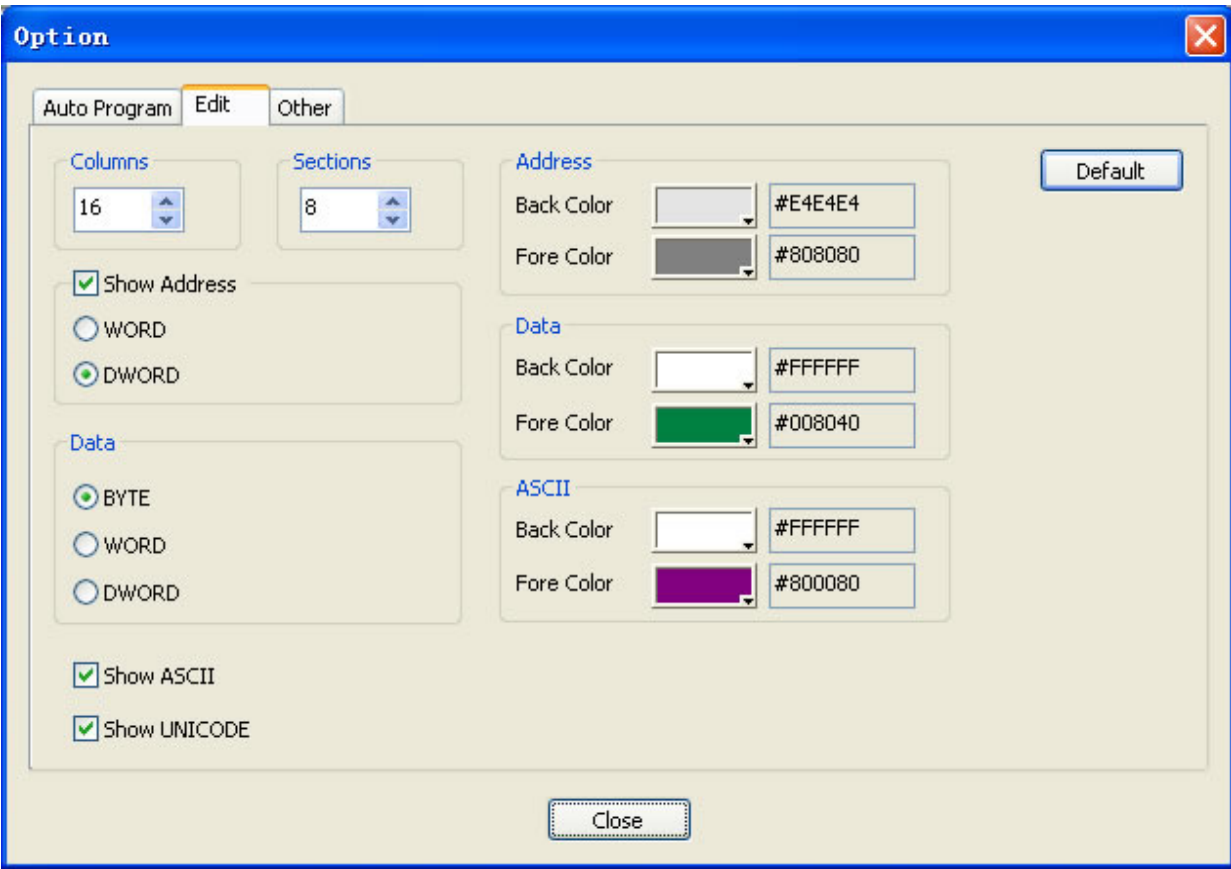
Options

Automatic Programming:



- Through the "add", "delete", "empty" operation and mouse click to edit the content of "Automatic Programming".
- Repeat operation support.

Editor:

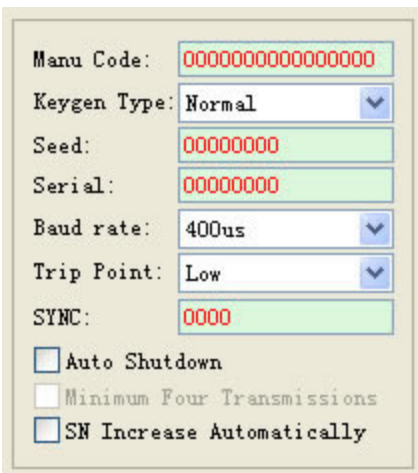


- Columns: The columns of the data.
- Sections: The sections numbers of the data in a line.
- Show Address: Whether to display the data address.
- Data: Data display mode.
- Show ASCII: Whether to display character area.
- Show UNICODE: Whether to show the UNICODE character (available only when "Show ASCII" is checked).
- Fore Color: The font color of each region.
- Back Color: The background color of each area.
- Default: Restore the Settings on this page to default values.

[Copyright © 2010-2012 CORIGHT.COM All rights reserved.](#)

Rolling Code

Interface:



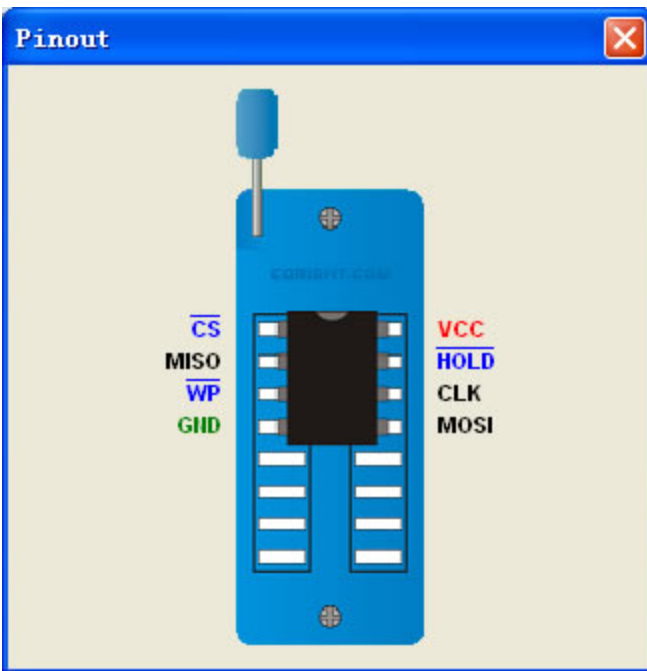
The screenshot shows a configuration window with the following fields and options:

- Manu Code: 0000000000000000
- Keygen Type: Normal (dropdown menu)
- Seed: 00000000
- Serial: 00000000
- Baud rate: 400us (dropdown menu)
- Trip Point: Low (dropdown menu)
- SYNC: 0000
- Auto Shutdown
- Minimum Four Transmissions
- SN Increase Automatically

- According to different choice chip set interface will change.
- Support for all four encoding style: Simple, Normal, Secure XOR, Secure the Decrypt.
- All 24 bytes of data can be modified to meet all requirements.
- Rolling code chip is a "write-only" chip, so EP01 provide only "written" function.
- Check operation followed by writing data immediately, and the results are given.

Pinout

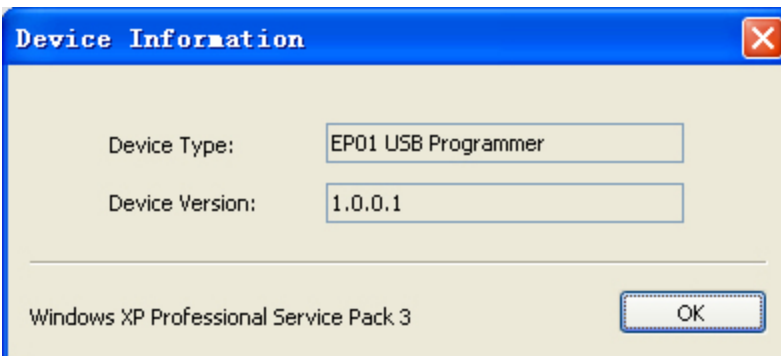
Interface:



- View the pin configuration of current chip.
- Recommend to check the pin configuration before replacing chips, to avoid operation fails.

Device information

Interface:



- Device Type: Displays the current device models.
- Device Version: Displays the current device firmware version.

Language Setting

- EP01 support multilingual language (up to 1000 countries).
- EP01 provide "English", "Simplified Chinese", "Traditional Chinese" three languages as default.
- Modify or add any language according to need.

Modify Language:

- Open the language file in the folder "Language".
- Modify the text.
- Save and restart EP01 software.

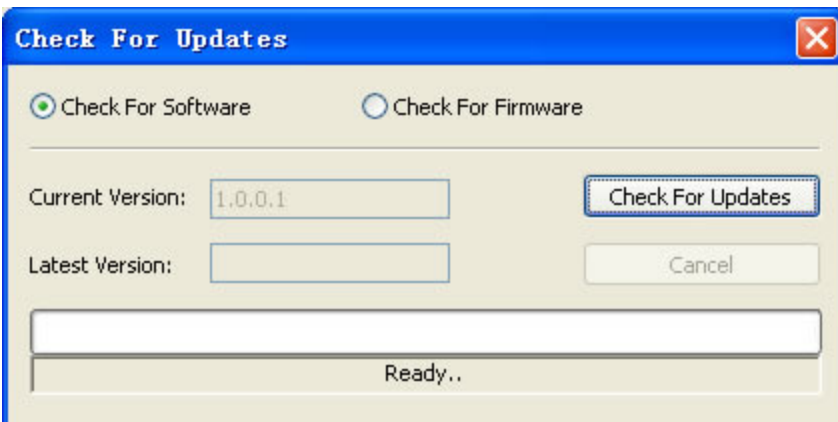
Add Language:

- Enter the "Language" folder.
 - Copy any existing language file as a new one.
 - Edit the new language file.
 - Set the string "Language" in section "[Setting]" to a new value (show as new language name).
-

[Copyright © 2010-2012 CORIGHT.COM All rights reserved.](#)

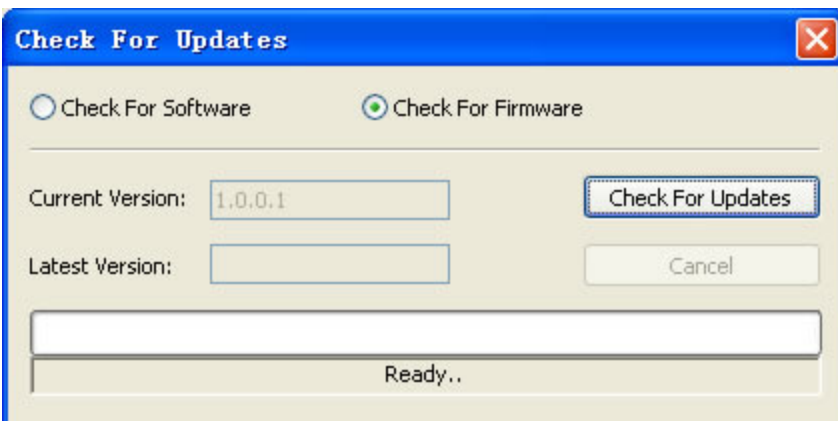
Check For Updates

Check the software update:



- Select "Check For Software";
- Click on the "check update", follow the prompts and complete the operation.

Check the firmware update:



- Select "Check For Firmware";
- Click on the "Check For Updates", follow the prompts and download the latest firmware file to local disk.
- Upgrade equipment through "[Update Firmware](#)".

Get the latest version of the application online:

- Access the update files via
browser: <http://www.coright.com/products>

Update Firmware

- Get the latest firmware through "[Check Update](#)" operation.
- Click the menu "Help"-> "Update Firmware".
- Select the latest firmware file, follow the prompts and complete the operation.

Automatic Programming

- Auto complete "erase", "write", "check", "read" combined operations.
- Specific combination of operations can be modified through the "[Options](#)".

Erase

- Erase chip data (set to 1).
- Some SPI FLASH chip must be erased before writing data operation.
- When some chip does not support the erase operation is selected, the "erase" option will be disabled.

Write

- Write the data in buffer into the chip.
- Some SPI FLASH chip must be [erased](#) before writing data operation.

Read

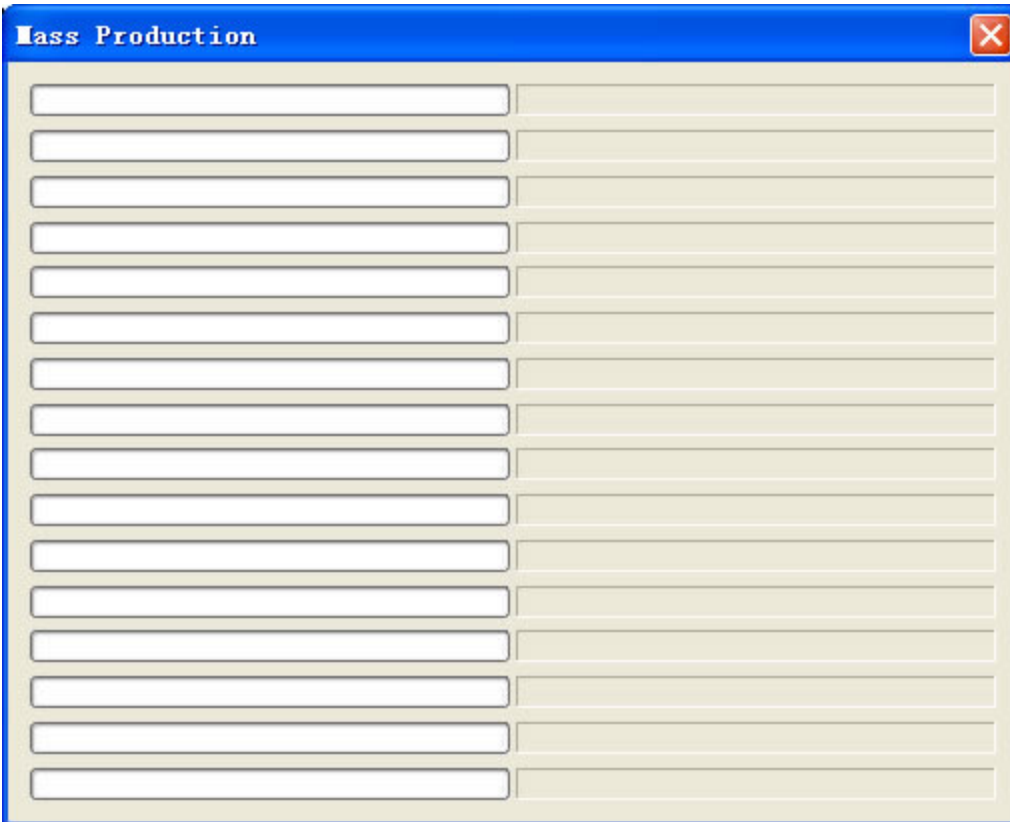
- Read the chip data into the buffer.
- When some of the chip (HCS series) does not support read operation is selected, "read" option will be disabled.

Verify

- Compare the data in buffer with the data in chip.
- When some chips (HCS series) which do not support checking operation is selected, the "check" option will be disabled.

Mass Production

Interface:



- Each computer can be connected to an unlimited number of devices (only the first 16 devices will show progress and status).
- The equipment does not interfere with each other (replace chip or plug devices or remove devices at any time is permitted).

- Automatically detects whether the chip is ready and enter the programming mode(perform automatic programming of setting).
- Exit this window to exit the production mode (all equipment in a ready state required).

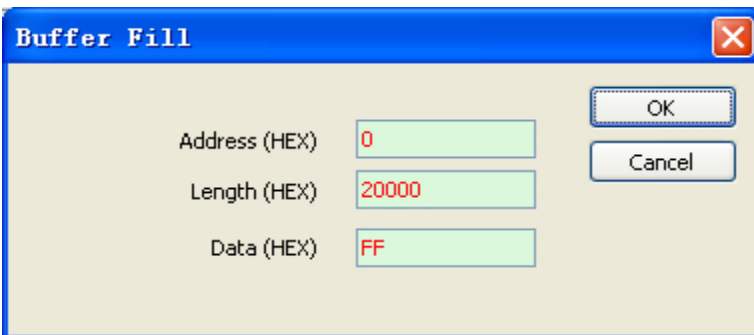
Self Check

- Check if there is hardware failure or not.
- Please remove the chip before self-checking, otherwise will be prompted to self-test failure.

[Copyright © 2010-2012 CORIGHT.COM All rights reserved.](#)

Fill

Interface:



- Fill the specified buffer data segment for a specified value.
- Automatic computing start address and length of the buffer to be filled.
- Did not select any data: address is set to 0, the length is equal to the length of the buffer.
- If you have selected data: address is set to the selected data starting position, the length is equal to the selected data length.

Location

Interface:



- Target Address : The position want to go.
- Current Address : Current position.
- Click on the button "Go" to jump to the target address.
- Click on the button "Cancel" to quit.

FAQ

1. Write data failure (1)Check the chip and pin configuration before writing operation.

(2)Some SPI FLASH chips must be erased before writing operation.

(3)Memory chips might have been damaged.

(4)Programmer is faulty,[Update](#) the latest software and firmware.

Contact Us

If you encounter problems in using or you have any good Suggestions to the software, please contact us through the following way:

Through our website:

<http://www.coright.com/>

By E-mail:

sales@coright.com

[Copyright © 2010-2012 CORIGHT.COM All rights reserved.](#)