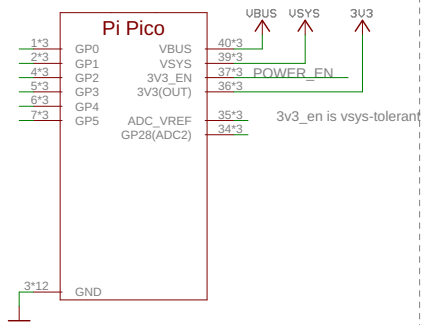


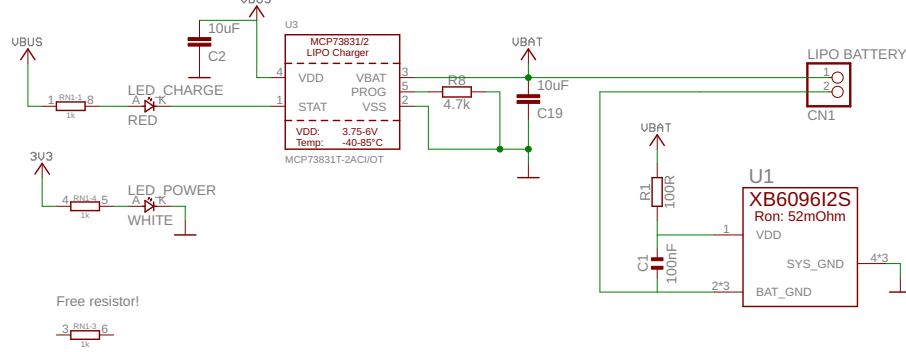
Lipo SHIM for Pico (PIM557)

Pico connector

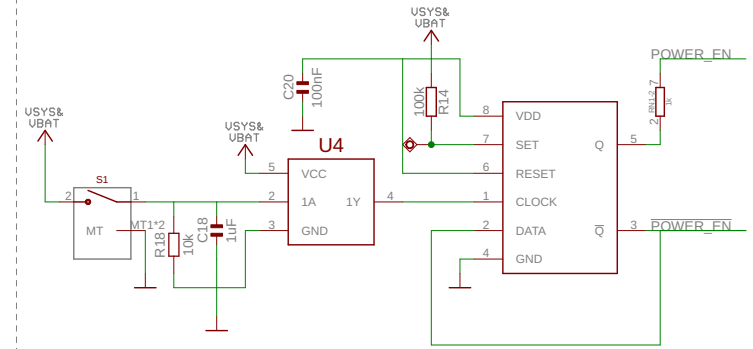


Lipo charger, protection and connector

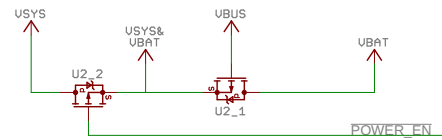
4.7k on PROG sets charge current limit to ~220mA.



Power switch toggle circuit



U_{sys} & U_{bat} switching FET



Typical discharge power path resistance:
 XB609612S: 52mOhm
 DMP2075UFDB: 64mOhm

->

$52 + 2 \cdot 64 = 180\text{mOhm}$
 Voltage drop at 1A = 180mV