



# USB Autofocus Camera Module



8MP IMX219  
(SKU: B0292)

## QUICK START GUIDE

### SPECS

Camera	
Sensor	IMX219
Optical Size	1/4 inch
Resolution	8MP 3264H x 2448V
Data Format	MJPEG/YUY2
Frame rate	MJPEG 15fps@3264 x 2448, 30fps@1080P; YUY2 15fps@720P, 20fps@640 x 480
Lens	
Field of View (FOV)	60°(H)
Focusing Range	40mm to infinity
IR Sensitivity	Integral IR filter, visible light only
Functionality and Compatibility	
Auto Controlled Features	Brightness, Contrast, Saturation, Sharpness, Gamma, White balance.
System Compatibility	Win7/8/10, Linux, Mac and OS with UVC driver
Power	
Power Supply	DC 5V
Working Current	MAX 200mA
Physical	
Operating Temp.	-4°F~158°F (-20°C~+70°C)
Dimension	38x38mm
Hole Pitch	34x34mm, 28x28mm
Cable Length	Default 3.3ft (1M)

### INTRODUCTION

#### • About Arducam

Arducam has been a professional designer and manufacturer of SPI, MIPI, DVP and USB cameras since 2012. We also offer customized turnkey design and manufacturing solution services for customers who want their products to be unique.

#### • About this USB Camera

The B0292 is a new member of the Arducam's USB camera family. It's an 8MP, autofocus, UVC compliant, USB 2.0 camera. This USB camera is based on the 1/4" IMX219 image sensor, and you can read more about its specs in the next chapter. Arducam also provides the sample application that demonstrates some of the features of this camera.

#### • About UVC

The B0292 is a UVC-compliant camera. The native UVC drivers of Windows, Linux and Mac shall be compatible with this camera so that it does not require extra drivers to be installed.

#### • About Customer Service

If you need our help or want to customize other models of USB cameras, feel free to contact us at support@arducam.com

### QUICK START

#### • How to download the program

Download the APP Amcap from the following link <https://www.arducam.com/downloads/app/AMCap.exe>

#### NOTE:

1. If used with the Android device, USB Camera APP and connect adapter are needed.
2. For Mac OS, please open the native software facetime and select the video camera "USB Camera" .

#### • How to connect the camera

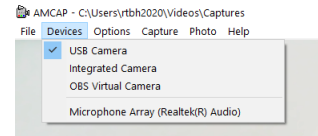
Connect the one end of the USB 2.0 cable to the USB 2.0 connector provided on the back of B0292, and connect the other end to the USB 2.0 host controller on the computer.

### How to use the program (Windows demo only)

The Menu bar at the top of the shown image contains few menu items and the current preview resolution and the frame rate are displayed on the bottom bar when the application is running. The following sections describe each of the menu items in detail.

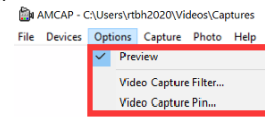
#### • Menu>Devices

This menu will show the available video devices to host PC. The B0292 named "USB Camera".



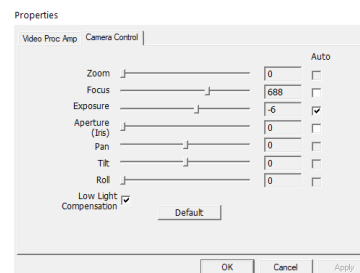
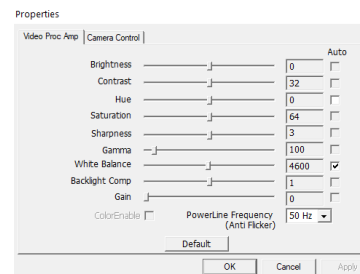
#### • Menu>Options

The options menu can be used to select the preview and image parameters supported by this camera.



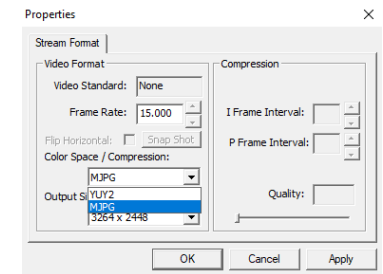
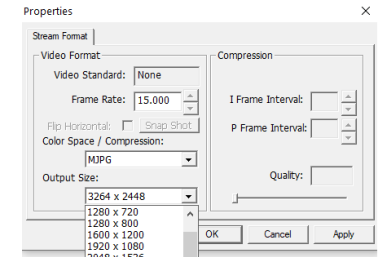
### How to use the program (Windows demo only)

- Video Capture Filter -> Video Proc Amp/Camera Control



### How to use the program (Windows demo only)

- Video Capture Pin



### How to use the program (Windows demo only)

#### • Menu> Capture

The capture menu is used to capture the still image and video by using this application. You can also select the related parameters.

