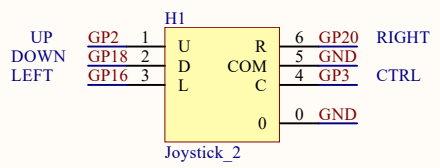
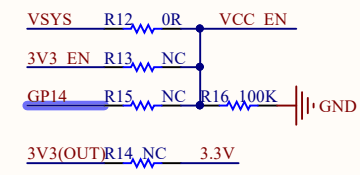
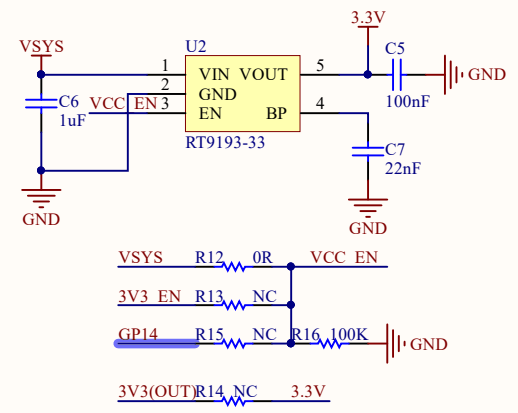
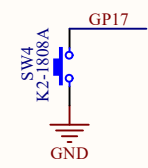
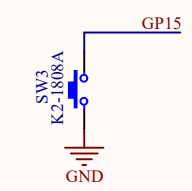
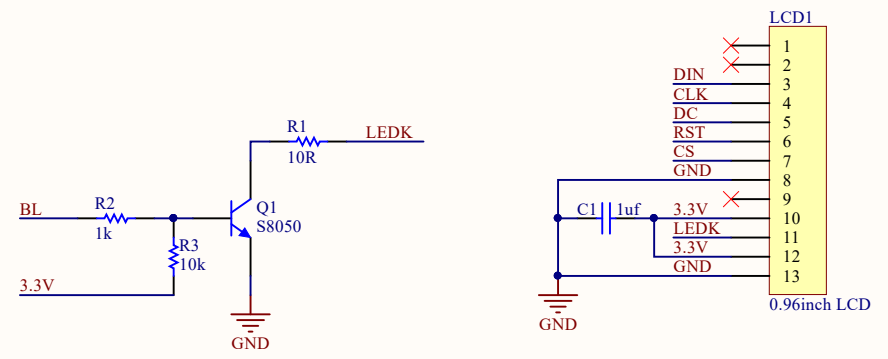


U1		USB		VBUS		VSYS	
GP0	1	GPIO0	39	VBUS	38	VSYS	37
GP1	2	GPIO1	38	VSYS	37	GND	36
GND	3	GND	37	GND	36	3V3 EN	35
GP2	4	GPIO2	36	3V3 EN	35	3V3(OUT)	34
GP3	5	GPIO3	35	3V3	34	ADC VREF	33
GP4	6	GPIO4	34	ADC VREF	33	GP28	32
GP5	7	GPIO5	33	GP28	32	GND	31
GND	8	GND	32	GND	31	GP27	30
GP6	9	GPIO6	31	GP27	30	GP26	29
GP7	10	GPIO7	30	GP26	29	RUN	28
GP8	11	GPIO8	29	RUN	28	GP22	27
GP9	12	GPIO9	28	GP22	27	GND	26
GND	13	GND	27	GND	26	GP21	25
GP10	14	GPIO10	26	GP21	25	GP19	24
GP11	15	GPIO11	25	GP19	24	GP18	23
GP12	16	GPIO12	24	GP18	23	GND	22
GP13	17	GPIO13	23	GND	22	GP17	21
GND	18	GND	22	GP17	21	GP16	20
GP14	19	GPIO14	21	GP16	20		
GP15	20	GPIO15	20				

Pi pico (40P)



GP11	DIN
GP10	CLK
GP8	DC
GP12	RST
GP9	CS
GP13	BL



W aveshare
Pico-LCD-0.96



A

GND

RST

CLK

CS

GND

UP

GP14

BL

DIN

GND

DC

CTRL

GND

1

(C1)

(C7)

(R15)

GP14

(R3)

(C5)

(R13)

EN

(Q1)

(U2)

(R16)

(R12)

VSYS

(R1)

(R2)

(C6)

(R14)

3V3



LEFT

GND

GND

EN

VSYS

B

DOWN

RIGHT

GND

3V3

GND

40