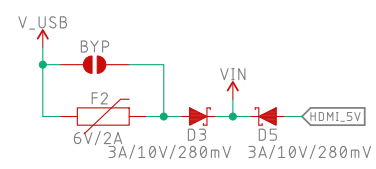
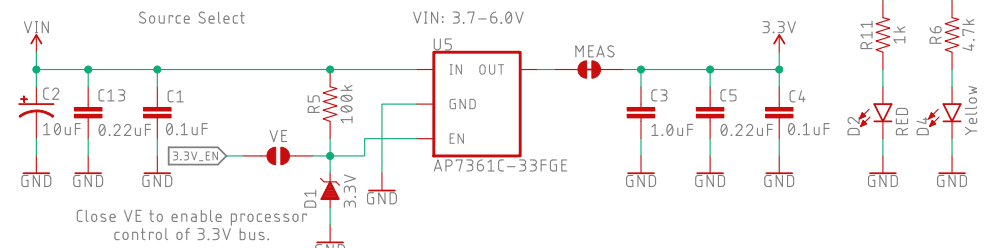


Closing jumper bypasses PTC to allow >2A current flows.

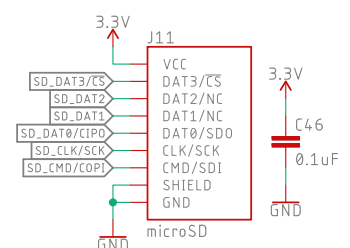


Voltage Regulation



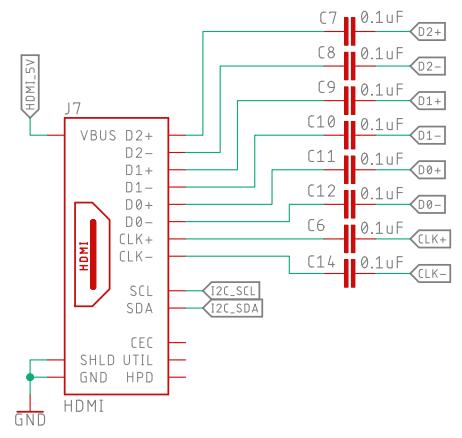
Close VE to enable processor control of 3.3V bus.

SDIO microSD

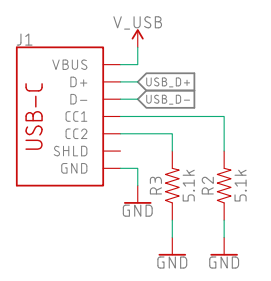


Can fall back to SPI as needed

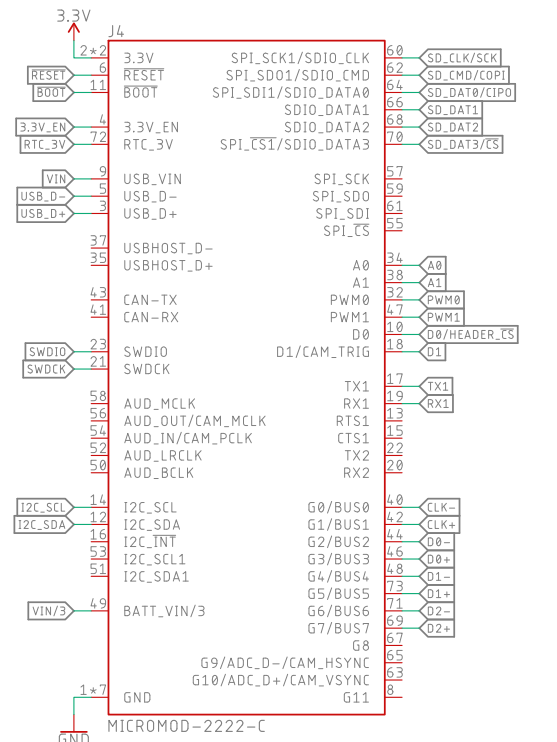
HDMI Connector



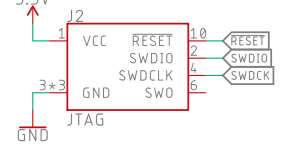
USB



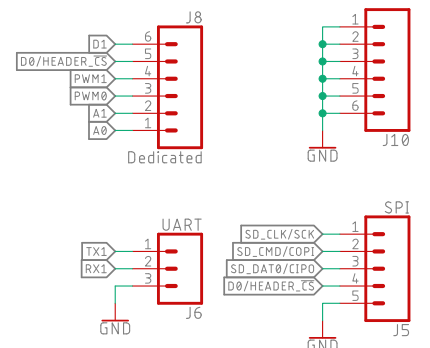
MicroMod Connector



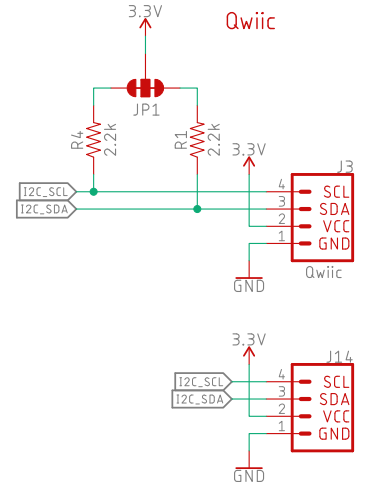
JTAG



GPIOs



Qwiic



Released under the Creative Commons Attribution Share-Alike 4.0 License <https://creativecommons.org/licenses/by-sa/4.0/>

TITLE: MicroMod-Big Display-Carrier

Design by: N. Seidle REV: x01

Date: 14/01/2021 15:53 Sheet: 1/1