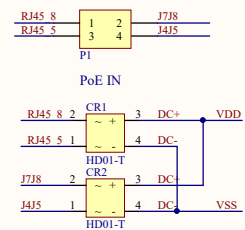


BCM/W/P1	P3	BCM/W/P1
1	3V3	1
3	SDA1	2
5	SCL1	3
7	GND	4
9	GND	5
11	GND	6
13	GND	7
15	GND	8
17	GND	9
19	GND	10
21	GND	11
23	GND	12
25	GND	13
27	GND	14
29	GND	15
31	GND	16
33	GND	17
35	GND	18
37	GND	19
39	GND	20
	GND	21
	GND	22
	GND	23
	GND	24
	GND	25
	GND	26
	GND	27
	GND	28
	GND	29
	GND	30
	GND	31
	GND	32
	GND	33
	GND	34
	GND	35
	GND	36
	GND	37
	GND	38
	GND	39
	GND	40

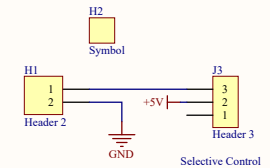
Raspberry Interface



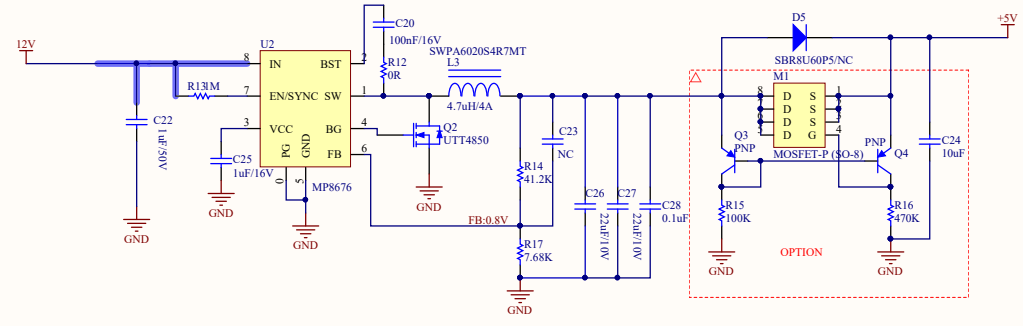
POE
Input Voltage 42V to 57V
Output Voltage 12V
Max Output Power 25W



USB-A Interface



FAN Interface



POWER