



totem

T-REX

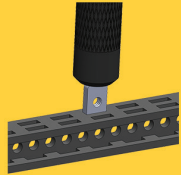
Assembly guide

**YOUNG
ENGINEER
KIT**



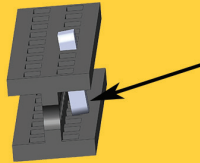
STARTING TIPS

Inserting nuts (1)



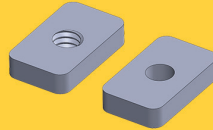
It is a good idea to start every step inserting nuts into beams (if the step requires). Use the back of the screwdriver to push in the nuts.

Inserting nuts (2)



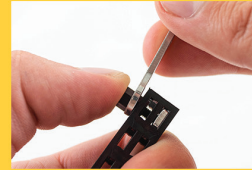
After entering the first slot, nuts tend to tilt. Use your thumb to push it back straight, and then again use the screwdriver to insert the nut all the way in.

Faulty threads



Some of the nuts are missing threads. This is a manufacturing issue and we are working on it. In the mean time, we add few extra nuts. We apologize for the inconvenience.

Tightening standoffs



Push Nylon Standoff with your thumb while tightening it with the wrench.

Ruler

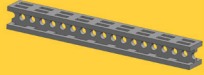


Use Beam/Bolt ruler to determine the length of beams and bolts.

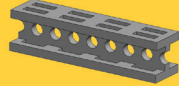
For more tips, please visit the link below:

<https://totemaker.net/blog/totem-mechanics-for-beginners/>

PART LIST



3x Beam 90 mm



18x Beam 40 mm



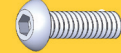
4x Board Triangular



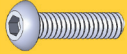
37x Bolt M3x6



1x Bolt M3x8



2x Bolt M3x10



4x Bolt M3x12



1x Bolt M3x16



1x Bolt M3x20



4x Bolt M3x25



4x 2-Hole 45 Simple Bracket



9x 2-Hole Simple Bracket



1x L-Twisted Bracket



1x L-Twisted Mirror Bracket



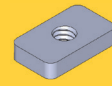
2x C-Bracket



2x 3-Hole 90 Bracket



3x Lock Nut M3



47x Nut M3 6x10



2x Nylon Spacer 4 mm



1x Nylon Spacer 8 mm



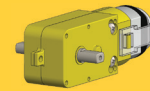
2x DC Motor Hub



2x DC Motor Bracket



1x Battery Case with Switch



1x DC Motor

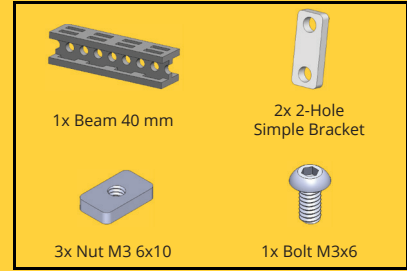
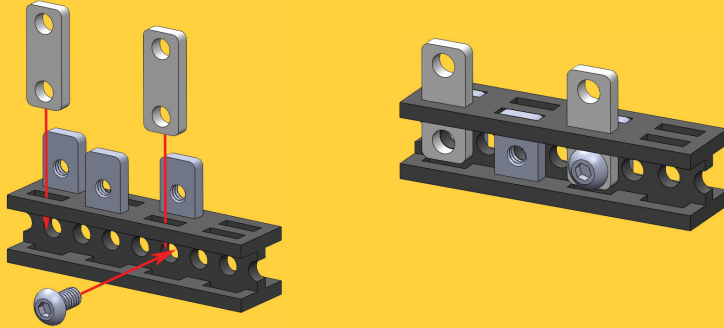


1x Totem Screwdriver

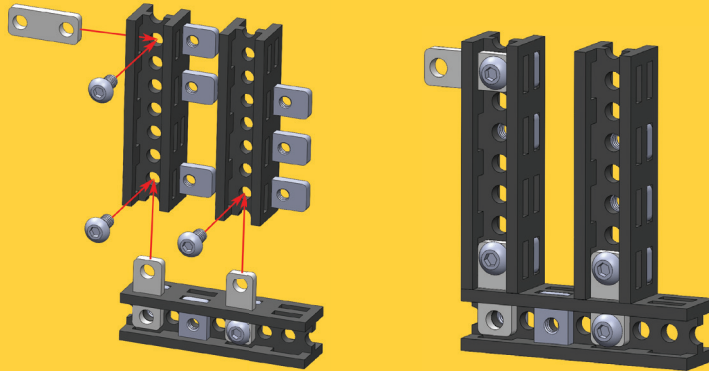


1x Totem Wrench

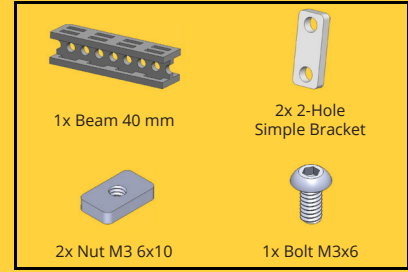
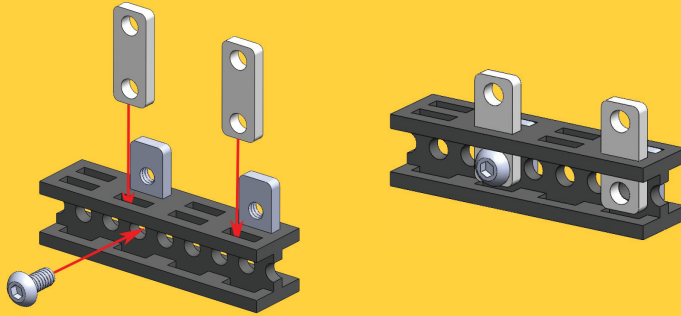
1



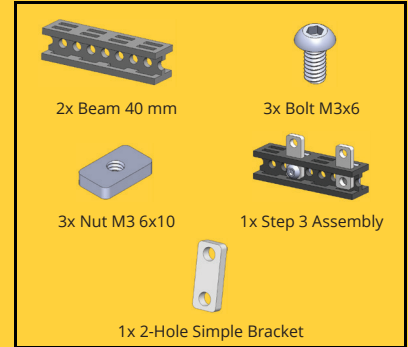
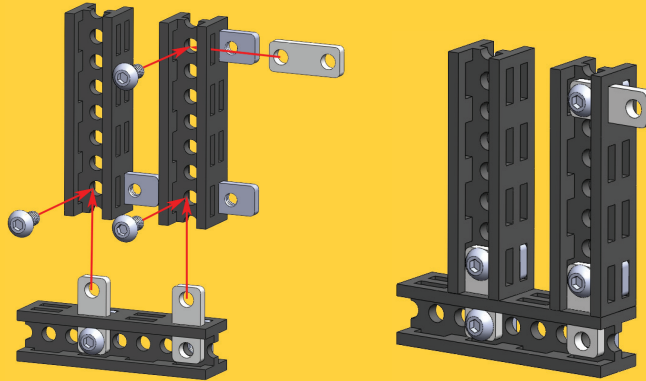
2



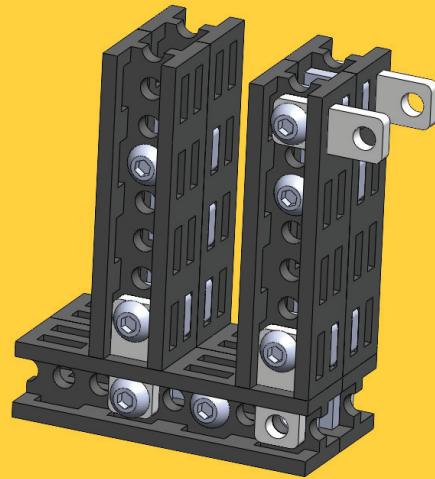
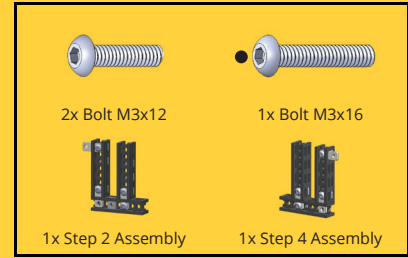
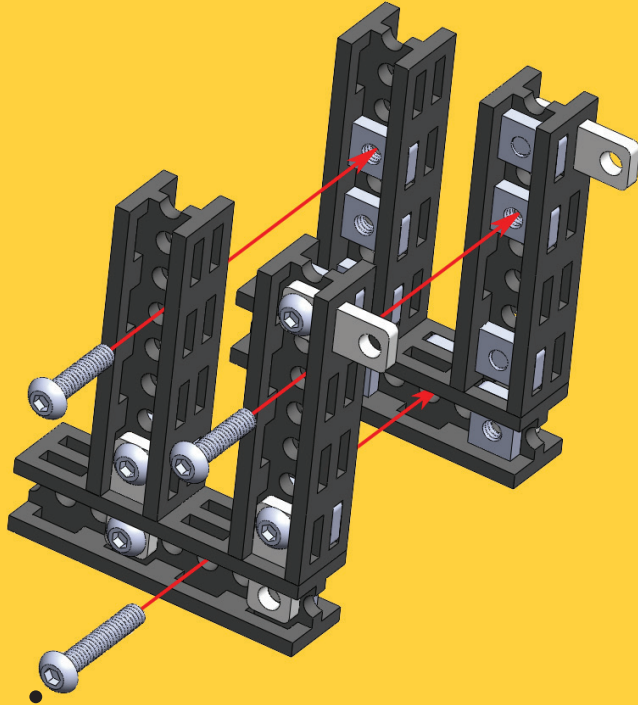
3



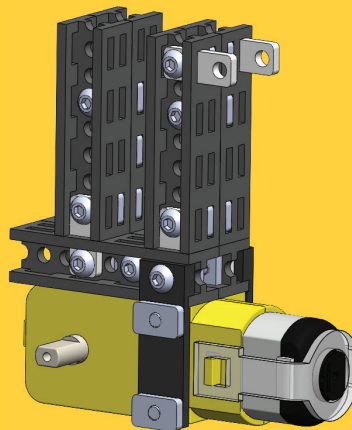
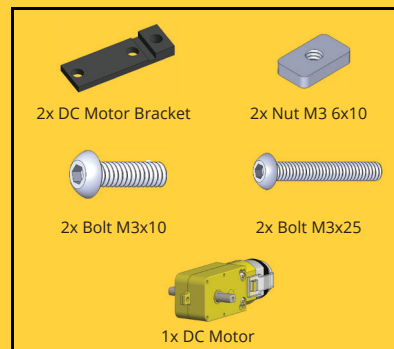
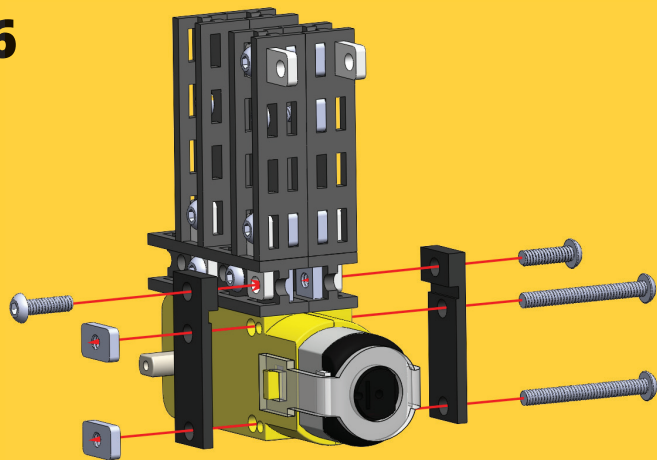
4



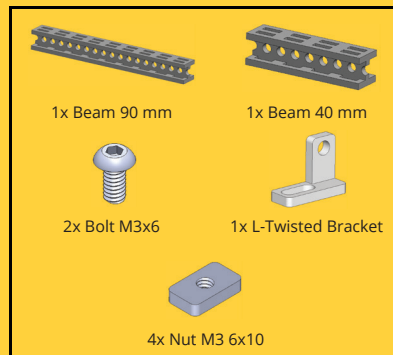
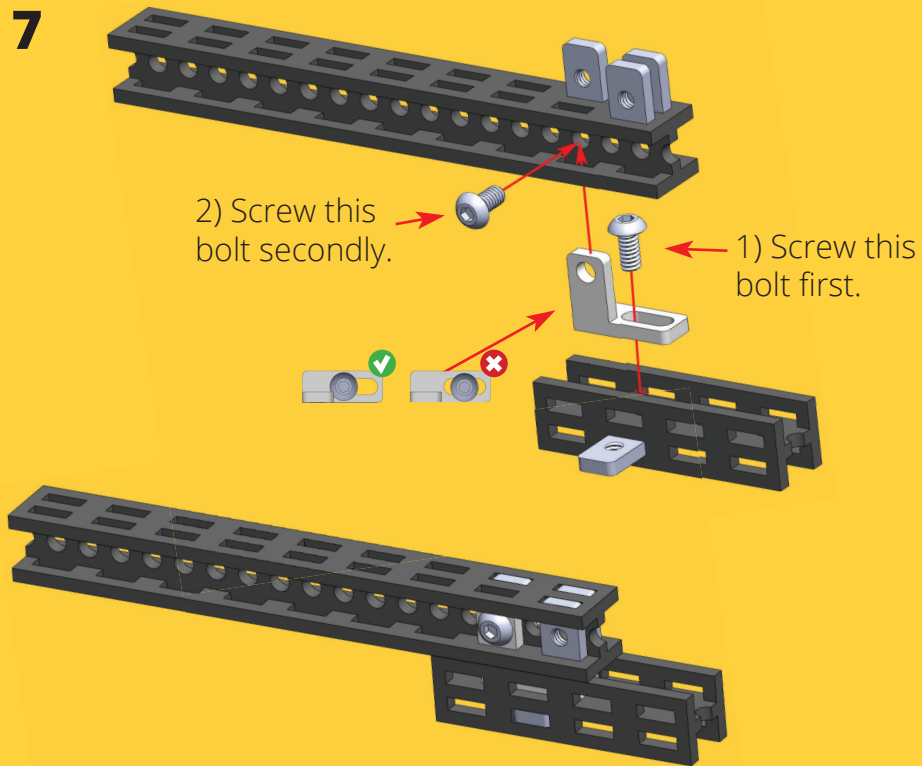
5



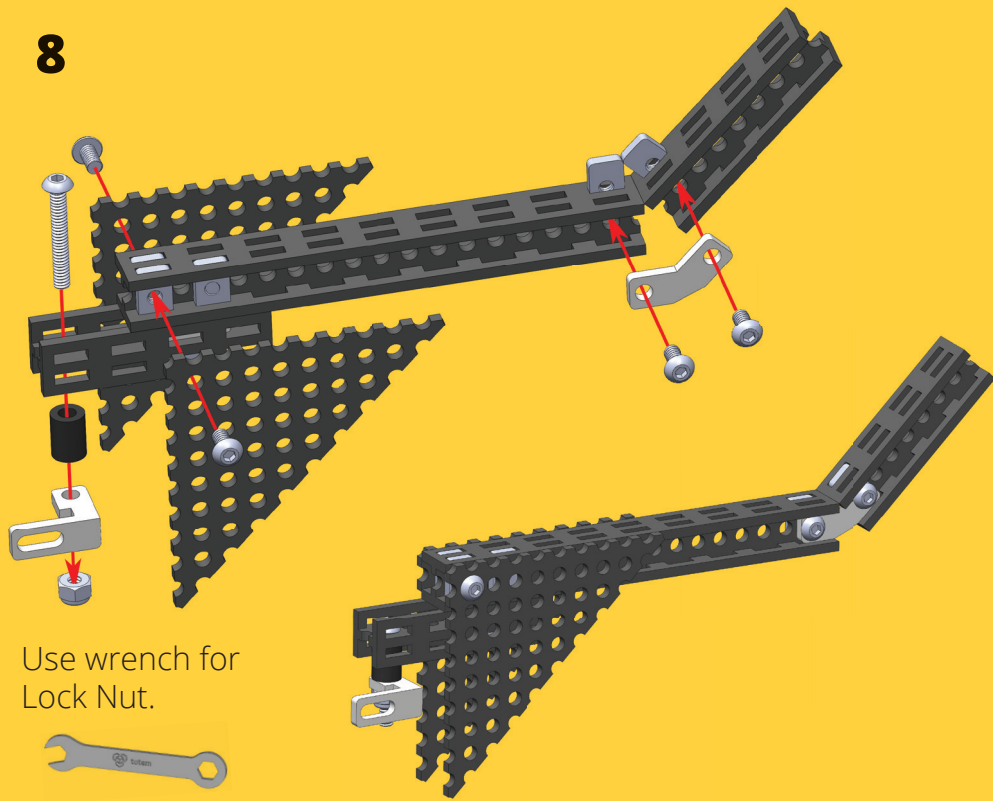
6



7



8



Use wrench for
Lock Nut.

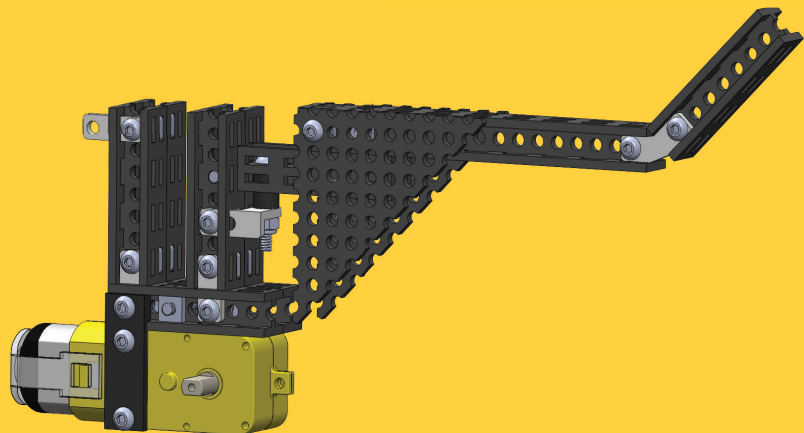
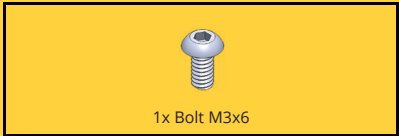
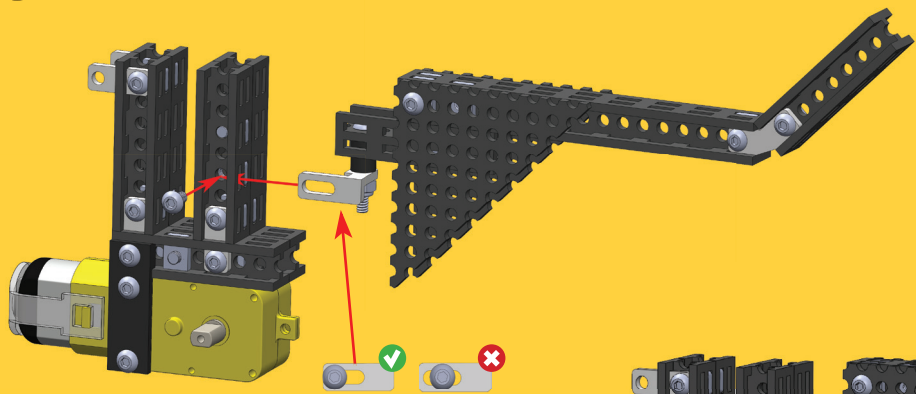


	
1x Beam 40 mm	2x Board Triangle
	
4x Bolt M3x6	1x Bolt M3x20
	
1x L-Twisted Mirror Bracket	1x 2-Hole 45 Simple Bracket
	
1x Nylon Spacer 8 mm	1x Lock Nut M3
	
2x Nut M3 6x10	1x Step 7 Assembly

Do not over tighten
the Lock Nut. Let
the tail move freely.

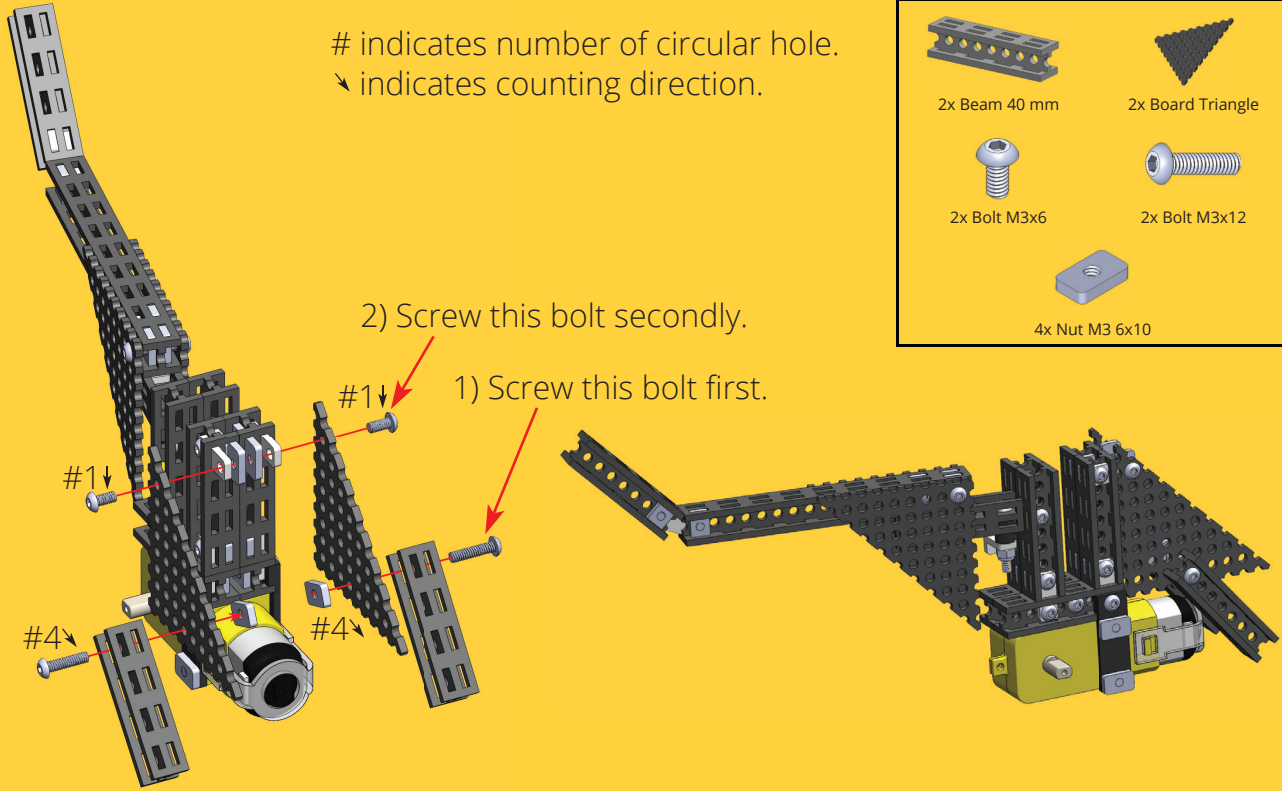
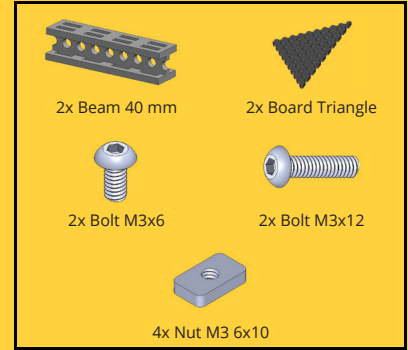


9

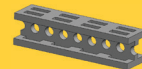
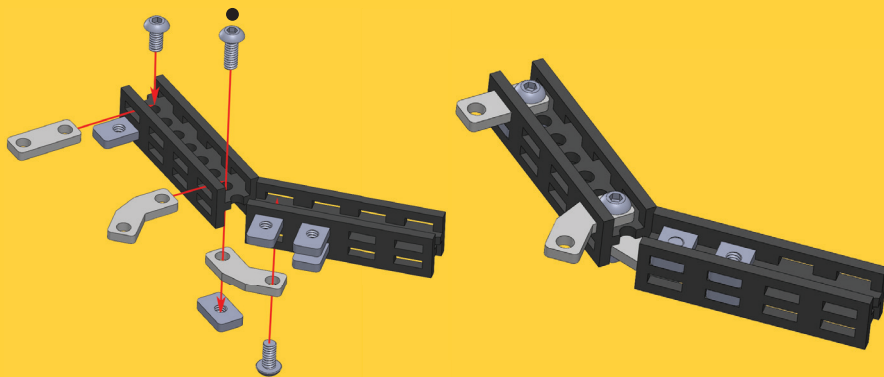


10

indicates number of circular hole.
↘ indicates counting direction.



11



2x Beam 40 mm



5x Nut M3 6x10



2x Bolt M3x6



1x Bolt M3x8

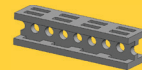
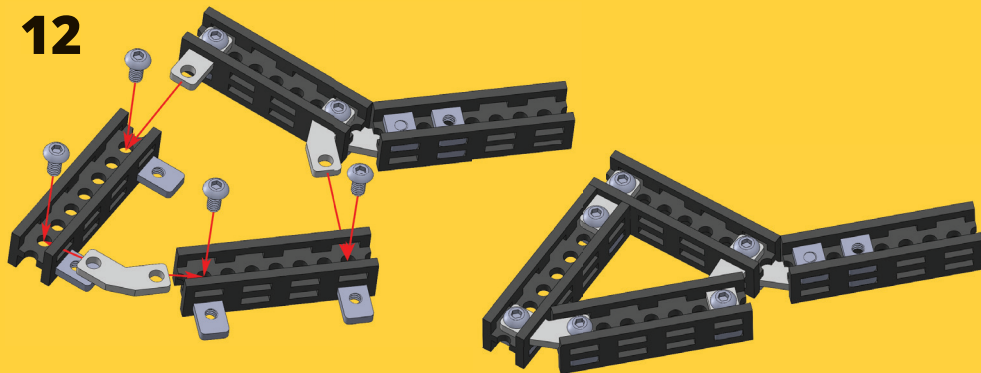


1x 2-Hole Simple Bracket



2x 2-Hole 45 Simple Bracket

12



2x Beam 40 mm



4x Nut M3 6x10

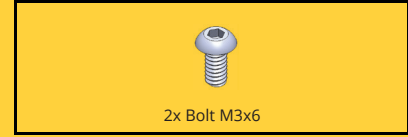
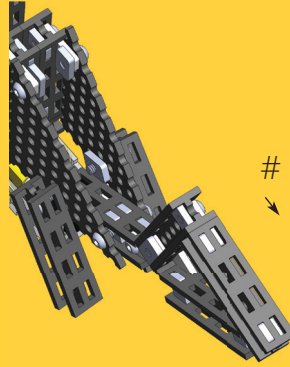
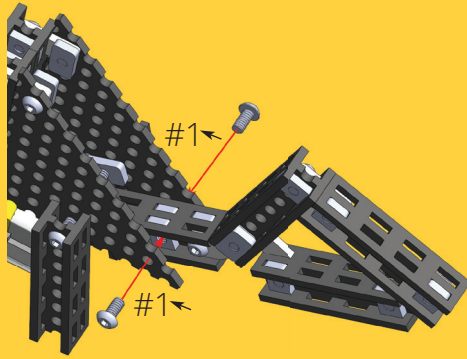


4x Bolt M3x6



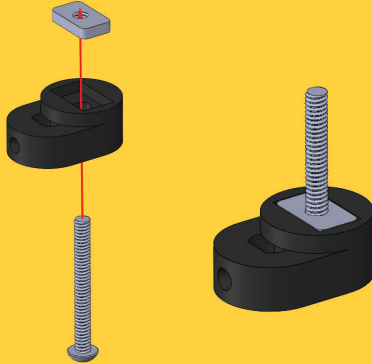
1x 2-Hole 45 Simple Bracket

13

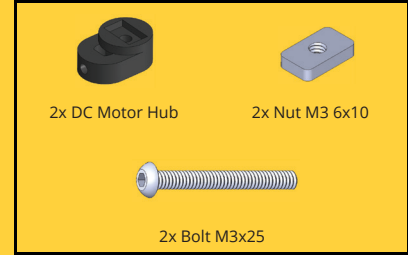


indicates number of circular hole.
 ↘ indicates counting direction.

14



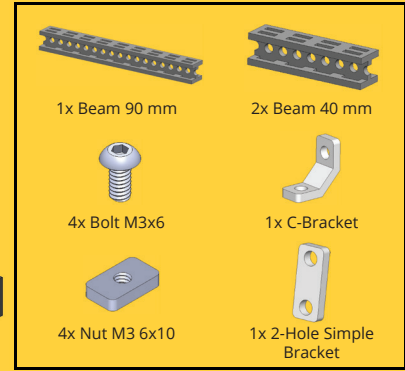
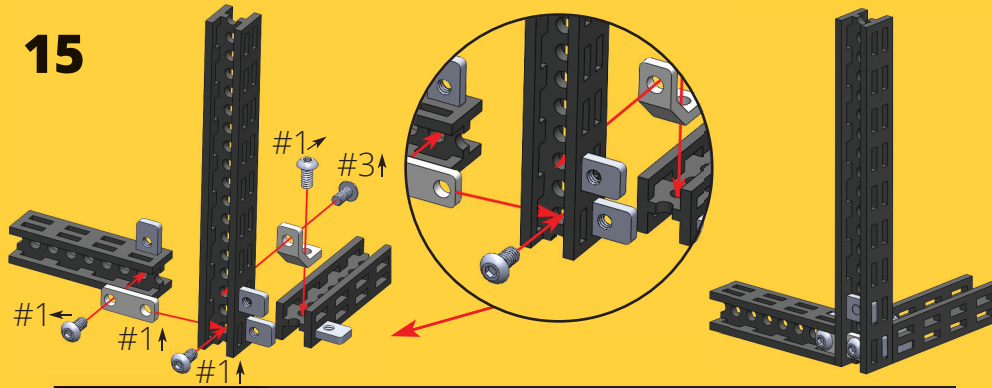
Tighten the bolt firmly.



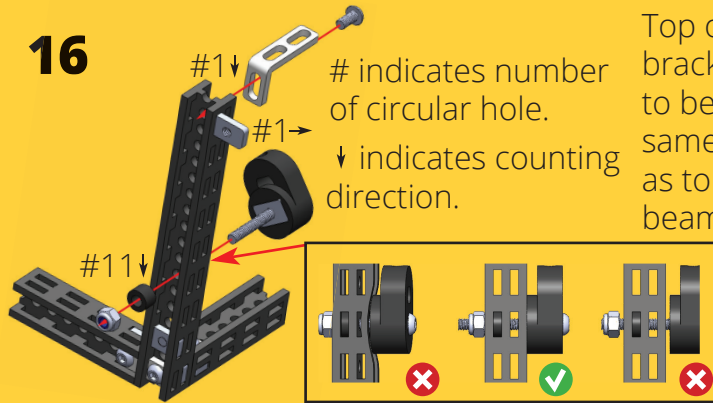
Repeat this step twice.

2x

15

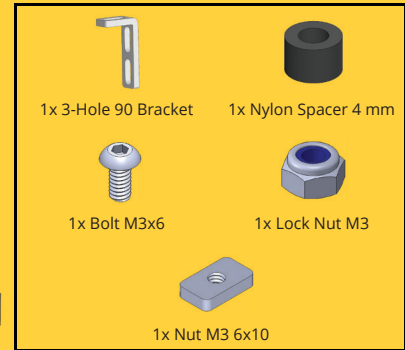


16

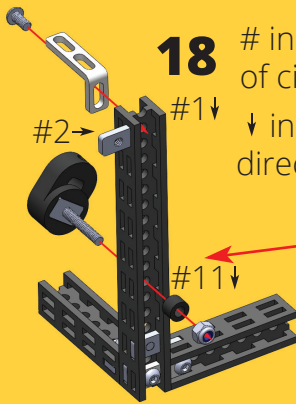
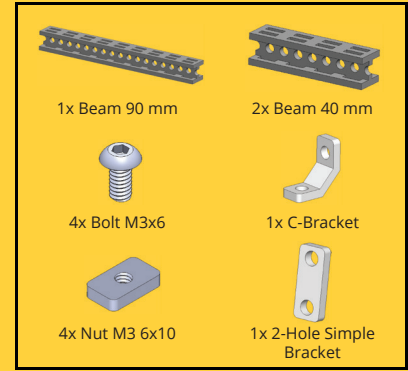
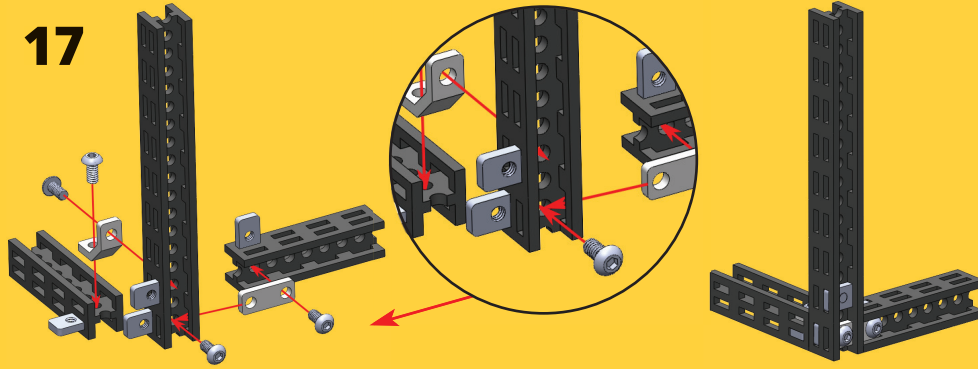


indicates number of circular hole.
 ↓ indicates counting direction.

Top of bracket has to be at the same level as the top of beam.



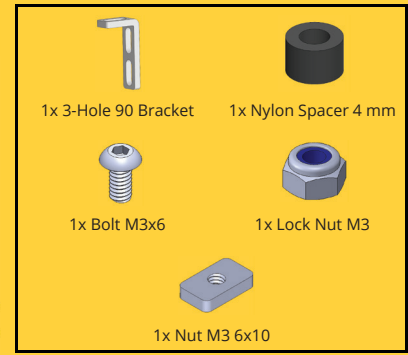
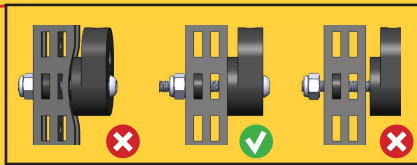
17



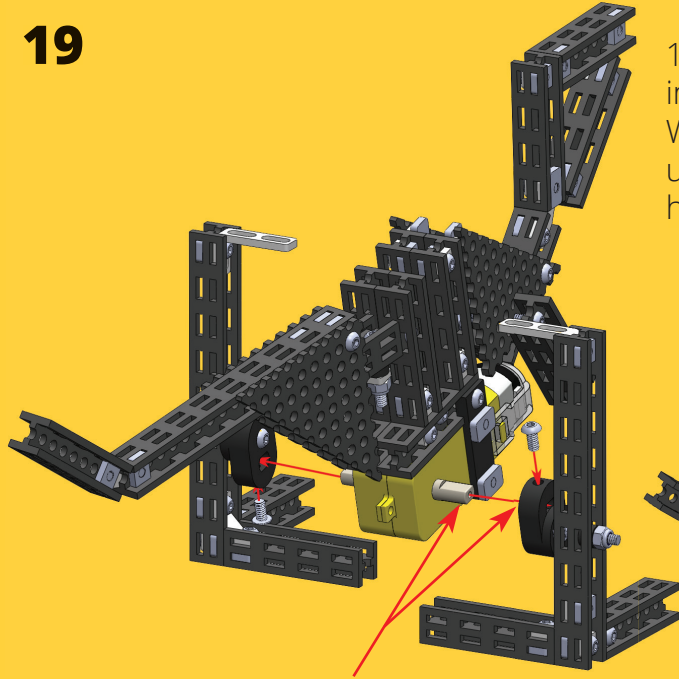
18

indicates number of circular hole.
 #1↓
 #2→
 ↓ indicates counting direction.

Top of bracket has to be at the same level as top of beam.

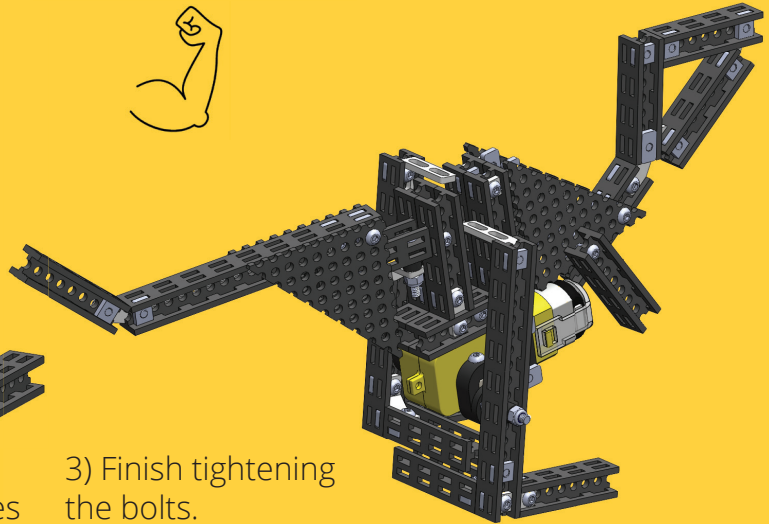
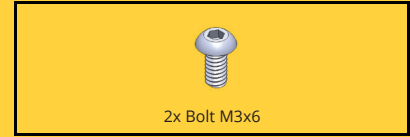


19



2) Mount hubs on motors' shafts. To do so, turn the hub accordingly so that its hole goes onto motor's shaft smoothly.

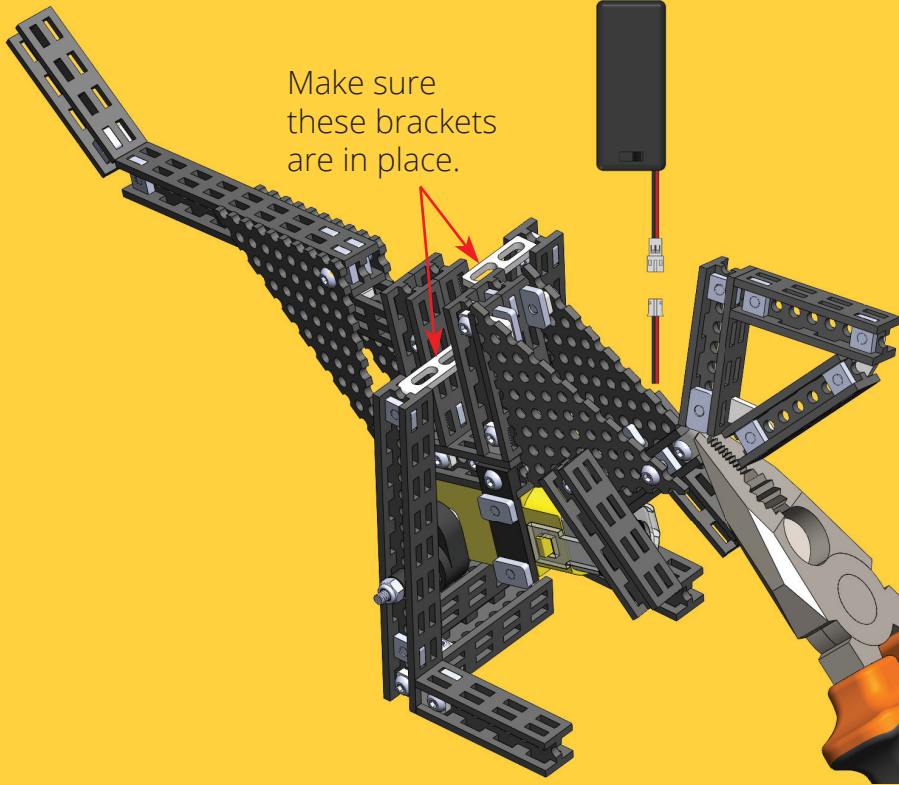
1) Screw bolts half way in DC Motor Hubs. When screwing bolts, use strength as the hubs holes are tight fit.



3) Finish tightening the bolts.

20

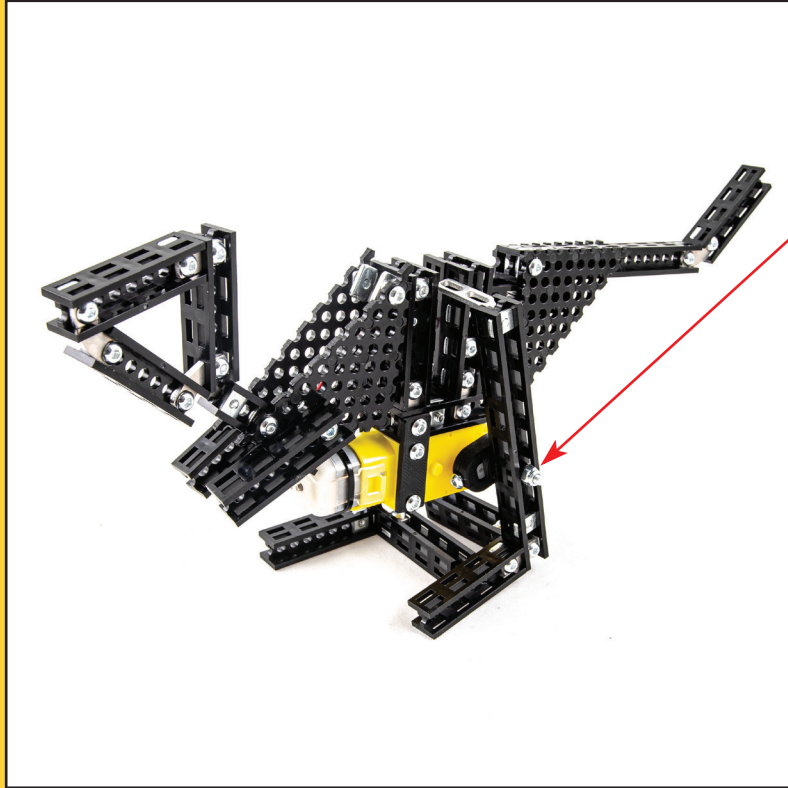
Make sure
these brackets
are in place.



1x Battery Case with Switch

Connect motor
with battery switch.

Optional step:
Bend the neck to
make the T-Rex
look more realistic.



Loosen Lock Nuts (if needed, on both sides) if motor cannot move legs.

Tighten Lock Nuts (if needed, on both sides) if legs are too wobbly.

Woohoo!

Your T-Rex is now alive and ready to play.





Do not give this product to children aged 3 or below. As with all electronic products, precautions should be observed during handling and use.

Adult supervision required.

Note to adults: to ensure that the child's play is both safe and fun, please review all operating instructions and safety rules with your child.

SAFETY WARNINGS:

- Do not pick up toy while in motion.
- Keep fingers, hair, and loose clothing away from moving parts, to avoid the injury.
- If the toy is dirty, please clean it with dry and soft cloth.
- Do not expose the vehicle to high temperature, high humidity, or direct sunlight.
- Indoor use only. Functions best on hard, flat surface.
- Do not put this product in water,
- Do not disassemble or modify the motor.

BATTERY INFORMATION:

- 2x 1.5V AA batteries required (not included).
- To insert batteries, use cross head screwdriver (not included).

TO AVOID BATTERY LEAKAGE:

- Do Always follow the instructions carefully. Use only batteries specified and be sure to insert them correctly by matching the + and - polarity markings.
- Do not mix old batteries and new batteries or standard (carbon-zinc) with alkaline batteries.
- Remove exhausted or dead batteries from the product.
- Remove batteries if product is not to be played with for a long time.
- Do not short-circuit the supply terminals.
- RECHARGEABLE batteries: Do not mix these with any other type of batteries. Always remove from the product before recharging. Recharge batteries under adult supervision. DO NOT RECHARGE OTHER TYPES OF BATERIES.
- Should this product cause, or be affected by local electrical interference, move it away from other electrical equipment.

KEEP THIS INTRUCTION MANUAL AND THE PRODUCT BOX AS IT CONTAIN IMPORTANT INFORMATION FOR FUTURE REFERENCE.

Due to the continuous product improvement, the pictures on this manual may differ slightly from the actual product. Please adhere to actual product instead.

Totem Maker names and logos are registered trademarks. All rights reserved.

www.totemmaker.net

Aldrea filalas Totem, UAB

Sauletekio al. 15-709, Vilnius, 10224, Lithuania

For customer support please contact: support@totemmaker.net

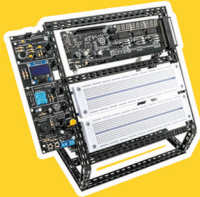


WARNING:

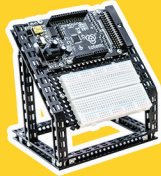
CHOKING HAZARD - Small parts.
Not for children under 3 years.



Discover more of Totem:



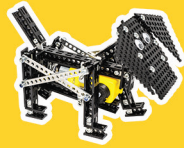
Mini Lab



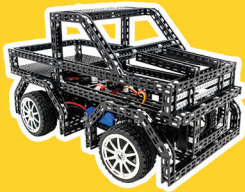
Micro Lab



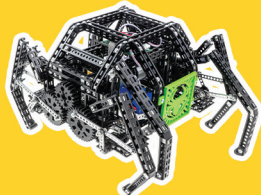
4 Wheel Drive



Young Engineer Kits



T.R.U.C.K. Car Kit



Spider

Find us here:

 @totemaker

 totem_maker

 totemmaker

 @totemaker

And tag us in your post
with **#totemaker**

www.totemaker.net