



totem

GIRAFFE

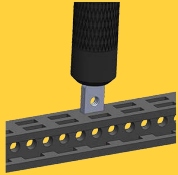
Assembly guide

**YOUNG
ENGINEER
KIT**



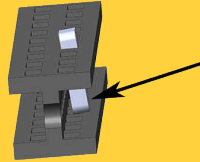
STARTING TIPS

Inserting nuts (1)



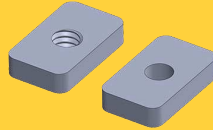
It is a good idea to start every step inserting nuts into beams (if the step requires). Use the back of the screwdriver to push in the nuts.

Inserting nuts (2)



After entering the first slot, nuts tend to tilt. Use your thumb to push it back straight, and then again use the screwdriver to insert the nut all the way in.

Faulty threads



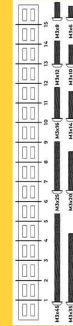
Some of the nuts are missing threads. This is a manufacturing issue and we are working on it. In the mean time, we add few extra nuts. We apologize for the inconvenience.

Tightening standoffs



Push Nylon Standoff with your thumb while tightening it with the wrench.

Ruler



Use Beam/Bolt ruler to determine the length of beams and bolts.

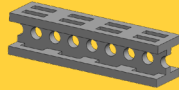
For more tips, please visit the link below:

<https://totemaker.net/blog/totem-mechanics-for-beginners/>

PART LIST



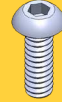
7x Beam 90 mm



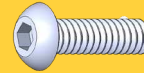
4x Beam 40 mm



10x Bolt M3x6



1x Bolt M3x8



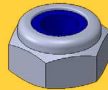
8x Bolt M3x10



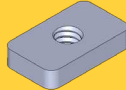
6x Bolt M3x25



2x Bolt M3x35



4x Lock Nut M3



25x Nut M3 6x10



2x 2-Hole 45 Bracket



1x 2-Hole 45 Simple Bracket



2x 2-Hole Simple Bracket



2x C-Bracket



4x Strip Bracket 75 mm



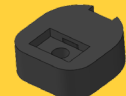
6x Nylon Spacer 4 mm



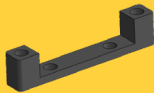
2x Nylon Spacer 8 mm



4x Nylon Standoff M3x8



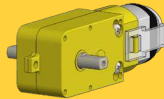
2x DC Motor Hub



2x DC Motor Bracket



1x Battery Case with Switch



1x DC Motor

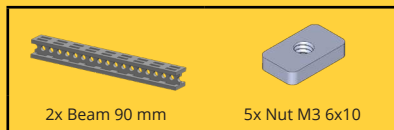
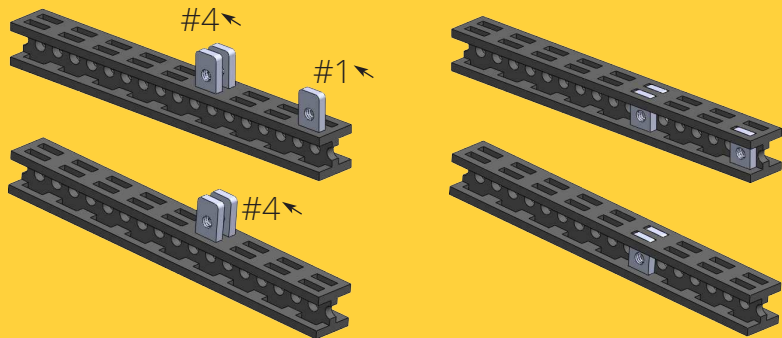


1x Totem Screwdriver



1x Totem Wrench

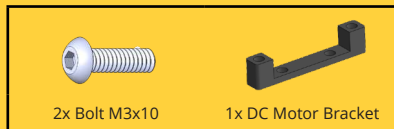
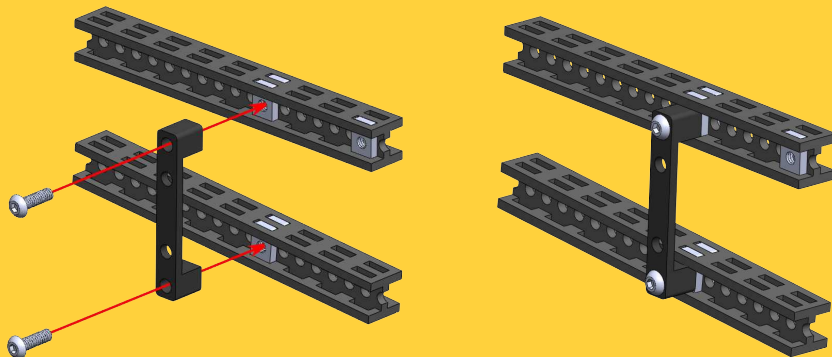
1



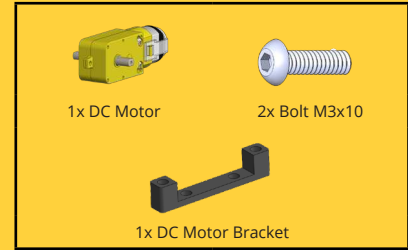
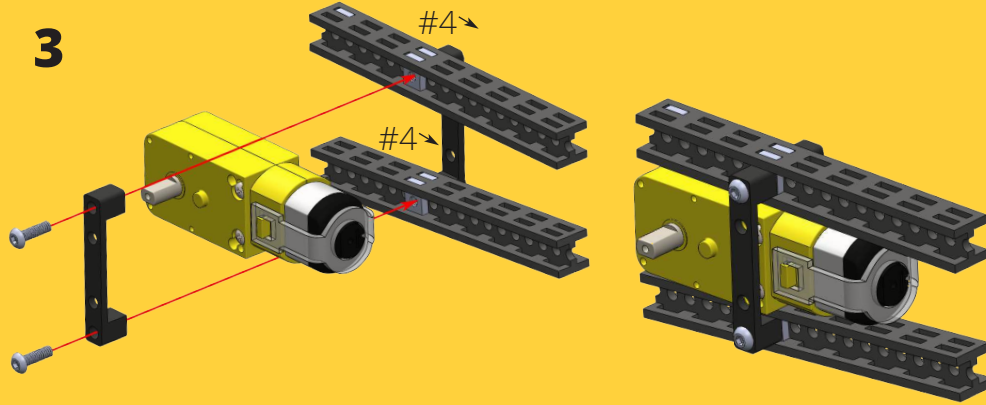
indicates number of circular hole.

↓ indicates counting direction.

2



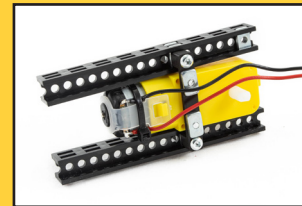
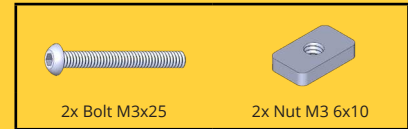
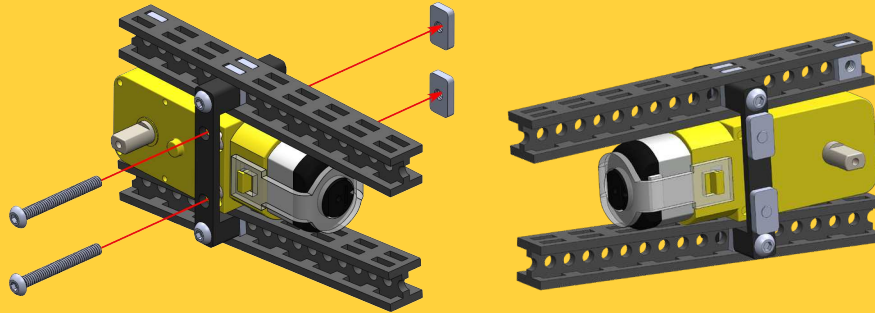
3



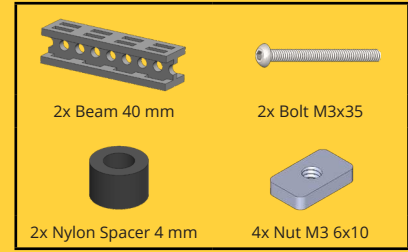
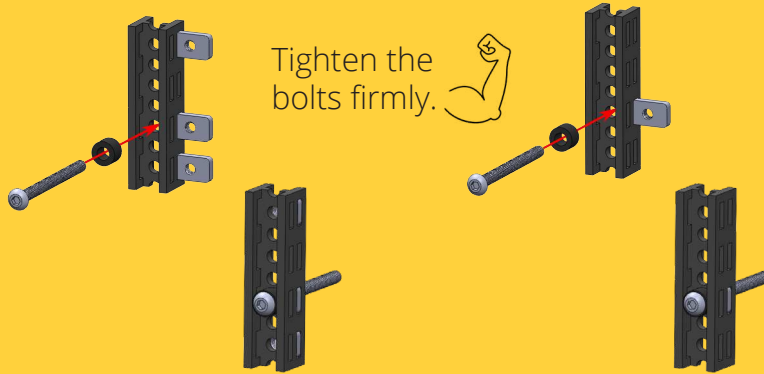
indicates number of circular hole.

↓ indicates counting direction.

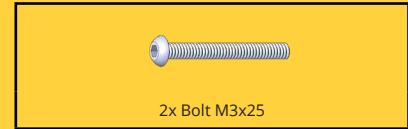
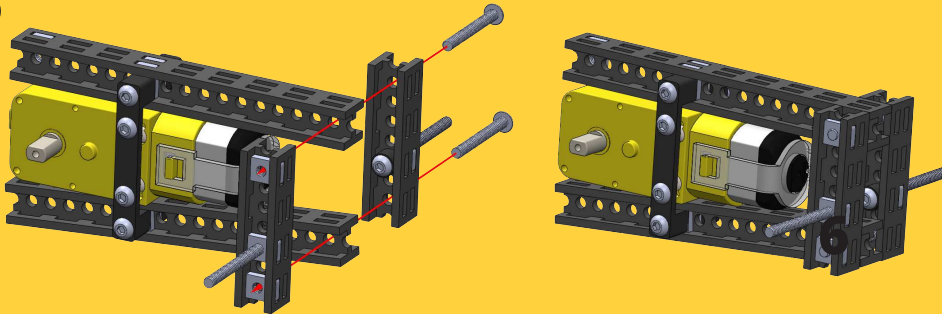
4



5

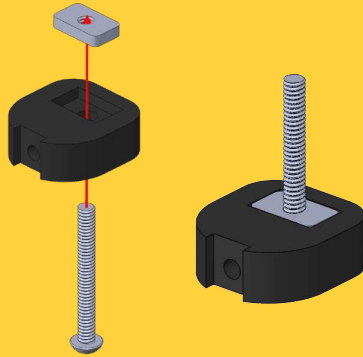


6

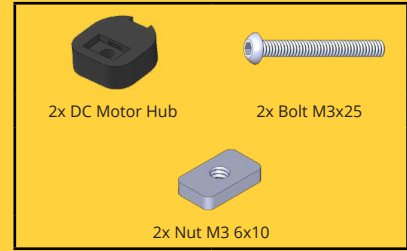


7

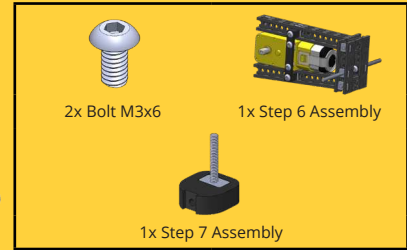
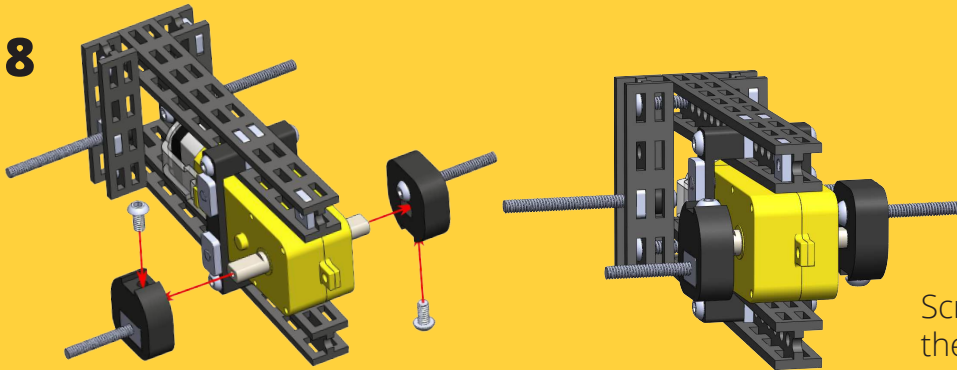
Tighten the bolt firmly.



Repeat this step twice.
2x



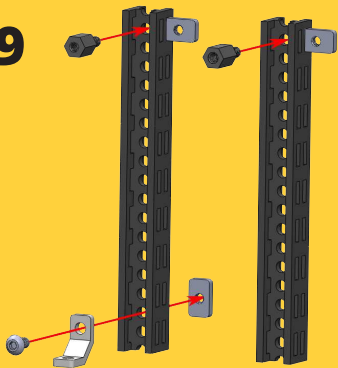
8



Screw bolt with strength as the hub's hole is tight fit.



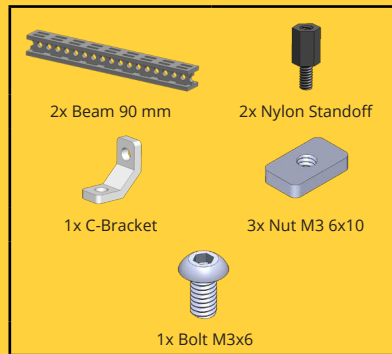
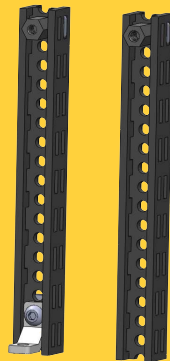
9



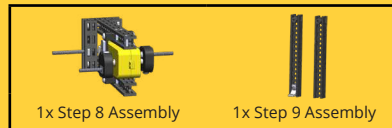
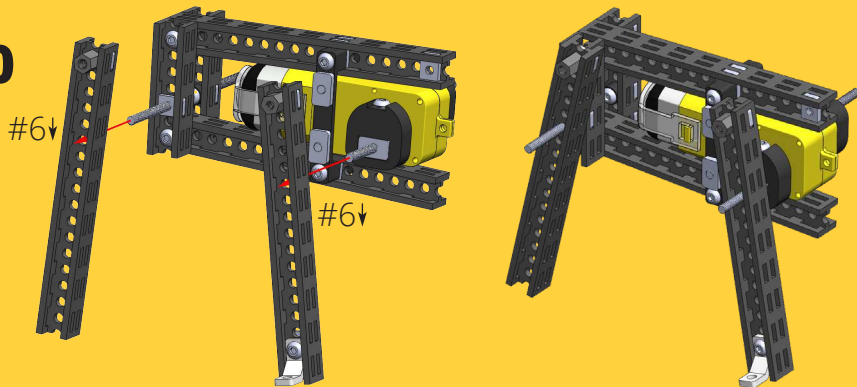
Do not use much force when tightening Nylon Standoffs.



Use wrench for Nylon Standoffs.



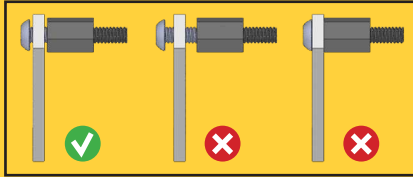
10



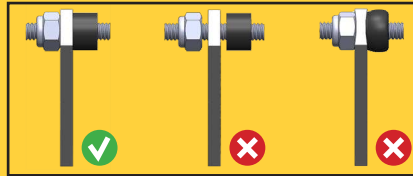
indicates number of circular hole.

↓ indicates counting direction.

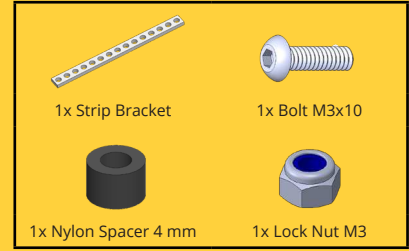
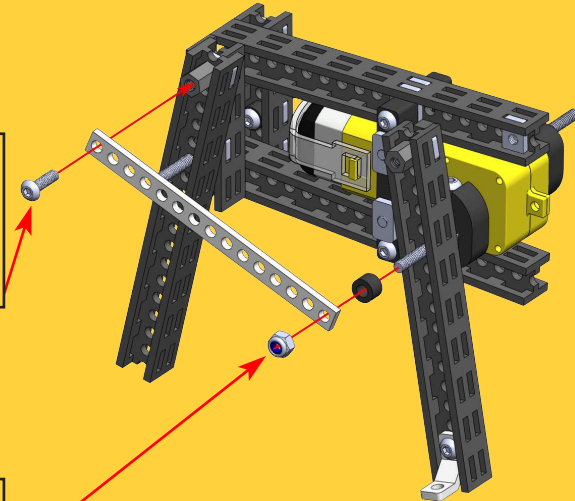
11



Do not use much force when tightening Bolt into Standoff.



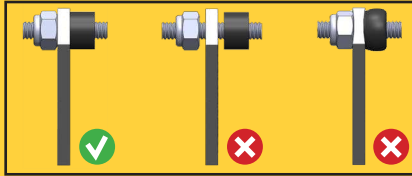
Do not over-tighten Strip Bracket. Bracket must be slightly loose.



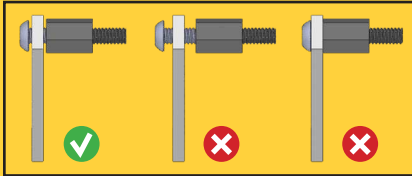
Use wrench for Lock Nut.




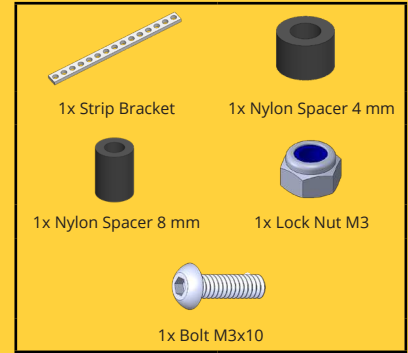
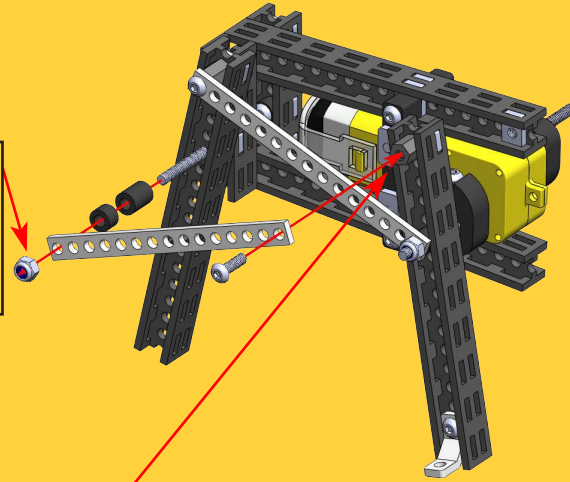
12



Do not over-tighten Strip Bracket. Bracket must be slightly loose. 



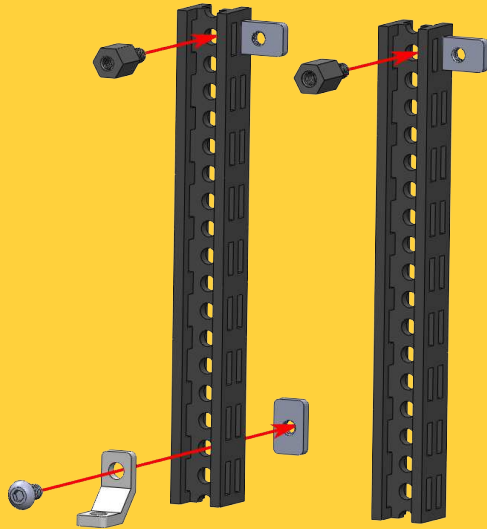
Do not use much force when tightening Bolt into Standoff. 



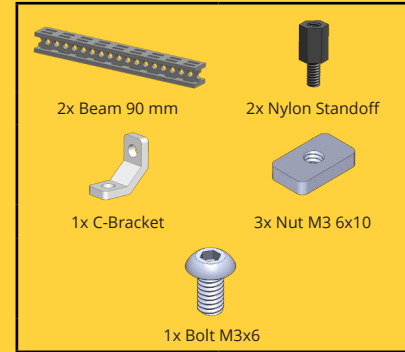
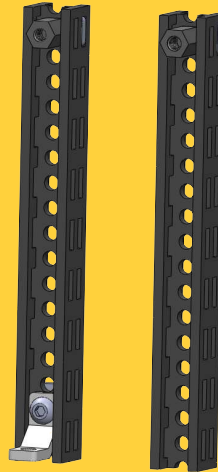
Use wrench for Lock Nut.



13



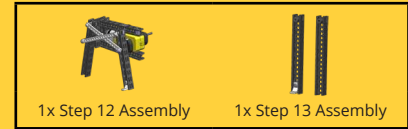
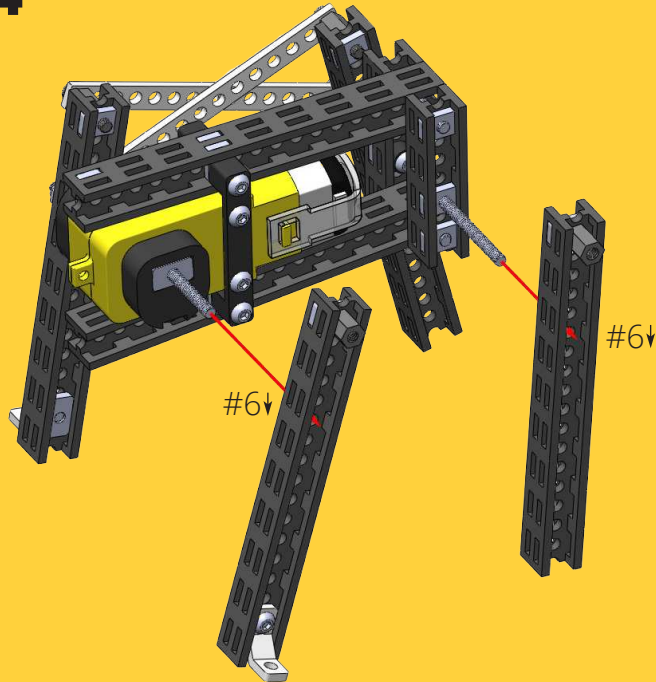
Do not use much force when tightening Nylon Standoffs.



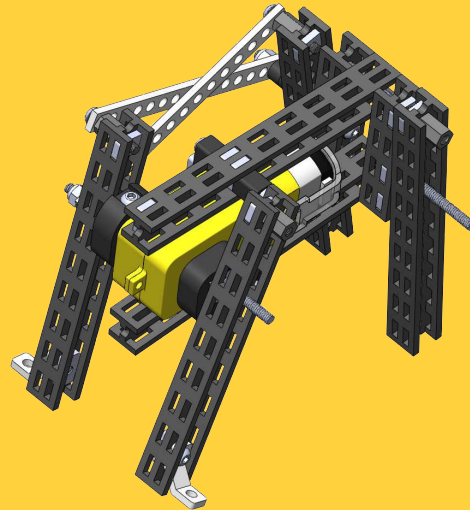
Use wrench for Nylon Standoffs.



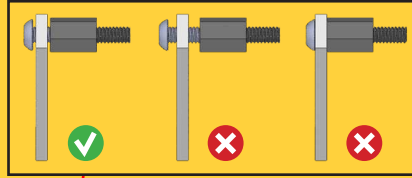
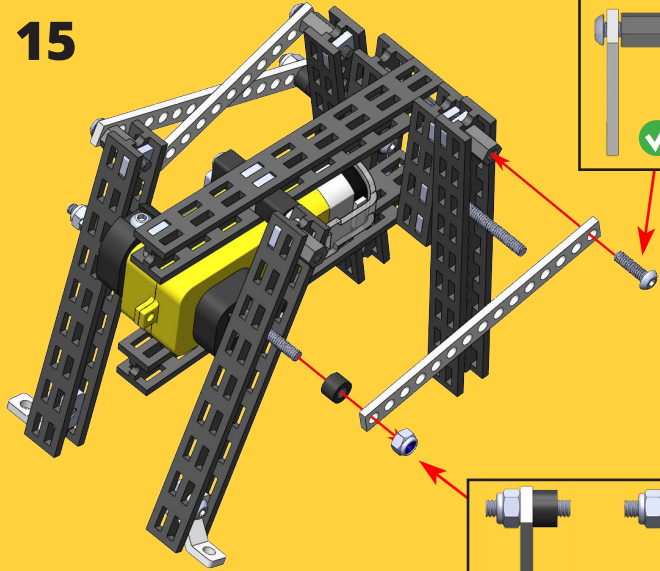
14



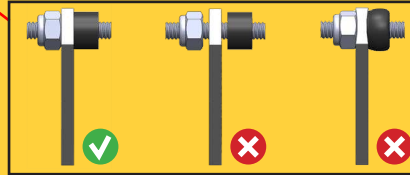
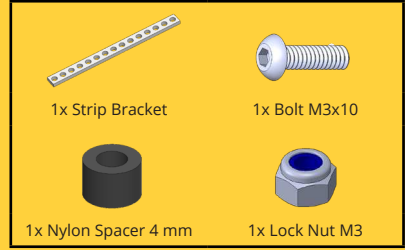
indicates number of circular hole.
↓ indicates counting direction.



15



Do not use much force when tightening Bolt into Standoff.



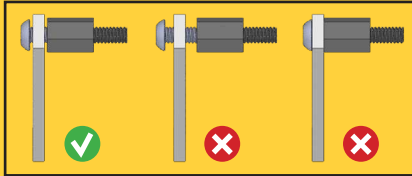
Do not over-tighten Strip Bracket. Bracket must be slightly loose.



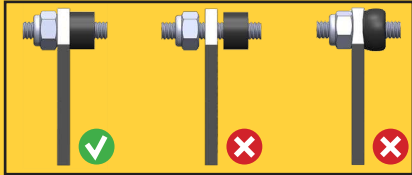
Use wrench for Lock Nut.



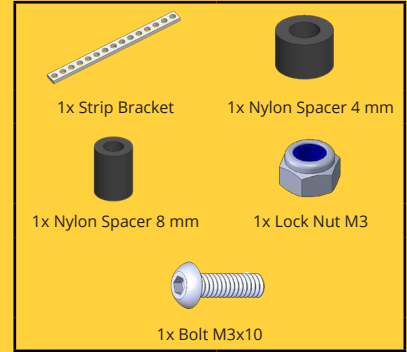
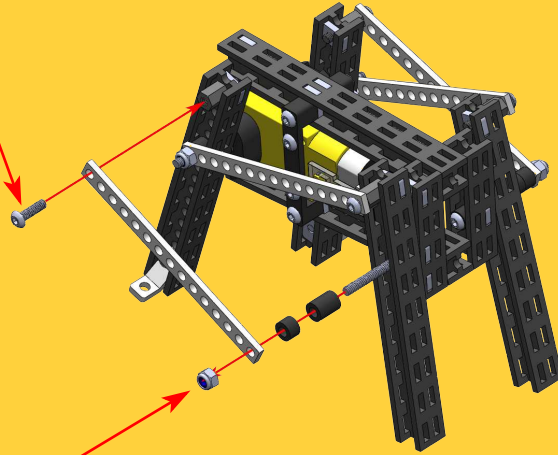
16



Do not use much force when tightening Bolt into Standoff.



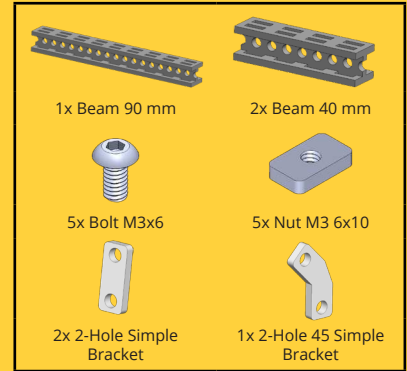
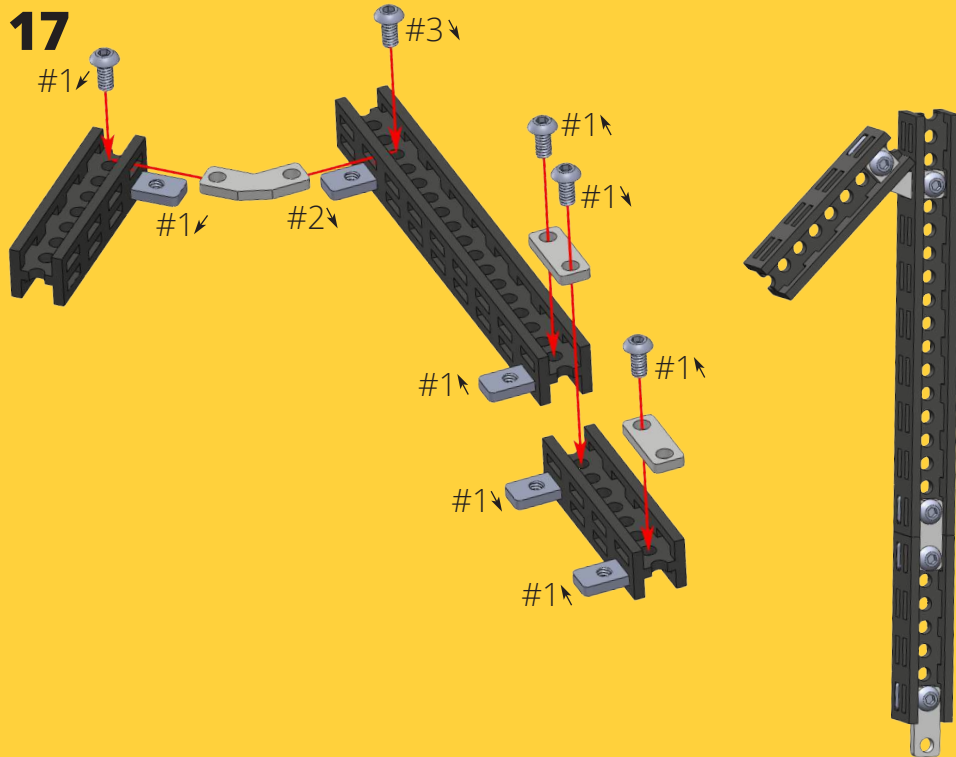
Do not over-tighten Strip Bracket. Bracket must be slightly loose.



Use wrench for Lock Nut.



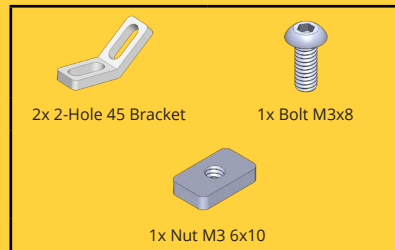
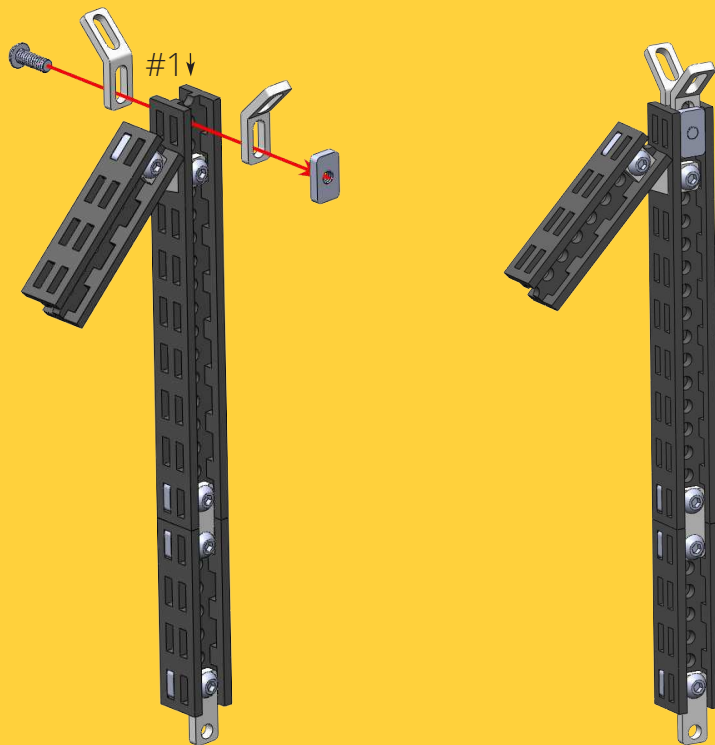
17



indicates number of circular hole.

↓ indicates counting direction.

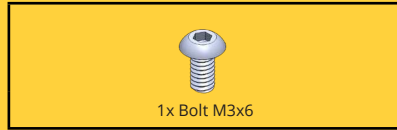
18



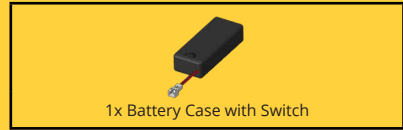
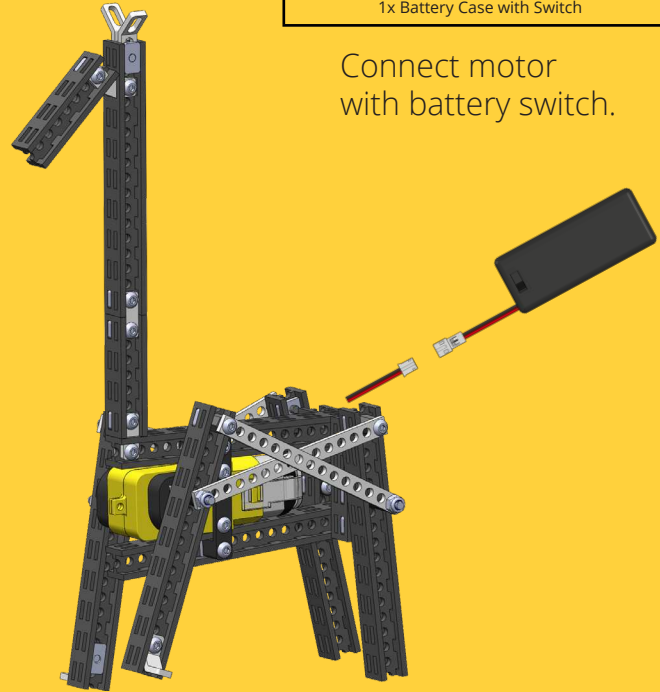
indicates number of circular hole.

↓ indicates counting direction.

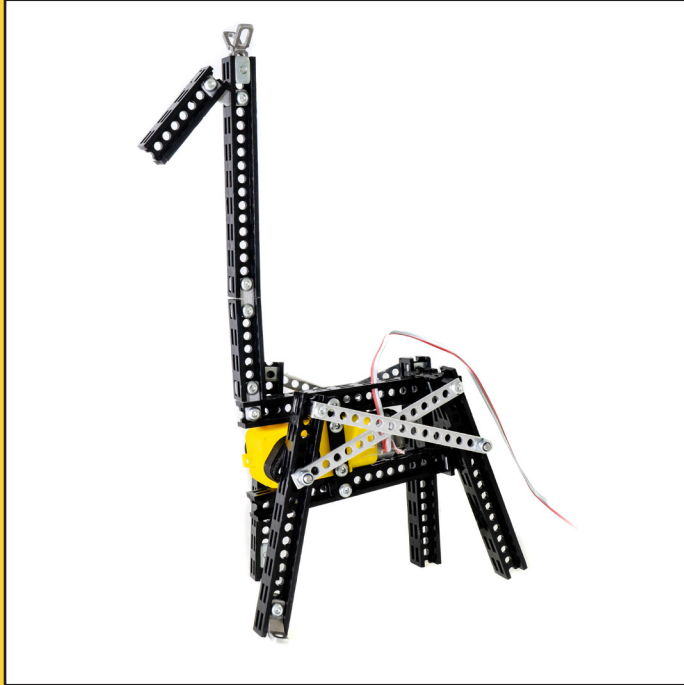
19



20



Connect motor
with battery switch.



Loosen Lock Nuts (if needed, on both sides) if motor cannot move legs.

Tighten Lock Nuts (if needed, on both sides) if legs are too wobbly.

Woohoo!

Your Giraffe is now alive and ready to play.





Do not give this product to children aged 3 or below. As with all electronic products, precautions should be observed during handling and use.

Adult supervision required.

Note to adults: to ensure that the child's play is both safe and fun, please review all operating instructions and safety rules with your child.

SAFETY WARNINGS:

- Do not pick up toy while in motion.
- Keep fingers, hair, and loose clothing away from moving parts, to avoid the injury.
- If the toy is dirty, please clean it with dry and soft cloth.
- Do not expose the vehicle to high temperature, high humidity, or direct sunlight.
- Indoor use only. Functions best on hard, flat surface.
- Do not put this product in water,
- Do not disassemble or modify the motor.

TO AVOID BATTERY LEAKAGE:

- Do Always follow the instructions carefully. Use only batteries specified and be sure to insert them correctly by matching the + and - polarity markings.
- Do not mix old batteries and new batteries or standard (carbon-zinc) with alkaline batteries.
- Remove exhausted or dead batteries from the product.
- Remove batteries if product is not to be played with for a long time.
- Do not short-circuit the supply terminals.
- RECHARGEABLE batteries: Do not mix these with any other type of batteries. Always remove from the product before recharging. Recharge batteries under adult supervision. DO NOT RECHARGE OTHER TYPES OF BATERIES.
- Should this product cause, or be affected by local electrical interference, move it away from other electrical equipment.

KEEP THIS INTRUCTION MANUAL AND THE PRODUCT BOX AS IT CONTAIN IMPORTANT INFORMATION FOR FUTURE REFERENCE.

Due to the continuous product improvement, the pictures on this manual may differ slightly from the actual product. Please adhere to actual product instead.

Totem Maker names and logos are registered trademarks. All rights reserved.

www.totemmaker.net

Aldrea filalas Totem, UAB

Sauletekio al. 15-709, Vilnius, 10224, Lithuania

For customer support please contact: support@totemmaker.net

BATTERY INFORMATION:

- 2x 1.5V AA batteries required (not included).
- To insert batteries, use cross head screwdriver (not included).

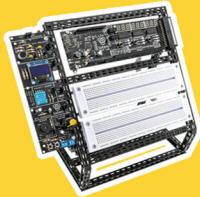


WARNING:

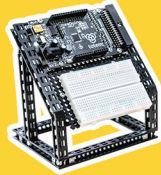
CHOKING HAZARD - Small parts.
Not for children under 3 years.



Discover more of Totem:



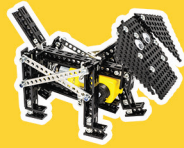
Mini Lab



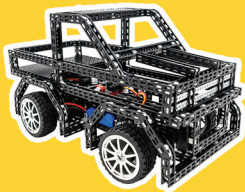
Micro Lab



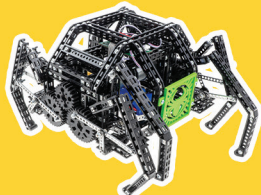
4 Wheel Drive



Young Engineer Kits



T.R.U.C.K. Car Kit



Spider

Find us here:

 @totemaker

 totem_maker

 totemmaker

 @totemaker

And tag us in your post
with **#totemaker**

www.totemaker.net