



totem

DOG

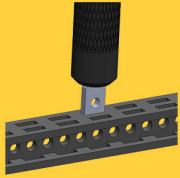
Assembly guide

YOUNG ENGINEER KIT



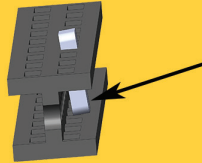
STARTING TIPS

Inserting nuts (1)



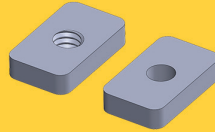
It is a good idea to start every step inserting nuts into beams (if the step requires). Use the back of the screwdriver to push in the nuts.

Inserting nuts (2)



After entering the first slot, nuts tend to tilt. Use your thumb to push it back straight, and then again use the screwdriver to insert the nut all the way in.

Faulty threads



Some of the nuts are missing threads. This is a manufacturing issue and we are working on it. In the mean time, we add few extra nuts. We apologize for the inconvenience.

Tightening standoffs



Push Nylon Standoff with your thumb while tightening it with the wrench.

Ruler

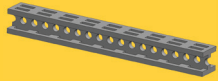


Use Beam/Bolt ruler to determine the length of beams and bolts.

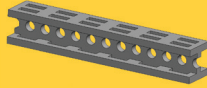
For more tips, please visit the link below:

<https://totemaker.net/blog/totem-mechanics-for-beginners/>

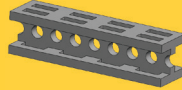
PART LIST



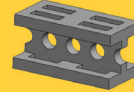
2x Beam 90 mm



4x Beam 60 mm



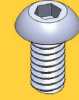
5x Beam 40 mm



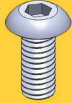
4x Beam 20 mm



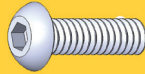
6x Board Triangular



21x Bolt M3x6



2x Bolt M3x8



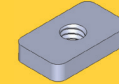
8x Bolt M3x10



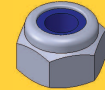
6x Bolt M3x25



2x Bolt M3x35



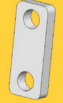
35x Nut M3 6x10



6x Lock Nut M3



2x 2-Hole 45 Simple Bracket



5x 2-Hole Simple Bracket



1x 2-Hole 90 Bracket



4x Strip Bracket 75 mm



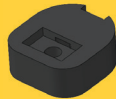
6x Nylon Spacer 4 mm



2x Nylon spacer 8 mm



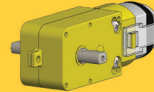
4x Nylon Standoff M3x8



2x DC Motor Hub



2x DC Motor Bracket



1x DC Motor



1x Battery Case with Switch



2x Dog Eye

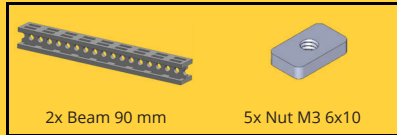
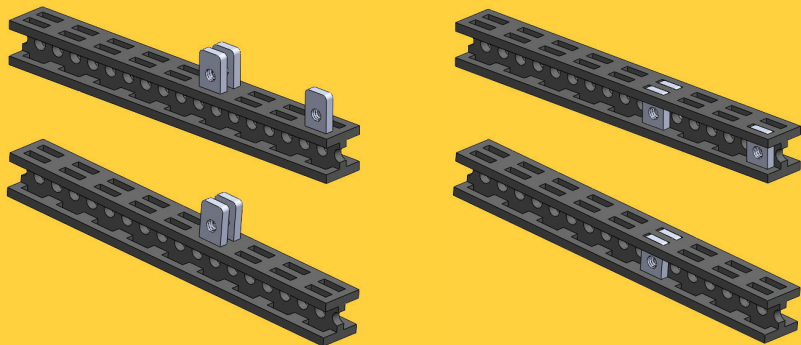


1x Totem Screwdriver

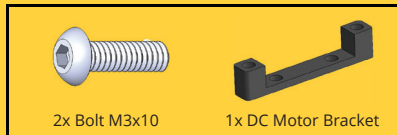
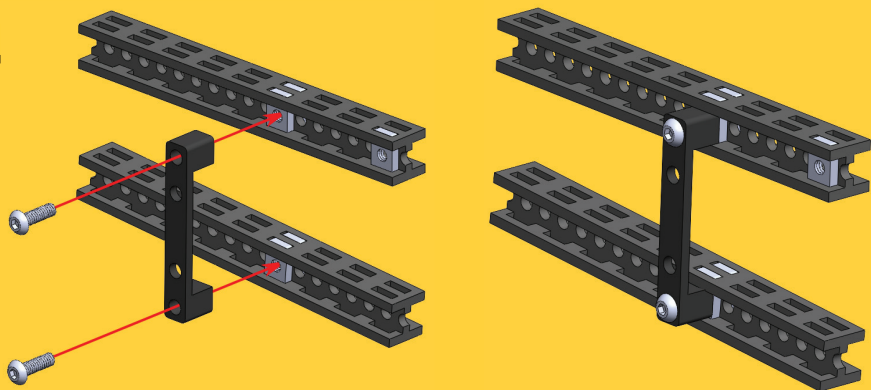


1x Totem Wrench

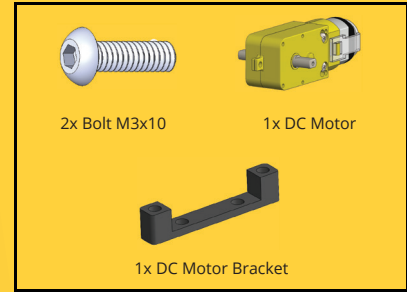
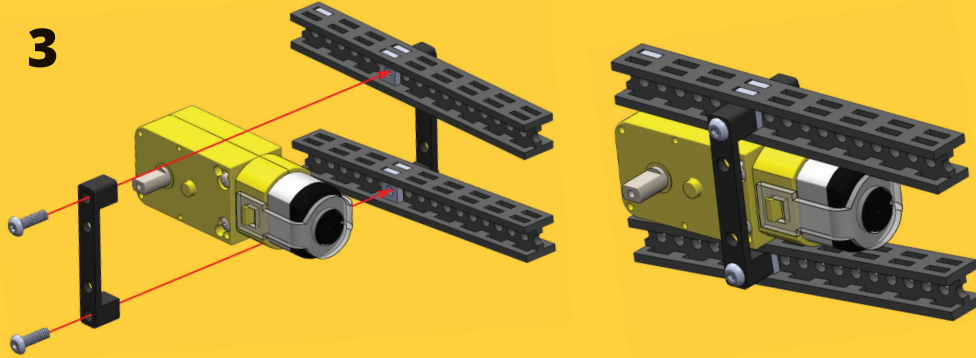
1



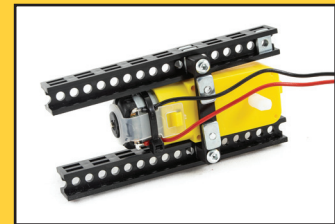
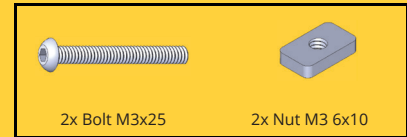
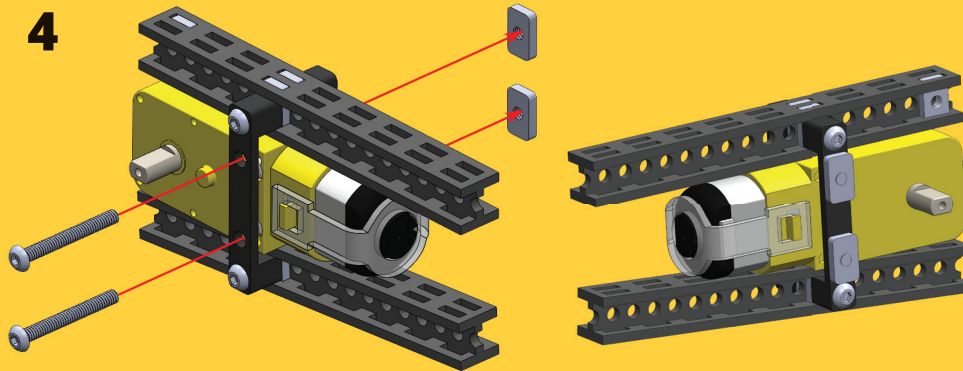
2



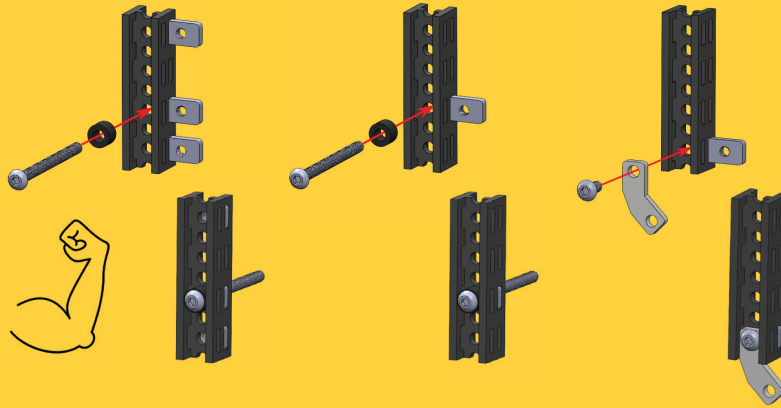
3



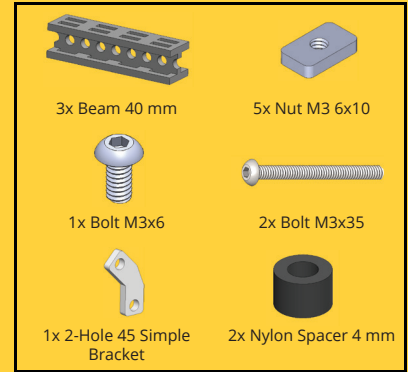
4



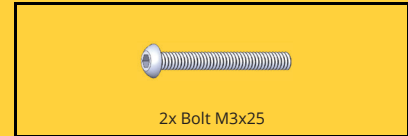
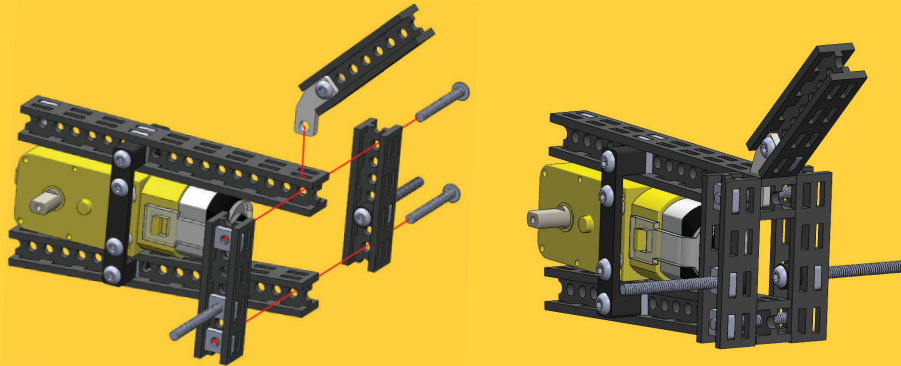
5



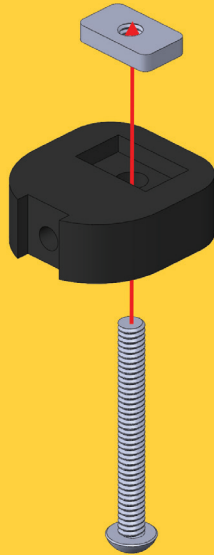
Tighten the bolts firmly.



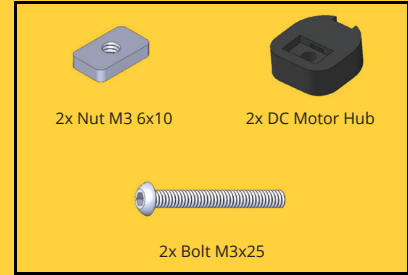
6



7

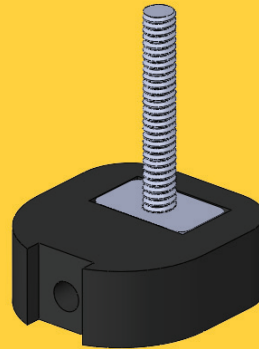


Tighten the bolts firmly.



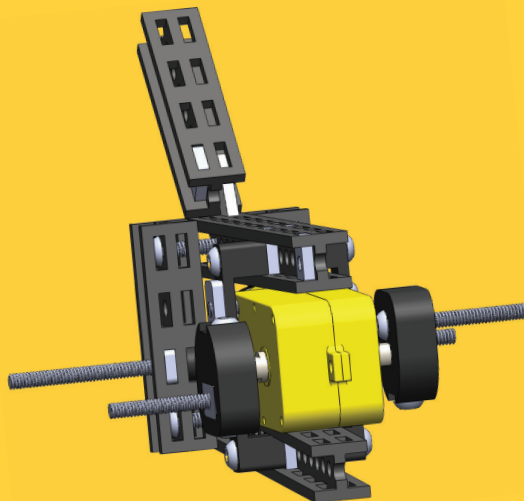
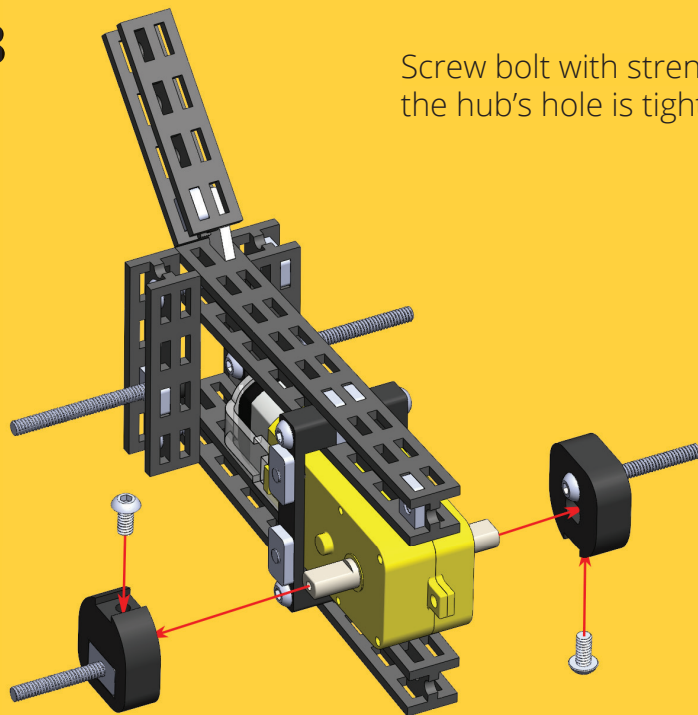
Repeat this step twice.

2x



8

Screw bolt with strength as the hub's hole is tight fit.



9

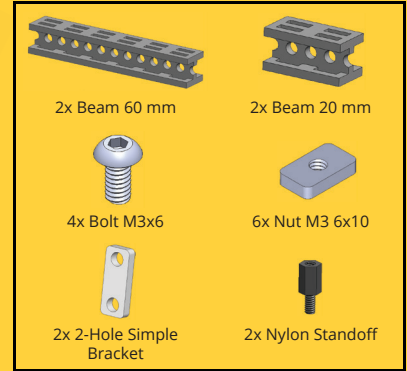


Repeat this step twice.

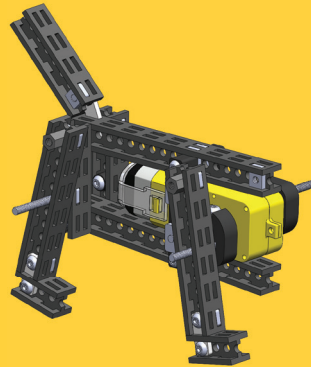
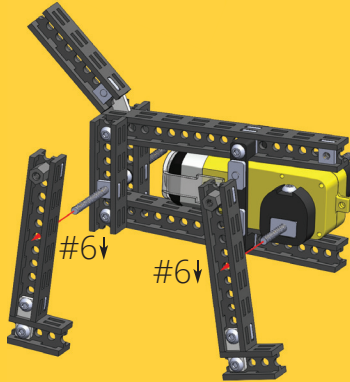
2x



Do not use much force when tightening Nylon Standoffs.



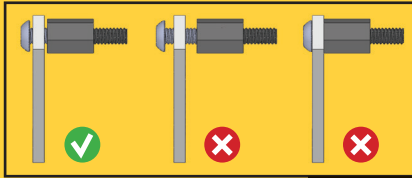
10



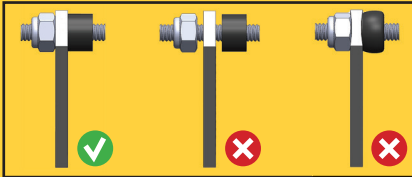
indicates number of circular hole.

↓ indicates counting direction.

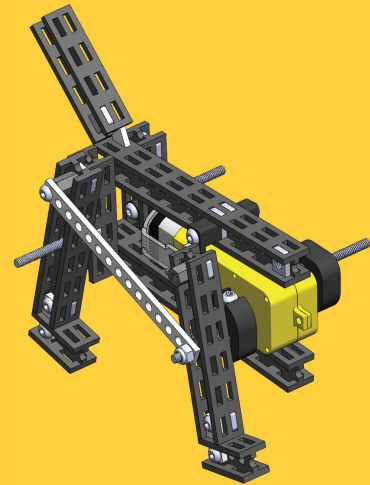
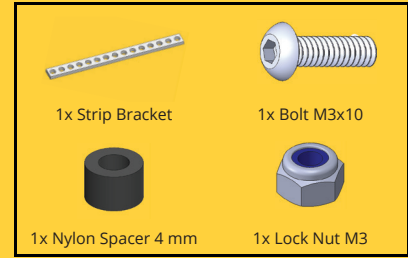
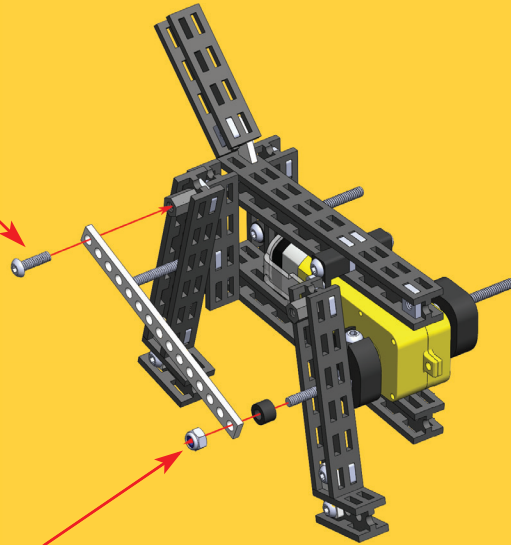
11



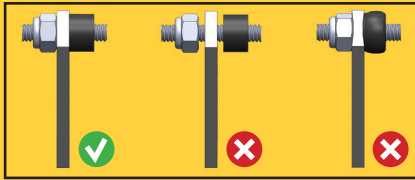
Do not use much force when tightening Bolt into Standoff.



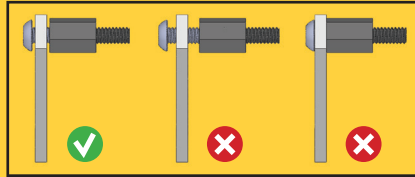
Do not over-tighten Strip Bracket. Bracket must be slightly loose.



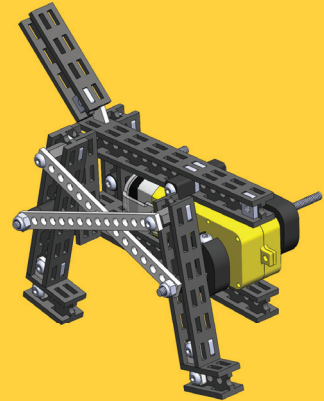
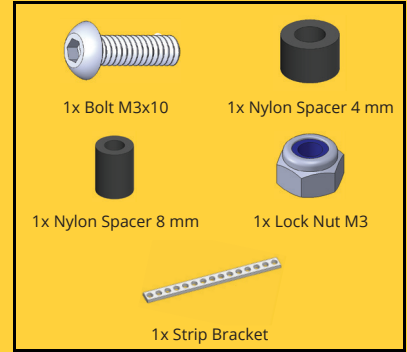
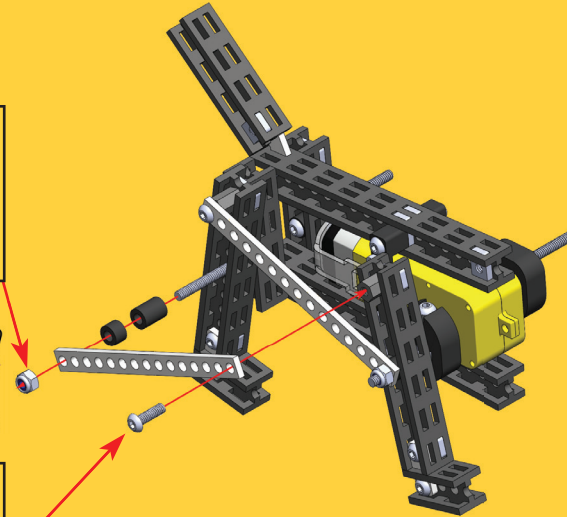
12



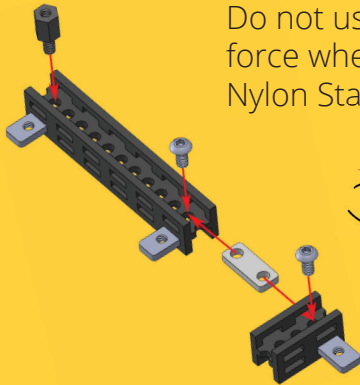
Do not over-tighten Strip Bracket. Bracket must be slightly loose.



Do not use much force when tightening Bolt into Standoff.



13

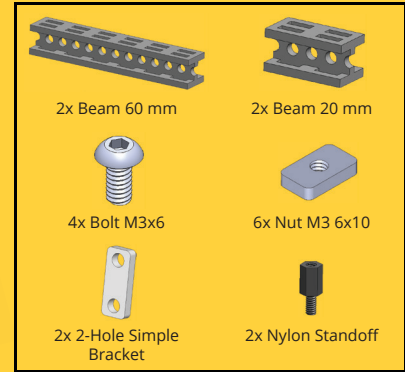


Do not use much force when tightening Nylon Standoffs.

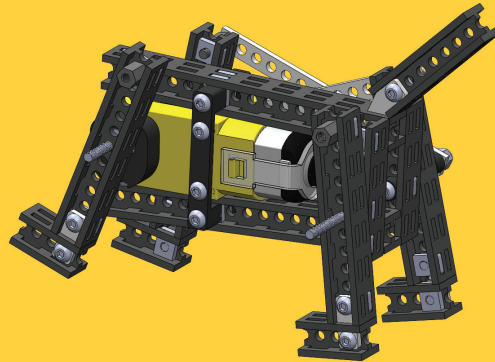
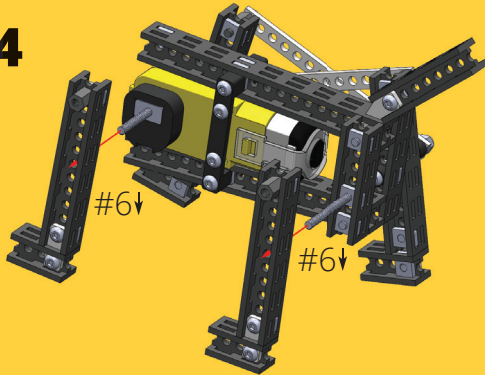


Repeat this step twice.

2x



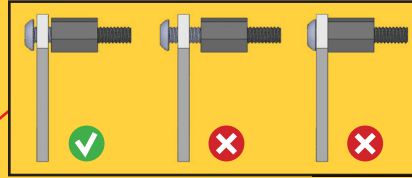
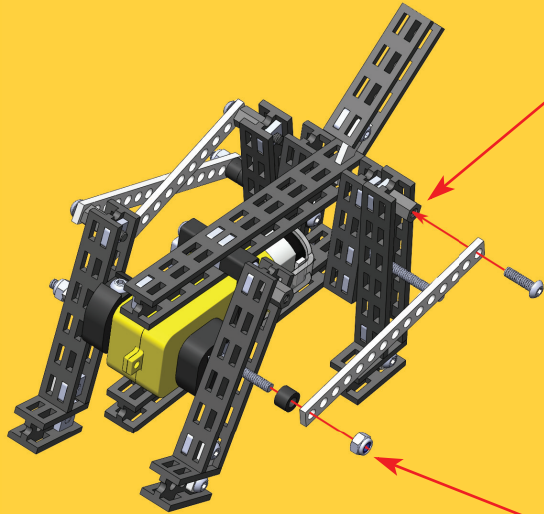
14




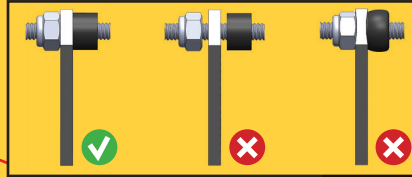
indicates number of circular hole.

↓ indicates counting direction.

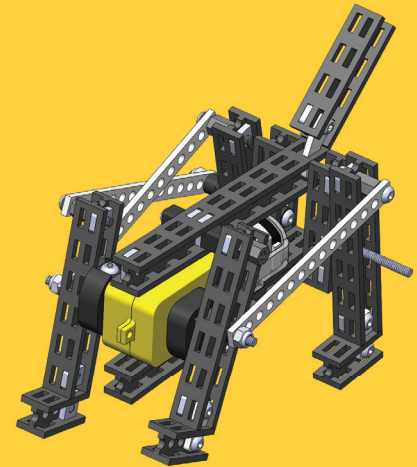
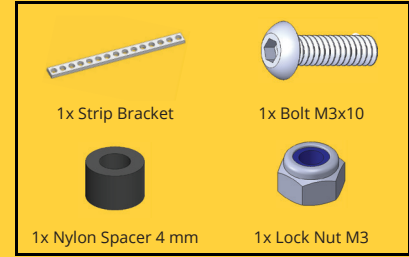
15



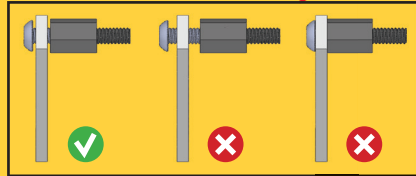
Do not use much force when tightening Bolt into Standoff. 



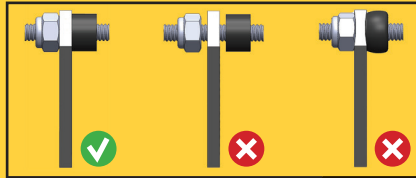
Do not over-tighten Strip Bracket. Bracket must be slightly loose. 



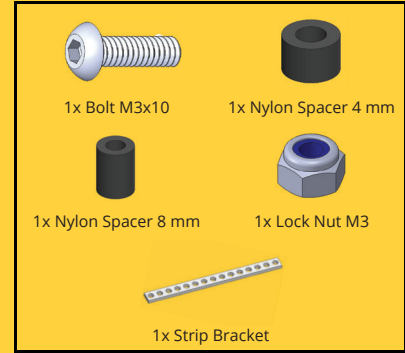
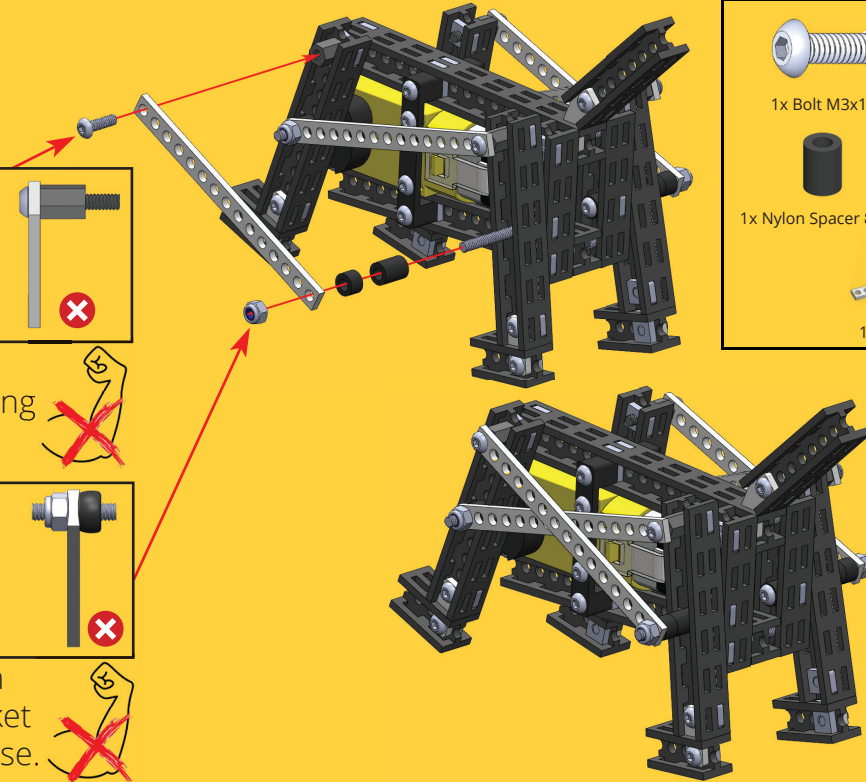
16



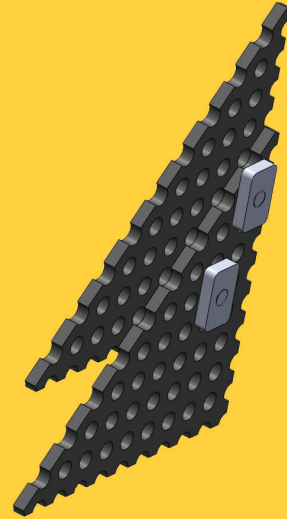
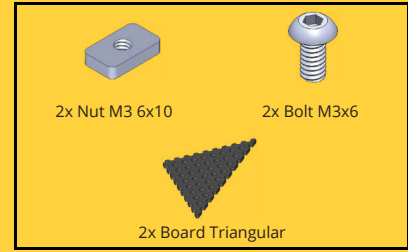
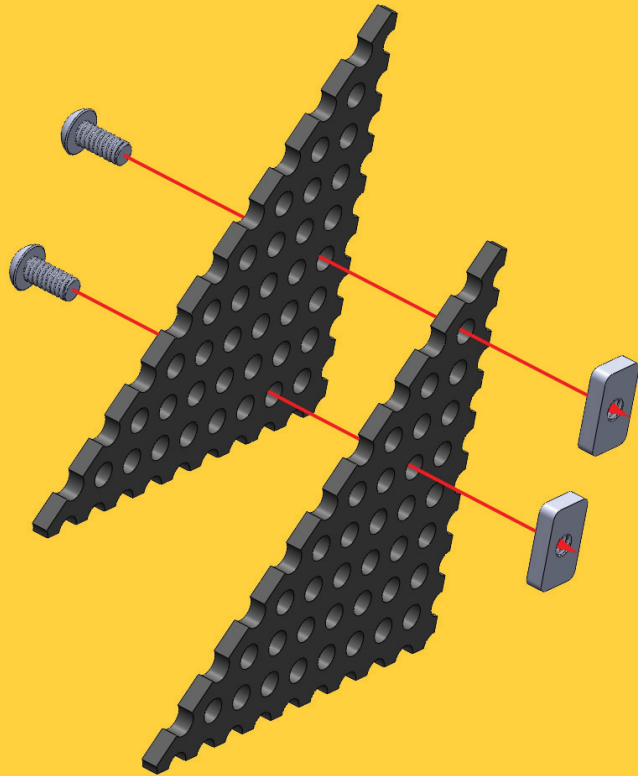
Do not use much force when tightening Bolt into Standoff.



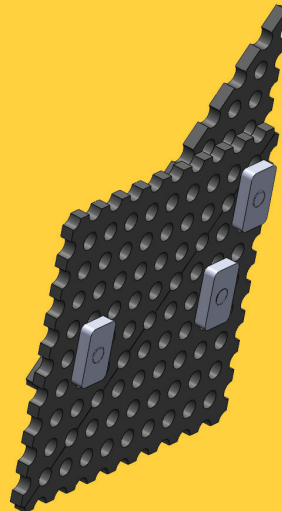
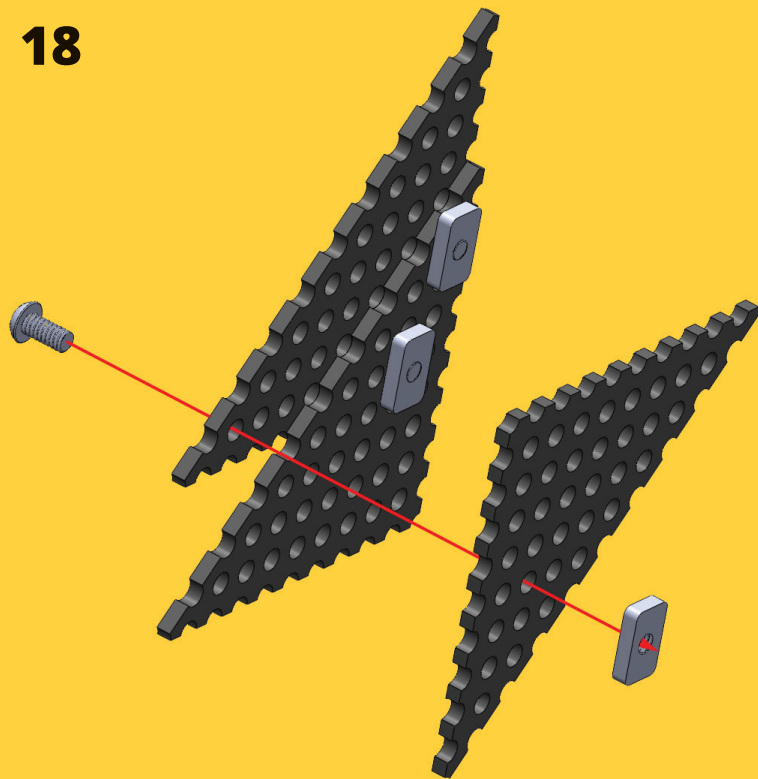
Do not over-tighten Strip Bracket. Bracket must be slightly loose.



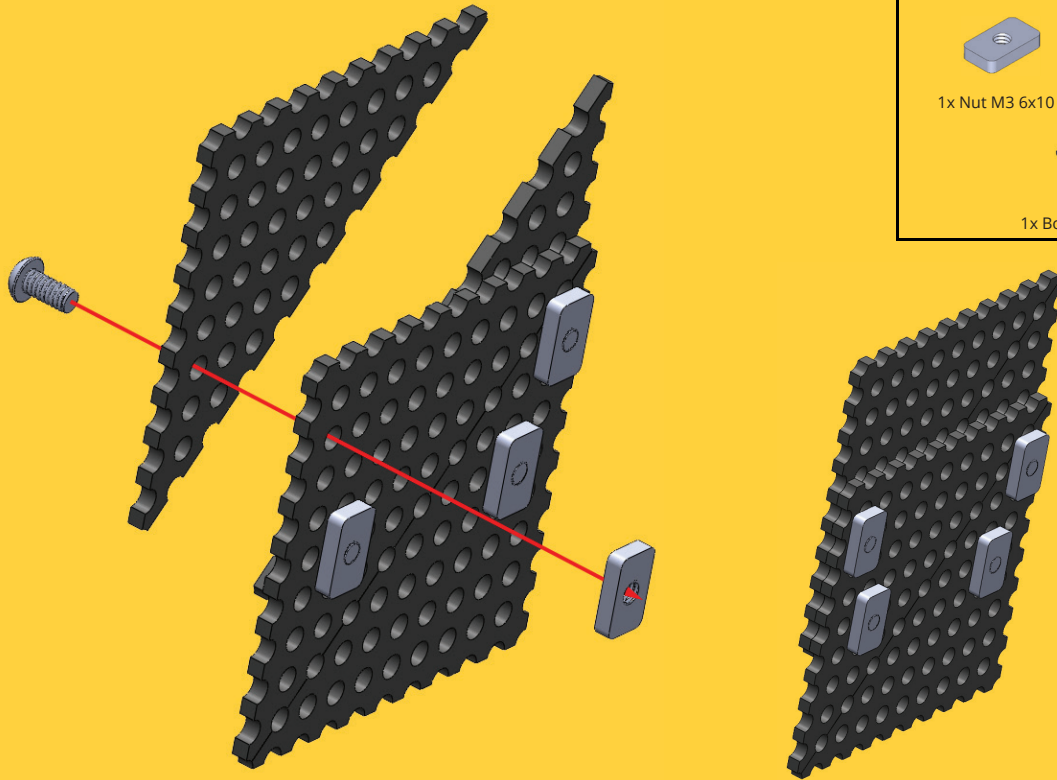
17

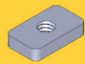
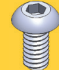



18

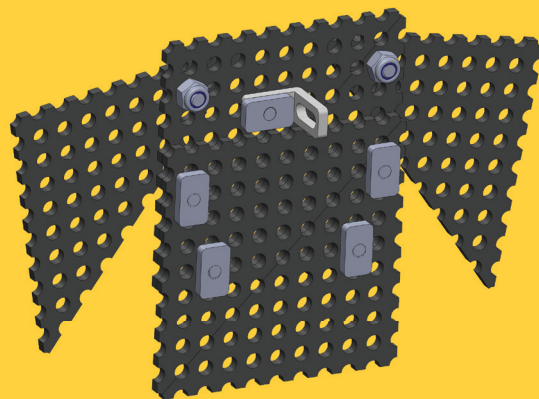
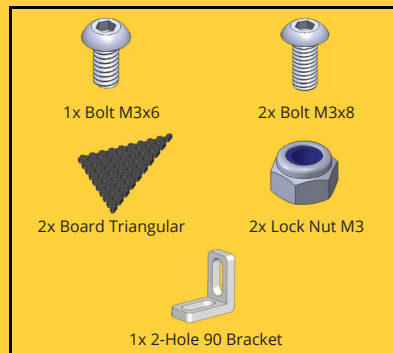
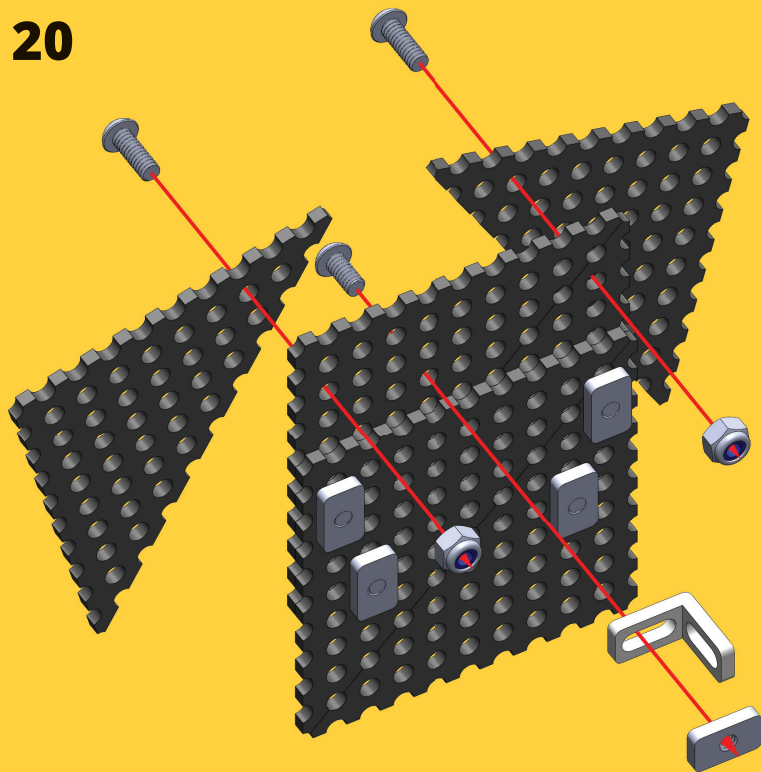


19

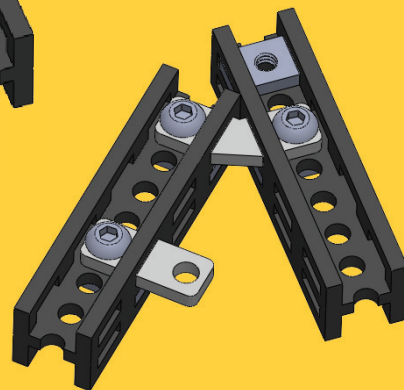
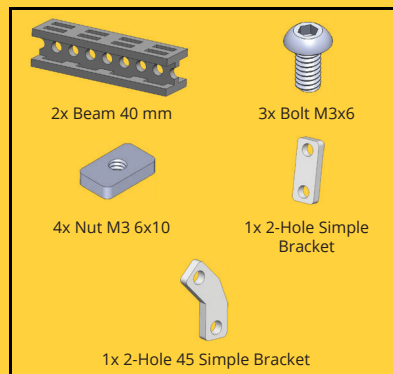
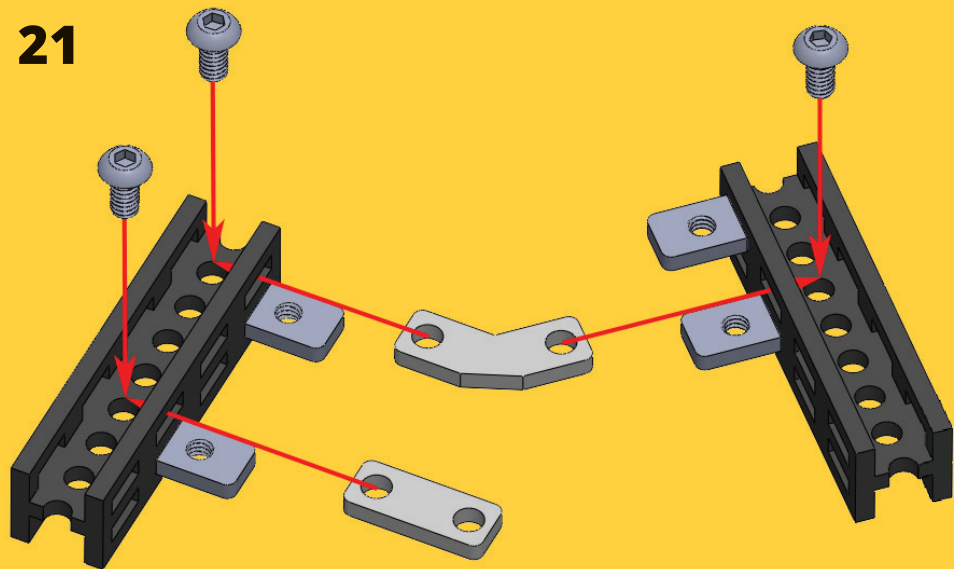


	
1x Nut M3 6x10	1x Bolt M3x6
	
1x Board Triangular	

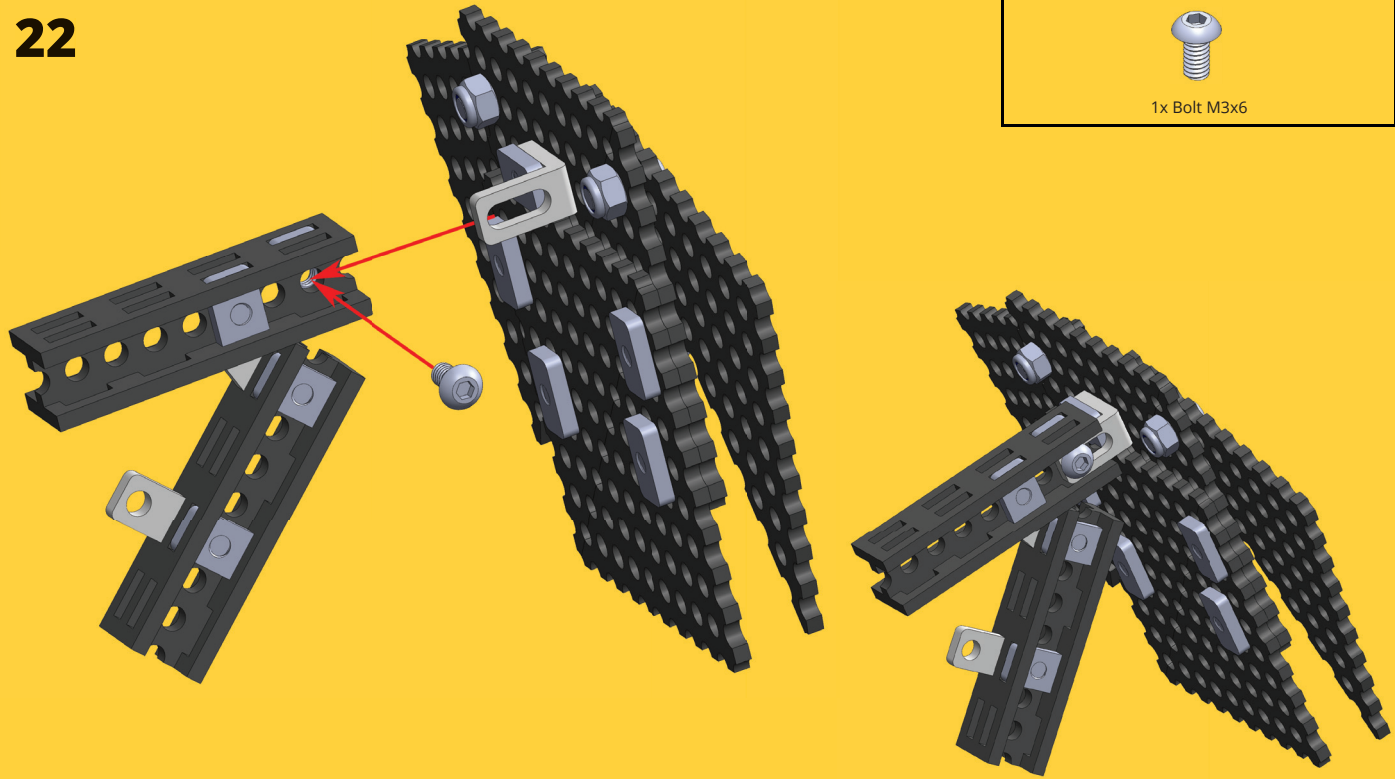
20



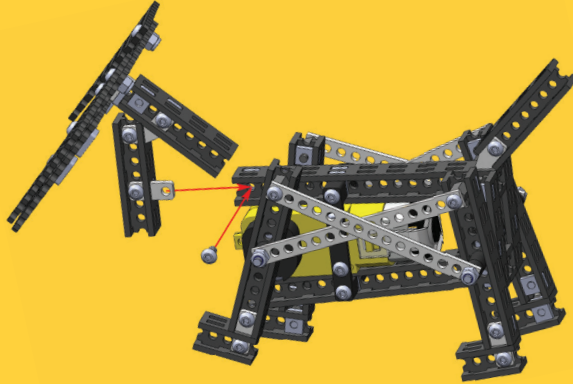
21



22

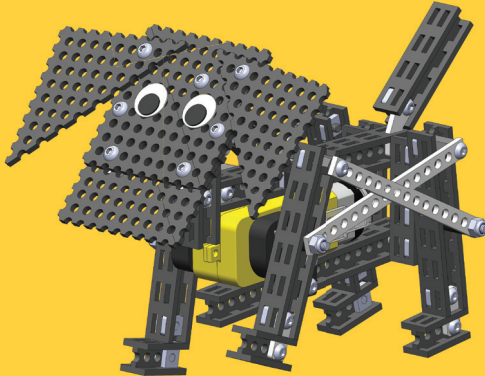


23



1x Bolt M3x6

24



Connect motor
with battery switch.

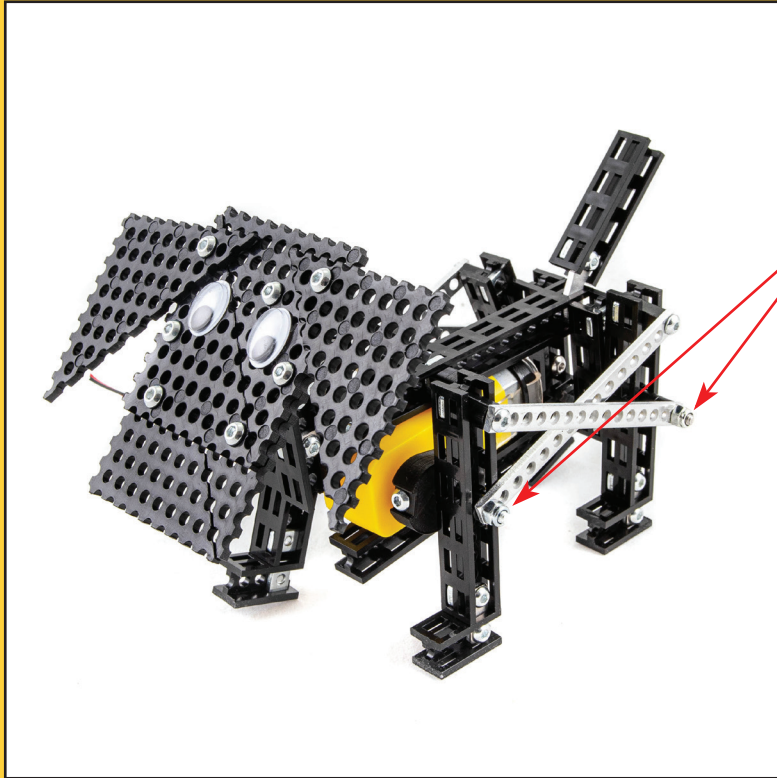


2x Googly Eyes



1x Battery case
with a Switch

Glue Googly Eyes on
top of Dog's head.



Loosen Lock Nuts (if needed, on both sides) if motor cannot move legs.

Tighten Lock Nuts (if needed, on both sides) if legs are too wobbly.

Woohoo!

Your Puppy is now alive and ready to play.





Do not give this product to children aged 3 or below. As with all electronic products, precautions should be observed during handling and use.

Adult supervision required.

Note to adults: to ensure that the child's play is both safe and fun, please review all operating instructions and safety rules with your child.

SAFETY WARNINGS:

- Do not pick up toy while in motion.
- Keep fingers, hair, and loose clothing away from moving parts, to avoid the injury.
- If the toy is dirty, please clean it with dry and soft cloth.
- Do not expose the vehicle to high temperature, high humidity, or direct sunlight.
- Indoor use only. Functions best on hard, flat surface.
- Do not put this product in water,
- Do not disassemble or modify the motor.

TO AVOID BATTERY LEAKAGE:

- Do Always follow the instructions carefully. Use only batteries specified and be sure to insert them correctly by matching the + and - polarity markings.
- Do not mix old batteries and new batteries or standard (carbon-zinc) with alkaline batteries.
- Remove exhausted or dead batteries from the product.
- Remove batteries if product is not to be played with for a long time.
- Do not short-circuit the supply terminals.
- RECHARGEABLE batteries: Do not mix these with any other type of batteries. Always remove from the product before recharging. Recharge batteries under adult supervision. DO NOT RECHARGE OTHER TYPES OF BATERIES.
- Should this product cause, or be affected by local electrical interference, move it away from other electrical equipment.

KEEP THIS INSTRUCTION MANUAL AND THE PRODUCT BOX AS IT CONTAIN IMPORTANT INFORMATION FOR FUTURE REFERENCE.

Due to the continuous product improvement, the pictures on this manual may differ slightly from the actual product. Please adhere to actual product instead.

Totem Maker names and logos are registered trademarks. All rights reserved.

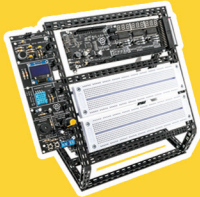
www.totemmaker.net
Aldrea filalas Totem, UAB
Saulėtekio al. 15-709, Vilnius, 10224, Lithuania
For customer support please contact: support@totemmaker.net

 **WARNING:**

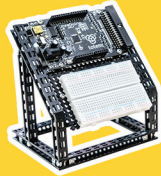
CHOKING HAZARD - Small parts.
Not for children under 3 years.



Discover more of Totem:



Mini Lab



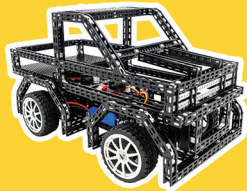
Micro Lab



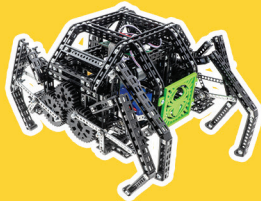
4 Wheel Drive



Young Engineer Kits



T.R.U.C.K. Car Kit



Spider

Find us here:

 @totemaker

 totem_maker

 totemmaker

 @totemaker

And tag us in your post
with **#totemaker**

www.totemaker.net