

1



4x



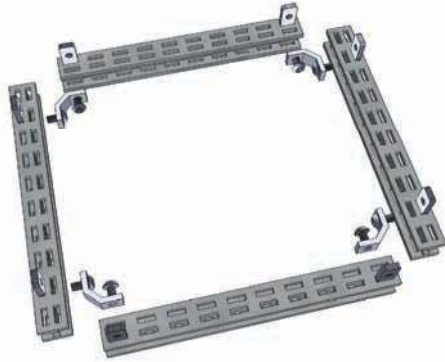
8x



4x



8x



2



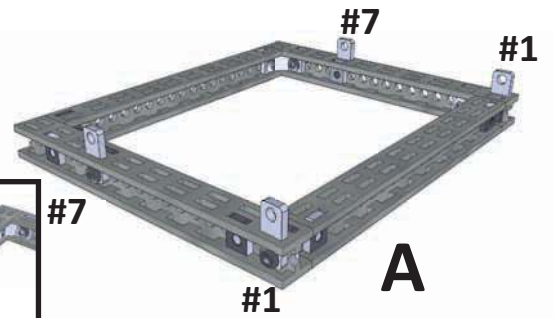
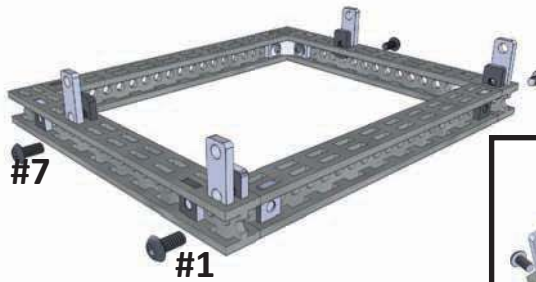
4x



4x



4x



3



2x

9cm

4cm



4x



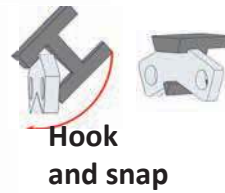
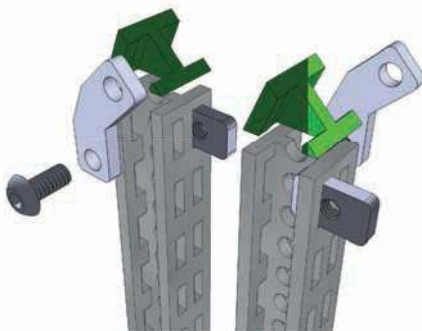
4x



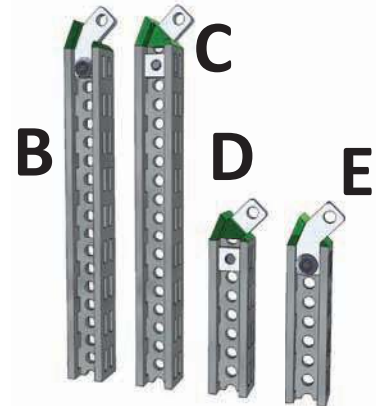
4x



4x



Hook and snap



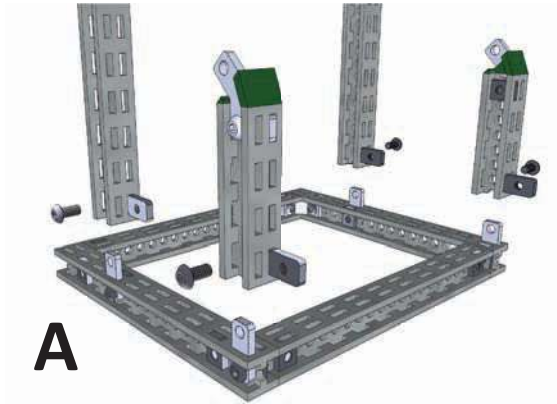
4



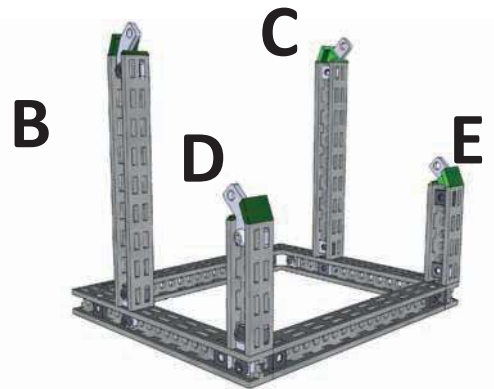
4x



4x 6mm



A



5

2x

10cm



6x



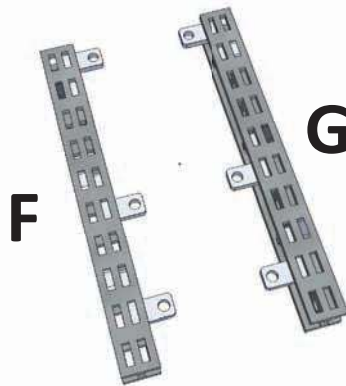
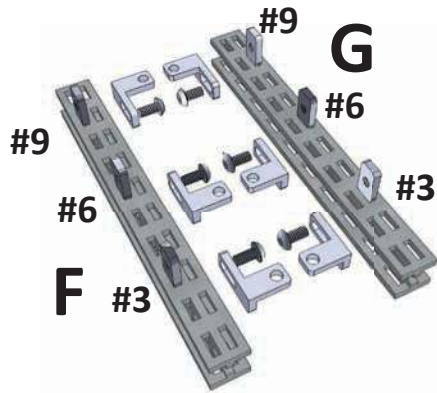
6x



3x



3x



6

2x

10cm



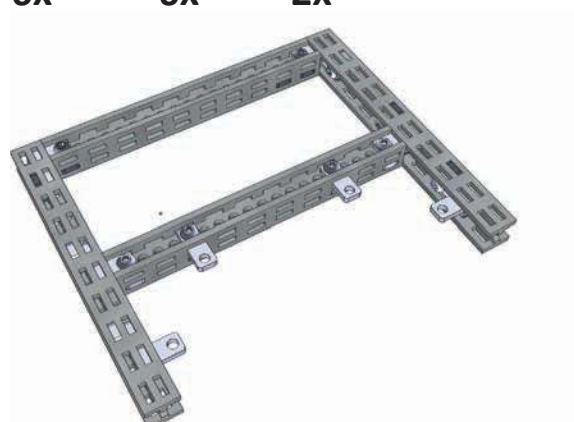
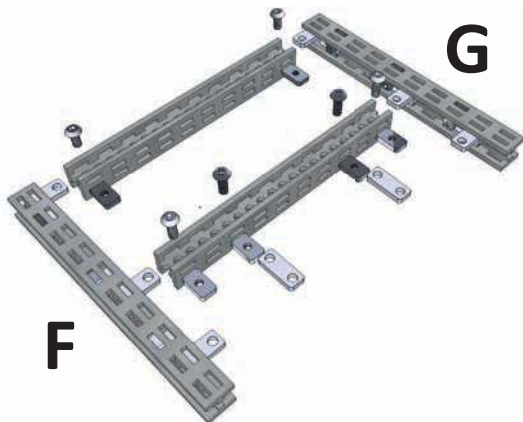
6x



6x



2x



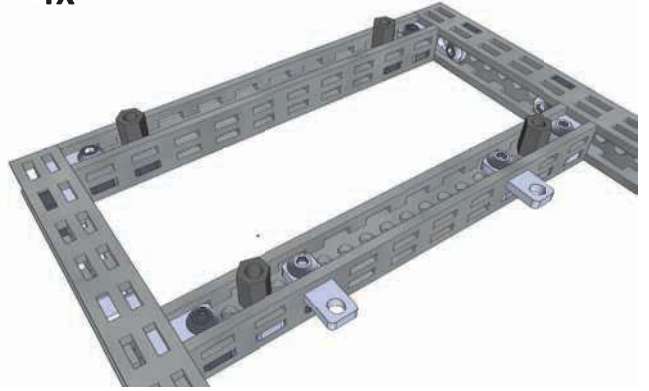
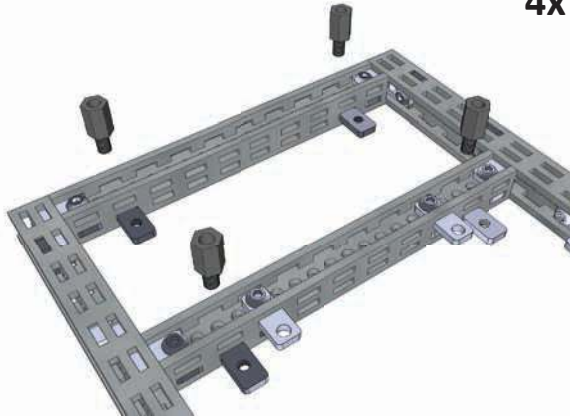
7



4x



4x



8



4x

8 mm



4x

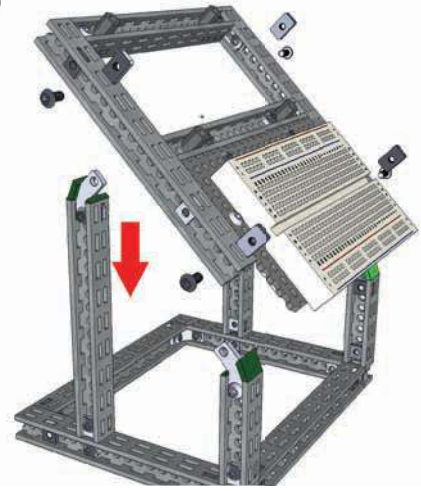


4x

6 mm



4x



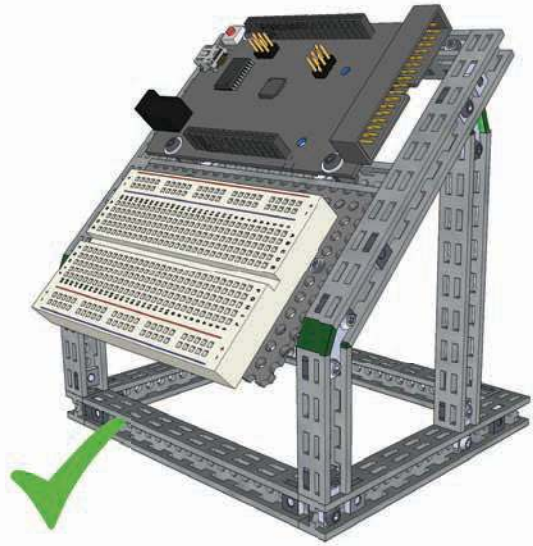
9



4x

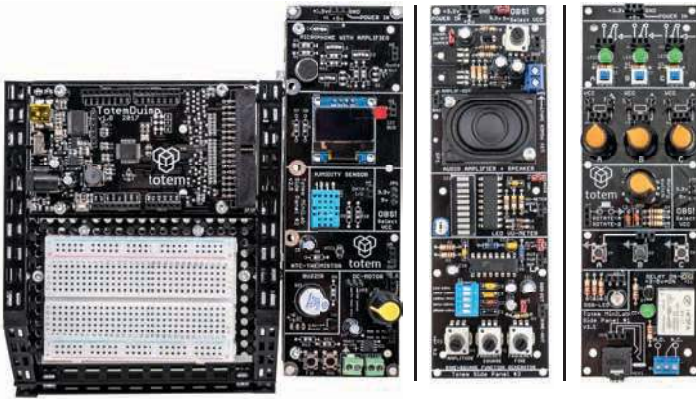


4x

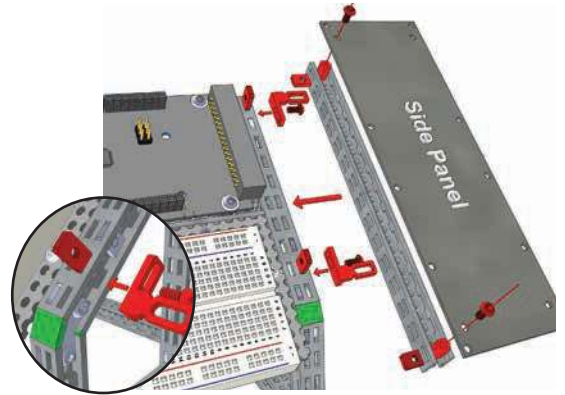


## Side Panels

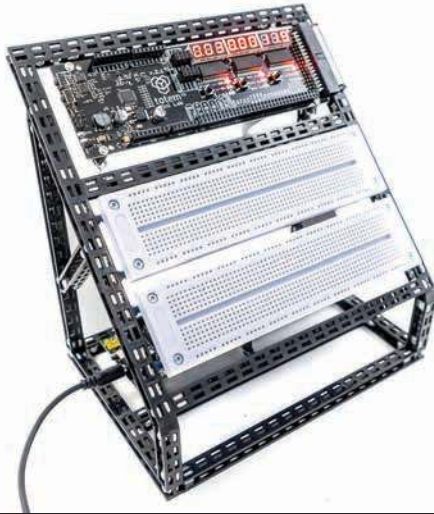
Side panels contain groups of various functionalities:  
Input/Output, Sensors and Audio.



Attaching side panels  
to the frame



## Mini Lab



Get more features with Mini Lab:

- Different power supplies: -5v, 3.3v, 5v, 12v , and one you can regulate;
- Measurement of voltages with 3 ranges, outputs from 3 DACs;
- Easy access to all the Arduino short circuit protected I/O pins;
- All signals available in a single row just above the breadboards.



**Follow us:**

[www.totemmaker.net](http://www.totemmaker.net)



@Totemmaker



@totemmaker



Totemmaker