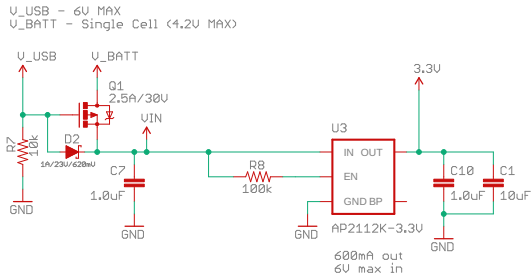
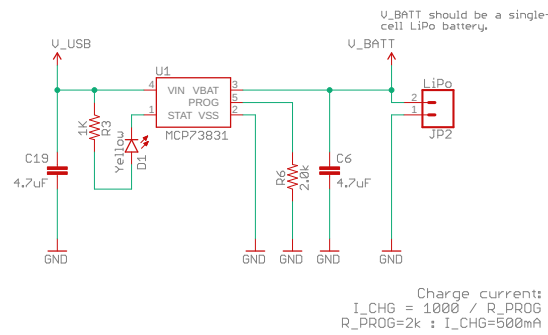


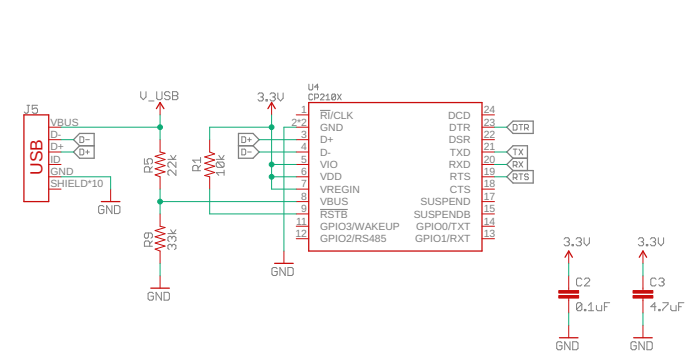
### Voltage Regulator and Battery Charger



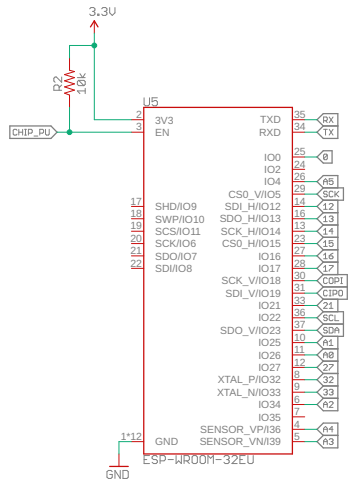
### Lithium-Polymer Battery Charger (1-cell)



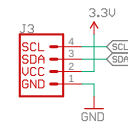
### CP2104/2N (USB-to-Serial Converter)



### Espressif ESP32



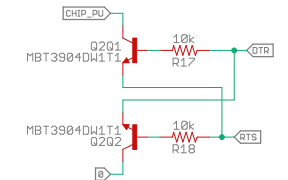
### QWICC Connector



### Auto-Reset

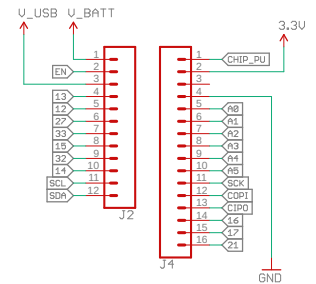
Pin	Default	Boot	Download
GPIO0	1	1	0
U0TXD	1	1	x
GPIO2	0	x	0
GPIO4	0	x	x
MTDO	1	x	x
GPIO5	1	1	x

If U0TXD, GPIO2, GPIO5 are floating, GPIO0 determines boot mode



If DTR is LOW, toggling RTS from HIGH to LOW resets to run mode.  
If RTS is HIGH, toggling DTR from LOW to HIGH resets to bootloader.

### Headers



THIS IS A FOUR-LAYER BOARD!

Released under the Creative Commons Attribution Share-Alike 4.0 License  
<https://creativecommons.org/licenses/by-sa/4.0/>

TITLE: ESP32\_Thing\_Plus\_UFL

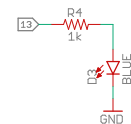
Design by: Mike Hord  
Revised by: Alex Wende, Pete Lewis (u.fl version)

Date: 11/23/2020 11:12 AM

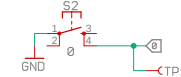
REV: v10  
Sheet: 1/1



### GPIO13 LED



### GPIO0 Button



### Reset Button

