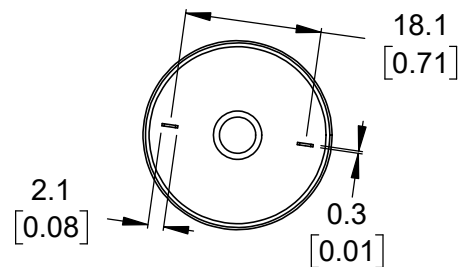
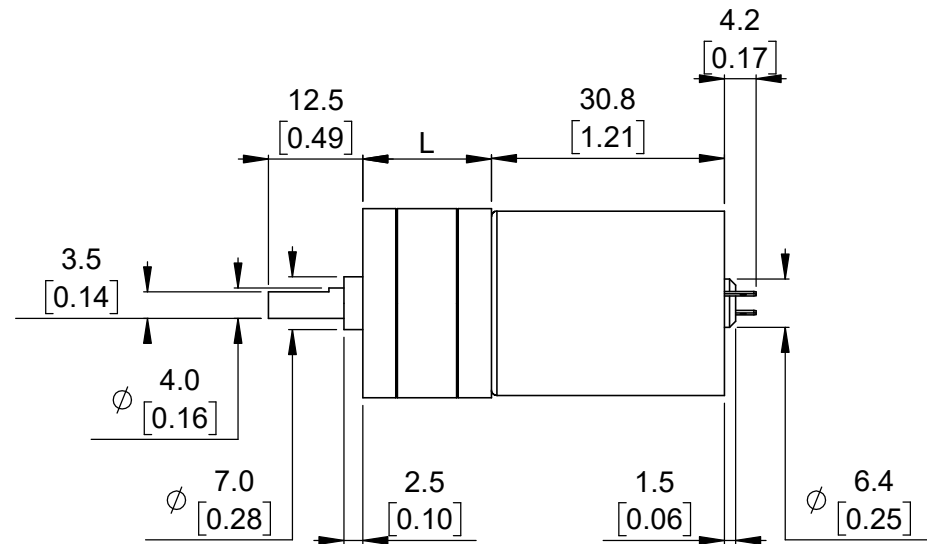
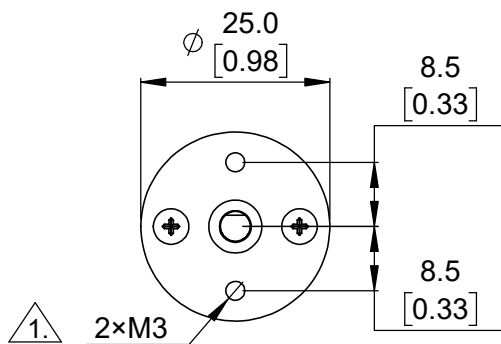
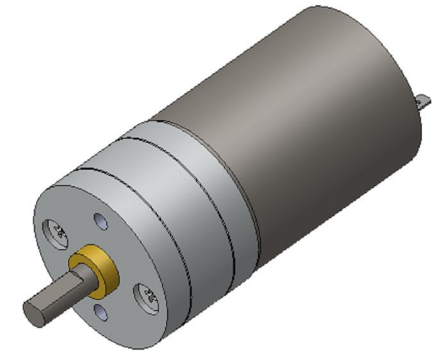


Gear ratio	L
4.4:1	17 mm [0.68 in]
9.7:1	
20.4:1	19 mm [0.75 in]
34:1	21 mm [0.83 in]
47:1	
75:1	23 mm [0.91 in]
99:1	
172:1	25 mm [0.98 in]
227:1	
378:1	27 mm [1.06 in]
499:1	



1. Depth of mounting holes is 6.0 mm [0.24 in].
2. To get the specified scale, select 100% in print settings.

Scale: 1:1

<https://www.pololu.com/category/115/25d-mm-gearmotors>

Name:  
Metal Gearmotor 25D mm  
(without encoder)

Item number:  
1570-1577, 1581-1591, 3201-  
3207, 3225-3233, 3249-3258

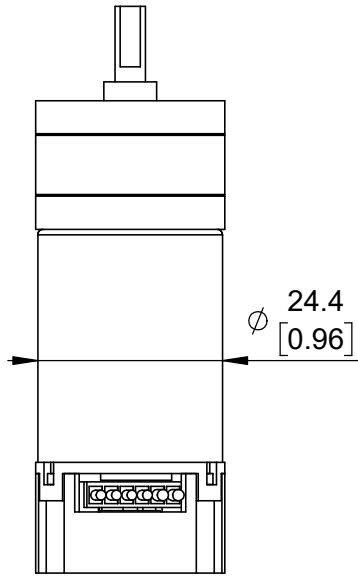
Drawing date:  
8 February 2019

Dev code:  
—

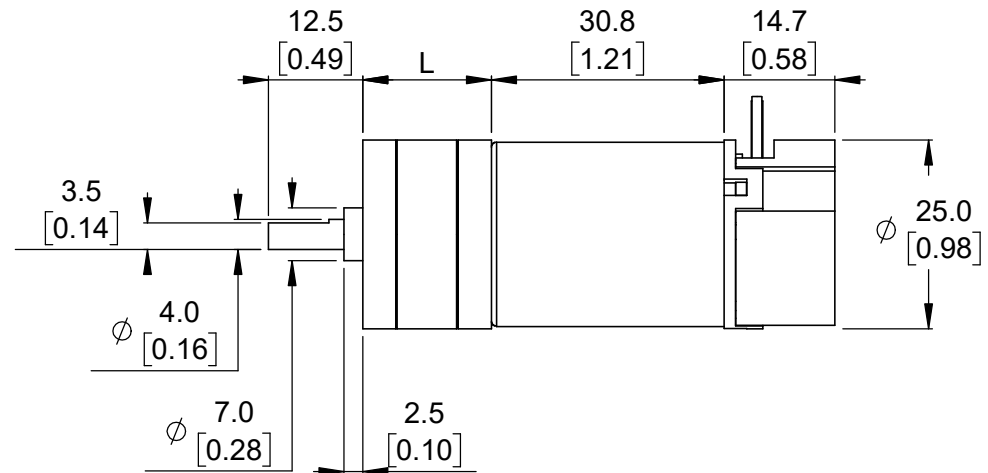
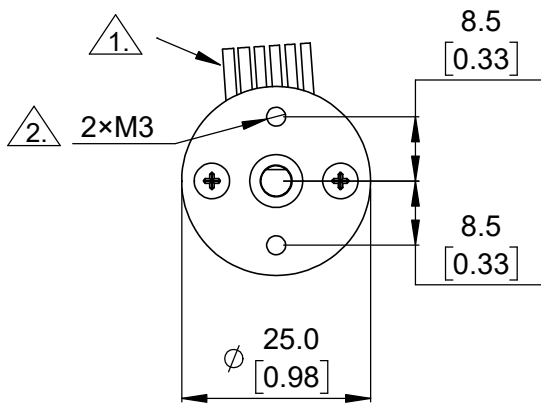
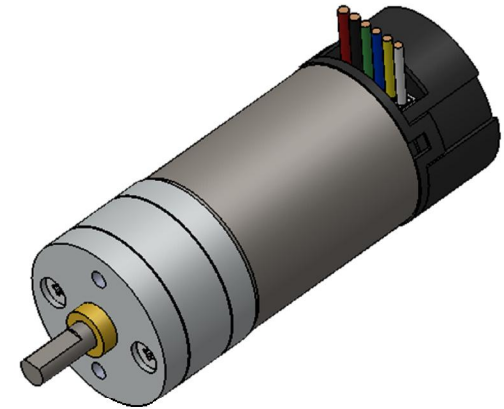
Units: mm  
[in]

Material:  
mixed

  
Pololu  
Robotics & Electronics  
© 2019 Pololu Corporation



Gear ratio	L
4.4:1	17 mm [0.68 in]
9.7:1	17 mm [0.68 in]
20.4:1	19 mm [0.75 in]
34:1	21 mm [0.83 in]
47:1	21 mm [0.83 in]
75:1	23 mm [0.91 in]
99:1	23 mm [0.91 in]
172:1	25 mm [0.98 in]
227:1	25 mm [0.98 in]
378:1	27 mm [1.06 in]
499:1	27 mm [1.06 in]



- 1.
- 2.
- 3.

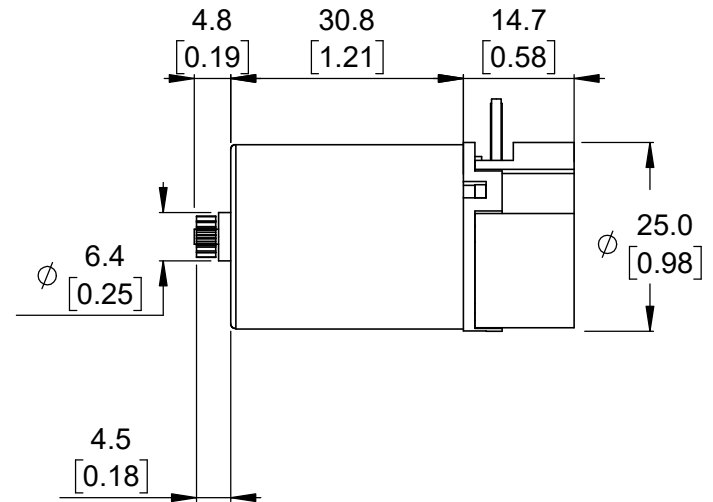
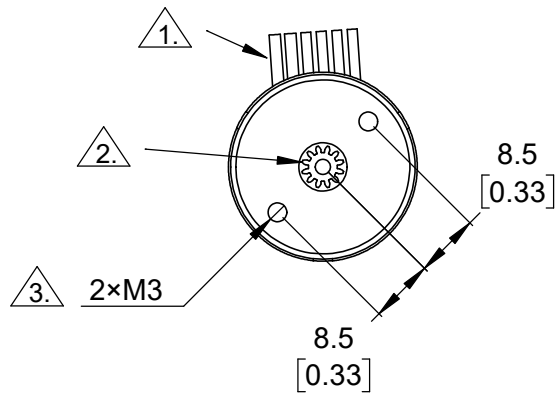
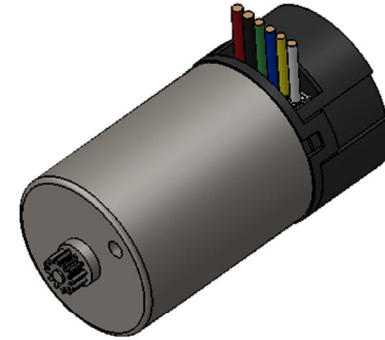
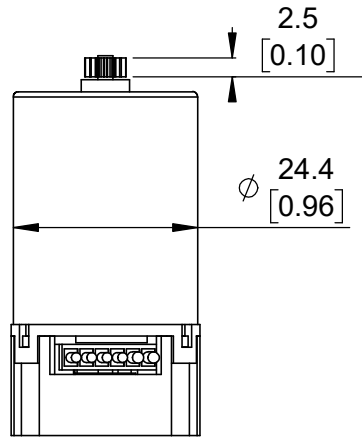
Leads are approximately 200 mm [8 in] long and are terminated by a 1×6 female header with a 2.54 mm [0.1 in] pitch.  
 Depth of mounting holes is 6.0 mm [0.24 in].  
 To get the specified scale, select 100% in print settings.

Scale: 1:1

<https://www.pololu.com/category/115/25d-mm-gearmotors>

Name: Metal Gearmotor 25D mm with 48 CPR Encoder		Item number: 4801-4811, 4821-4831, 4841- 4851, 4861-4871 4881-4891
Drawing date: 8 February 2019	Dev code: —	
Units: mm [in]	Material: mixed	





1.

Leads are approximately 200 mm [8 in] long and are terminated by a 1×6 female header with a 2.54 mm [0.1 in] pitch.

2.

The non-removable pinion gear has a metric module 0.4, 12 teeth, and a 20° pressure angle.

3.

Depth of mounting holes is 2.0 mm [0.08 in].

4.

To get the specified scale, select 100% in print settings.

Scale: 1:1

<https://www.pololu.com/category/115/25d-mm-gearmotors>

Name:  
Motor with 48 CPR Encoder for  
25D mm Metal Gearmotors  
(no gearbox)

Item number:  
4800, 4820, 4840,  
4860, 4880

Drawing date:  
8 February 2019

Dev code:  
—

Units: mm  
[in]

Material:  
mixed

  
Robotics & Electronics  
© 2019 Pololu Corporation