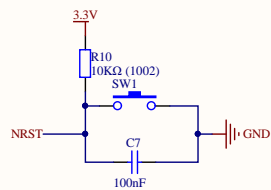
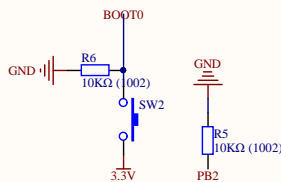


User button KEY v1.3

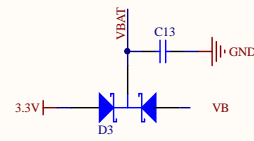


Reset circuit

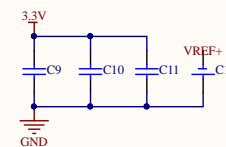
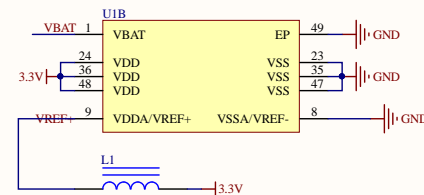


BOOT settings

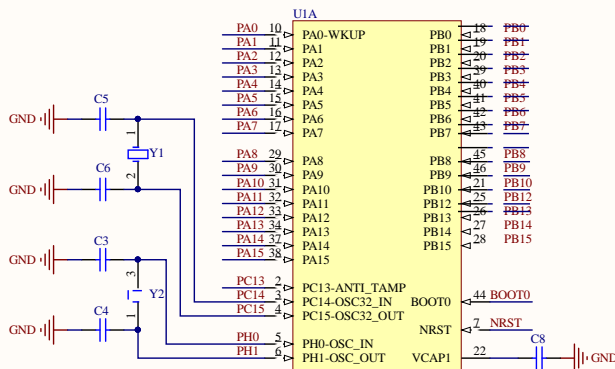
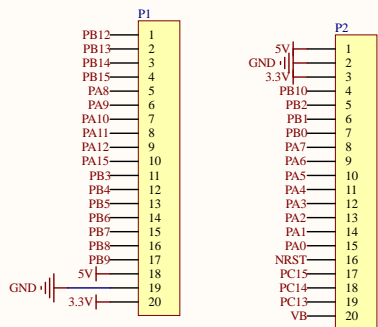
V1.2  
Modify BOOT jumper to BOOT0 button,  
BOOT1 10K pulldown



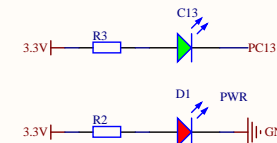
RTC power supply



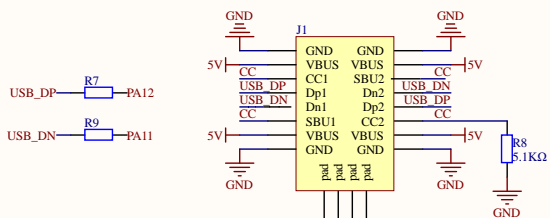
STM32 power supply section



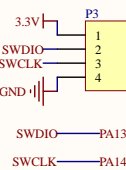
V1.1 will change 18 from GND to 5V,  
support direct drive one way servo



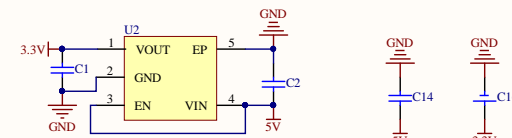
LED indicators



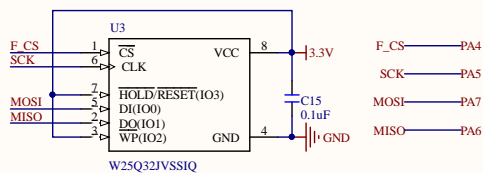
Type-C interface



SW debug download interface



5V -> 3.3V power conversion



Optional Flash

Title		Bottom PCB has 1.3 mark	
MiniF4	Size	Number	Revision
A3			
Date:	2019/9/14 Saturday		Sheet of
File:	E:\ADL_MiniF4xx_v2_1.3.SchDoc		Drawn By: