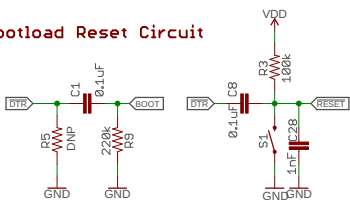
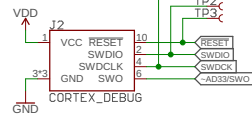


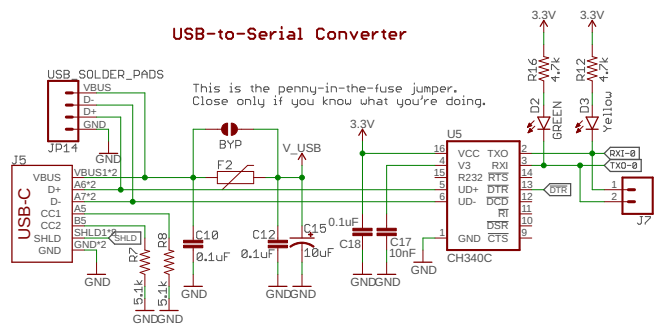
**Bootload Reset Circuit**



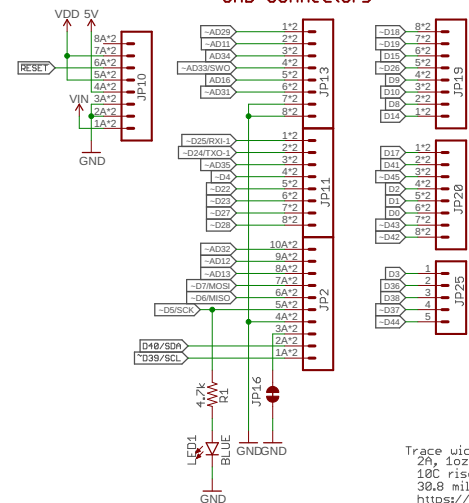
**JTAG**



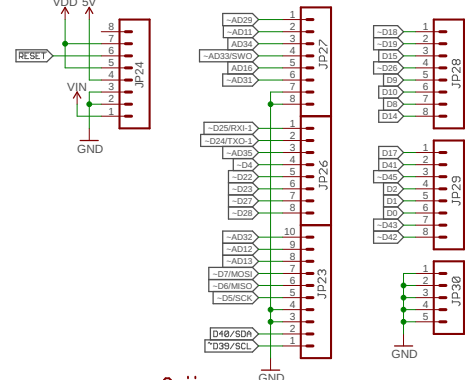
**USB-to-Serial Converter**



**SMD Connectors**

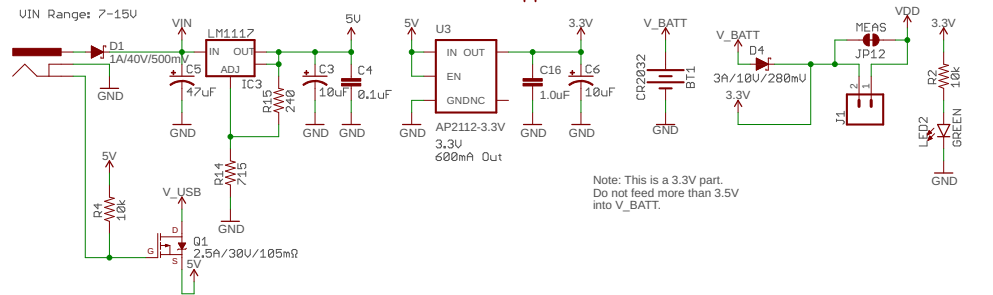


**PTH Connections**



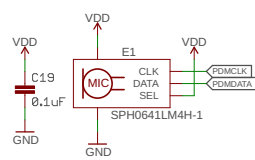
Trace width calculation:  
 25% 1oz copper  
 10C rise in temperature  
 30.8 mil width  
<https://www.eeweb.com/tools/external-pcb-trace-max-current>

**Power Supplies**



Note: This is a 3.3V part. Do not feed more than 3.5V into V\_BATT.

**Microphone**



Released under the Creative Commons Attribution Share-Alike 4.0 License  
<https://creativecommons.org/licenses/by-sa/4.0/>

TITLE: RedBoard-Artemis-ATP

Design by: N. Seidle

Date: 7/30/2019 8:13 PM

REV: U10

Sheet: 1/2

