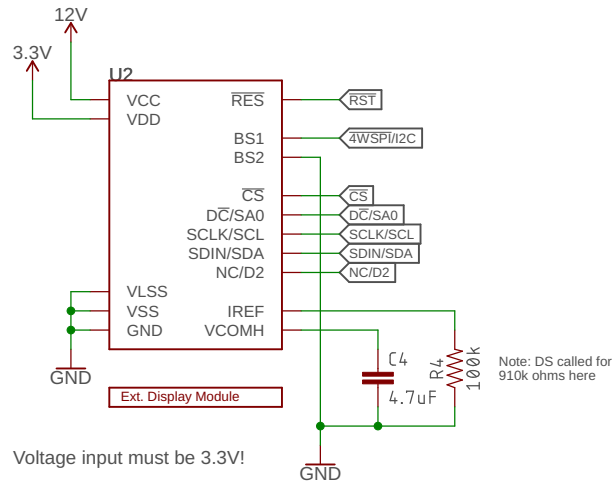
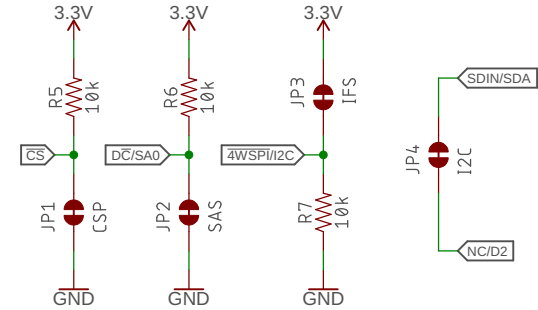


OLED



Voltage input must be 3.3V!

Options



JP1 By default CS is held low for I2C. Cut allow MCU control of CS for 4WSPI mode

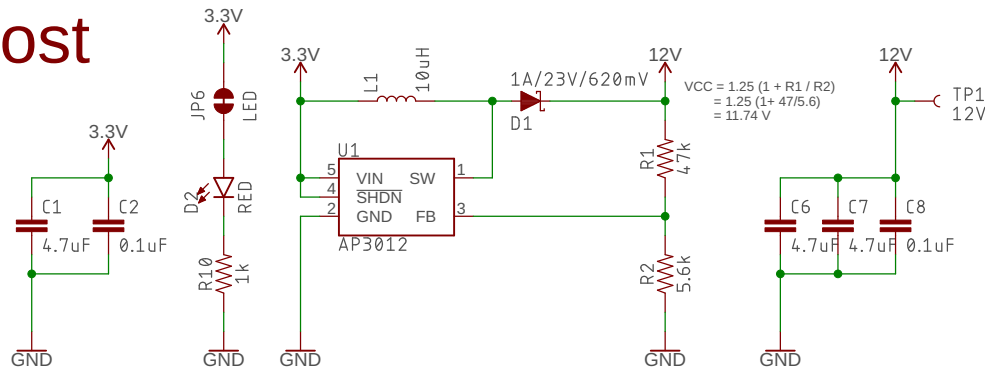
Slave Address (7bit) is set according to:
D/C : 7 bit address (HEX)

JP2 0 : 0x3C (Default)
1 : 0x3D

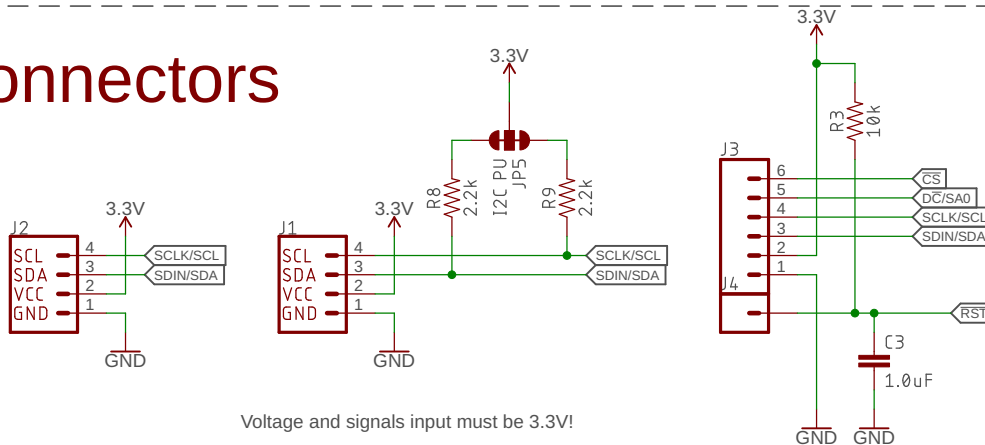
JP3 The BS1 pin determines I2C (HIGH, Default) or 4WSPI (LOW) interface selection.

JP4 For I2C mode this jumper needs to be closed. Open for 4WSPI mode

Boost



Connectors



Released under the Creative Commons Attribution Share-Alike 4.0 License
<https://creativecommons.org/licenses/by-sa/4.0/>

TITLE: SparkFun_Transparent_Graphical_OLED_Breakout

Design by: Owen Lyke

REV:
v10

Date: 2/28/2019 11:53 AM

Sheet: 1/1