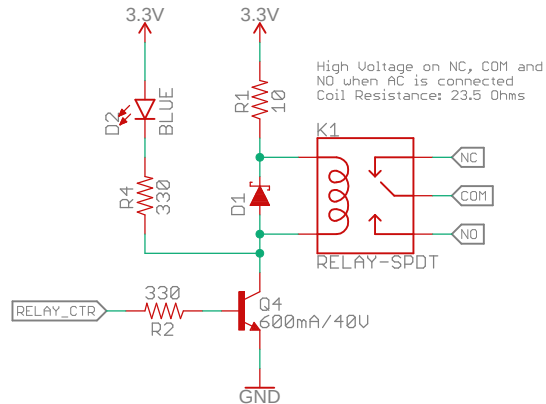
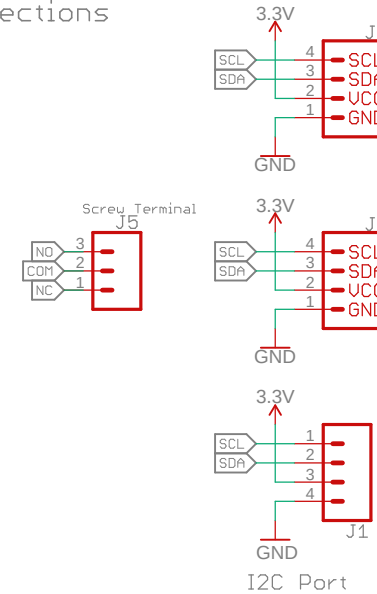


Relay

The board is designed for a 15°C temperature rise allowing for a continuous current draw of 5.5A. The relay can handle 10 A at 110VAC for short pulses (under 20 seconds).

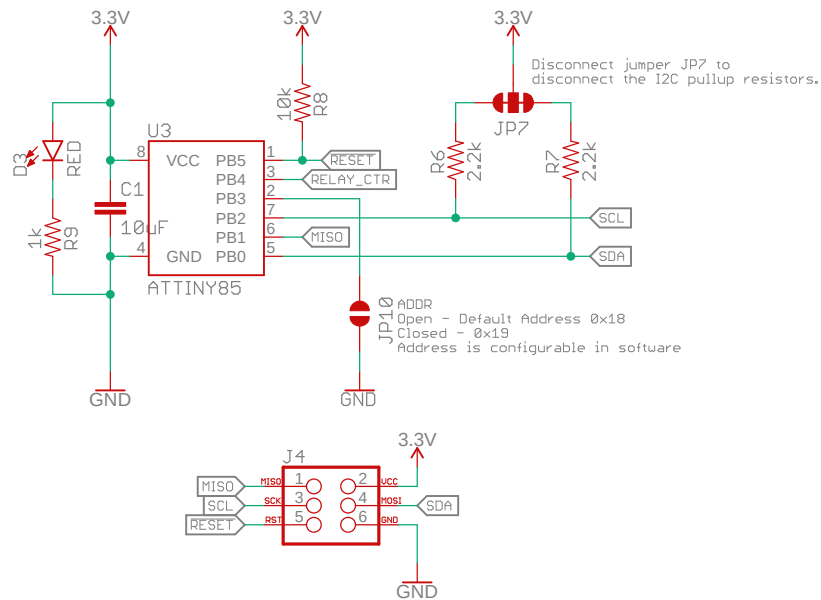


Connections



ATTiny85

VCC: 1.8V-5.5V



Released under the Creative Commons

Attribution Share-Alike 4.0 License

<https://creativecommons.org/licenses/by-sa/4.0/>



TITLE: Qwiic_Single_Relay

Design by:Kevin Kuwata

Revision By:Andy England

REV:
v10

Date: 1/3/2019 12:27 AM

Sheet: 1/1