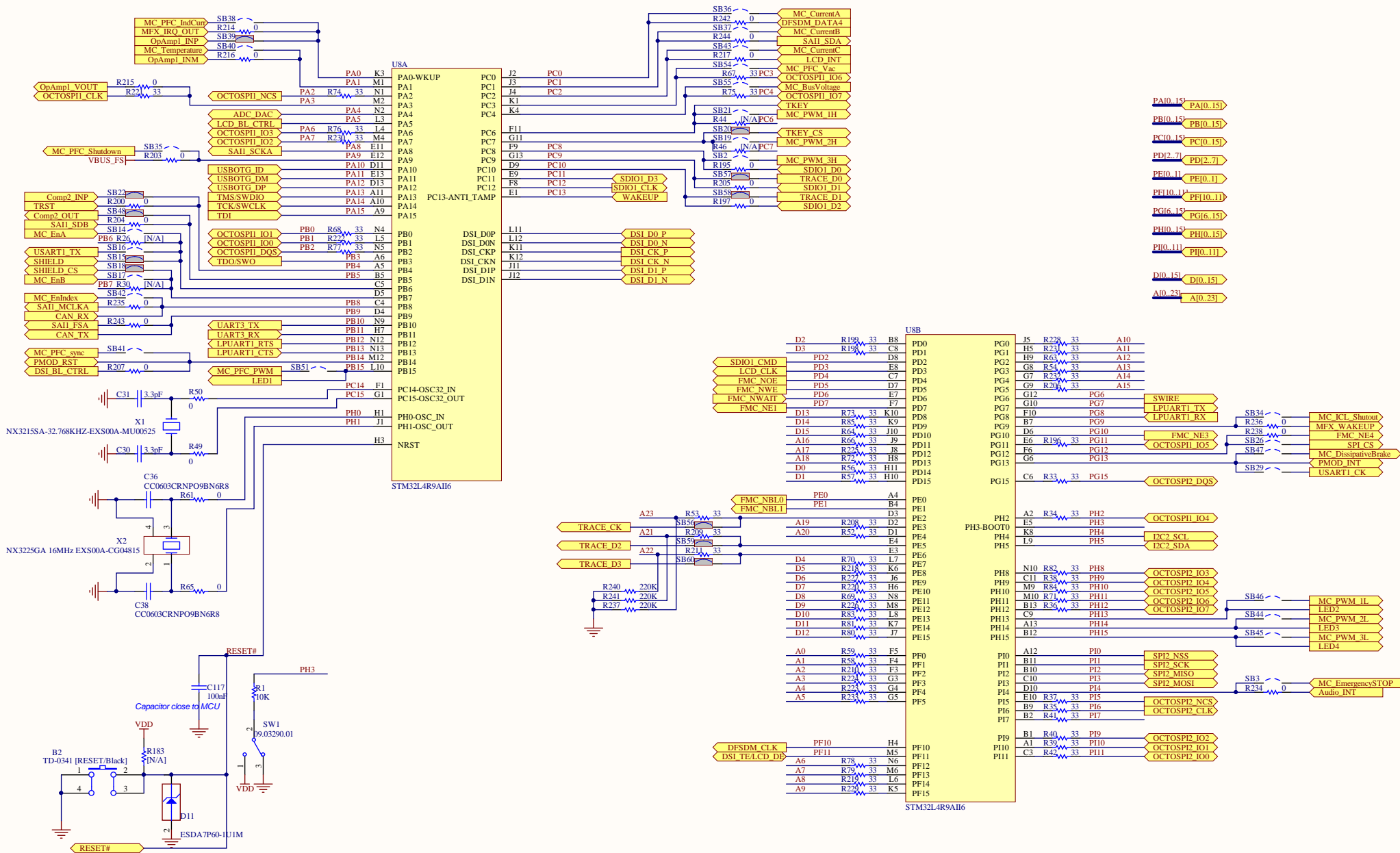
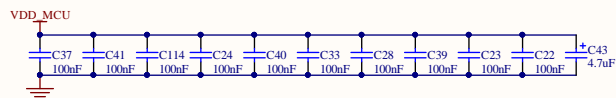
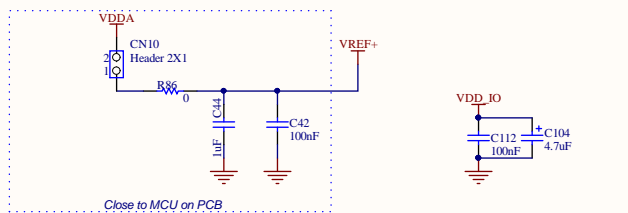
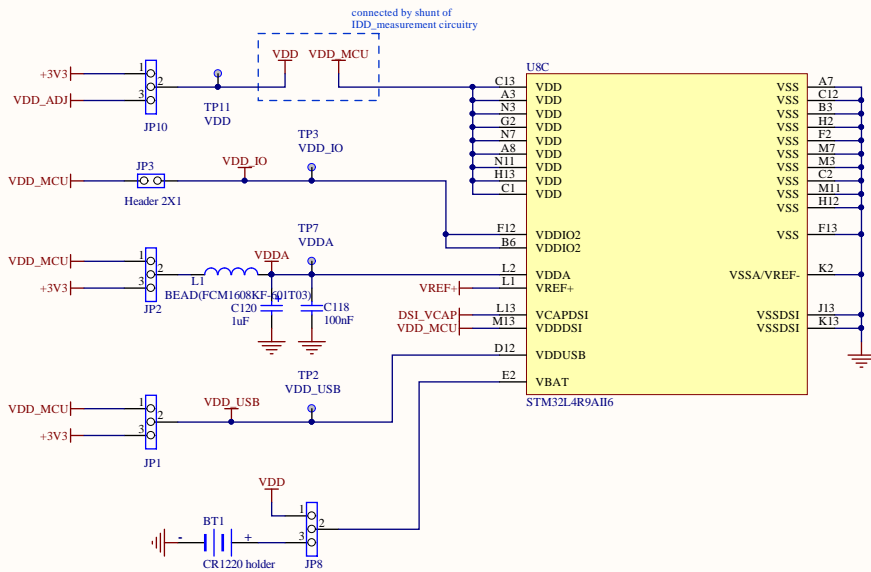
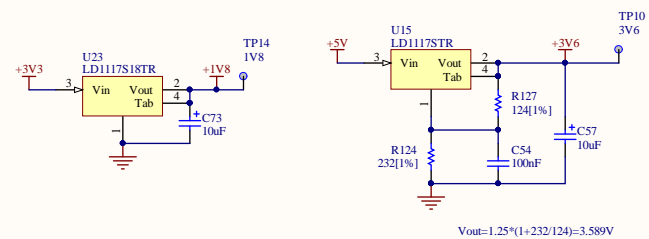
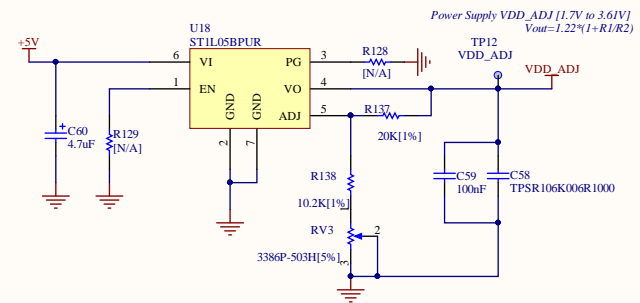
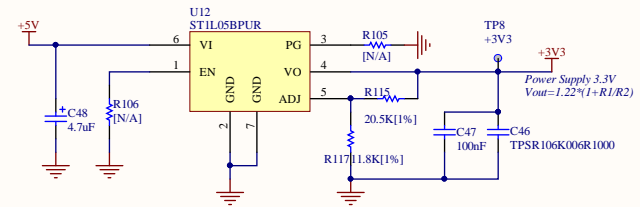
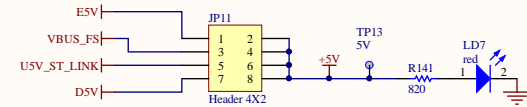
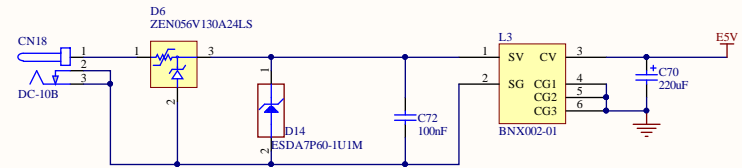


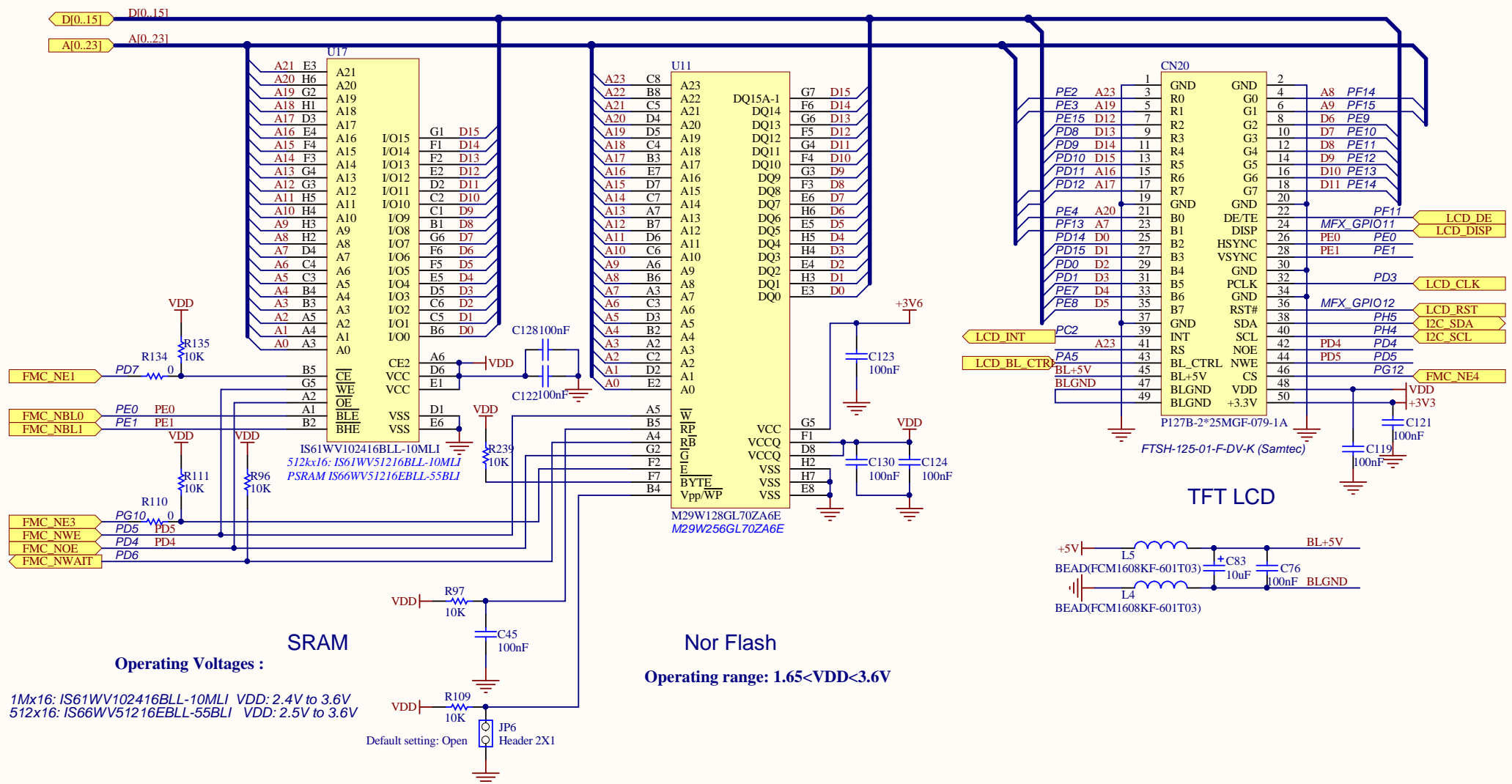
- Rev B.1: 1. open U4 pin5 and add D15
2. update X2 part number
3. C30 and C31 changed to 3.3pF
4. change H1 and H4 size of footprint to C9D4.5
5. Update U10, U19 and U20 ESDALC6V1W5 with new footprint
6. add D11, D12, D13 for key and joystick button ESD protection
7. update Z1 to D14 ESDA7P60-1U1M
8. LED remap:
LD1 → LD5
LD2 → LD6
LD3 → LD7
LD4 → LD8
LD5 → LD4
LD6 → LD3
LD7 → LD2
LD8 → LD1



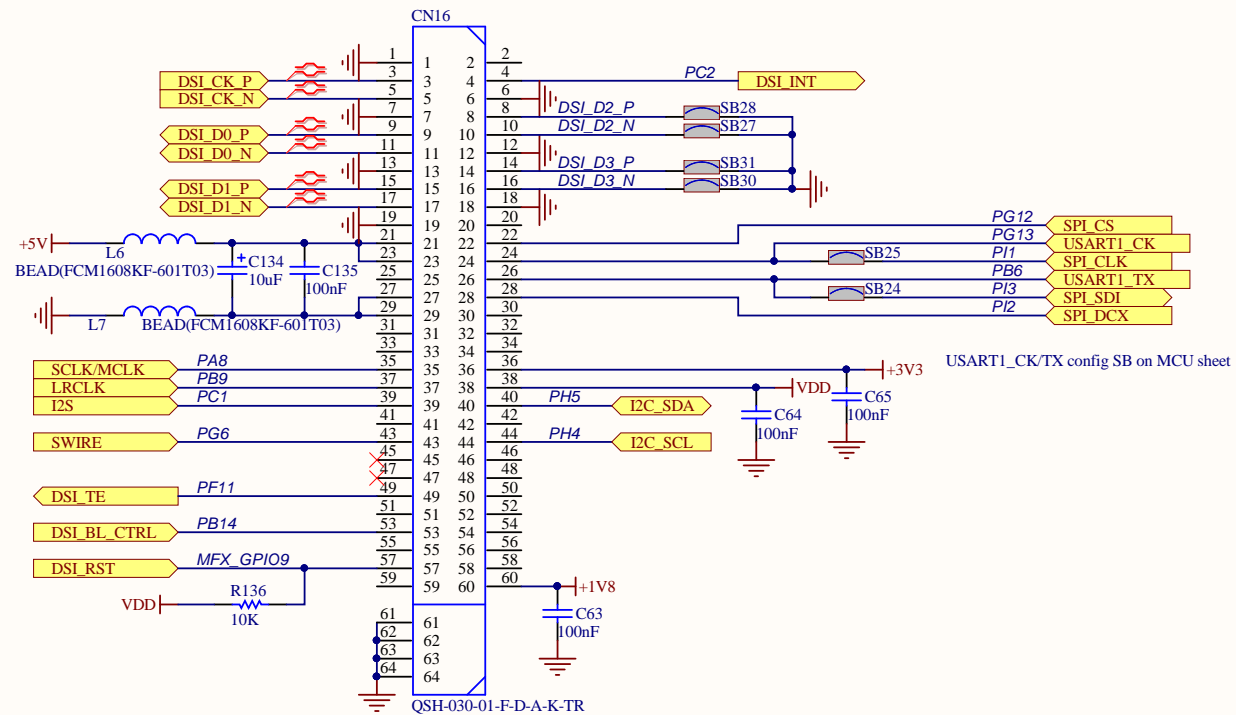


Recommendation:
100nF decoupling capacitor for each VDD pin





DSI LCD



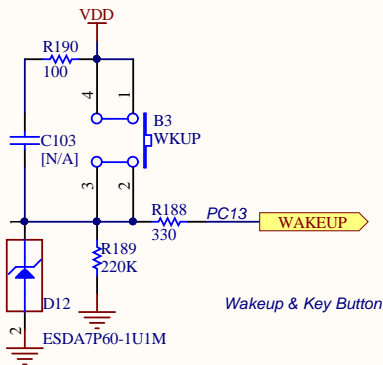
Operating range:

1. GVO LCD IEG1120TB103GF-001 works at $1.65V < VDD < 3.3V$
2. MB1166 board works at $VDD = 3.3V$ only

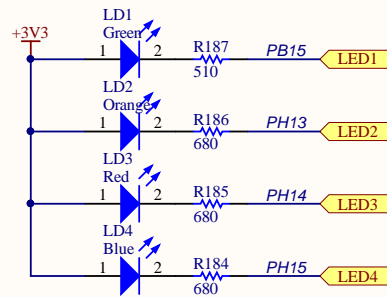
Title: DSI LCD connector		
Project: STM32L4Rx-EVAL		
Size: A4	Reference: MB1313	Revision: B.1
Date: 7/12/2017	Sheet: 6 of 16	



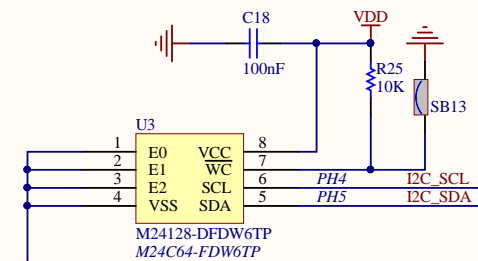
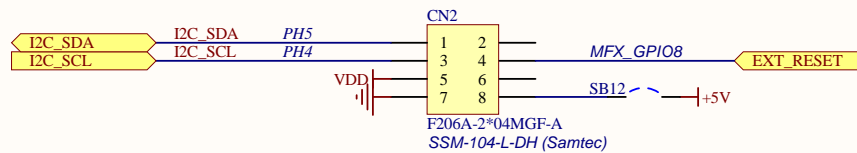
Buttons



LEDs



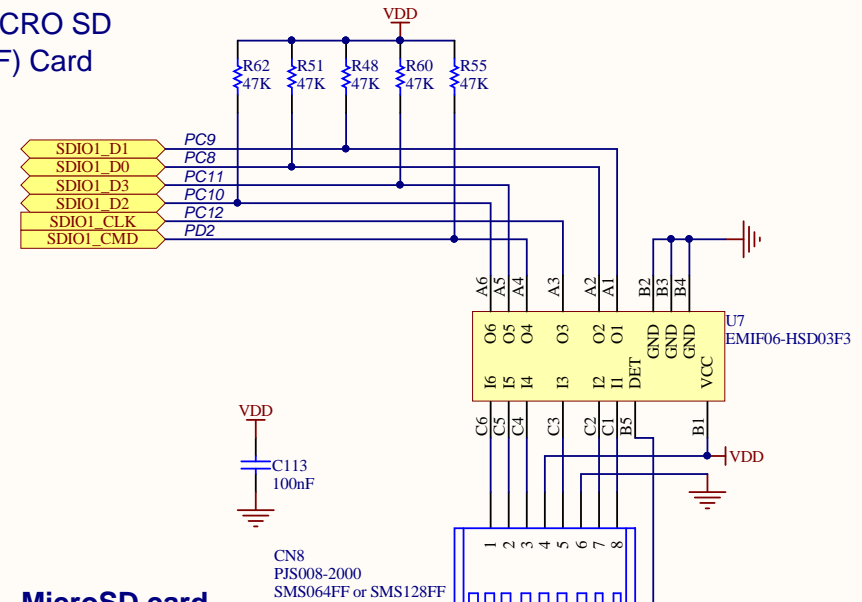
EXT_I2C Connector



I2C EEPROM

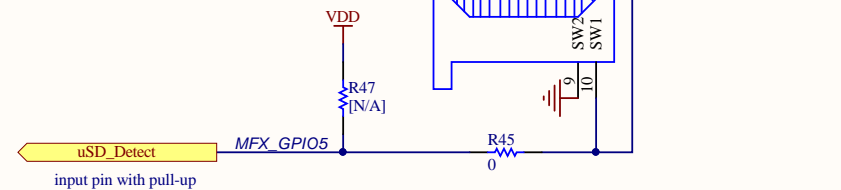
operating voltage ranges:
1MHz 64Kbit I2C memory M24C64-FDW6TP: 1.7 to 5.5V
1MHz 128Kbit I2C memory M24128-FDW6TP: 1.7 to 5.5V

MICRO SD (TF) Card

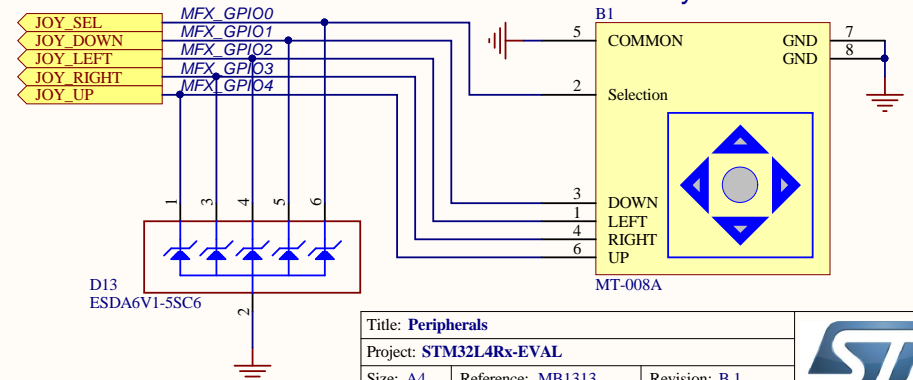


MicroSD card

Operating Voltage: VDD no Lower than 2.7V

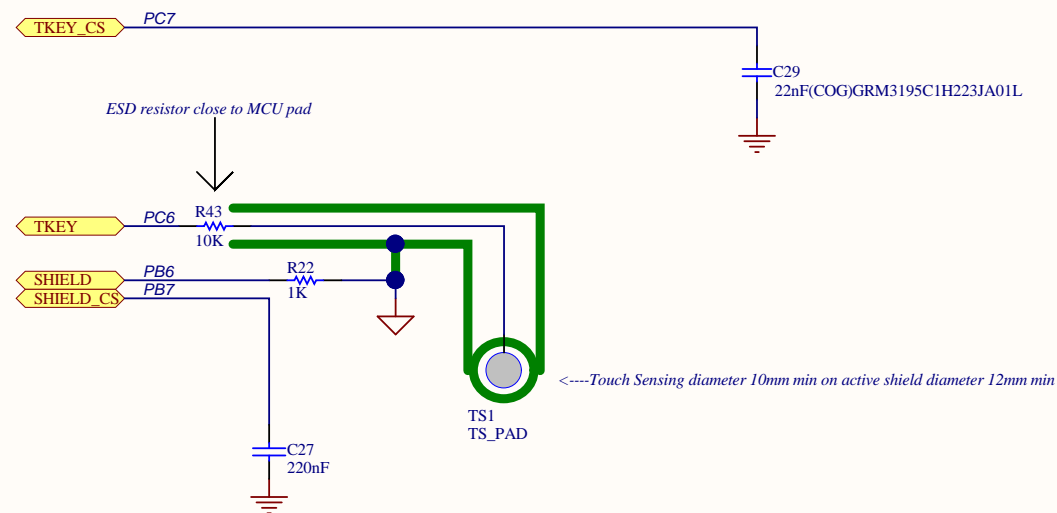
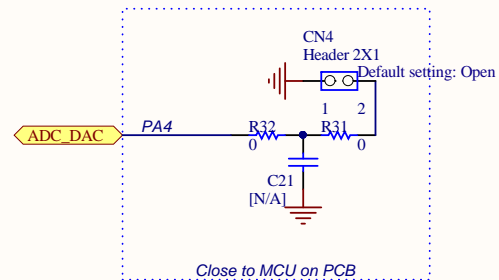
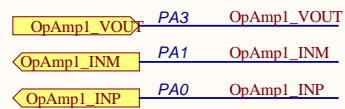



Joystick



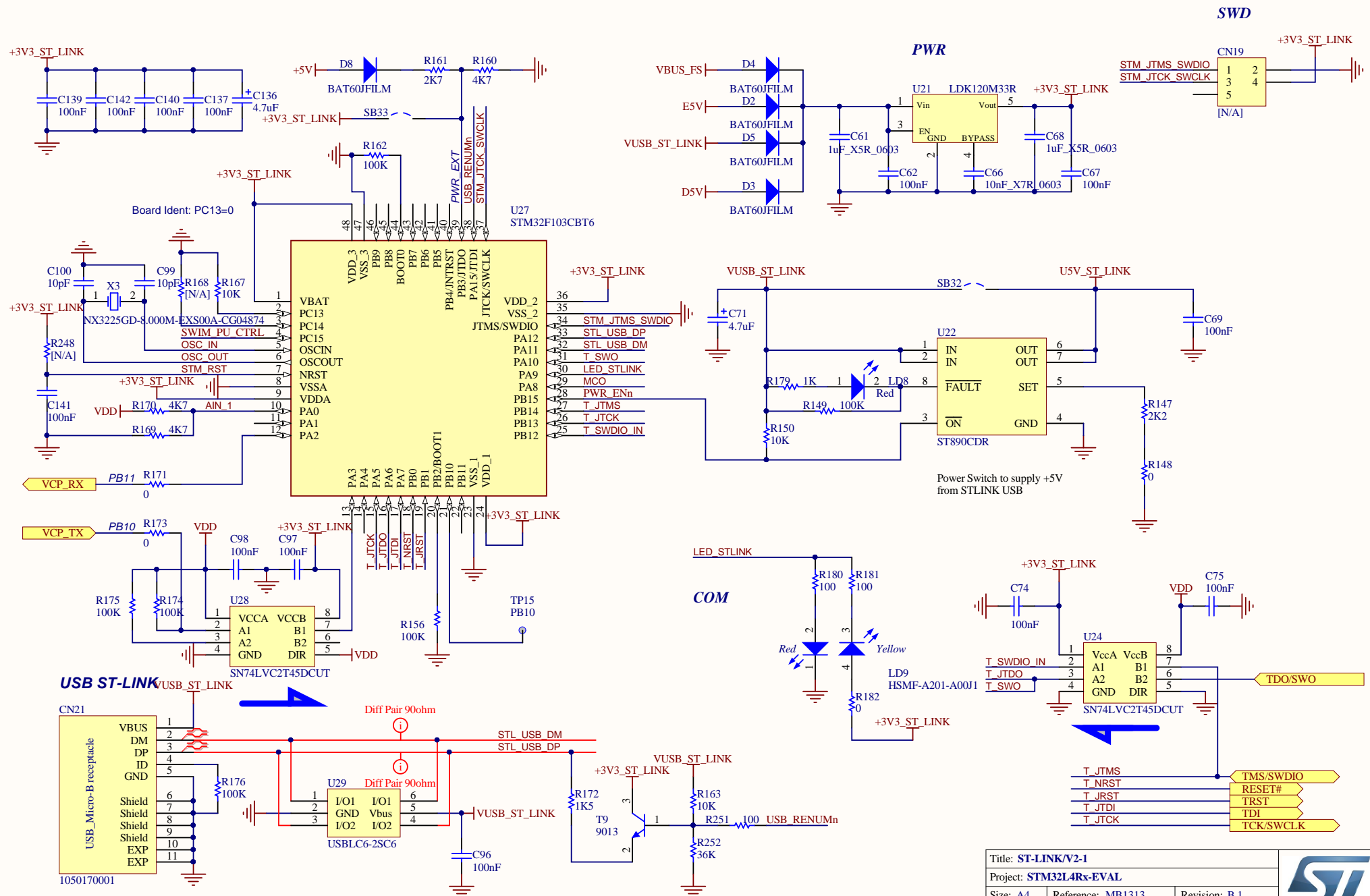
Title: Peripherals		
Project: STM32L4Rx-EVAL		
Size: A4	Reference: MB1313	Revision: B.1
Date: 4/10/2017	Sheet: 7 of 16	

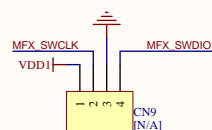


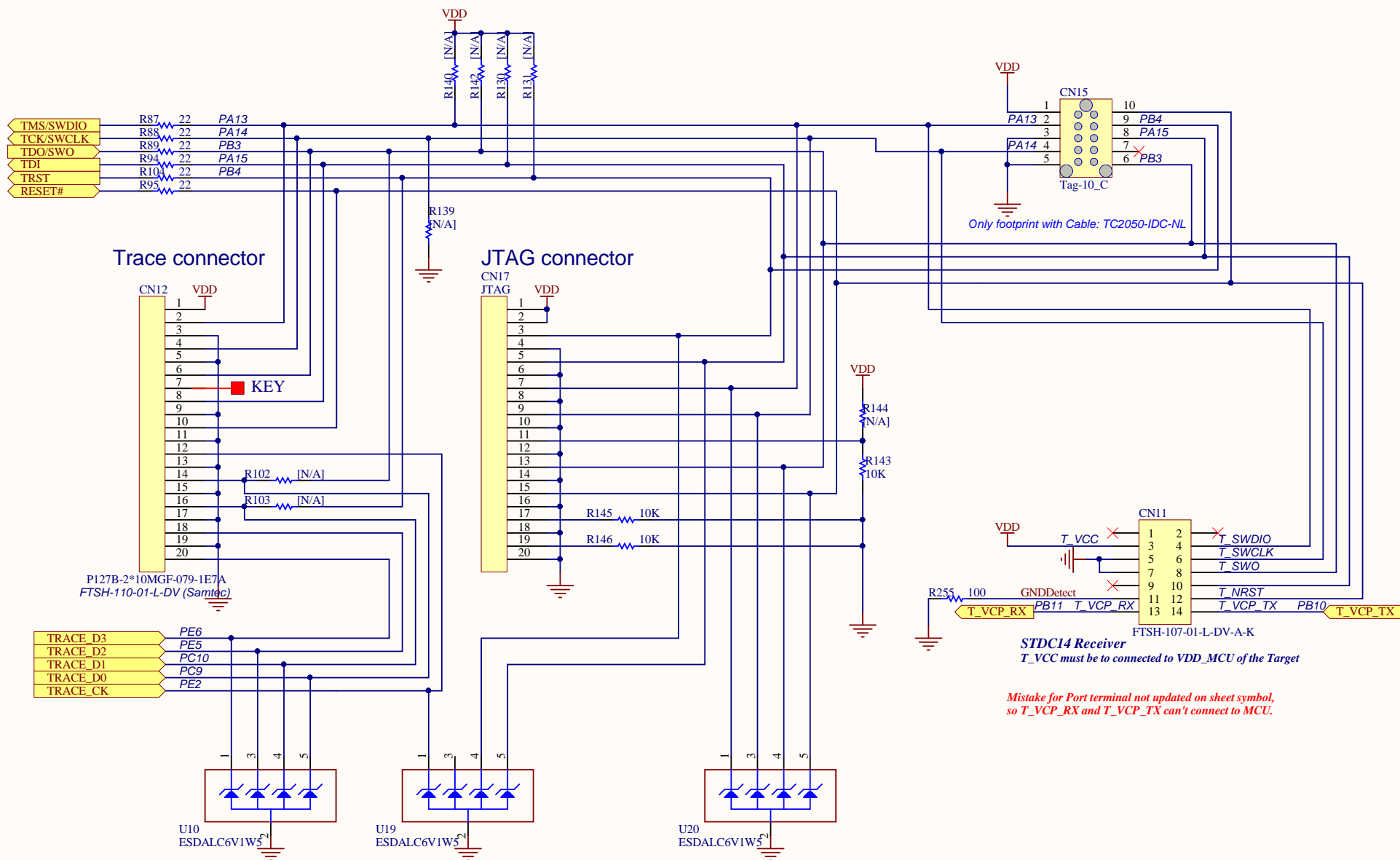


Title: Analog and TS			 life.augmented
Project: STM32L4Rx-EVAL			
Size: A4	Reference: MB1313	Revision: B.1	
Date: 6/5/2017		Sheet: 8 of 16	

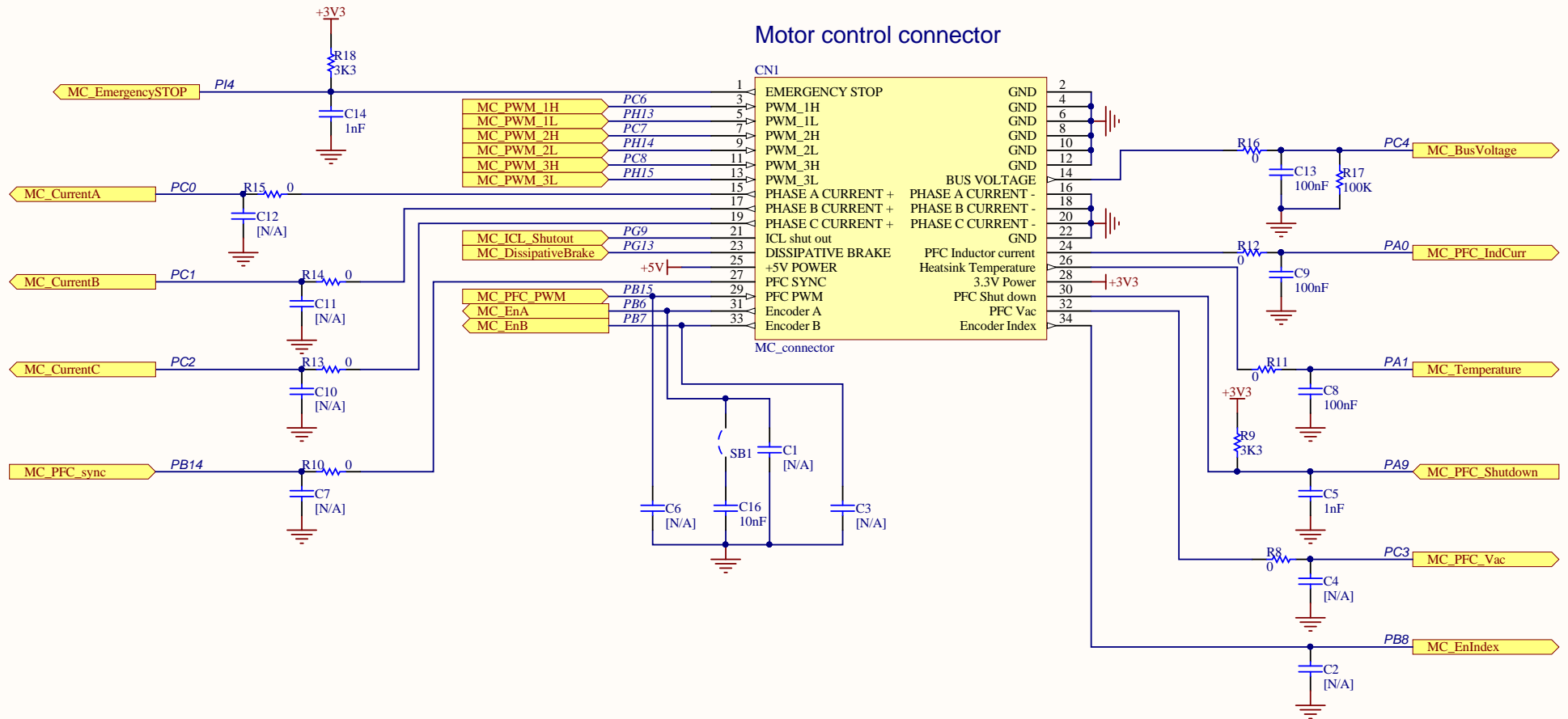


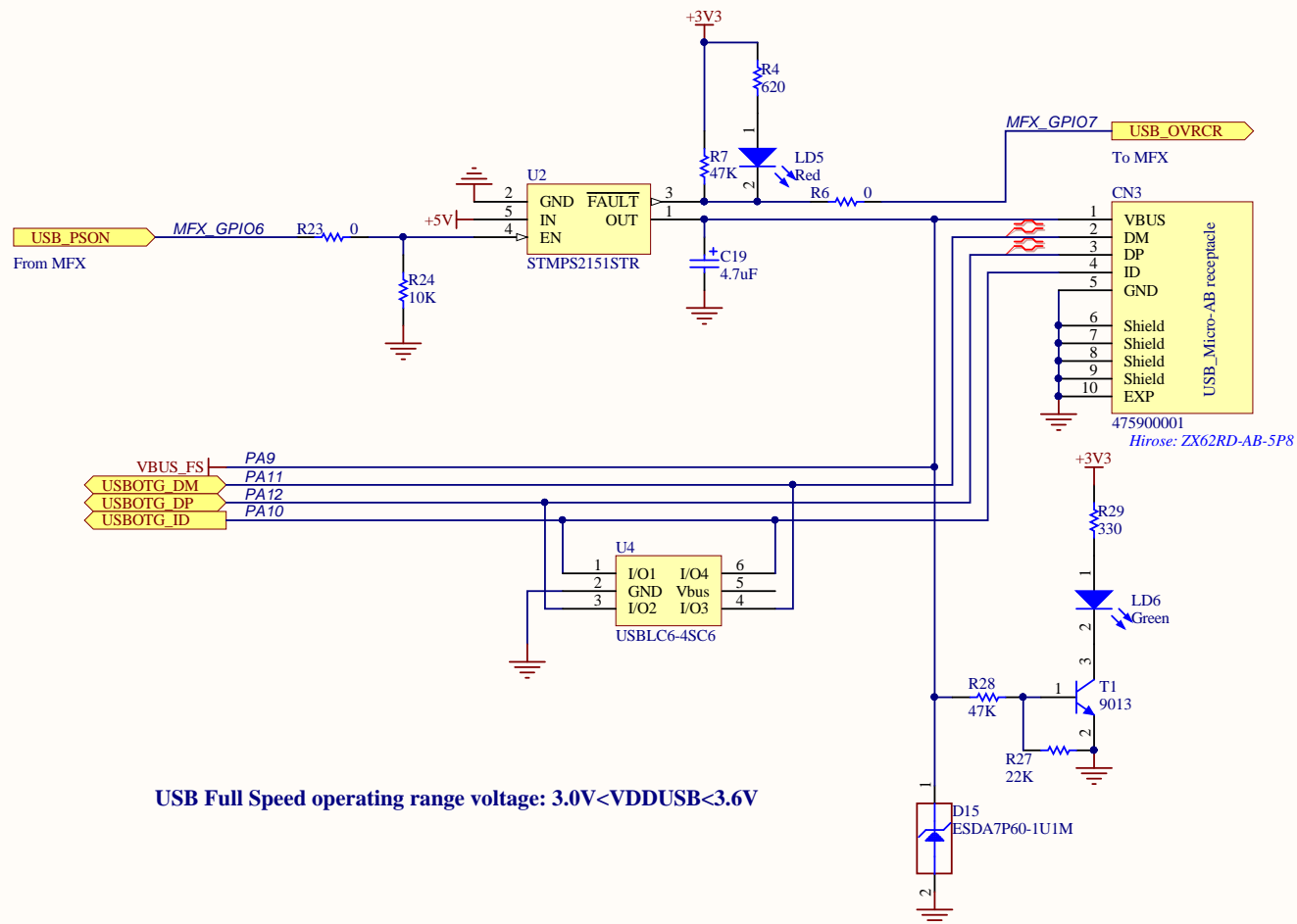




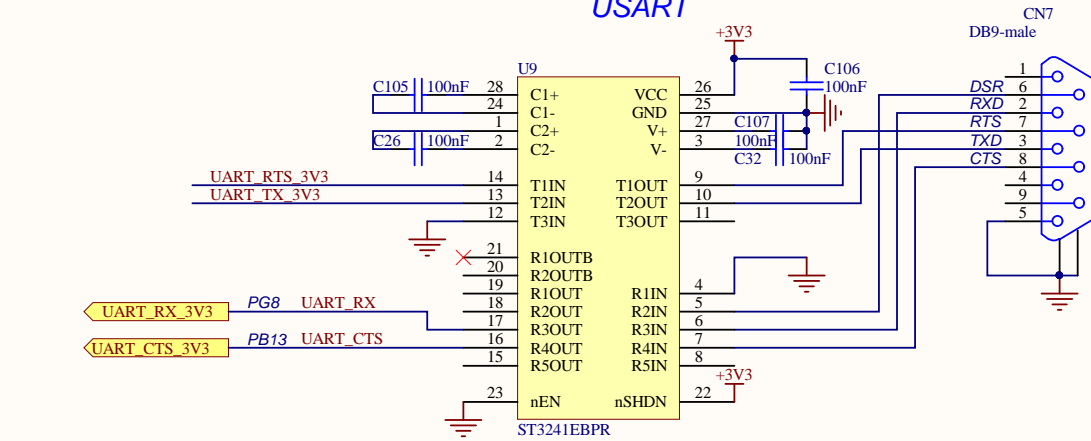


Motor control connector

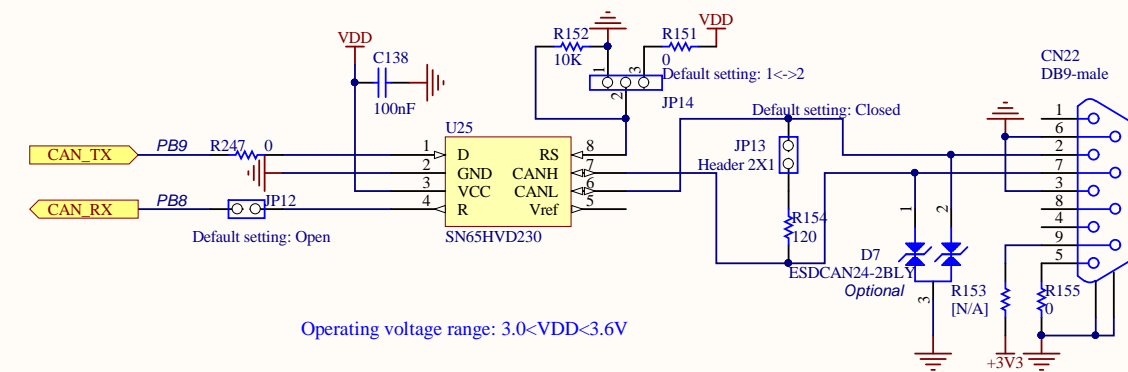
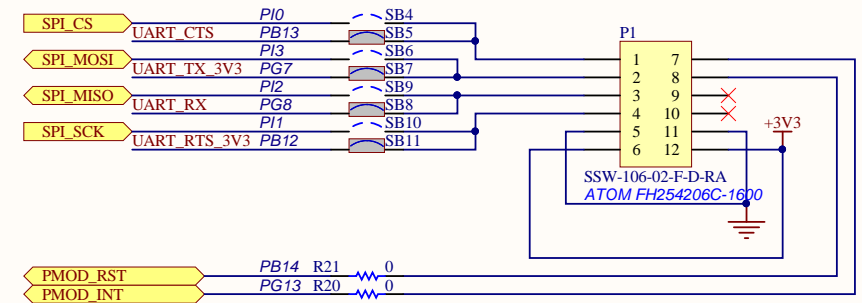




USART



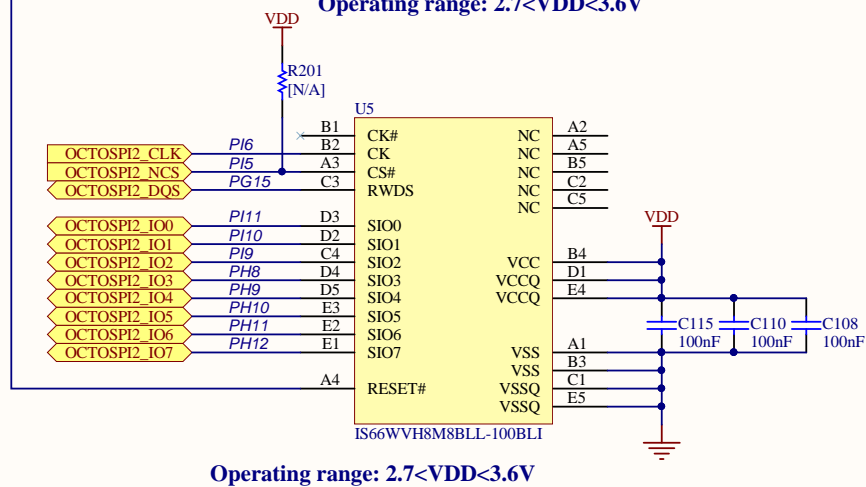
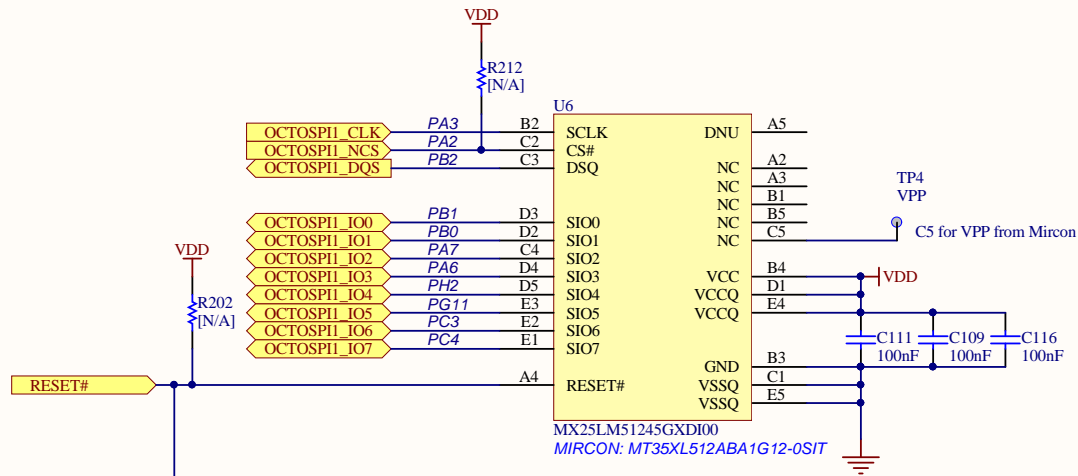
PMOD

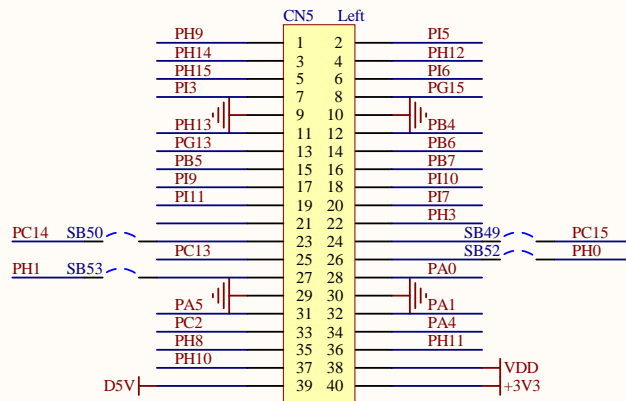


Operating voltage range: 3.0<VDD<3.6V

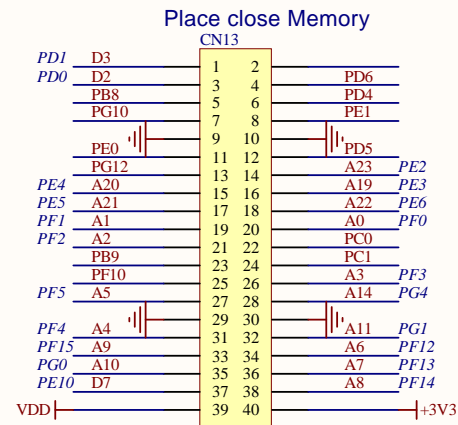
Title: Interface		
Project: STM32L4Rx-EVAL		
Size: A4	Reference: MB1313	Revision: B.1
Date: 7/12/2017	Sheet: 14 of 16	



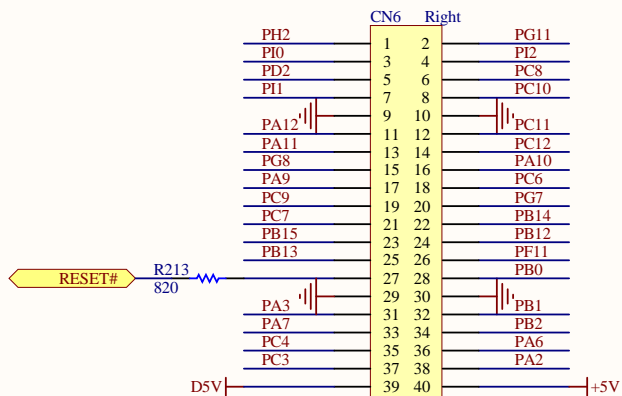
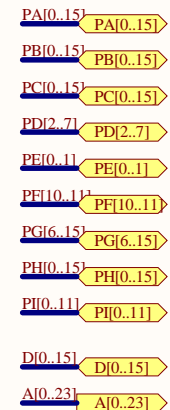




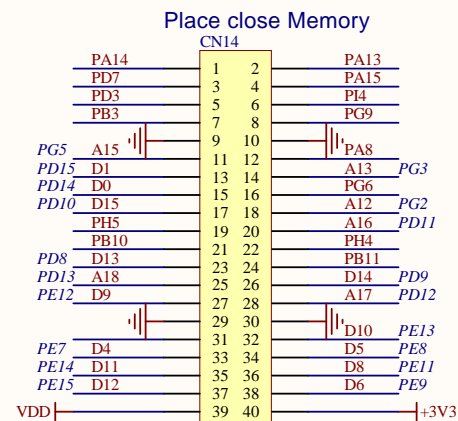
P1039-2*20MGF-089-1A



P1039-2*20MGF-089-1A
FTR-120-03-L-D-LC (Samtec)



P1039-2*20MGF-089-1A



P1039-2*20MGF-089-1A
FTR-120-03-L-D-LC (Samtec)