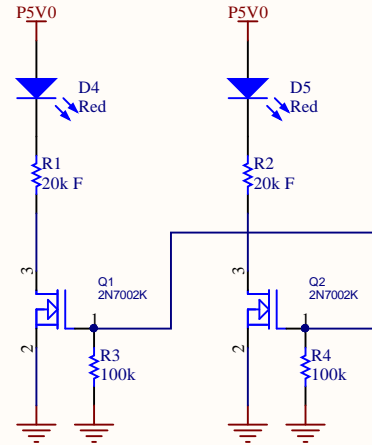
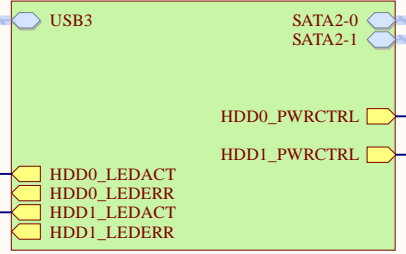


CON_USB3
CON_USB3-AB.SchDoc

CON_FAN
CON_FAN.SchDoc



JMS561
JMS561.SchDoc



HDD_PWR
HDD_PWR_CTRL.SchDoc

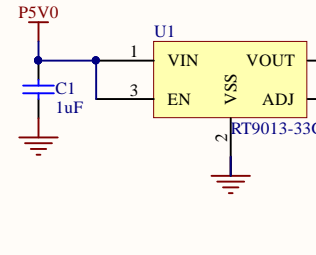
PWR2
PWR_12V_To_5V_MP8762.SchDoc

PWR1
PWR_19V_To_12V_MP2482.SchDoc

CON_SATA2-0
CON_SATA2.SchDoc

CON_SATA2-1
CON_SATA2.SchDoc

CON_DCJACK
CON_DCJACK.SchDoc

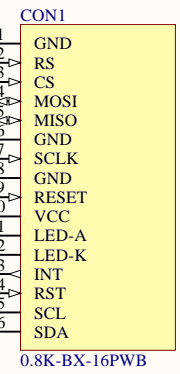


VDD3V3

D1
RB521S30

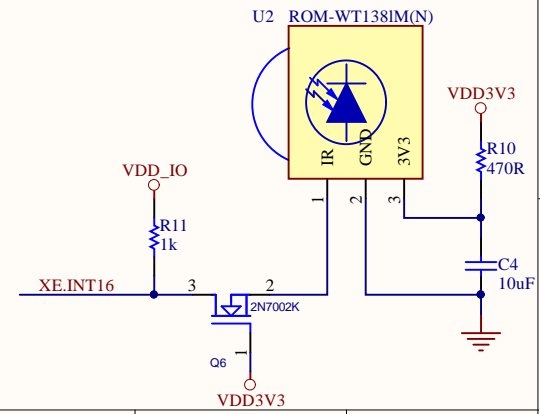
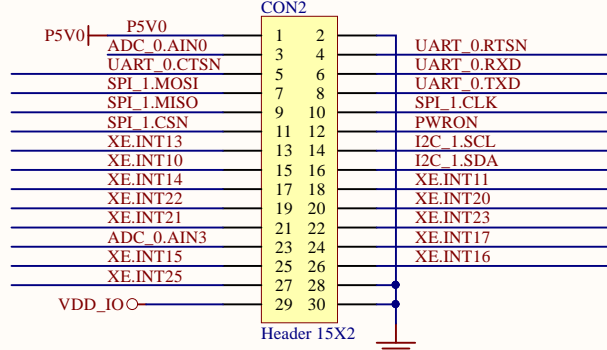
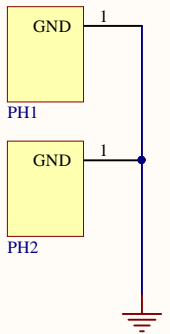
R5
R7
33R

C3
1uF

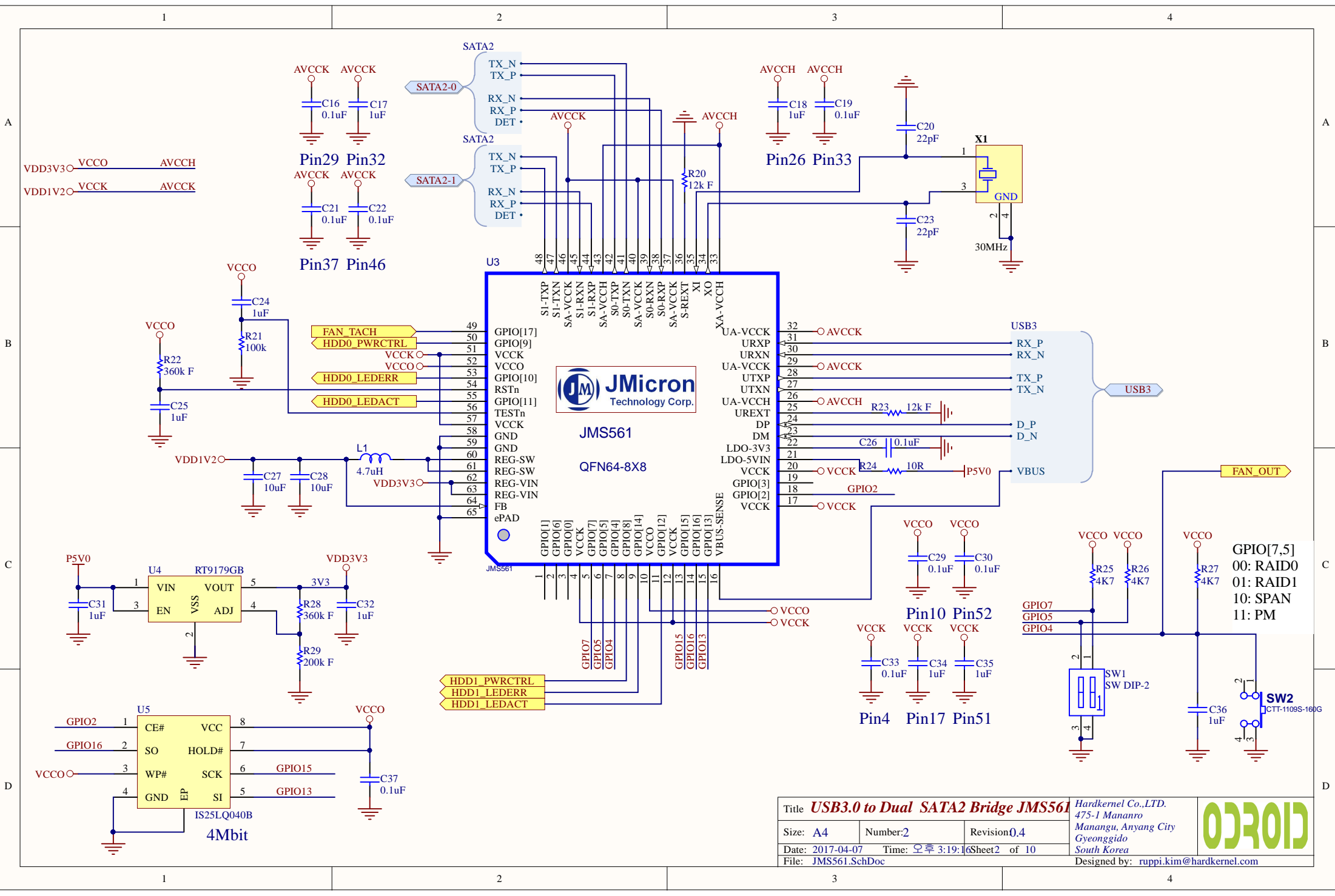



Mounting Holes

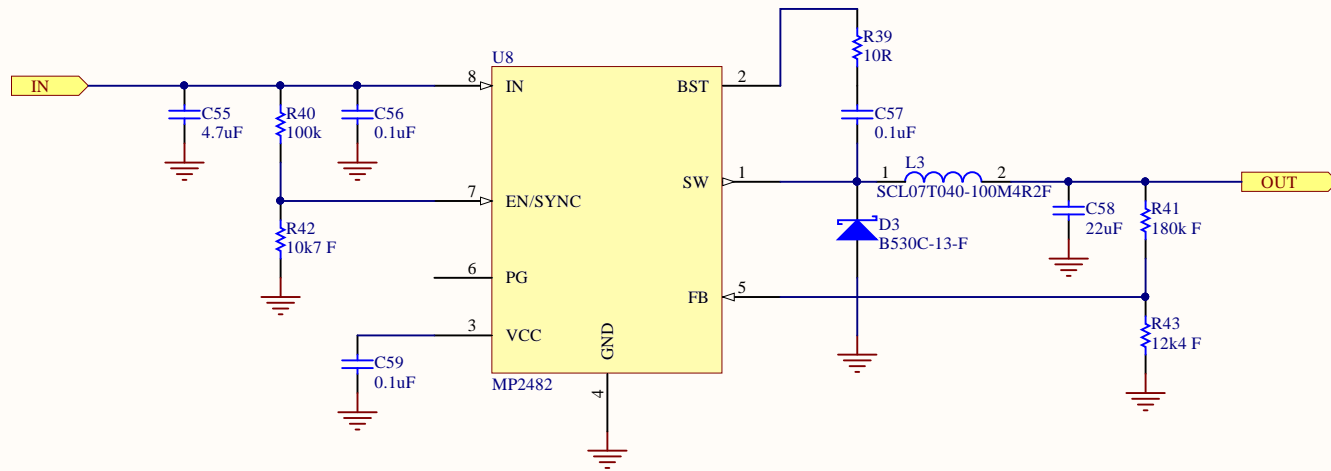
- MH1
 MOUNTING HOLE 3MM
- MH2
 MOUNTING HOLE 3MM
- MH3
 MOUNTING HOLE 3MM
- MH4
 MOUNTING HOLE 3MM




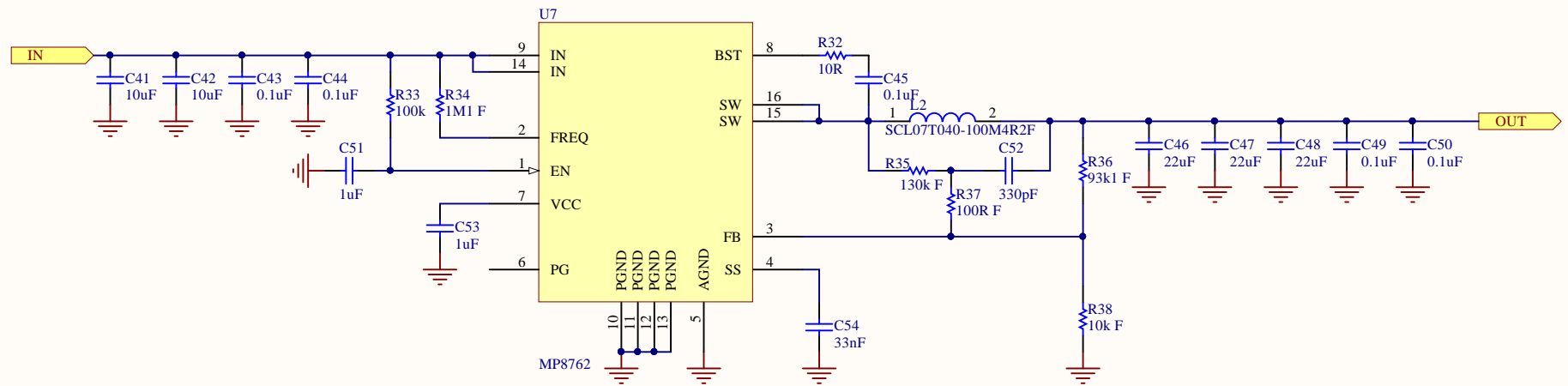
Title CloudShell2 For XU4			Hardkernel Co.,LTD. 475-1 Mananro Manangu, Anyang City Gyeonggido South Korea Designed by: ruppi.kim@hardkernel.com	
Size: A4	Number:1	Revision:0.4		
Date: 2017-04-07	Time: 오후 3:19:16	Sheet 1 of 10		
File: cloudshell2.SchDoc				



Title USB3.0 to Dual SATA2 Bridge JMS561			Hardkernel Co.,LTD. 475-1 Mananro Manangu, Anyang City Gyeonggido South Korea
Size: A4	Number:2	Revision:0.4	
Date: 2017-04-07	Time: 오후 3:19:16	Sheet 2 of 10	
File: JMS561.SchDoc	Designed by: ruppi.kim@hardkernel.com		

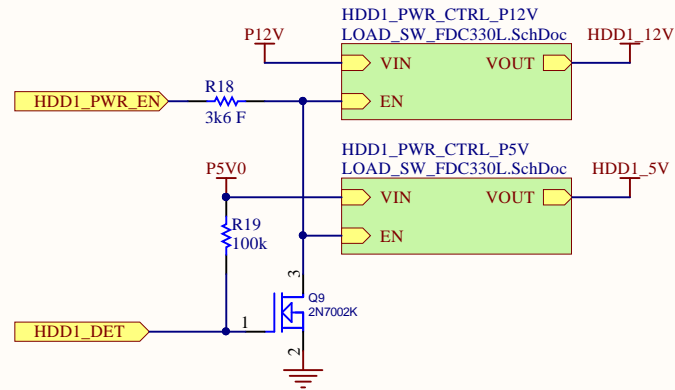
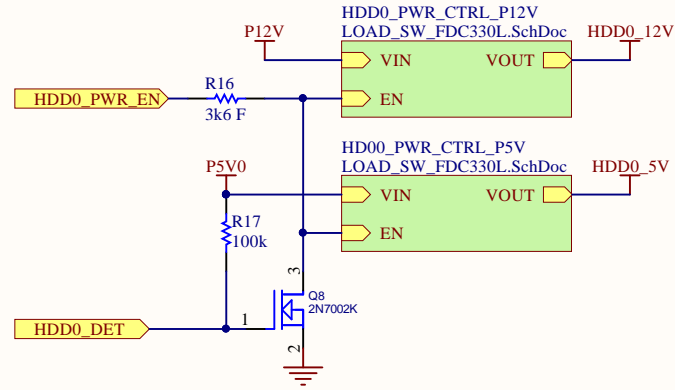



Title 19V to 12V MP2482			Hardkernel Co.,LTD. 475-1 Mananro Manangu, Anyang City Gyeonggido South Korea	
Size: A4	Number:3	Revision:0.4		
Date: 2017-04-07	Time: 오후 3:19:16	Sheet 3 of 10	Designed by: ruppi.kim@hardkernel.com	
File: PWR_19V_To_12V_MP2482.SchDoc				

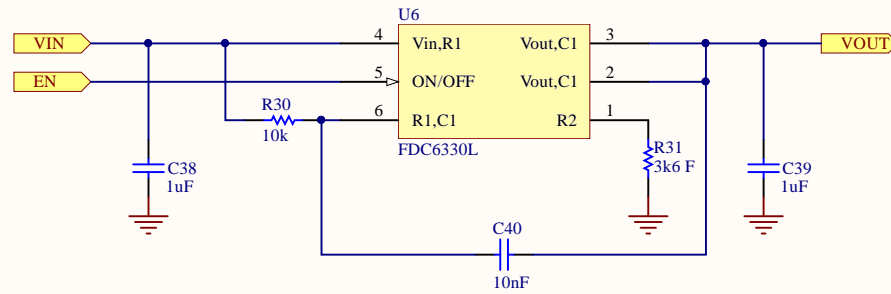



Title MP8762		Hardkernel Co.,LTD. 475-1 Mananro Manangu, Anyang City Gyeonggido South Korea	
Size: A4	Number:4	Revision:0.4	
Date: 2017-04-07	Time: 오후 3:19:16	Sheet4 of 10	
File: PWR_12V_To_5V_MP8762.SchDoc		Designed by: ruppi.kim@hardkernel.com	

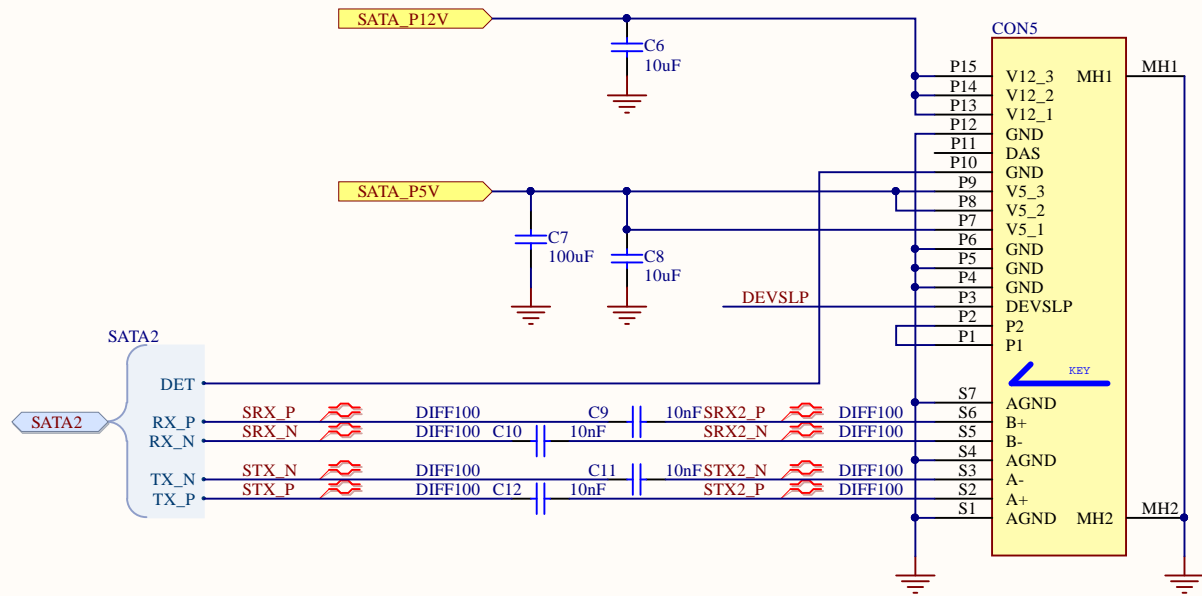





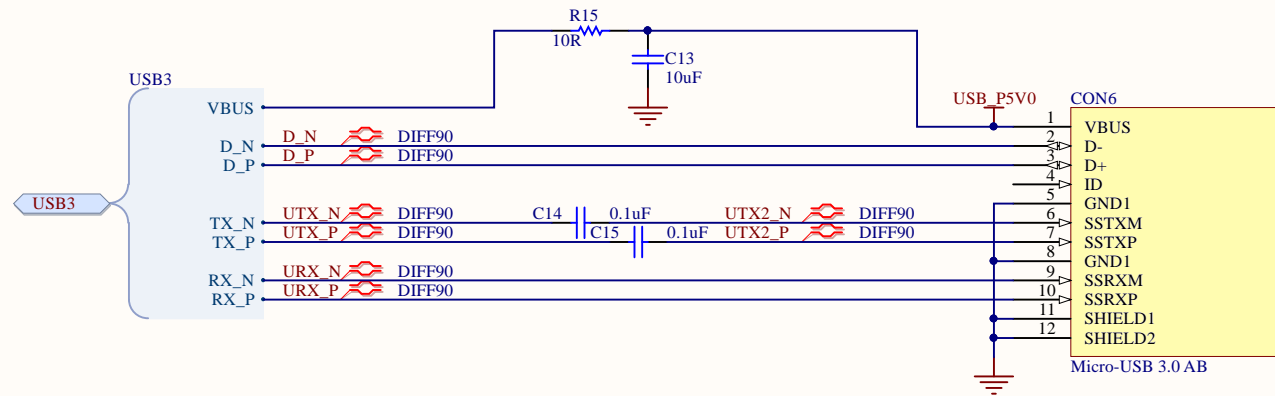
Title LOAD SW FDC330L			<i>Hardkernel Co.,LTD.</i> 704 Anyang K-center 1591-9 Manangu, Anyang City Gyeonggido South Korea Designed by: ruppi.kim@hardkernel.com	
Size: A4	Number:5	Revision:0.4		
Date: 2017-04-07	Time: 오후 3:19:16	Sheet5 of 10		
File: HDD_PWR_CTRL.SchDoc				



Title LOAD SW FDC330L			<i>Hardkernel Co.,LTD.</i> 704 Anyang K-center 1591-9 Manangu, Anyang City Gyeonggido South Korea Designed by: ruppi.kim@hardkernel.com	
Size: A4	Number:6	Revision:0.4		
Date: 2017-04-07	Time: 오후 3:19:16 Sheet 6 of 10			
File: LOAD_SW_FDC330L.SchDoc				



Title SATA2 Connector			Hardkernel Co.,LTD. 704 Anyang K-center 1591-9 Manangu, Anyang City Gyeonggido South Korea Designed by: ruppi.kim@hardkernel.com	
Size: A4	Number:7	Revision:0.4		
Date: 2017-04-07	Time: 오후 3:19:16	Sheet 7 of 10		
File: CON_SATA2.SchDoc				



Title USB3.0 to Dual SATA2 Bridge JMS561		Hardkernel Co.,LTD. 704 Anyang K-center 1591-9 Burim, Dongangu, Anyang Gyeonggido South Korea	
Size: A4	Number:8	Revision:0.4	
Date: 2017-04-07	Time: 오후 3:19:16	Sheet 8 of 10	
File: CON_USB3-AB.SchDoc		Designed by: ruppi.kim@hardkernel.com	

1

2

3

4

A

A

B

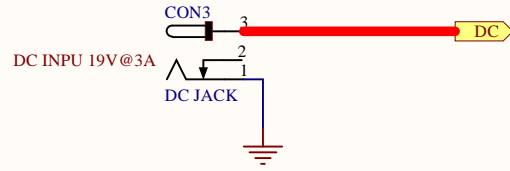
B


C

C

D

D



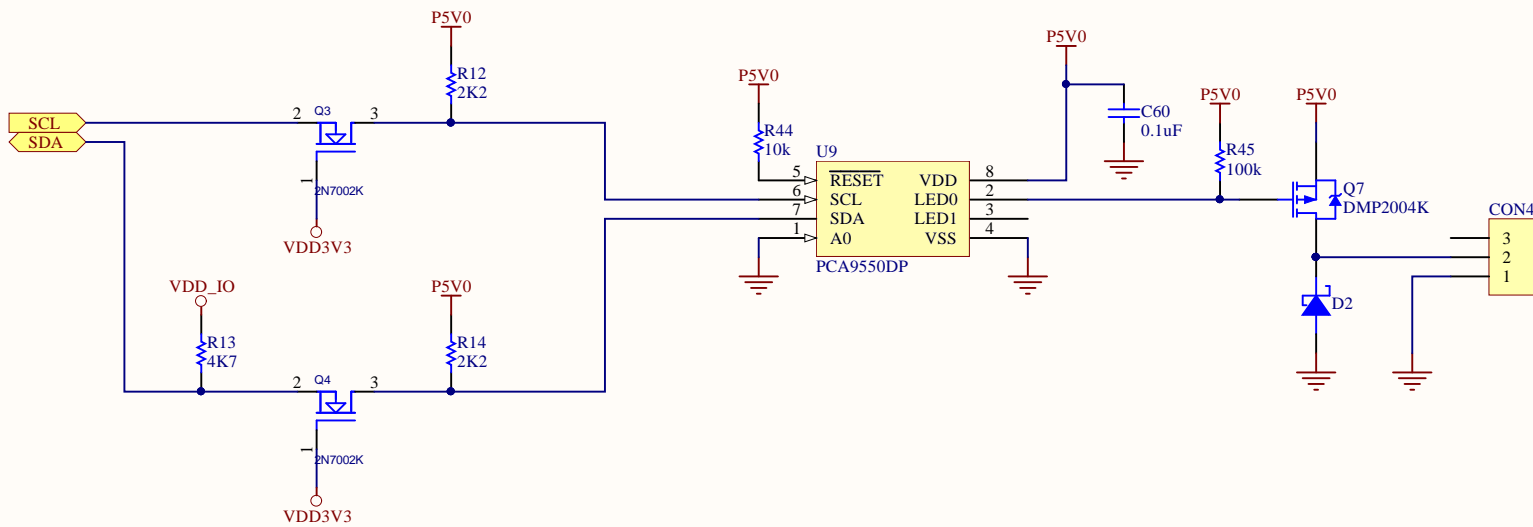
Title DC Jack			<i>Hardkernel Co.,LTD.</i> 475-1 Mananro Manangu, Anyang City Gyeonggido South Korea Designed by: ruppi.kim@hardkernel.com	
Size: A4	Number:9	Revision:0,4		
Date: 2017-04-07	Time: 오후 3:19:16	Sheet9 of 10		
File: CON_DCJACK.SchDoc				


1

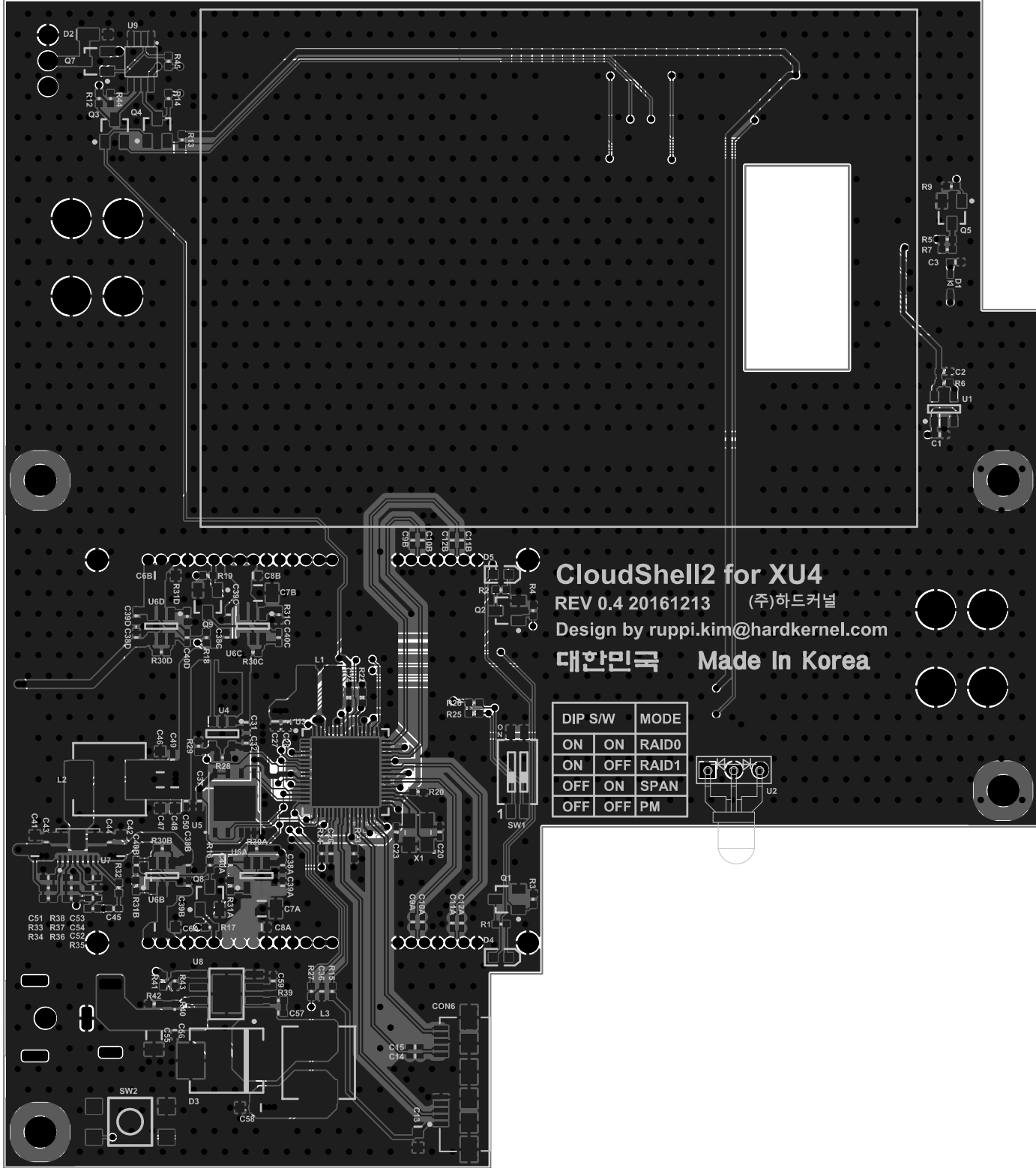
2

3

4

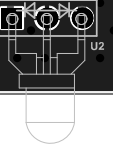


Title CON_FAN			Hardkernel Co.,LTD. 475-1 Mananro Manangu, Anyang City Gyeonggido South Korea Designed by: ruppi.kim@hardkernel.com	
Size: A4	Number:10	Revision:0,4		
Date: 2017-04-07	Time: 오후 3:19:16	Sheet 10 of 10		
File: CON_FAN.SchDoc				



CloudShell2 for XU4
 REV 0.4 20161213 (주)하드커널
 Design by ruppi.kim@hardkernel.com
 대한민국 Made In Korea

DIP S/W	MODE	
ON ON	RAID0	
ON OFF	RAID1	
OFF ON	SPAN	
OFF OFF	PM	



- C51 R38 C53
- R33 R37 C54
- R34 R36 C52
- R35