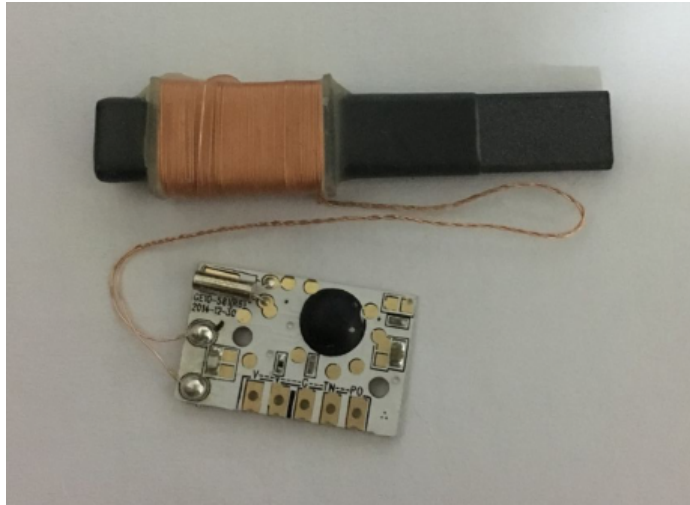


Radio Controlled Clock
Receiver DCF Module GE10-581



1. FEATURES

- . 高灵敏度 Very high sensitivity
- . 电源可控 power down mode available
- . 低功耗 low power consumption
- . 工作电压范围 operating supply voltage range: 1.2 to 5.0V
- . 工作电流 70uA—90uA 静态电流 1uA—3uA

2. SPECIFICATION

DCF 77.5KHZ (德国 DCF):

灵敏度 Sensitivity: $30\mu\text{V} \pm 5\mu\text{V}$

Antenna size (天线尺寸): 3X8X50 mm

