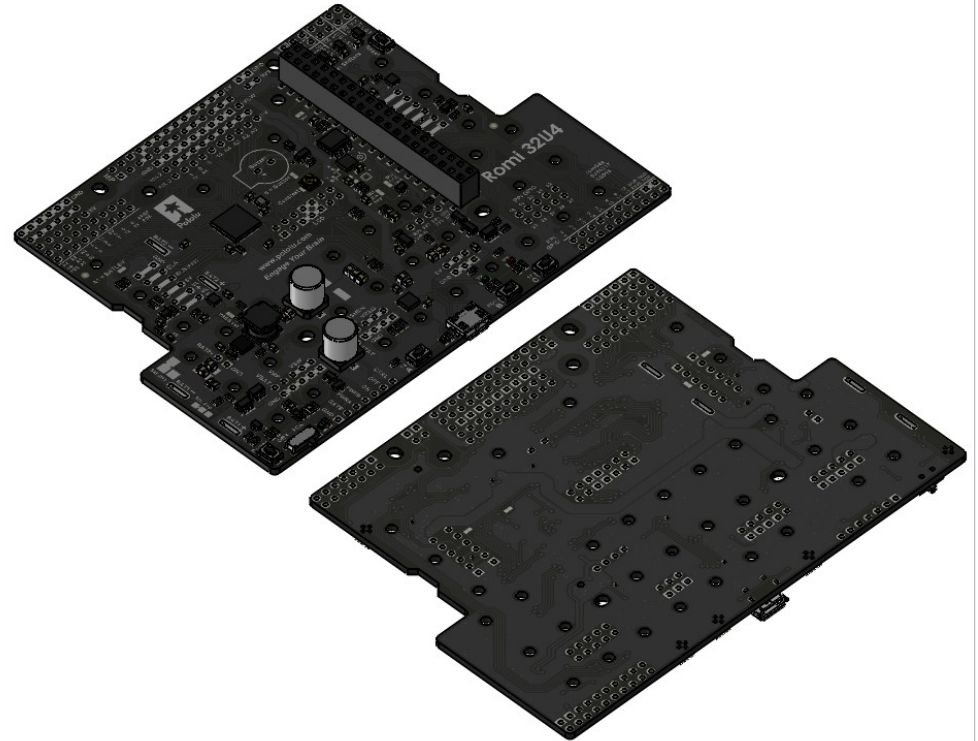
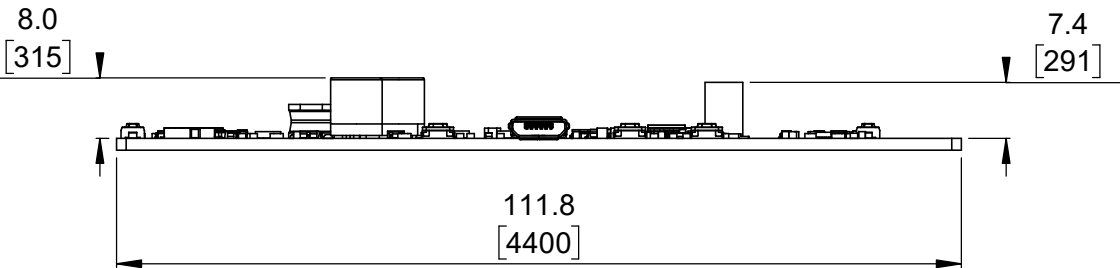


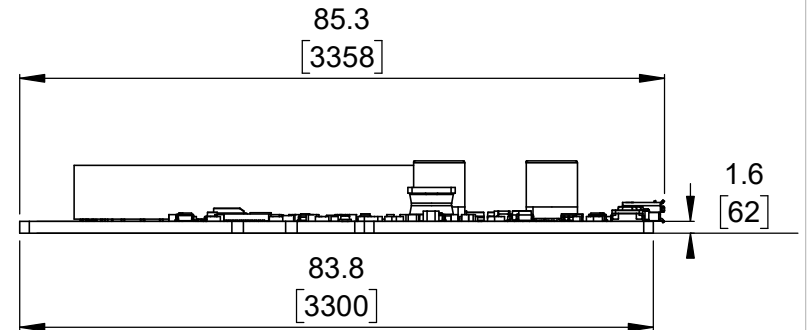
① Top view (actual size)  
Scale 1:1



② Isometric view  
Scale 2:3



③ Long profile  
Scale 1:1

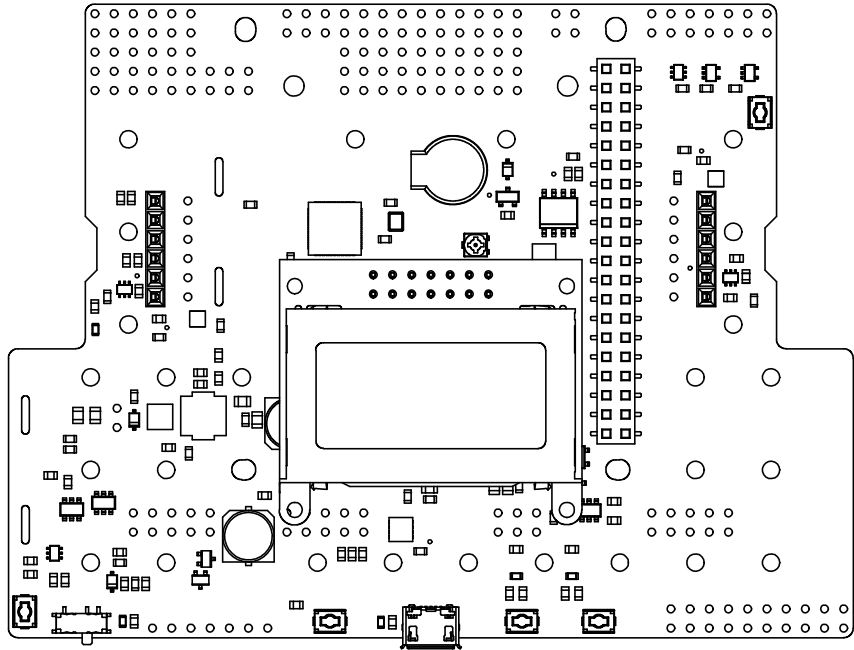


④ Short profile  
Scale 1:1

1. To get the specified scale, select 100% in print settings.
2. Drill location tolerance:  $\pm 0.1$  [ $\pm 5$ ].
3. Board edge tolerance:  $\pm 0.3$  [ $\pm 10$ ].

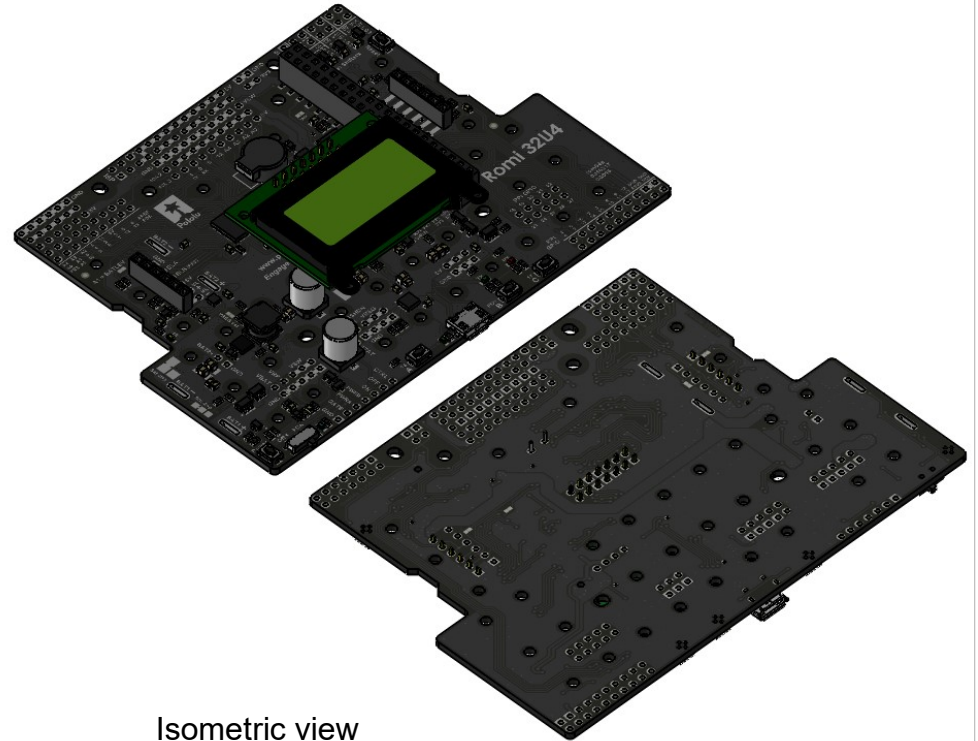
<https://www.pololu.com/product/3544>

Name: <b>Romi 32U4 Control Board</b>		Item number: <b>3544</b>
Drawing date: <b>7 February 2017</b>		
Units: mm [mil]	PCB dev code: <b>rom04a</b>	 © 2017 Pololu Corporation



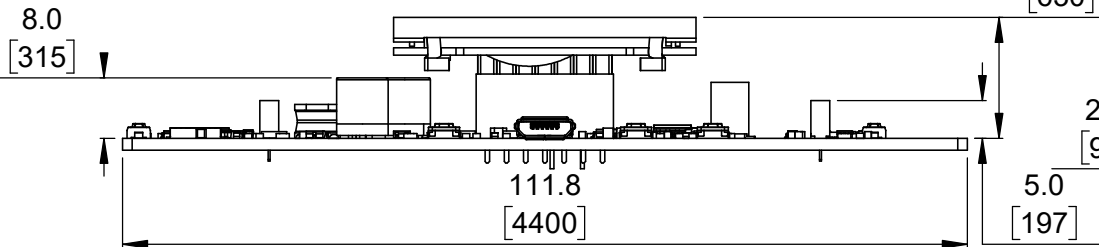
Top view (actual size)  
(with optional through-hole components and LCD)

① Scale 1:1



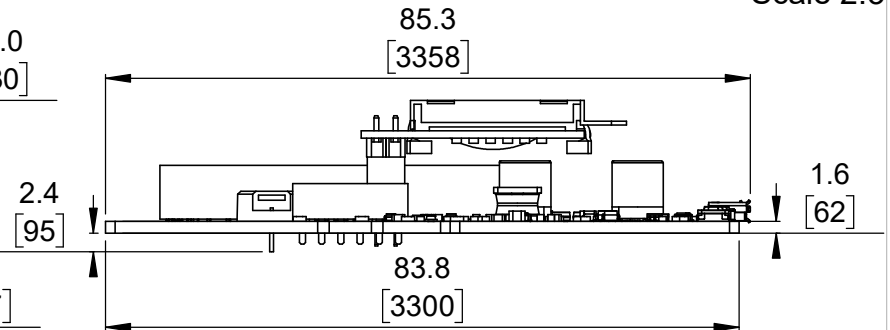
Isometric view  
(with optional through-hole components and LCD)

② Scale 2:3



Long profile  
(with optional through-hole components and LCD)

③ Scale 1:1



Short profile  
(with optional through-hole components and LCD)

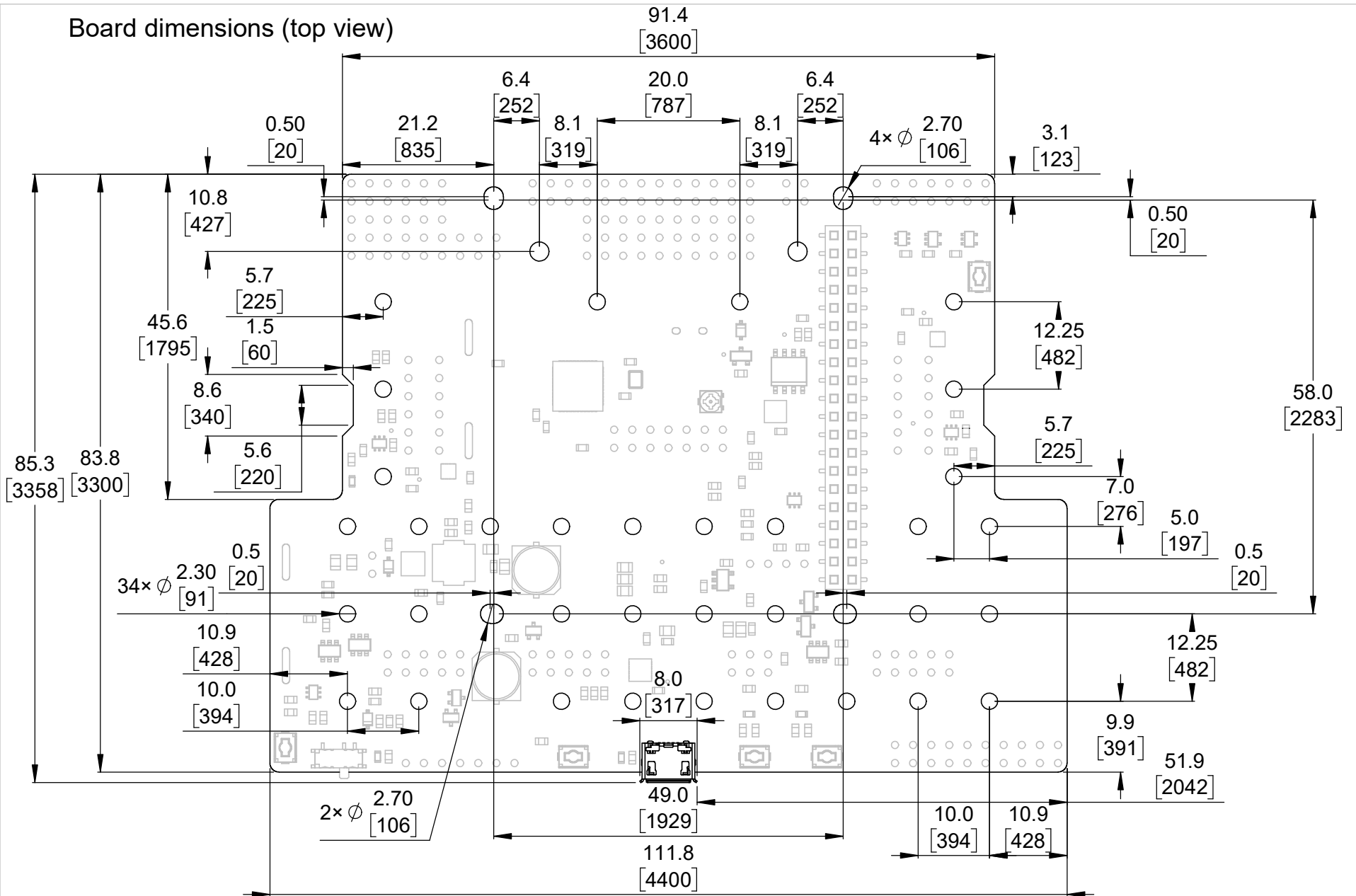
④ Scale 1:1

1. To get the specified scale, select 100% in print settings.
2. Drill location tolerance:  $\pm 0.1$  [ $\pm 5$ ].
3. Board edge tolerance:  $\pm 0.3$  [ $\pm 10$ ].

<https://www.pololu.com/product/3544>

Name: <b>Romi 32U4 Control Board</b>		Item number: <b>3544</b>
Drawing date: <b>7 February 2017</b>		
Units: mm [mil]	PCB dev code: <b>rom04a</b>	 <b>Pololu</b> Robotics & Electronics © 2017 Pololu Corporation

# Board dimensions (top view)



- To get the specified scale, select 100% in print settings.
- Drill location tolerance:  $\pm 0.1$  [ $\pm 5$ ].
- Board edge tolerance:  $\pm 0.3$  [ $\pm 10$ ].

Scale: 4:3

<https://www.pololu.com/product/3544>

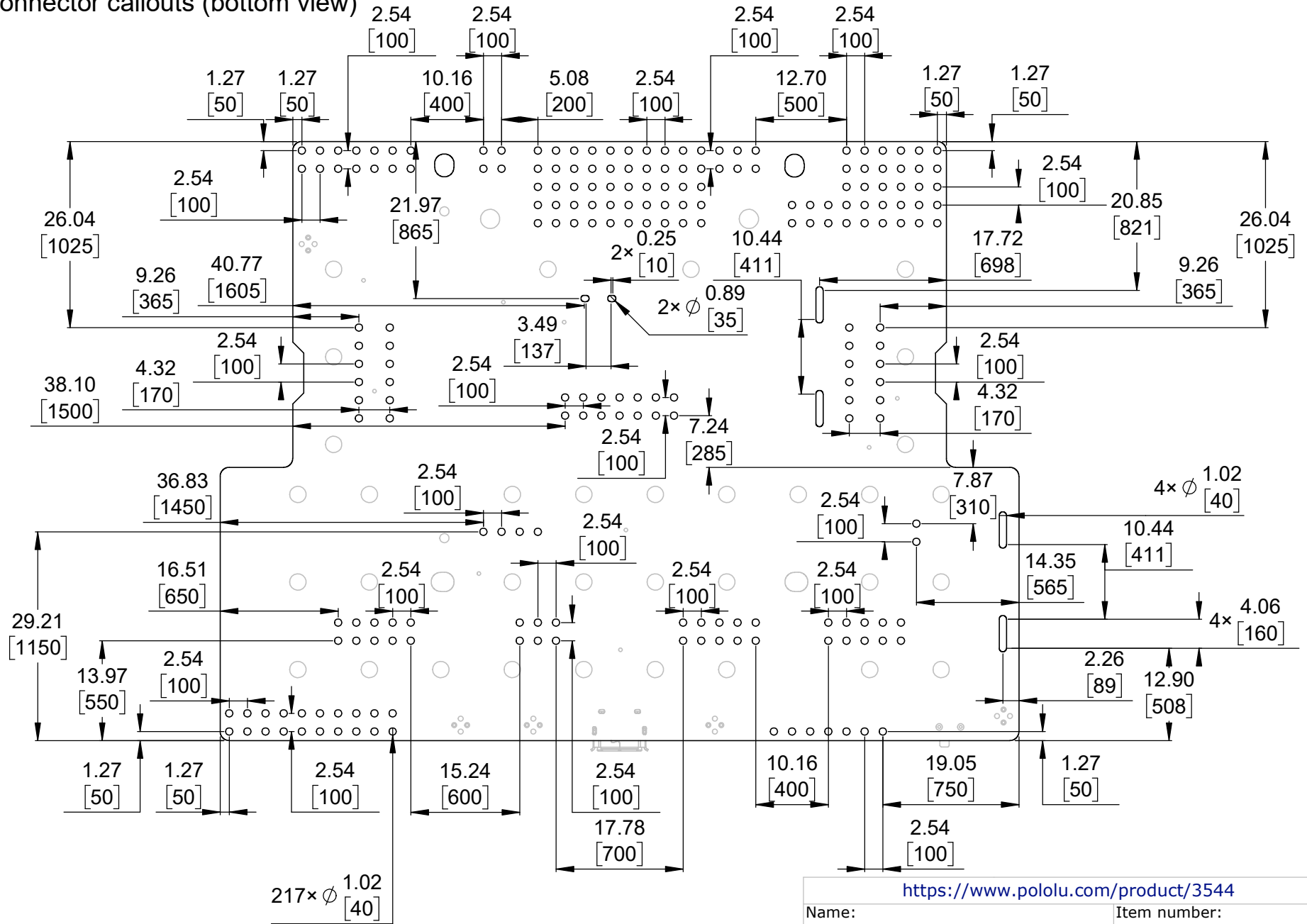
Name: Romi 32U4 Control Board  
Item number: 3544

Drawing date: 7 February 2017

Units: mm [mil]  
PCB dev code: rom04a



# Connector callouts (bottom view)



1. To get the specified scale, select 100% in print settings.
2. Drill location tolerance:  $\pm 0.1$  [ $\pm 5$ ].
3. Board edge tolerance:  $\pm 0.3$  [ $\pm 10$ ].

Scale: 4:3

<https://www.pololu.com/product/3544>

Name: <b>Romi 32U4 Control Board</b>		Item number: <b>3544</b>
Drawing date: <b>7 February 2017</b>		
Units: mm [mil]	PCB dev code: <b>rom04a</b>	
		© 2017 Pololu Corporation