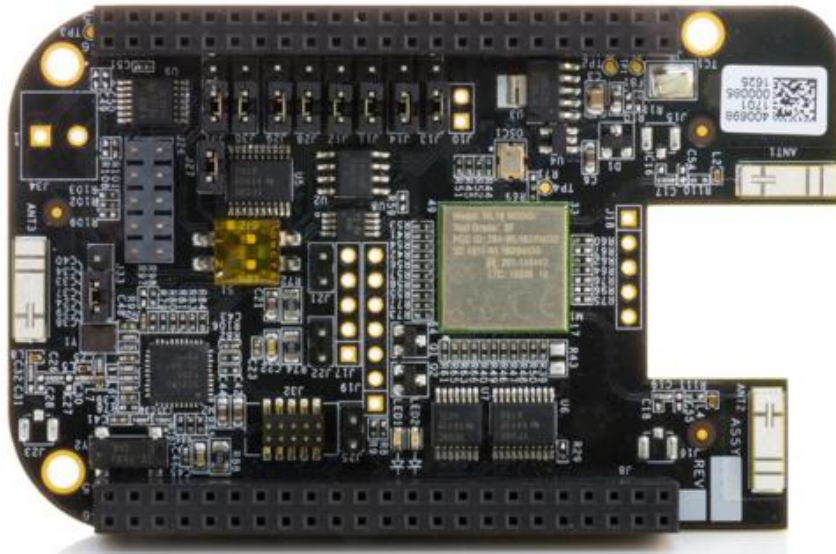


README file for BBONE-GATEWAY-CAPE

(Firmware image support for use with Wireless Connectivity Cape)



BeagleBone Black firmware compatibility

This cape product is intended to be used with a BeagleBone Black host board. Support for use with other compatible BeagleBoard variants will be provided at a later time.

Please ensure your BeagleBone Black is using the latest supported firmware image – available at: <https://beagleboard.org/latest-images>. Instructions for imaging your BeagleBone Black are provide at the end of this document – section **BeagleBone Black firmware imaging instructions**

Follow the Instruction Steps detailed below to fully enable use of your Wireless Connectivity Cape.

Instruction Steps to configure & use Wireless Connectivity Cape with BeagleBone Black:

1. Boot the BeagleBone Black without the Wireless Connectivity Cape attached.
2. Launch a terminal window connection.
 - Run an SSH Client (e.g., PuTTY) over USB. Connect using IP address: 192.168.7.2 (Port 22). (Username of **root** with no password.)
 - 3-wire Serial Port (J5) connection with terminal settings 115200, 8, 1.

3. Edit /boot/uEnv.txt

- `$> sudo nano /boot/uEnv.txt`
- **# Enable the overlay dtb (eMMC/hdmi/etc are disabled)**
`dtb=am335x-boneblack-overlay.dtb`
- **# Enable the gateway/connectivity cape overlay:**
`cape_enable=bone_capemgr.enable_partno=BB-BONE-WL183`
- **Write out & save edits.**

4. Shutdown. Attach the Wireless Connectivity Cape to the BeagleBone Black and re-boot.

5. Again, launch and open up a terminal window session (as described above).

6. Issue the following commands to establish WiFi connection:

```
$> sudo connmanctl

#connmanctl
#connmanctl> tether wifi disable
#connmanctl> enable wifi
#connmanctl> scan wifi
#connmanctl> services
#connmanctl> agent on
#connmanctl> connect wifi_*_managed_psk
#connmanctl> quit
```

Release Notes:

The directive of this README document may be *temporary only*. The intention is to provision and release an official beagleboard.org supported firmware image that will more fully and more automatically configure and support the Wireless Connectivity Cape. At a future date, the contents of this README may become obsolete.

BeagleBone Black firmware imaging instructions

Firmware imaging instructions are provided by beagleboard.org at the following link:

<https://beagleboard.org/getting-started>

- Scroll down to the section that begins, “**Update board with latest software**”
- Complete steps #1 thru #8.

PN: **BBONE-GATEWAY-CAPE**

element14

The element14 Wireless Connectivity Cape is manufactured in PRC by Premier Farnell UK Limited,
150 Armley Road, Leeds, LS12 2QQ, United Kingdom
www.premierfarnell.com