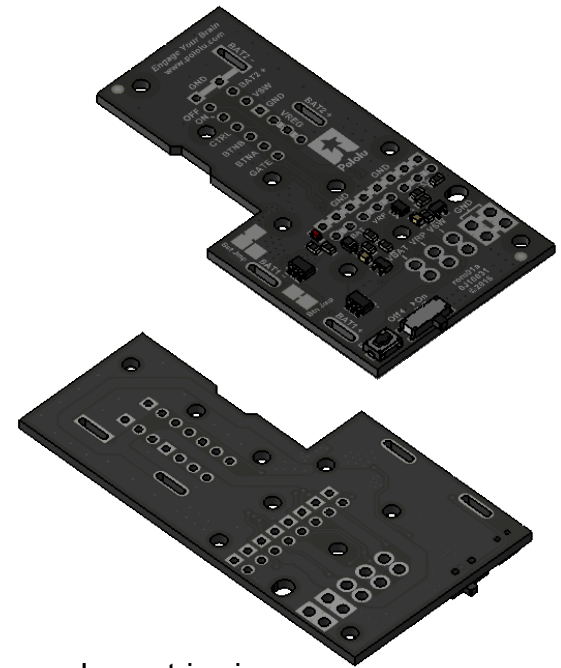
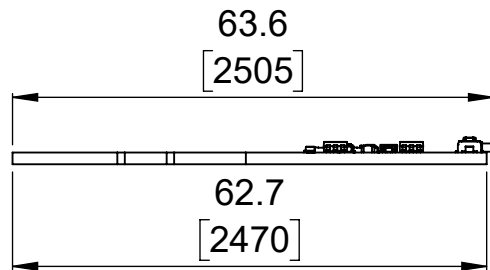


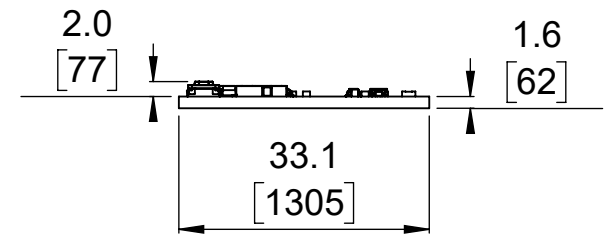
① Top view (actual size)
Scale 1:1



② Isometric view
Scale 1:1



③ Long profile
Scale 1:1



④ Short profile
Scale 1:1

1. To get the specified scale, select 100% in print settings.
2. Drill location tolerance: ± 0.1 [± 5].
3. Board edge tolerance: ± 0.3 [± 10].

<https://www.pololu.com/product/3541>

Name: Power Distribution Board for Romi Chassis

Item number:
3541

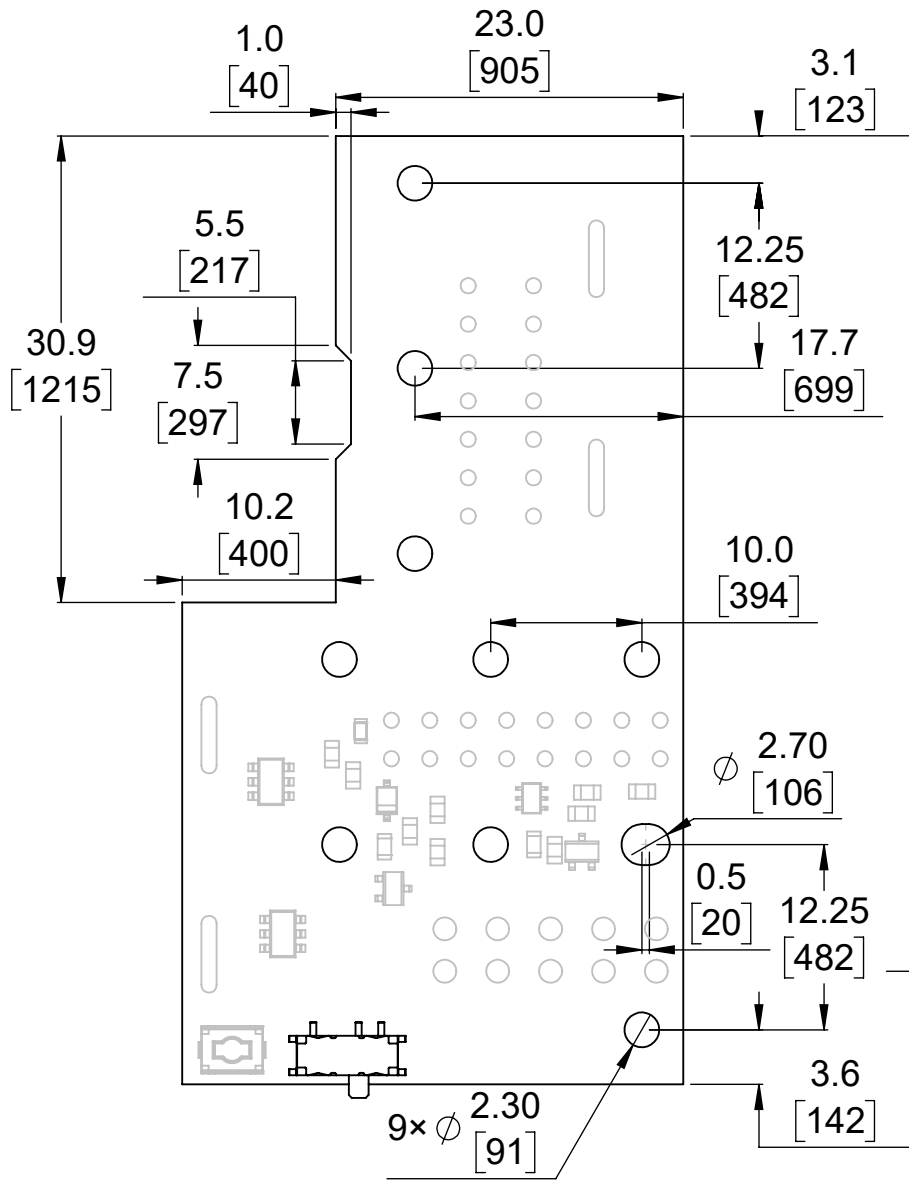
Drawing date:

30 August 2016

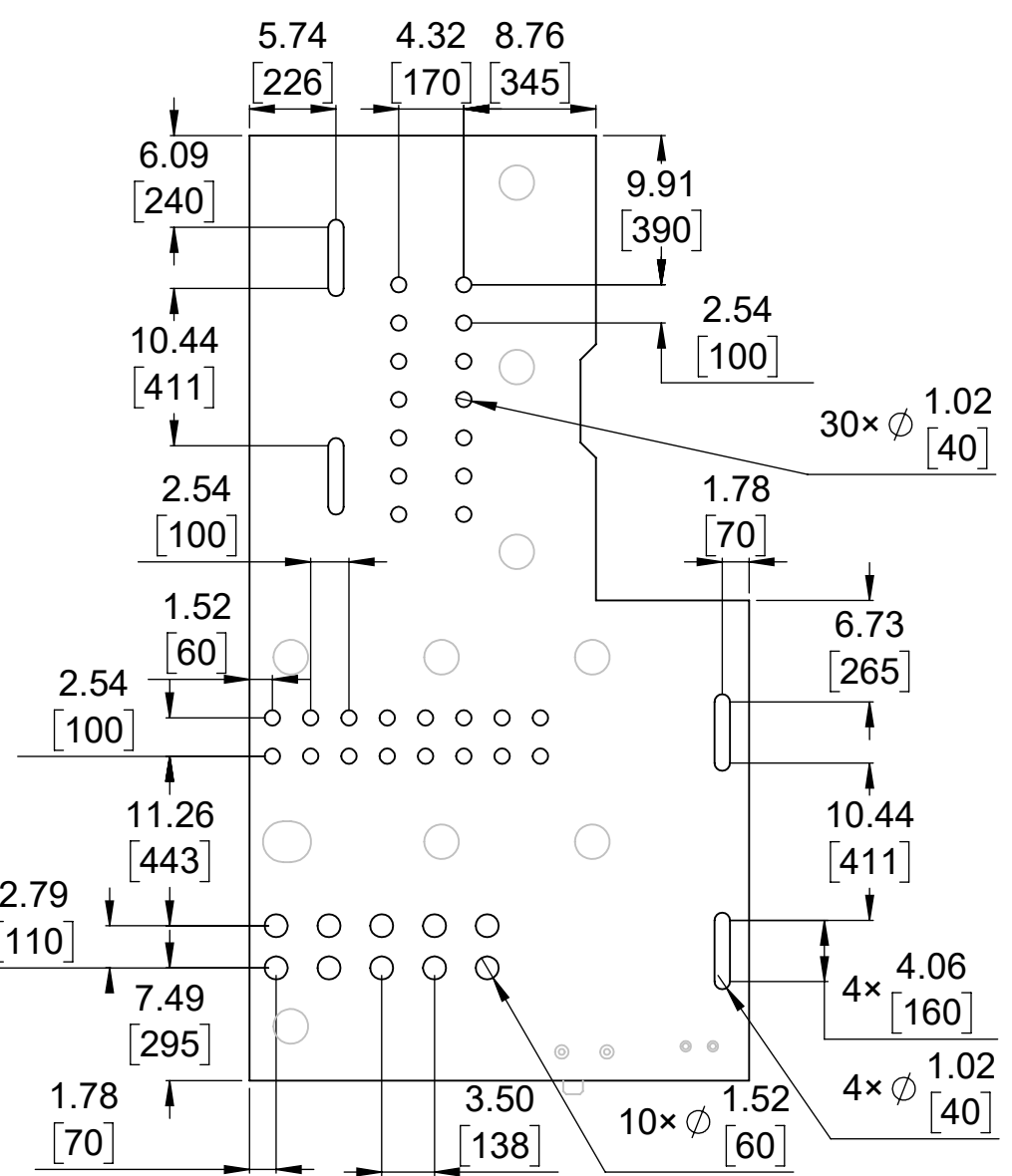
Units: mm
[mil]

PCB dev code:
rom01a


Robotics & Electronics
© 2016 Pololu Corporation




① Board dimensions (top view)
Scale 2:1



② Connector callouts (bottom view)
Scale 2:1

1. To get the specified scale, select 100% in print settings.
2. Drill location tolerance: ± 0.1 [± 5].
3. Board edge tolerance: ± 0.3 [± 10].

https://www.pololu.com/product/3541	
Name: Power Distribution Board for Romi Chassis	Item number: 3541
Drawing date: 30 August 2016	
Units: mm [mil]	PCB dev code: rom01a
 © 2016 Pololu Corporation	