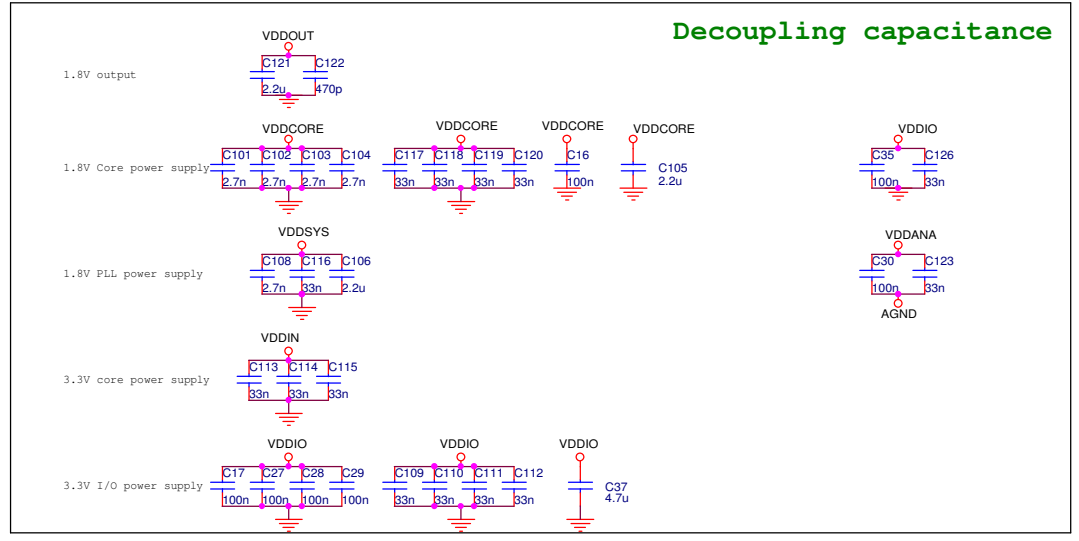


Decoupling capacitance



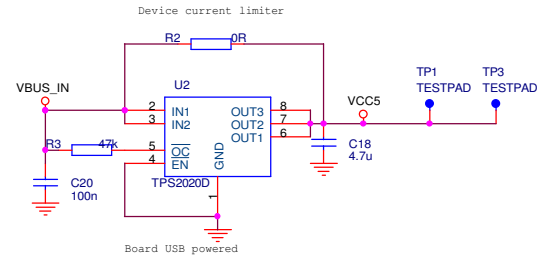
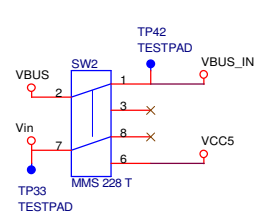
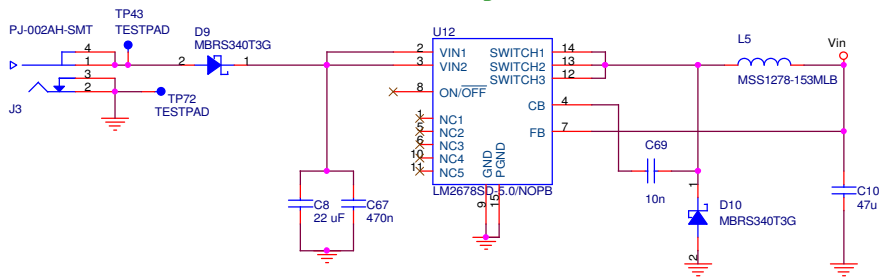
<Core Design>

ATMEL Nantes SA
La Chantrerie BP 70602
44306 Nantes Cedex 3
FRANCE

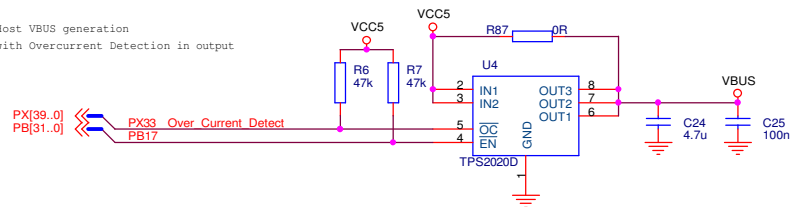
ATMEL

Title	EVK1100	
Size	Document Number	PROCESSOR
Date:	Friday, December 07, 2007	Sheet 1 of 13

5V Regulator

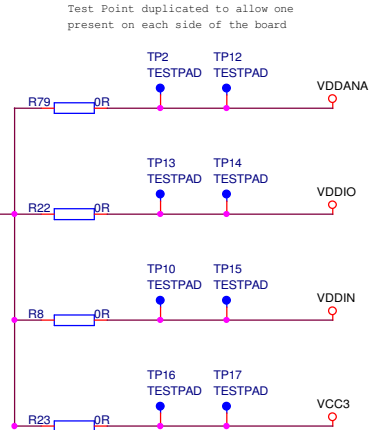
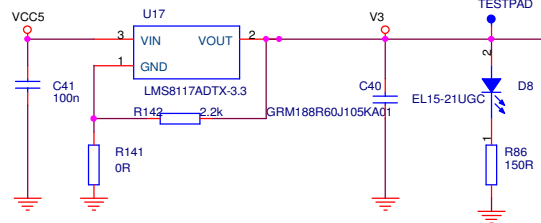


Host VBUS generation with Overcurrent Detection in output

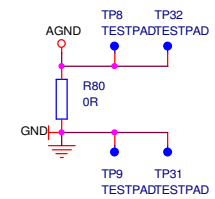


Shall only be added if TPS2020B

3.3V Regulator




VDDANA intends to provide a clean 3.3V power supply for analog blocks
 VDDIO intends to provide a clean 3.3V power supply for ATUC3A0512 buffers
 VDDIN intends to provide a clean 3.3V power supply for ATUC3A0512 internal regulator
 VCC3 intends to provide a clean 3.3V power supply for all peripherals



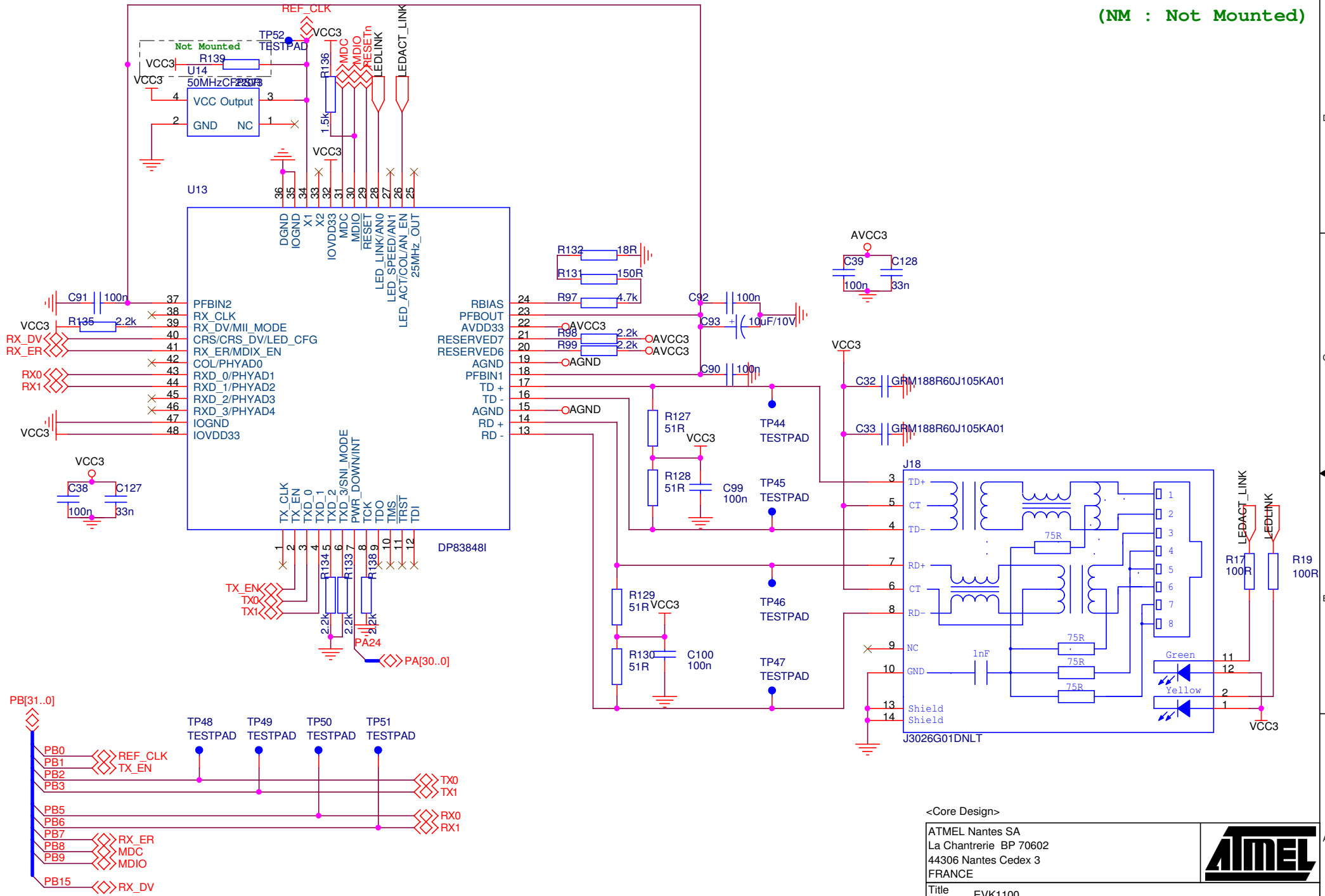
<Core Design>

ATMEL Nantes SA
 La Chanterrie BP 70602
 44306 Nantes Cedex 3
 FRANCE



Title	EVK1100		Rev	C
Size	A3	Document Number	POWER	
Date:	Friday, December 07, 2007	Sheet	2	of 13

(NM : Not Mounted)



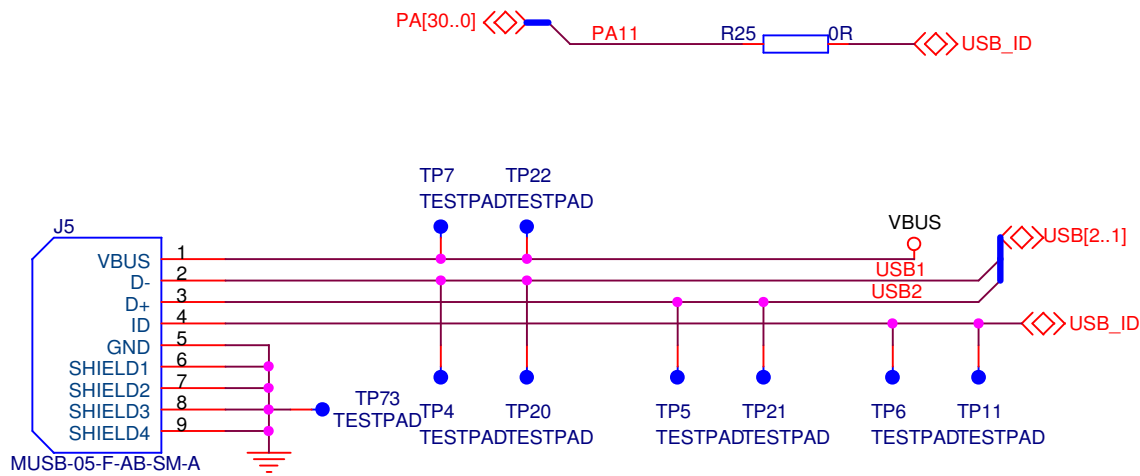
<Core Design>

ATMEL Nantes SA
 La Chantrerie BP 70602
 44306 Nantes Cedex 3
 FRANCE



Title		EVK1100	
Size	Document Number	ETHERNET	
A4			Rev C
Date:	Friday, December 07, 2007	Sheet	3 of 13

(NM : Not Mounted)



<Core Design>

ATMEL Nantes SA
La Chantrerie BP 70602
44306 Nantes Cedex 3
FRANCE



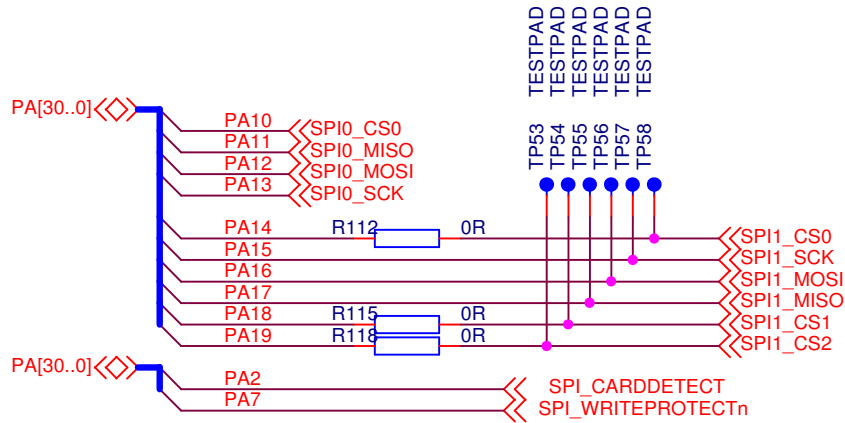
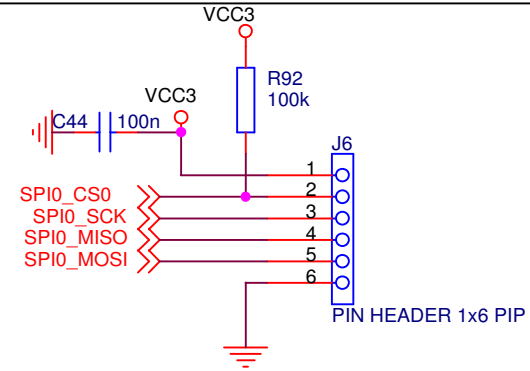
Title EVK1100

Size A Document Number USB Rev C

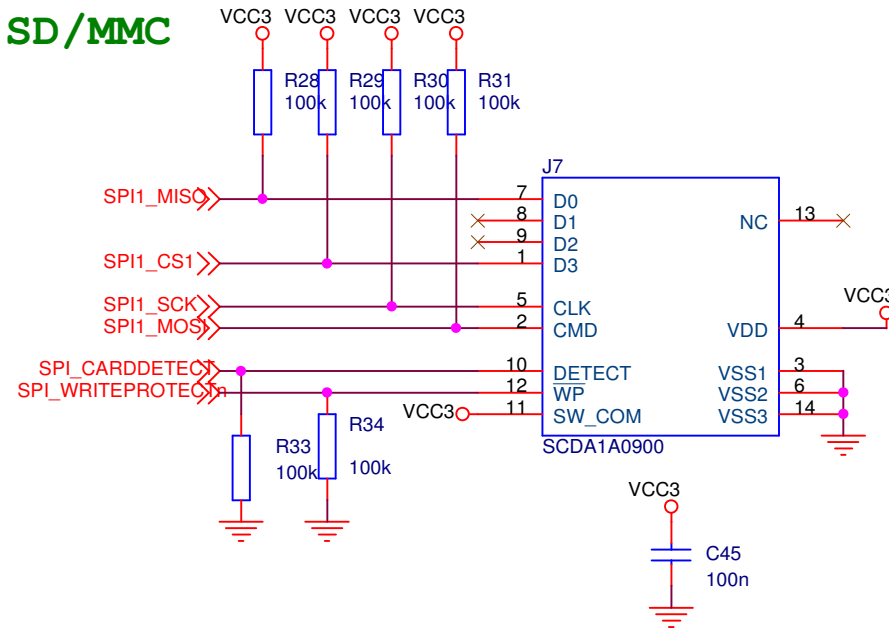
Date: Friday, December 07, 2007 Sheet 4 of 13

(NM : Not Mounted)

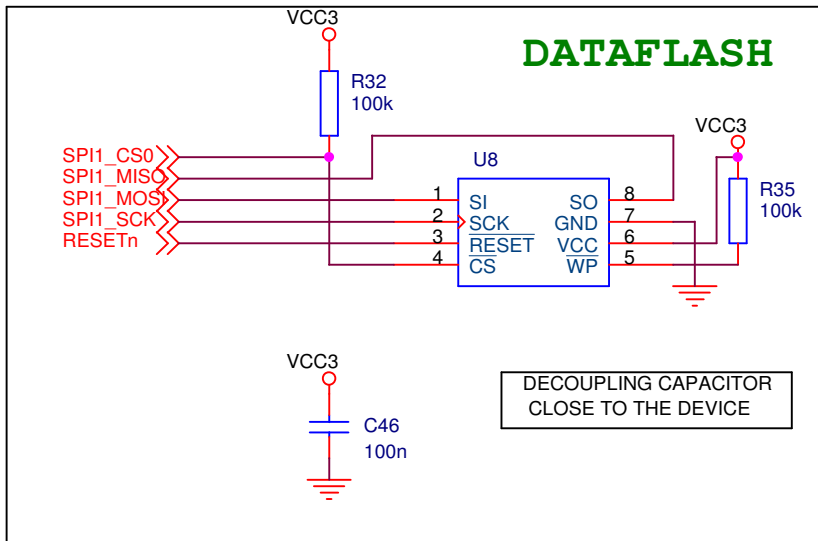
SPI



SD/MMC



DATAFLASH



<Core Design>

ATMEL Nantes SA
La Chantrerie BP 70602
44306 Nantes Cedex 3
FRANCE



Title EVK1100

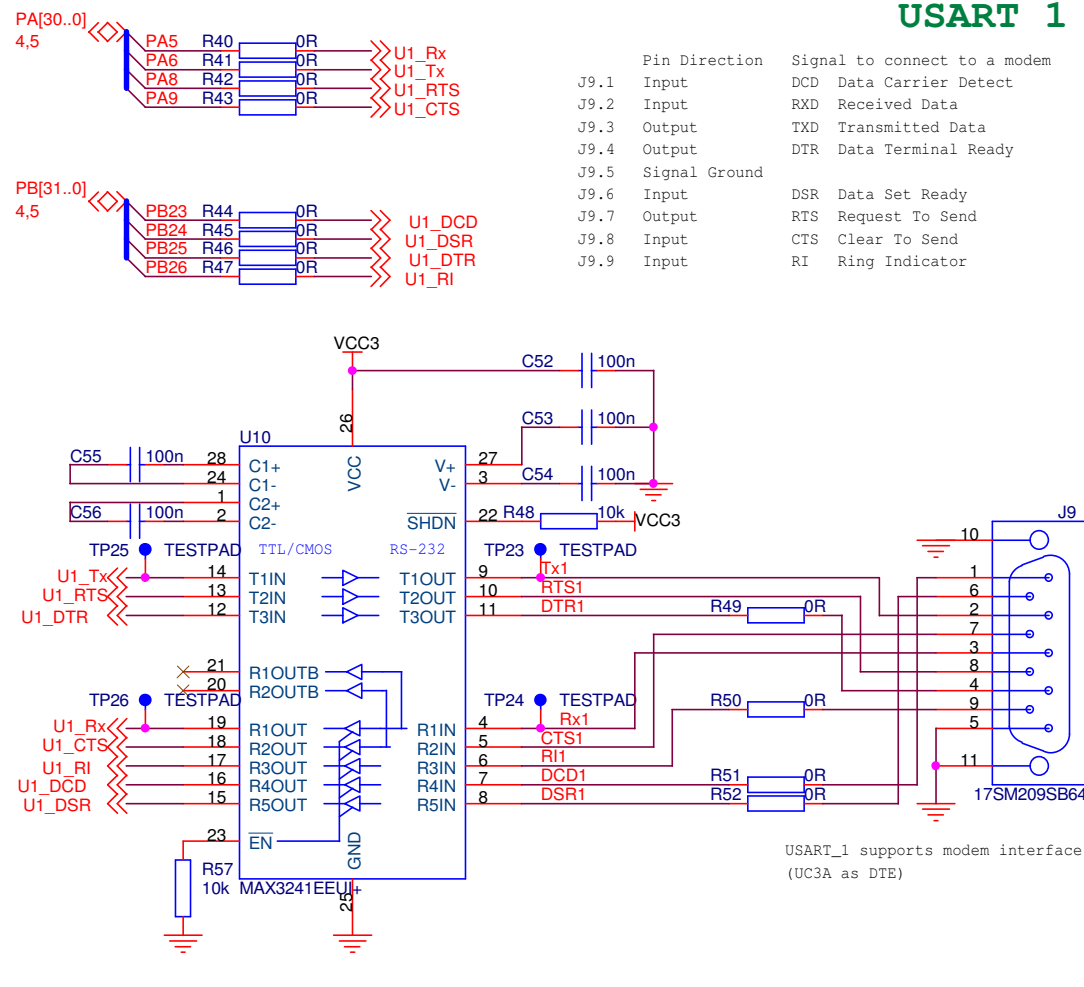
Size A Document Number

SPI

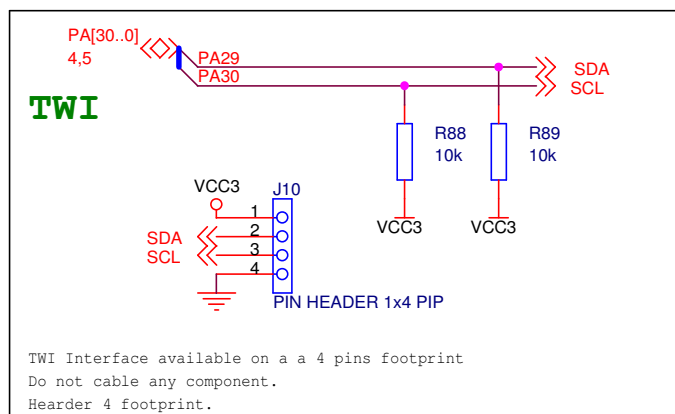
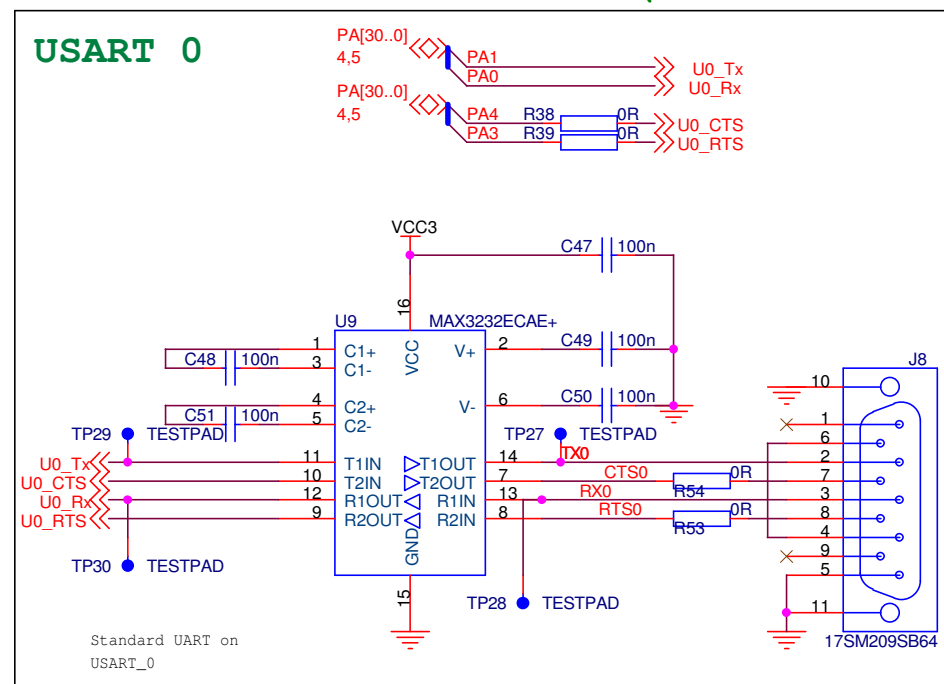
Rev C

Date: Friday, December 07, 2007 Sheet 5 of 13

USART 1



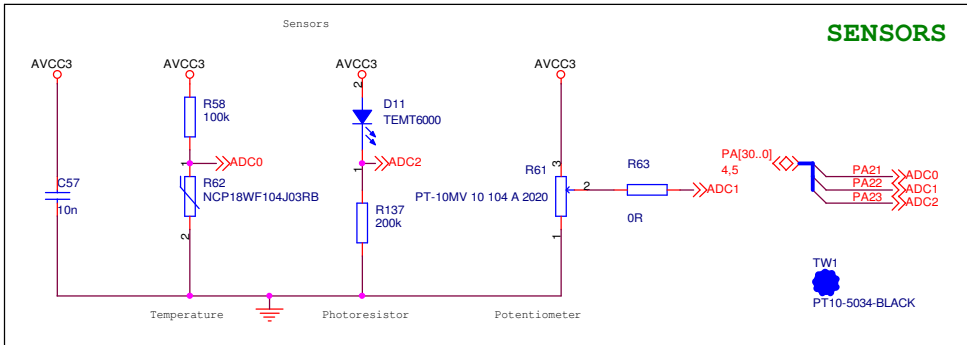
USART 0



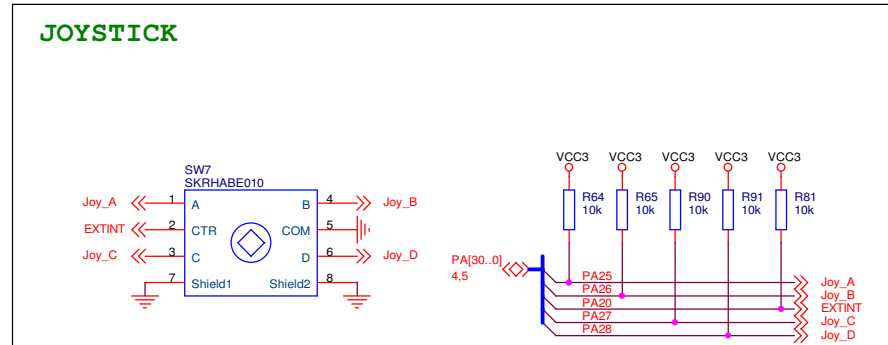
<Core Design>

ATMEL Nantes SA La Chantrerie BP 70602 44306 Nantes Cedex 3 FRANCE		
Title EVK1100		
Size A4	Document Number USART	Rev C
Date: Friday, December 07, 2007	Sheet 6	of 13

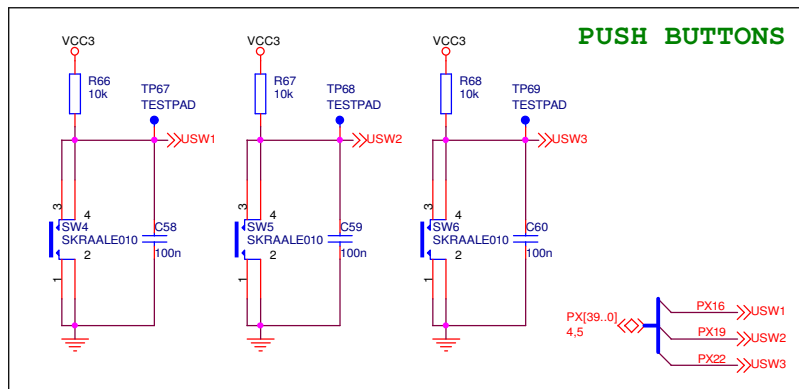
SENSORS



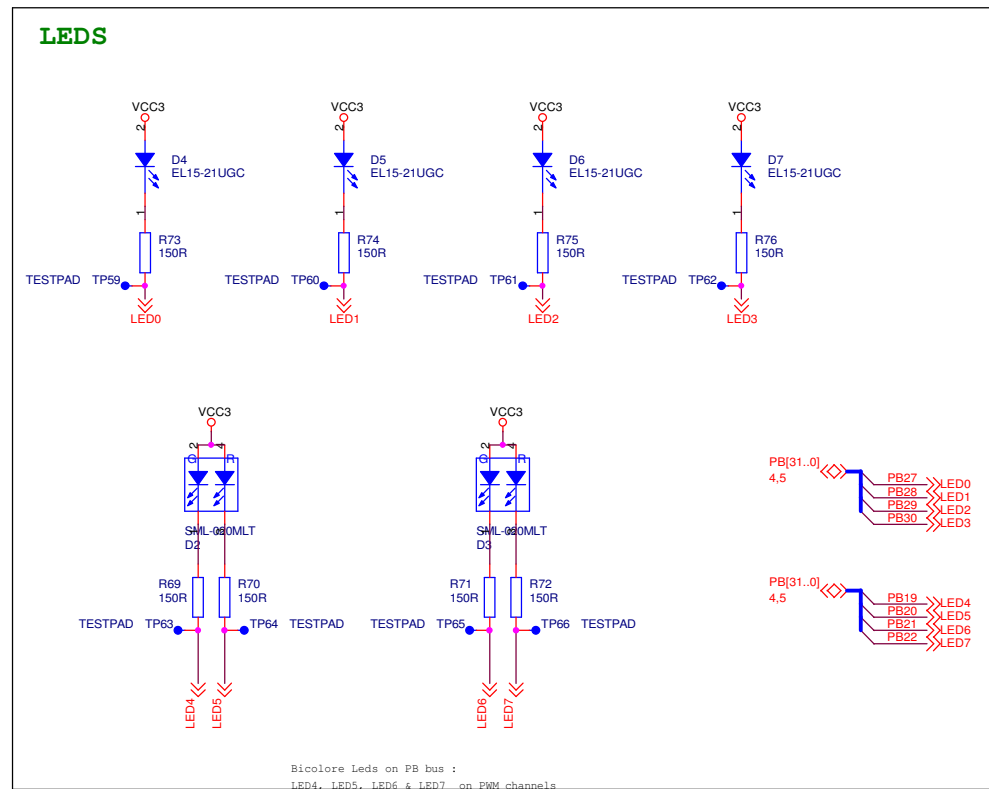
JOYSTICK



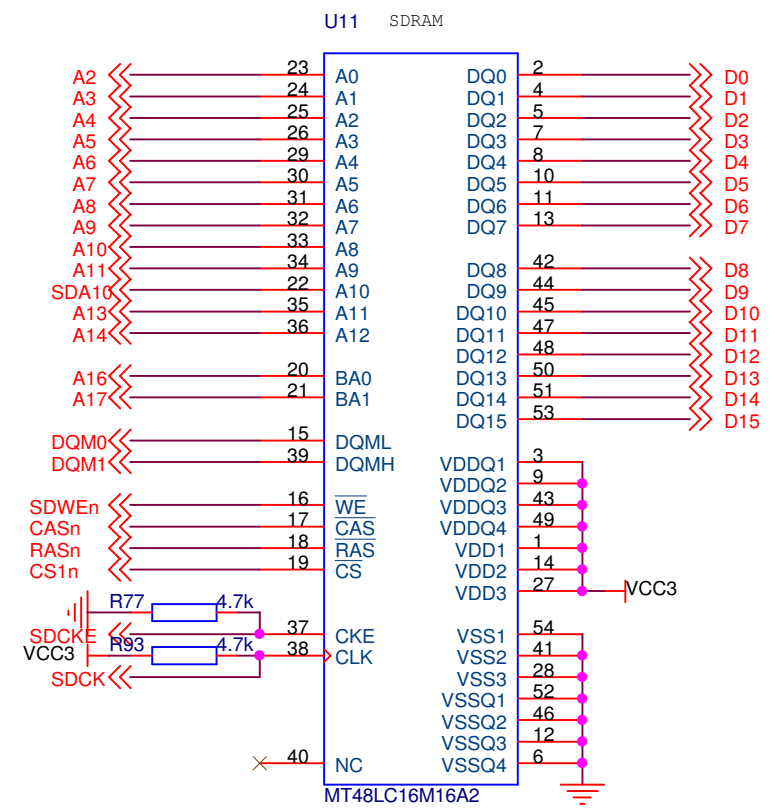
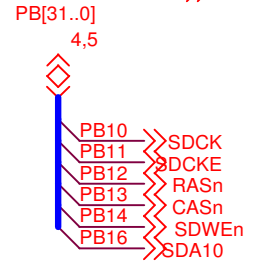
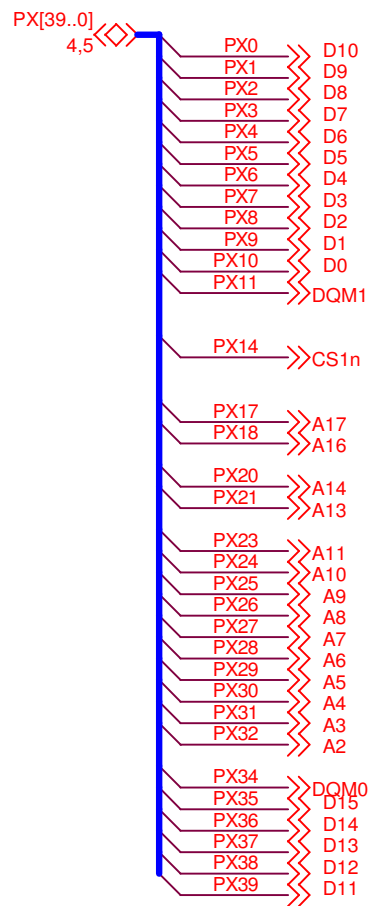
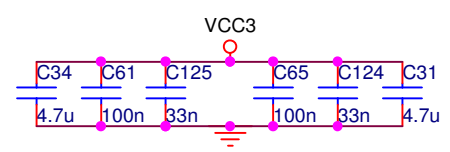
PUSH BUTTONS



LEDS



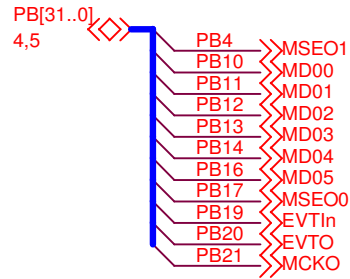
(NM : Not Mounted)



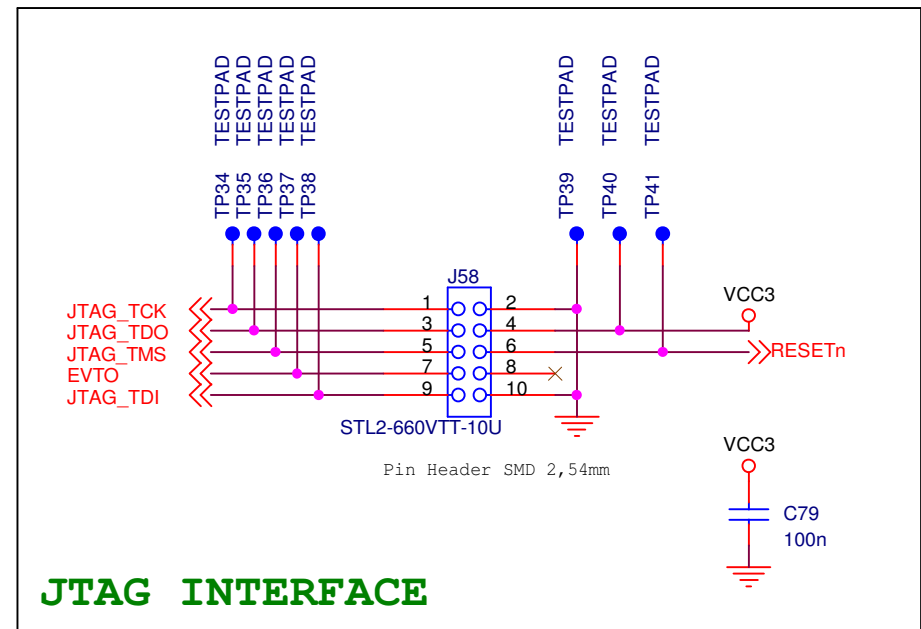
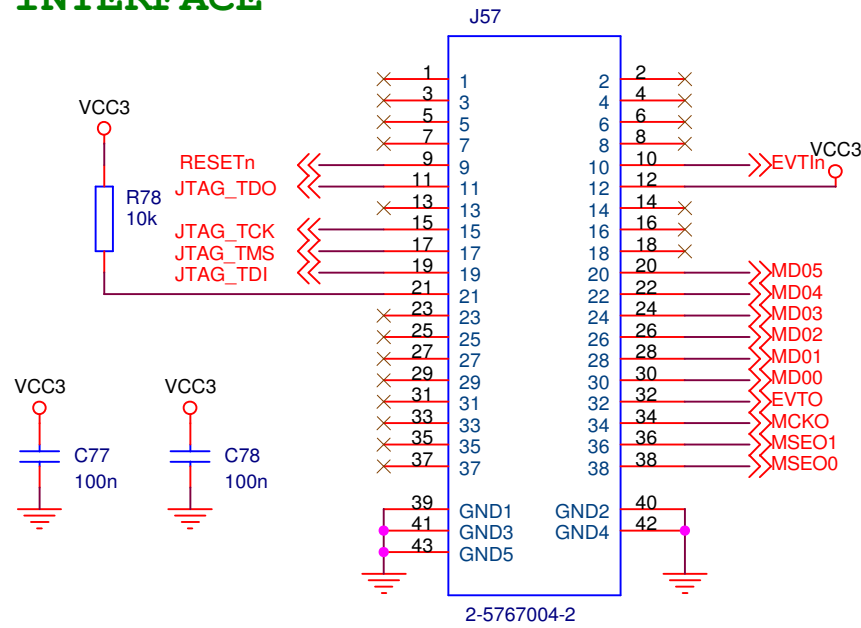
<Core Design>

ATMEL Nantes SA La Chantrerie BP 70602 44306 Nantes Cedex 3 FRANCE		
Title EVK1100		
Size A	Document Number MEMORIES	Rev C
Date: Friday, December 07, 2007	Sheet 8 of 13	

(NM : Not Mounted)



NEXUS INTERFACE



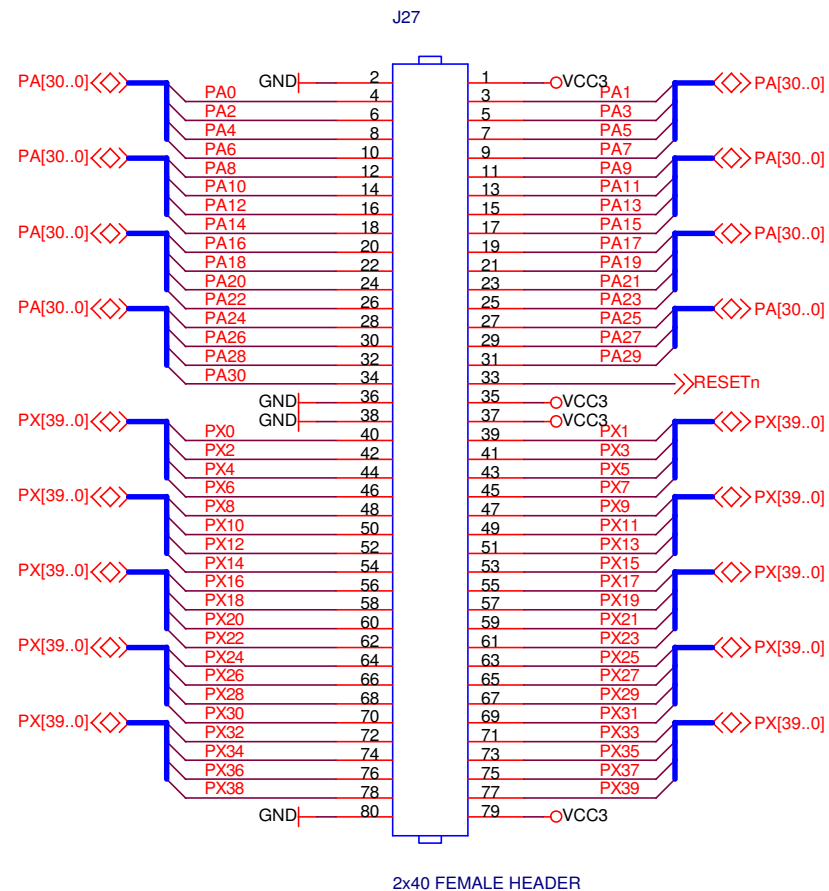
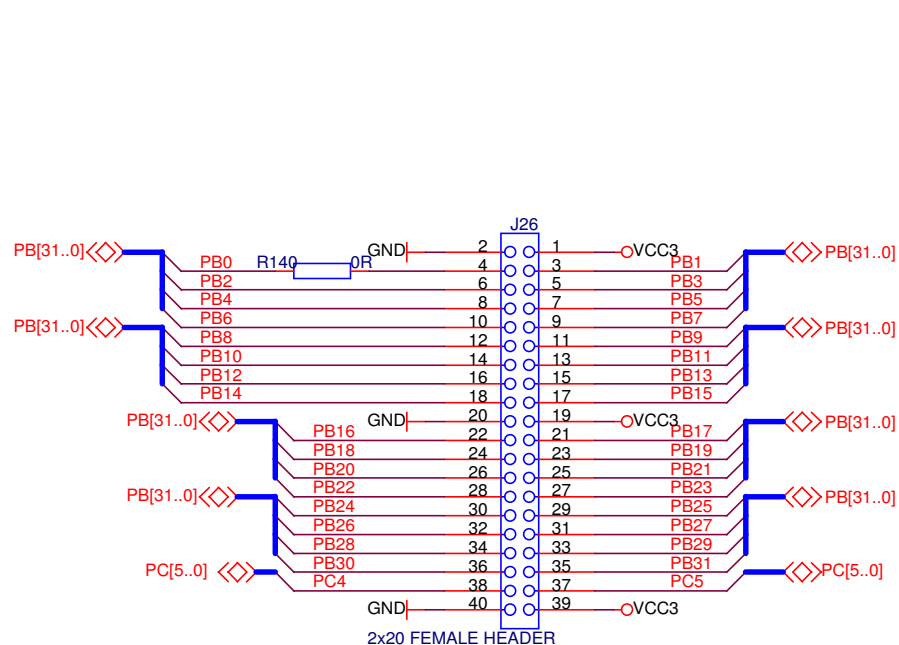
JTAG INTERFACE

<Core Design>

ATMEL Nantes SA La Chantrerie BP 70602 44306 Nantes Cedex 3 FRANCE		
Title EVK1100		
Size A	Document Number MEMORIES	Rev C
Date: Friday, December 07, 2007	Sheet 9 of 13	

No component shall be implemented for this connector
 Only a footprint of Header 1.27mm shall be present on PCB

This connector allows easy connection of peripheral in the prototyping area



<Core Design>

ATMEL Nantes SA
 La Chantrerie BP 70602
 44306 Nantes Cedex 3
 FRANCE



Title EVK1100

Size A4 Document Number

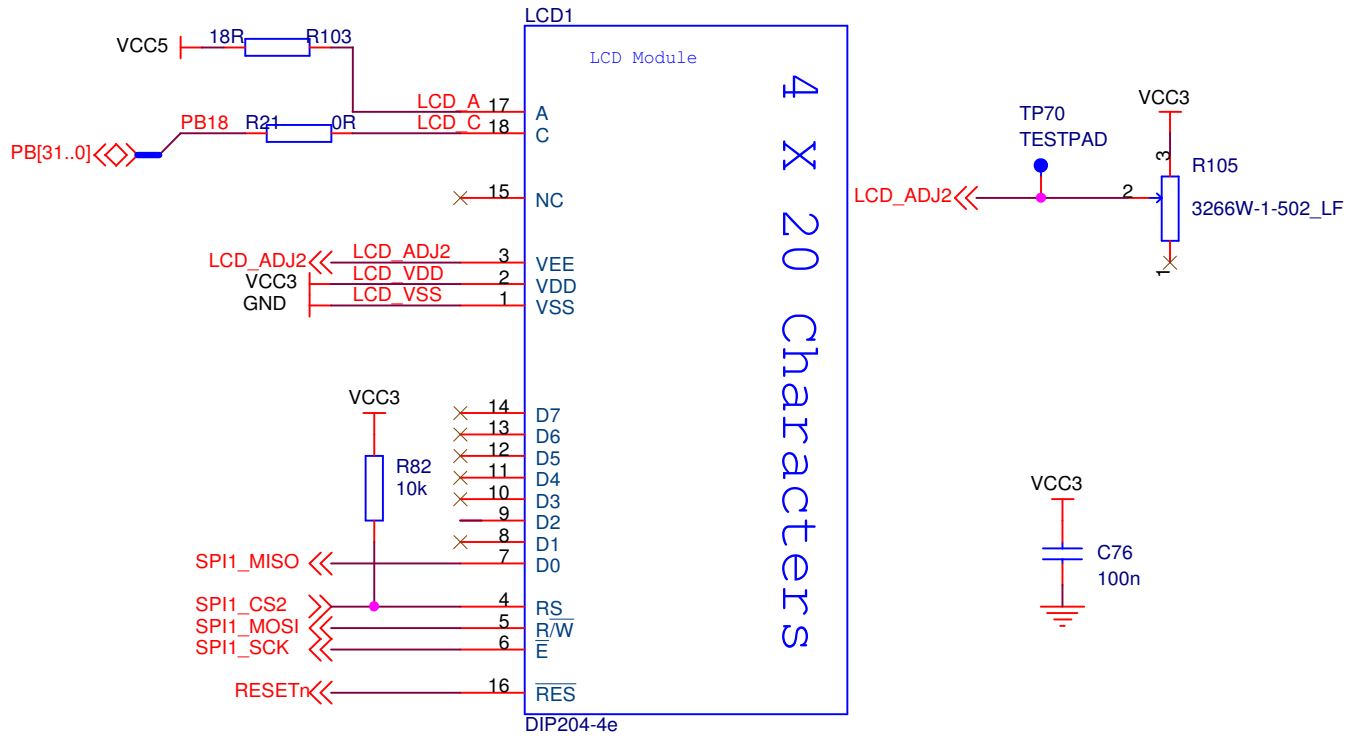
EXPANSION

Rev C

Date: Friday, December 07, 2007 Sheet 10 of 13

(NM : Not Mounted)

EA-DIP204-4 Blue white LCD
KS0073 controller



<Core Design>

ATMEL Nantes SA
La Chantrerie BP 70602
44306 Nantes Cedex 3
FRANCE



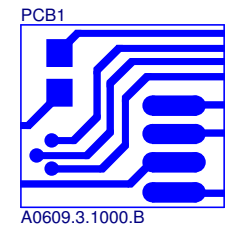
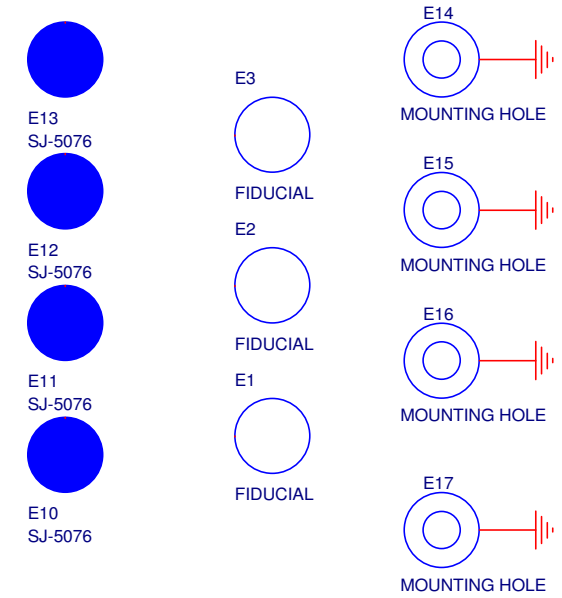
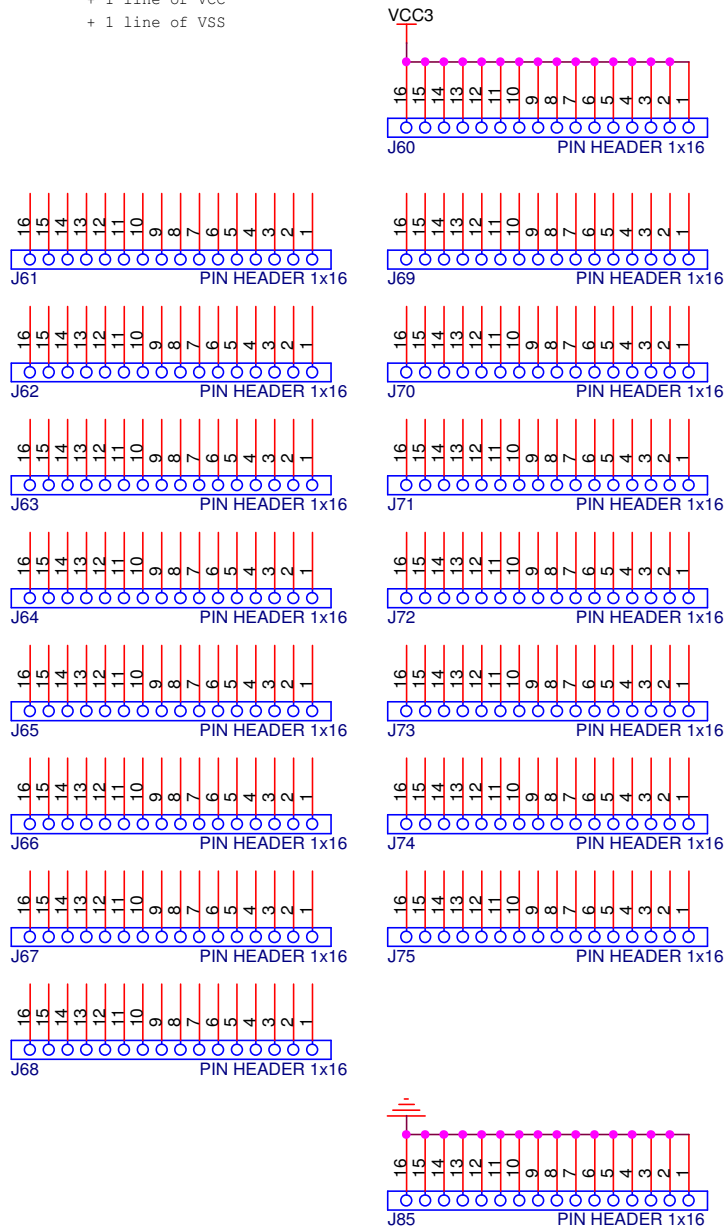
Title EVK1100

Size A Document Number LCD

Rev C

Date: Friday, December 07, 2007 Sheet 11 of 13

24 lines of array
 + 1 line of VCC
 + 1 line of VSS



<Core Design>

ATMEL Nantes SA La Chantrerie BP 70602 44306 Nantes Cedex 3 FRANCE		
Title EVK1100		
Size A4	Document Number PROTO	Rev C
Date: Friday, December 07, 2007	Sheet 12 of 13	

ERRATA

REV C/

USART 0

U0_CTS (PA.4) must be connected to U9.9
U0_RTS (PA.3) must be connected to U9.10
U9.8 (R2IN) must be connected to J8.7
U9.7 (T2OUT) must be connected to J8.8

USART 1

U10.11 (DTR1) must be connected to J9.6
U10.8 (DSR1) must be connected to J9.4

LEDS

LED 5/Green is connected to GPIO PB.19 and not to PB.20
LED 5/Red is connected to GPIO PB.20 and not to PB.19
LED 6/Green is connected to GPIO PB.21 and not to PB.22
LED 6/Red is connected to GPIO PB.22 and not to PB.21

SPI

Wrong Silkscreen : MISO and SCK are swapped

<Core Design>

ATMEL Nantes SA
La Chantrerie BP 70602
44306 Nantes Cedex 3
FRANCE



Title EVK1100

Size A Document Number ERRATA Rev C

Date: Friday, December 07, 2007 Sheet 13 of 13