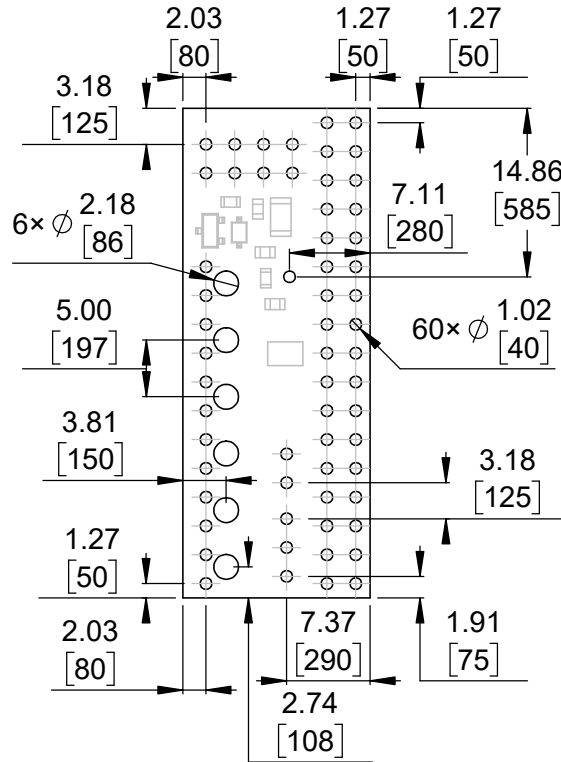
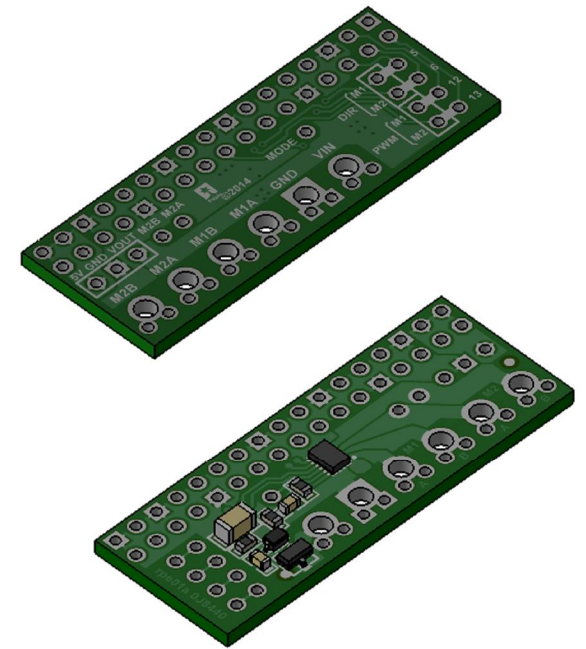


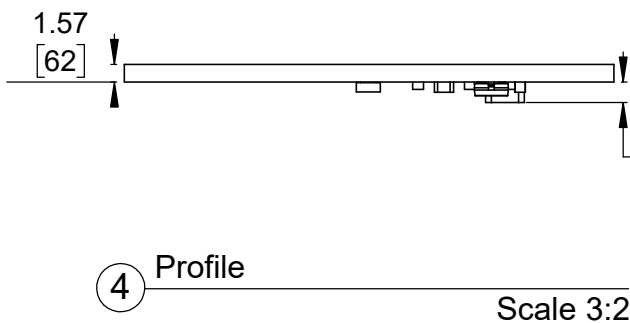
① Board dimensions (top view)
Scale 3:2



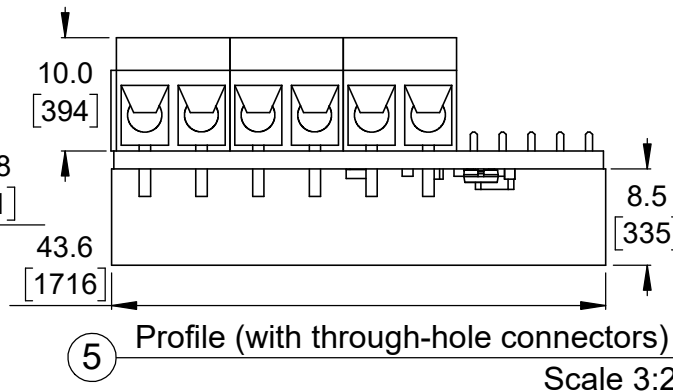
② Connector callouts (bottom view)
Scale 3:2



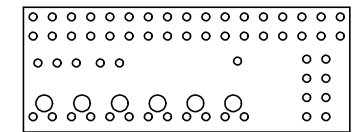
③ Isometric view
Scale 3:2



④ Profile
Scale 3:2




⑤ Profile (with through-hole connectors)
Scale 3:2



⑥ Actual size
Scale 1:1

1. Grid lines indicate 2.54mm [100 mil] spacing.
2. To get the specified scale, select 100% in print settings.
3. Drill location tolerance: ± 0.1 [± 5].
4. Board edge tolerance: ± 0.3 [± 10].

<https://www.pololu.com/product/2753>

Name: Pololu DRV8835 Dual Motor Driver Kit for Raspberry Pi		Item number: 2753
Drawing date: 17 May 2018	Dev code: rpe01a	 Pololu Robotics & Electronics © 2018 Pololu Corporation
Units: mm [mil]	Material: mixed	