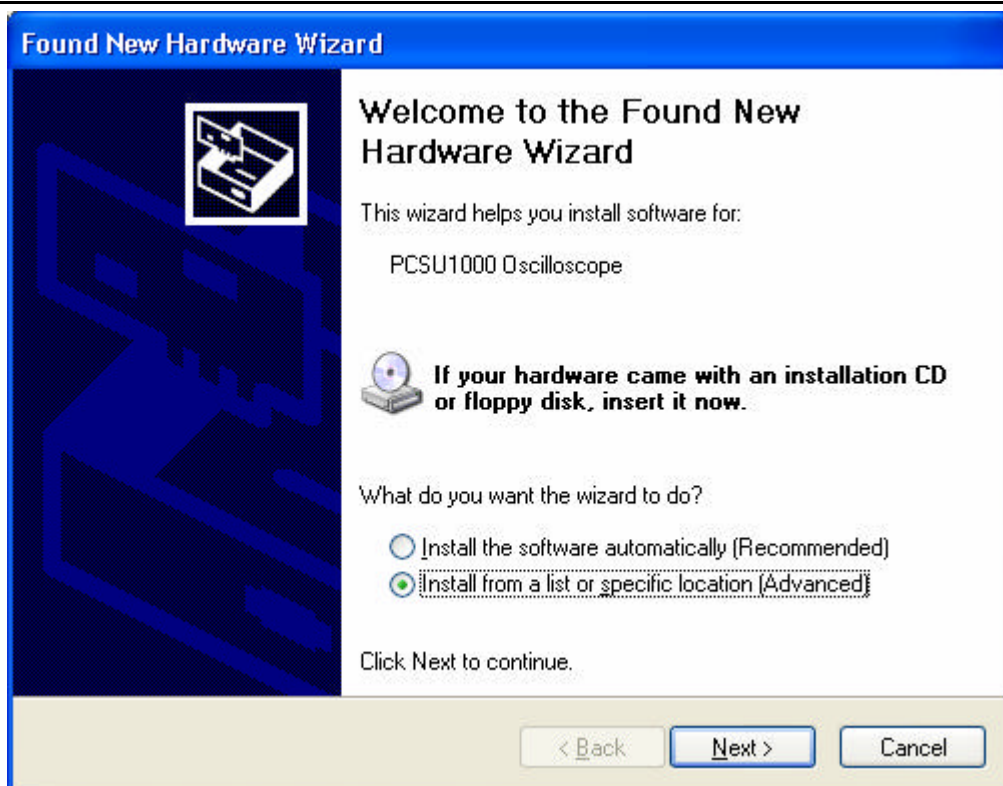


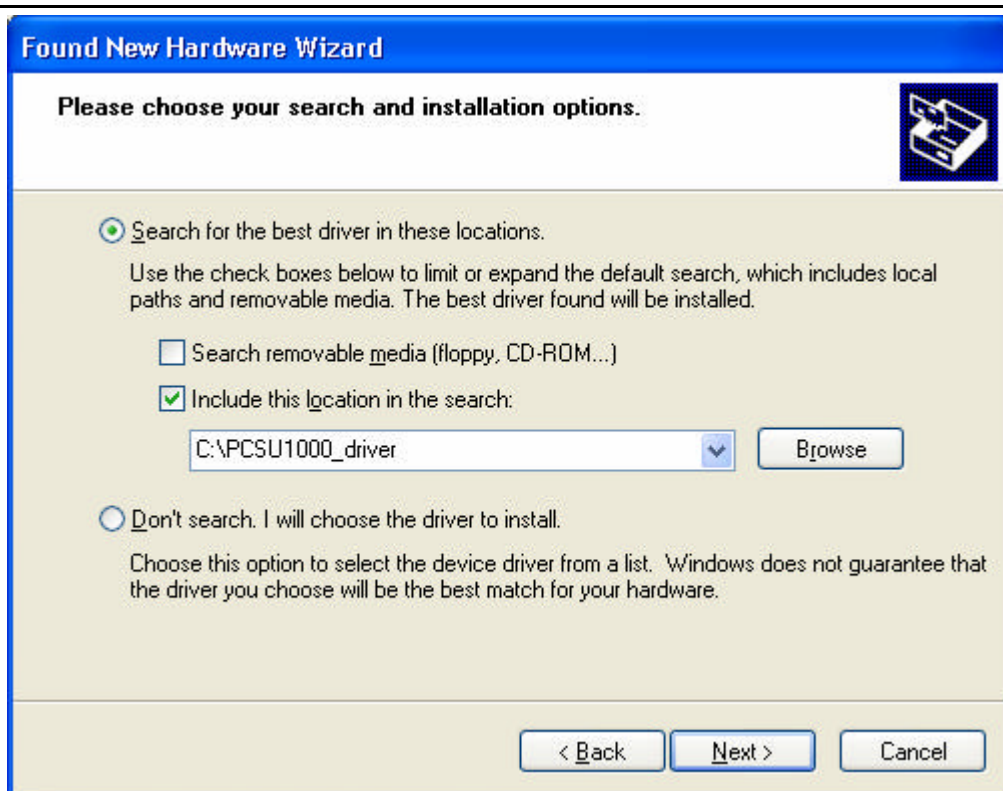
## PCSU1000 driver installation (WinXP example)



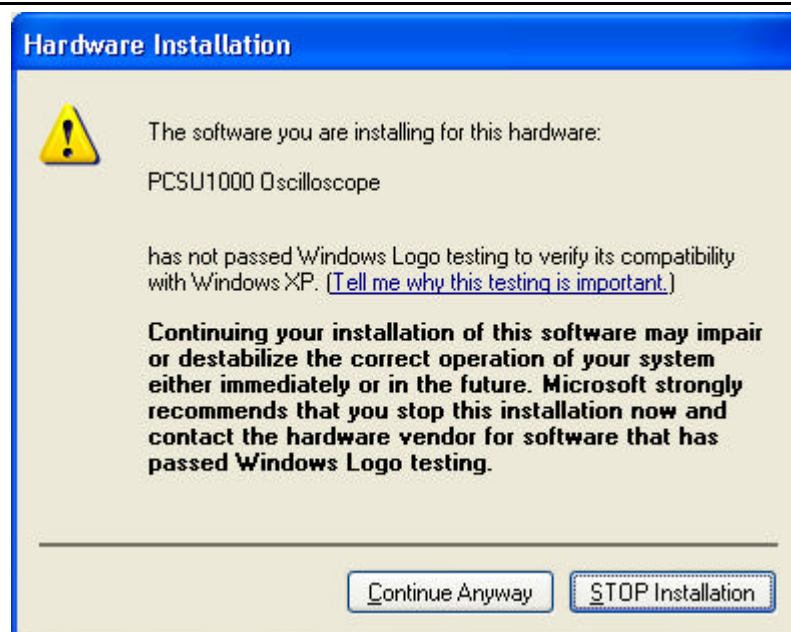
Select "No, not this time".



Select the option "Install from a list or specific location (Advanced)"



Locate the folder containing the driver files.



Click "Continue Anyway"

**Found New Hardware Wizard**



**Completing the Found New Hardware Wizard**

The wizard has finished installing the software for:



PCSU1000 Oscilloscope

Click Finish to close the wizard.

< Back

**Finish**

Cancel

**Click Finish.**

To verify that the proper device driver has been loaded, the Device Manager may be used. The "PCSU1000 Oscilloscope" should appear under the "Universal Serial Bus controllers" entry in Device Manager.

Please note that your Device Manager entries may not look exactly like those in the example here.

