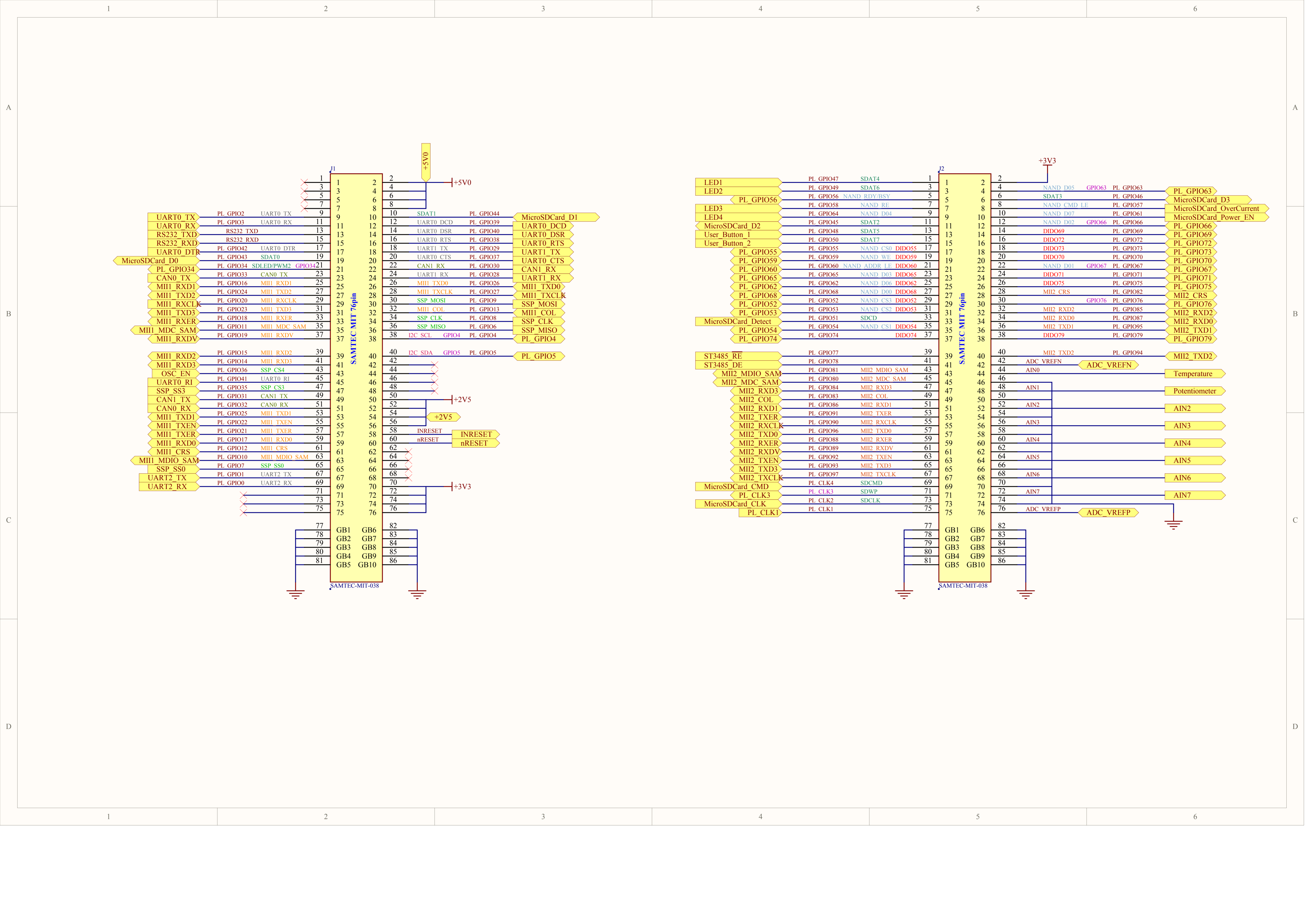
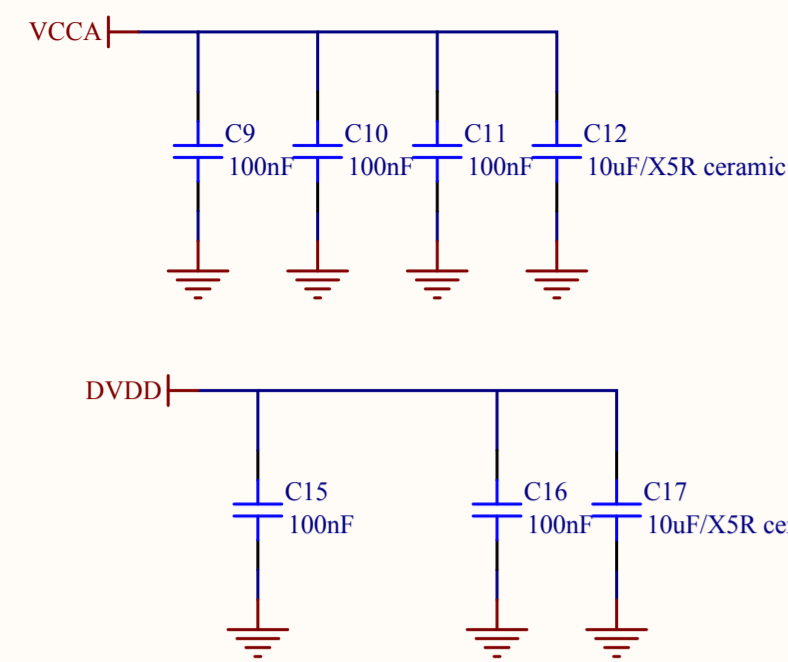


SPEArBASIC320 Automation MII mode Application board

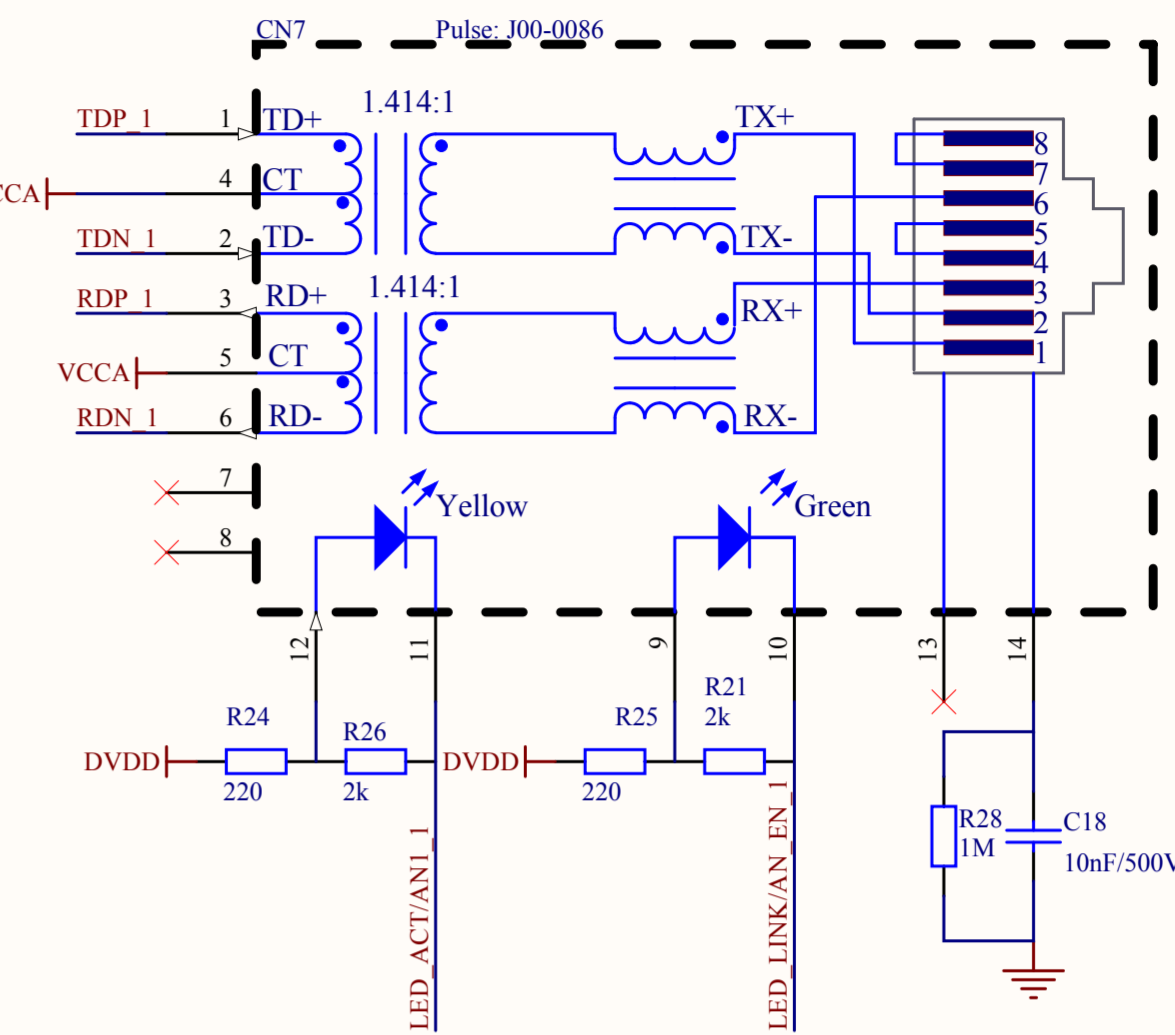
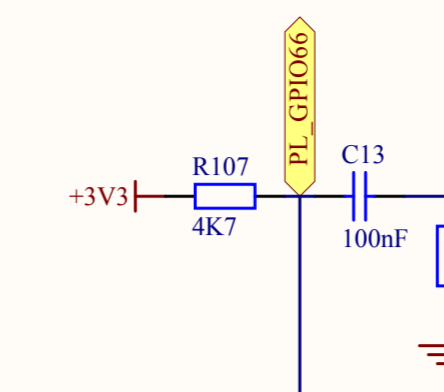
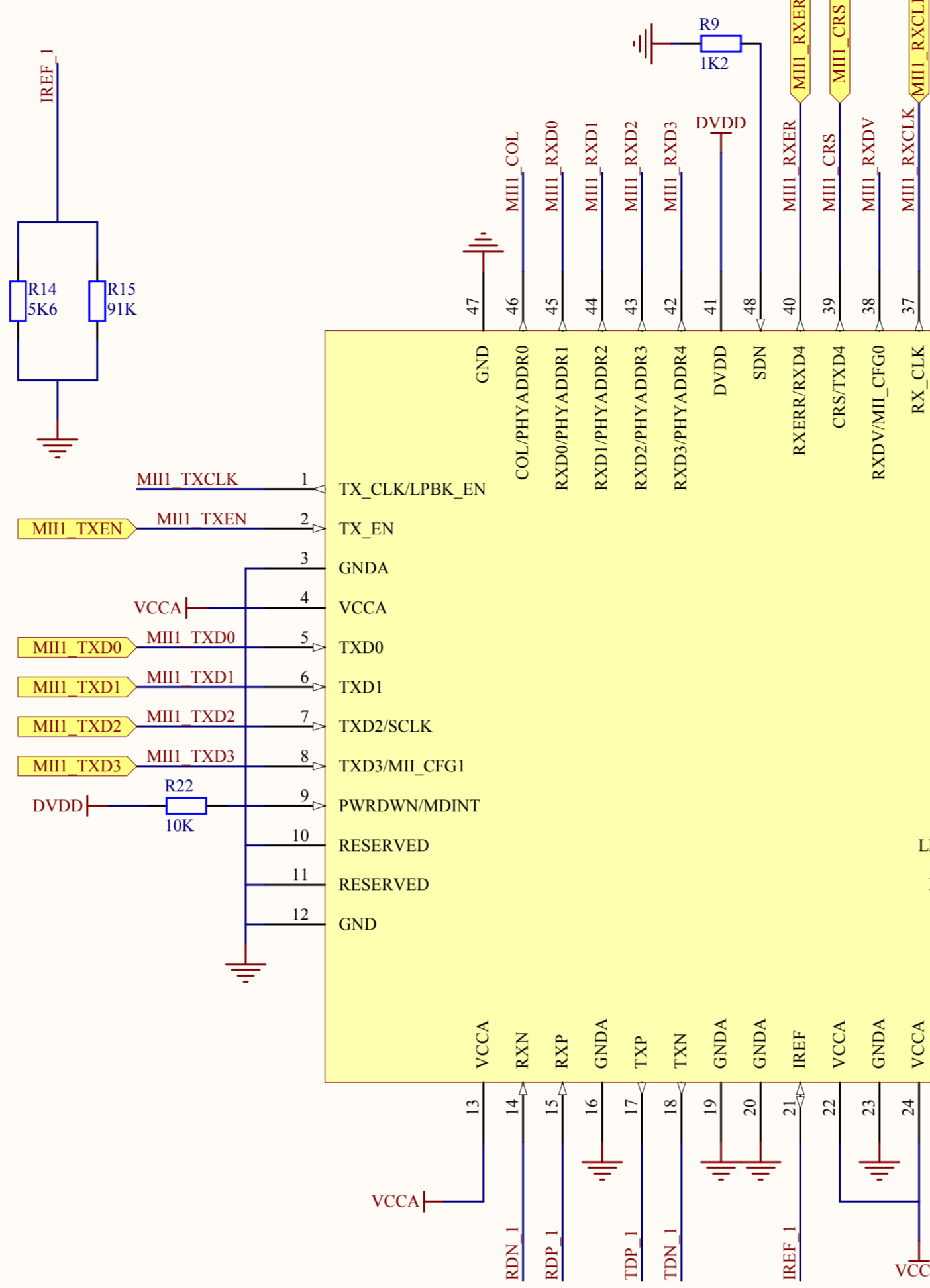
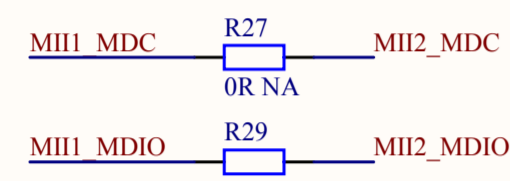
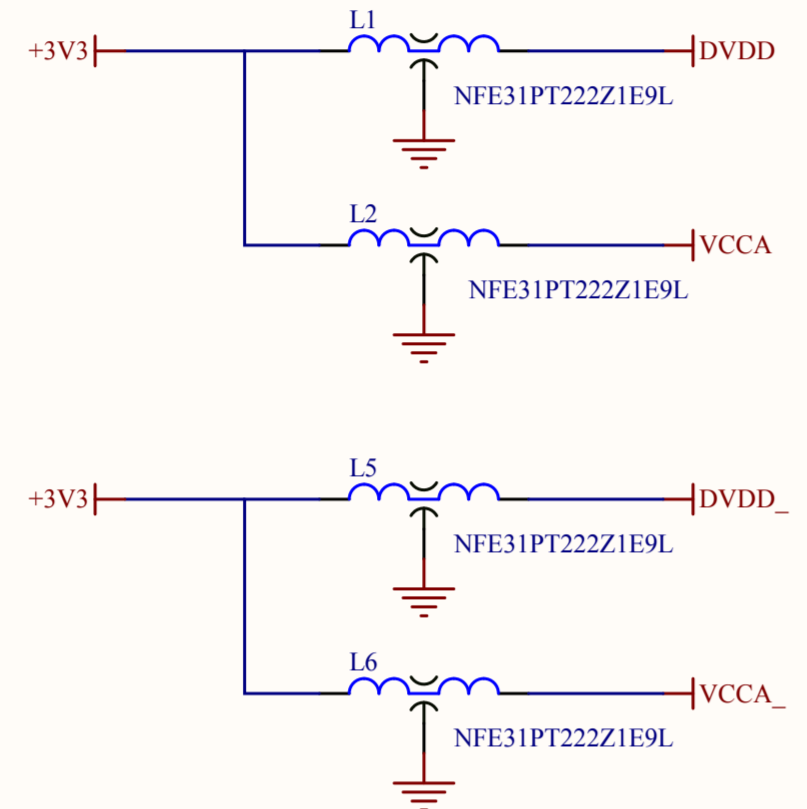
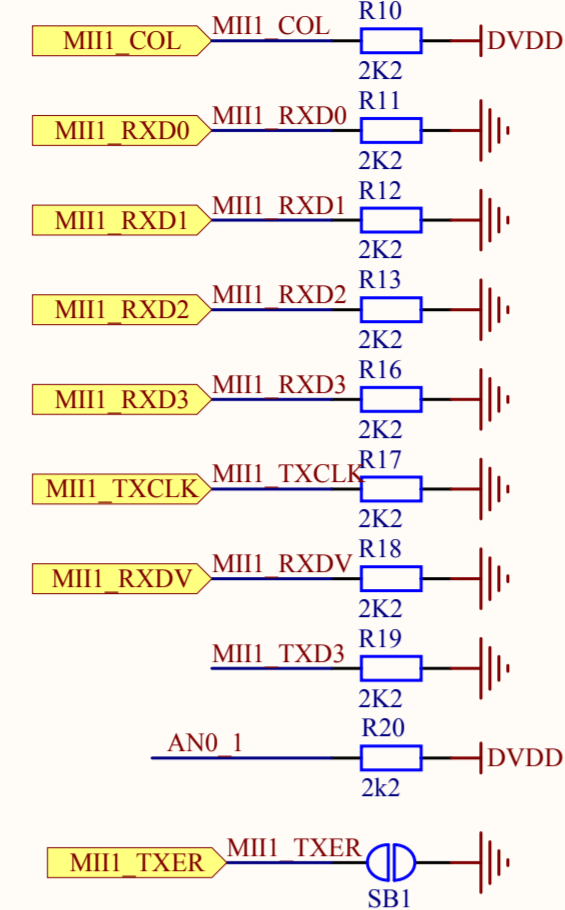


NOTE: +3V3 available in all blocks

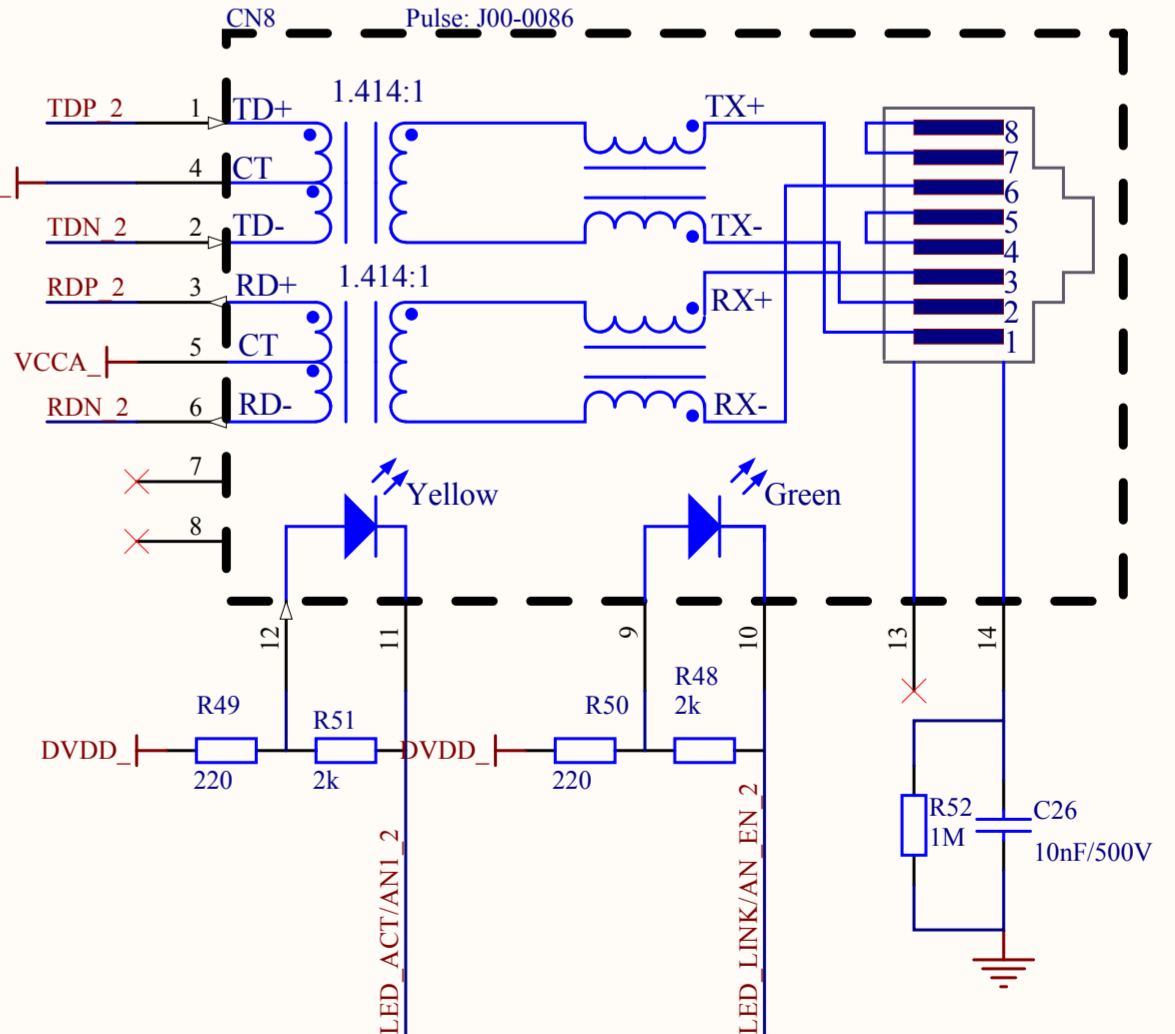
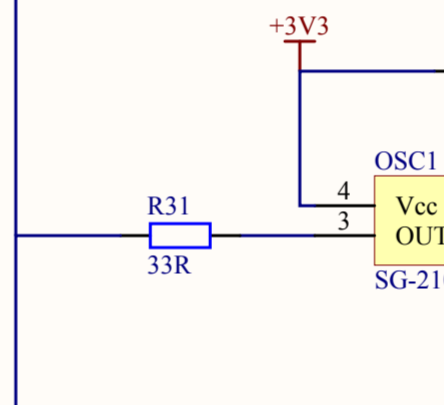
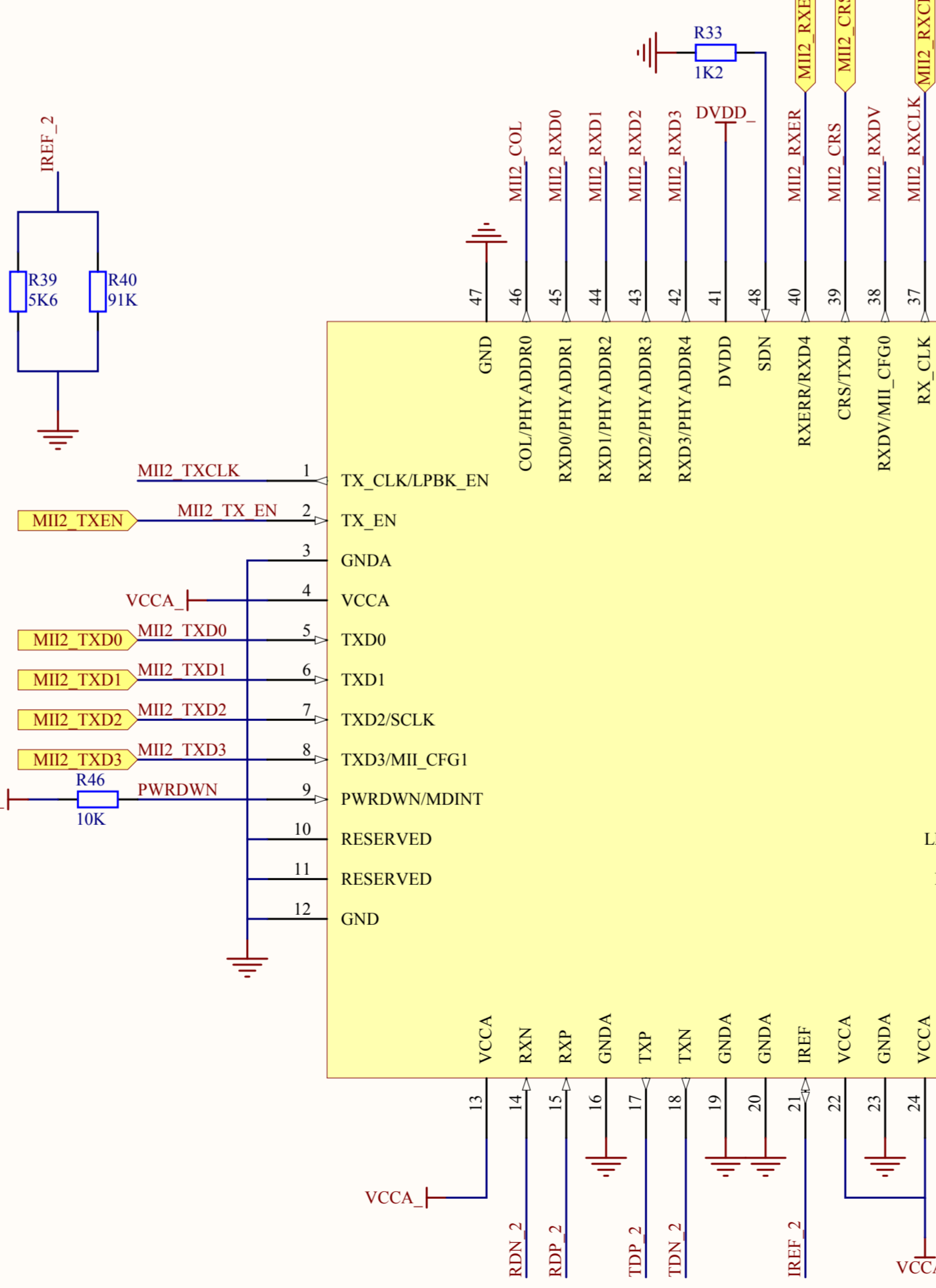
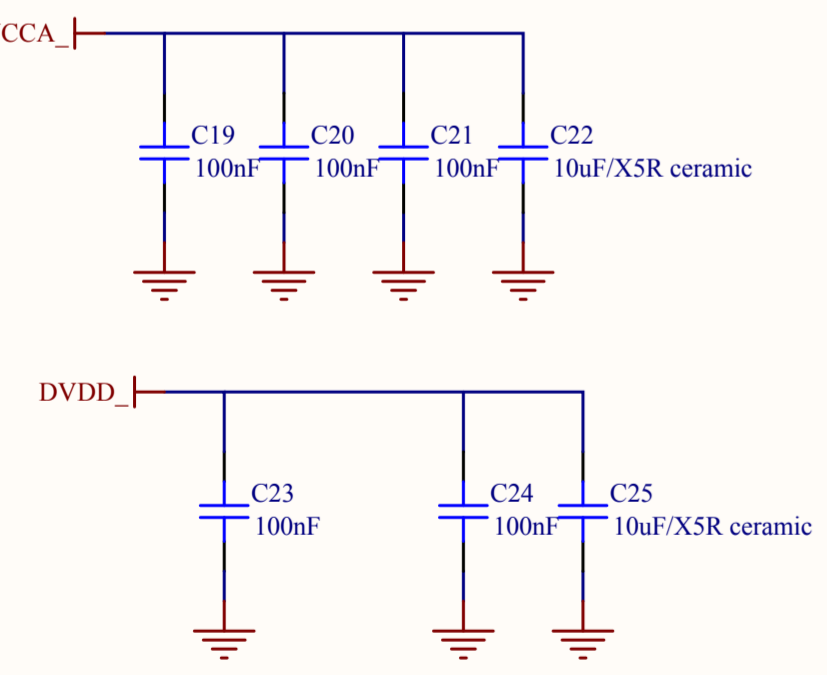
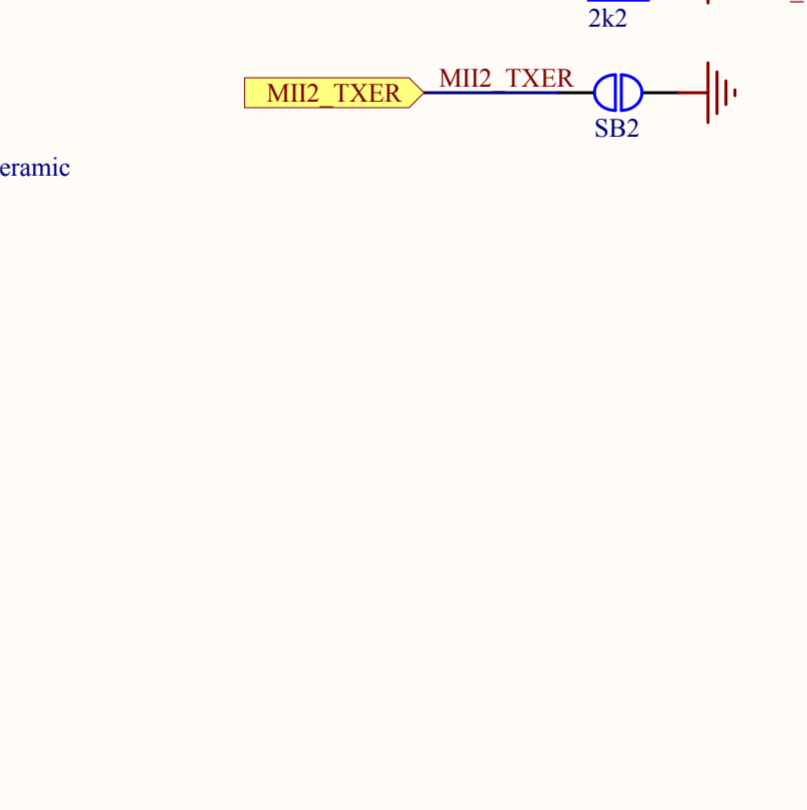
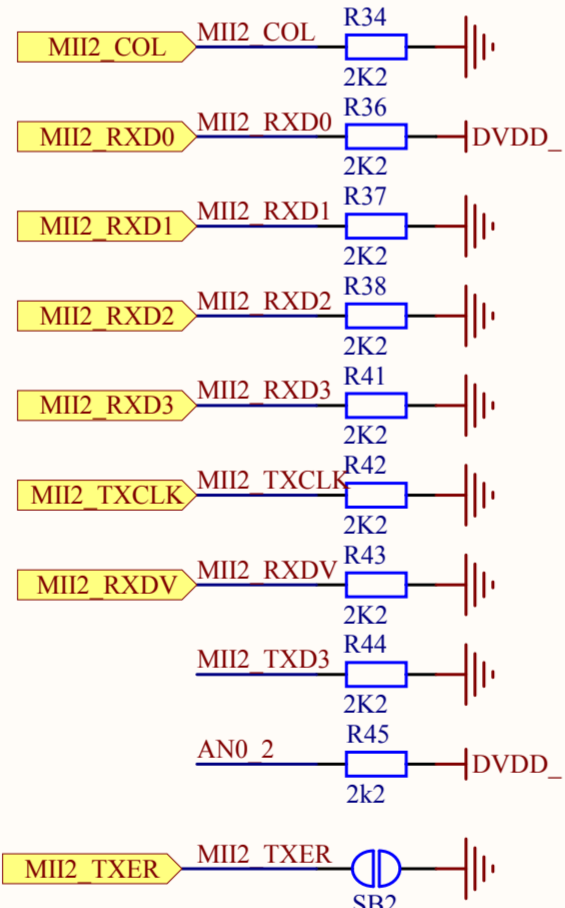


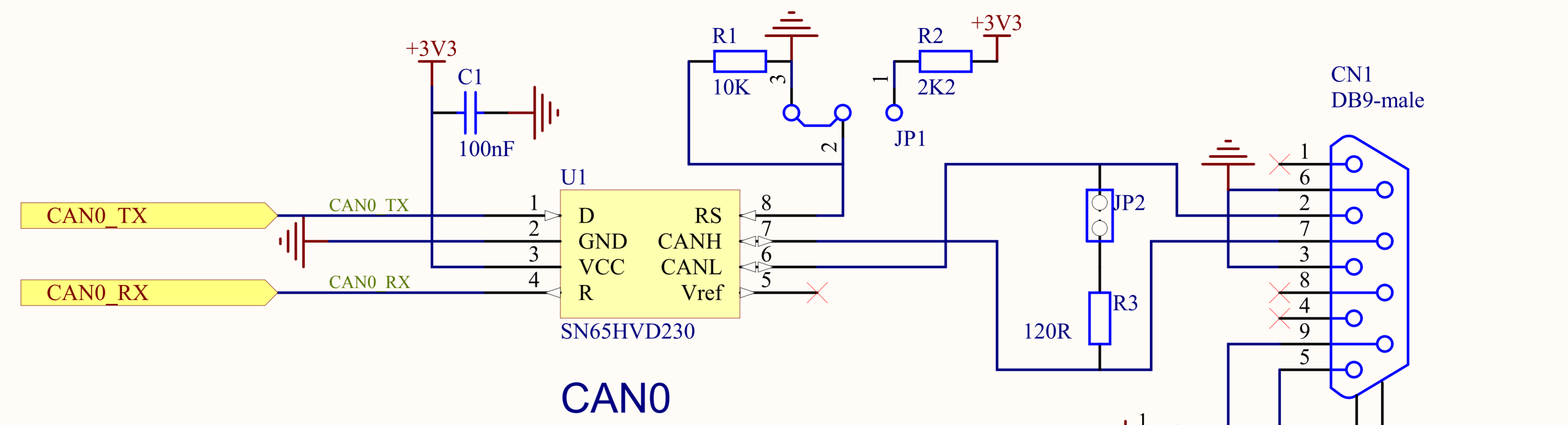


Boot Strap

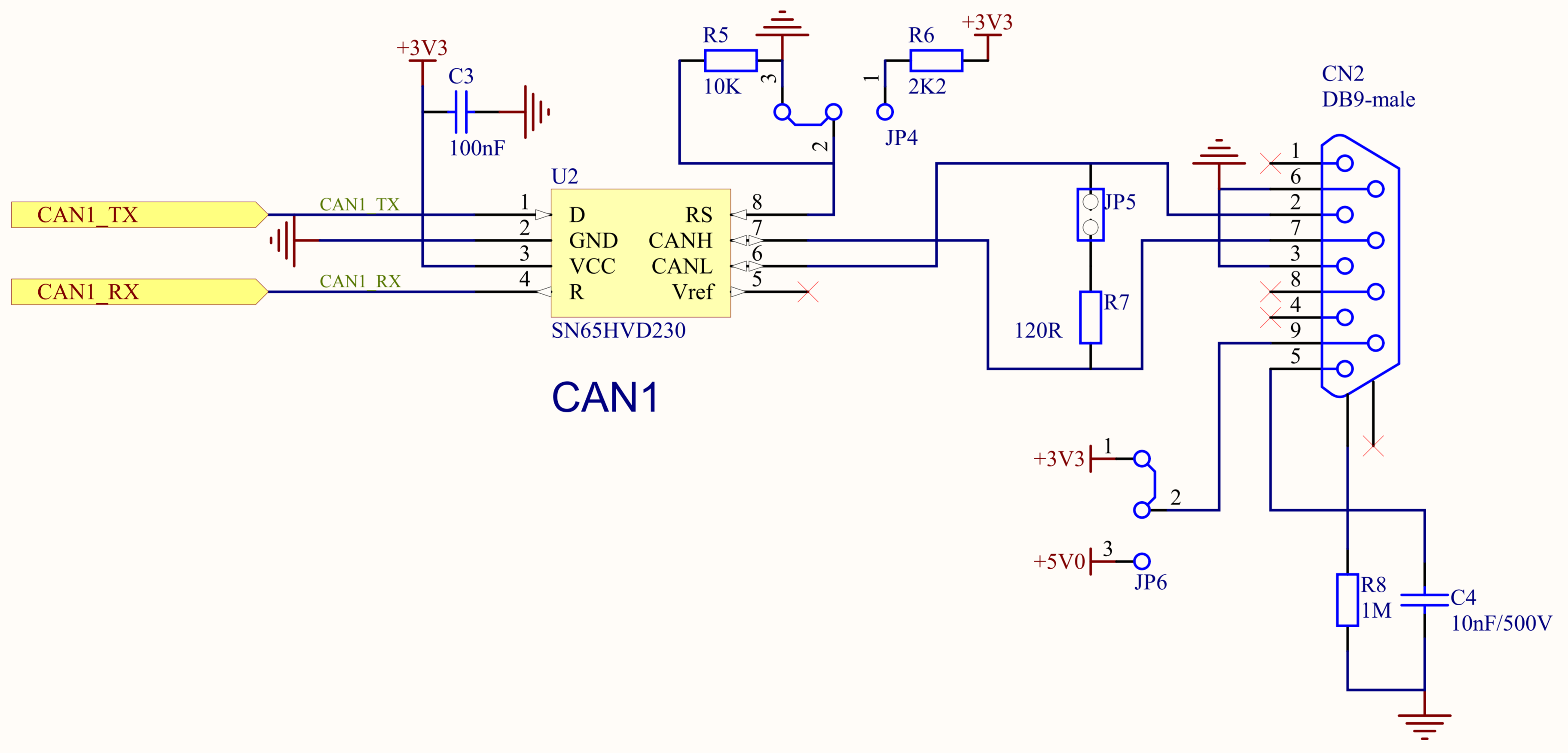


Boot Strap

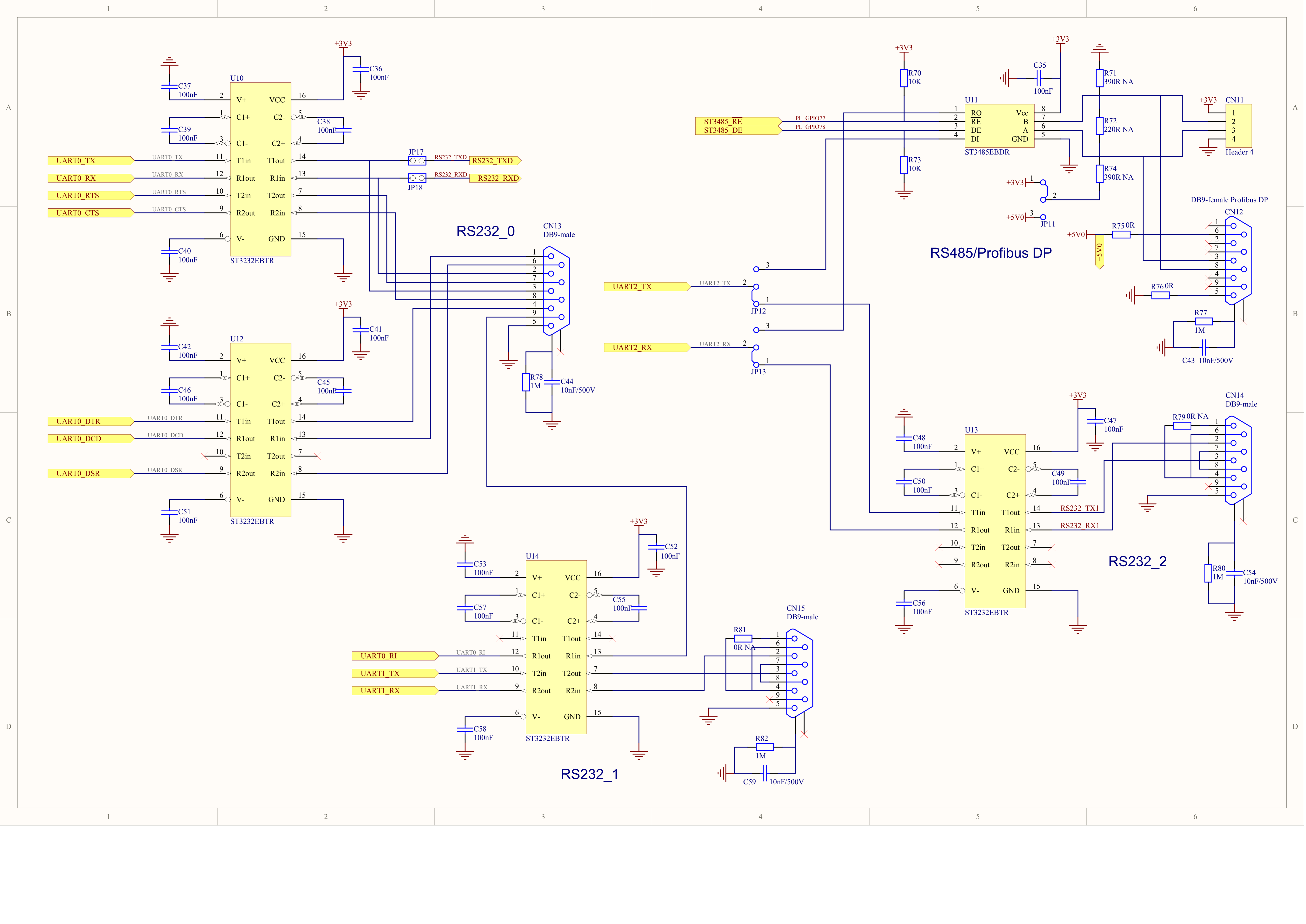




CAN0



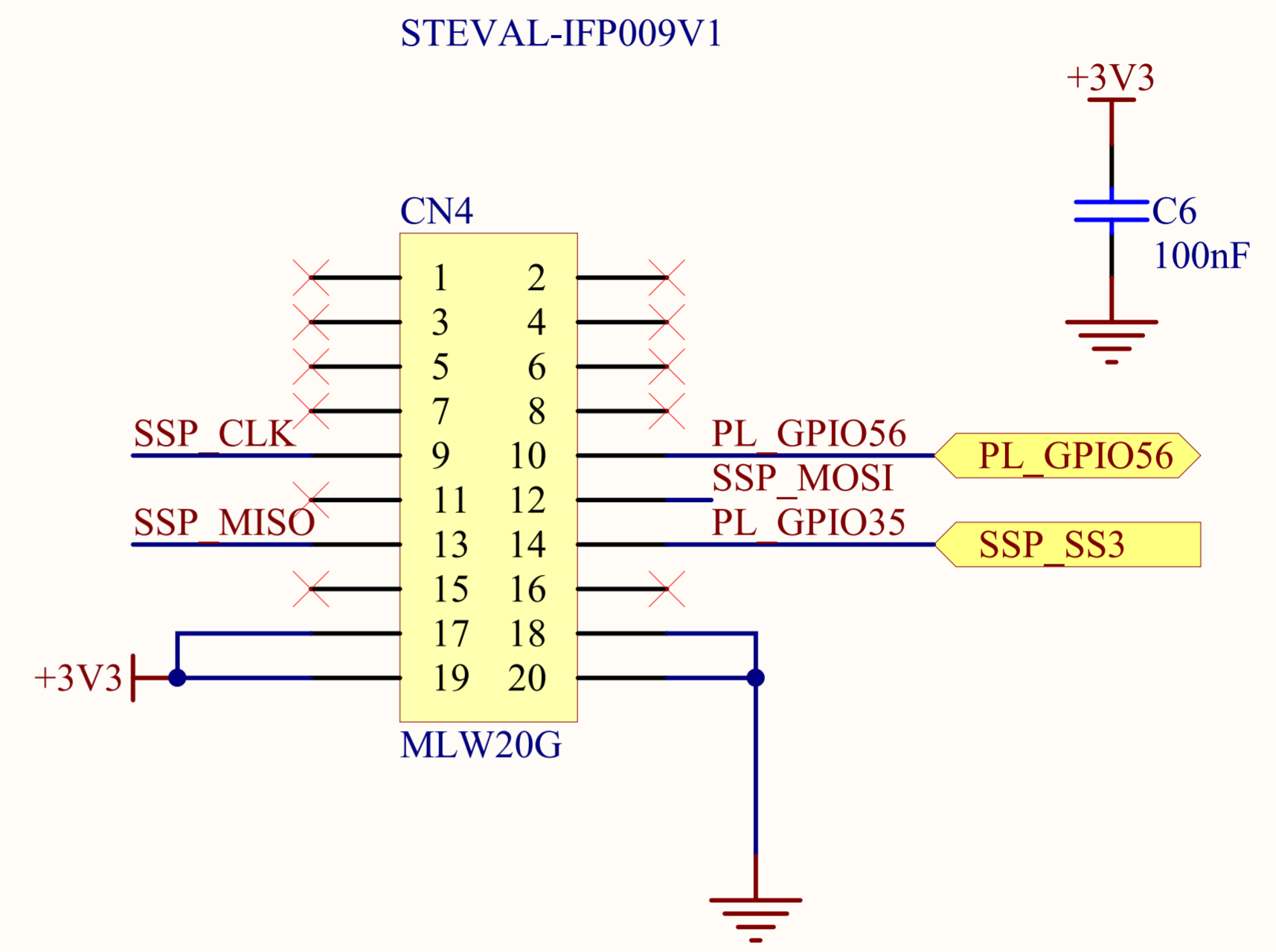
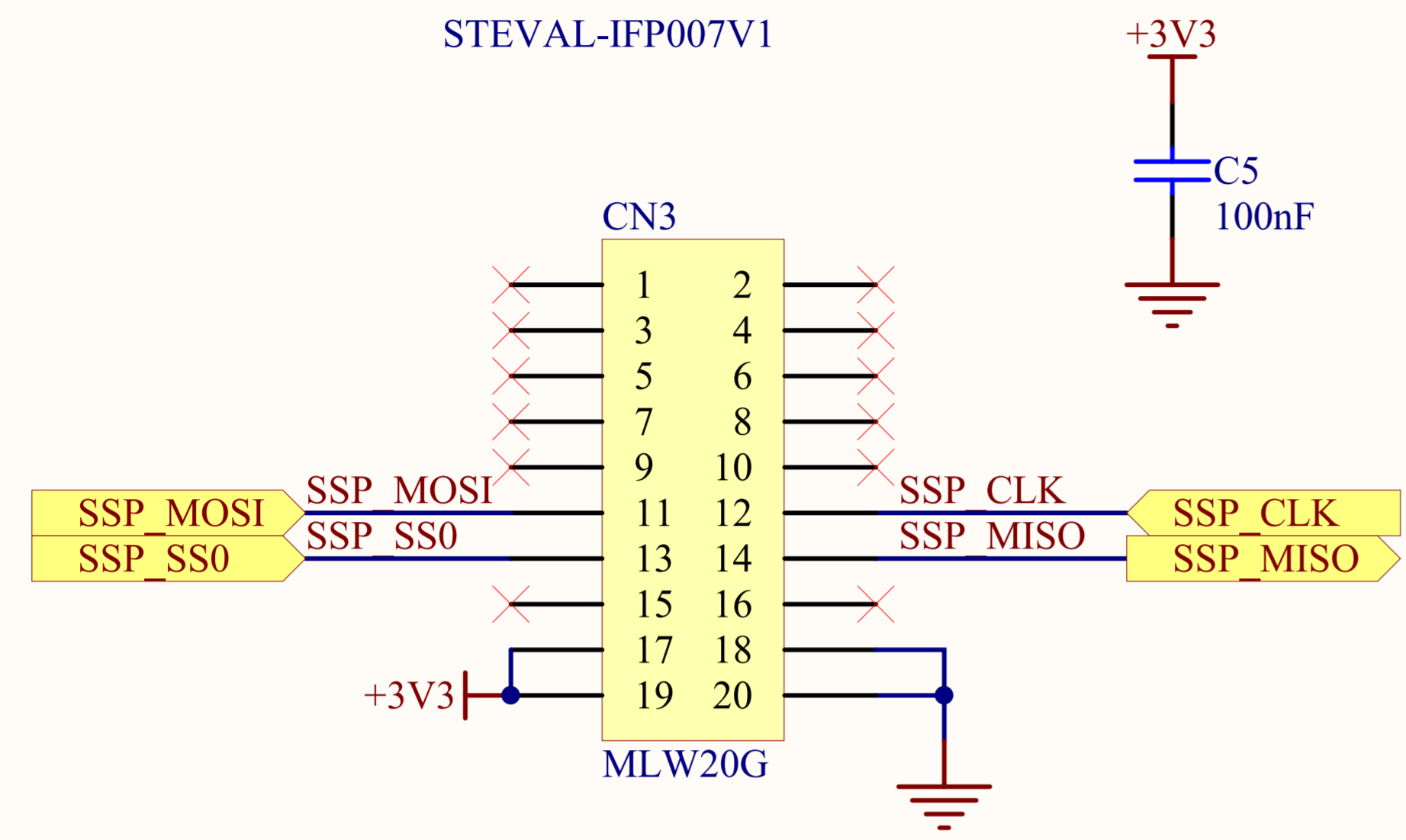
CAN1



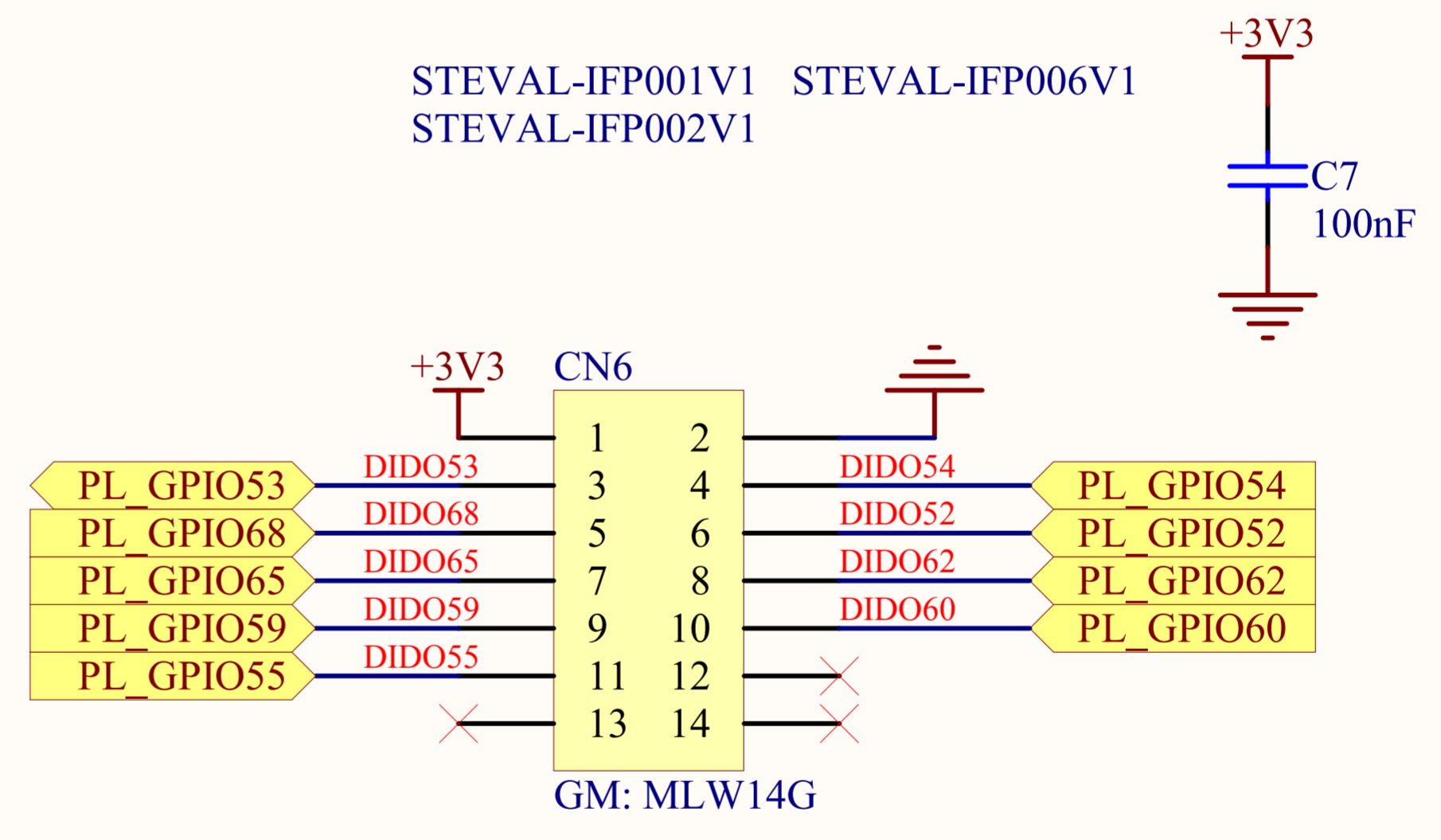
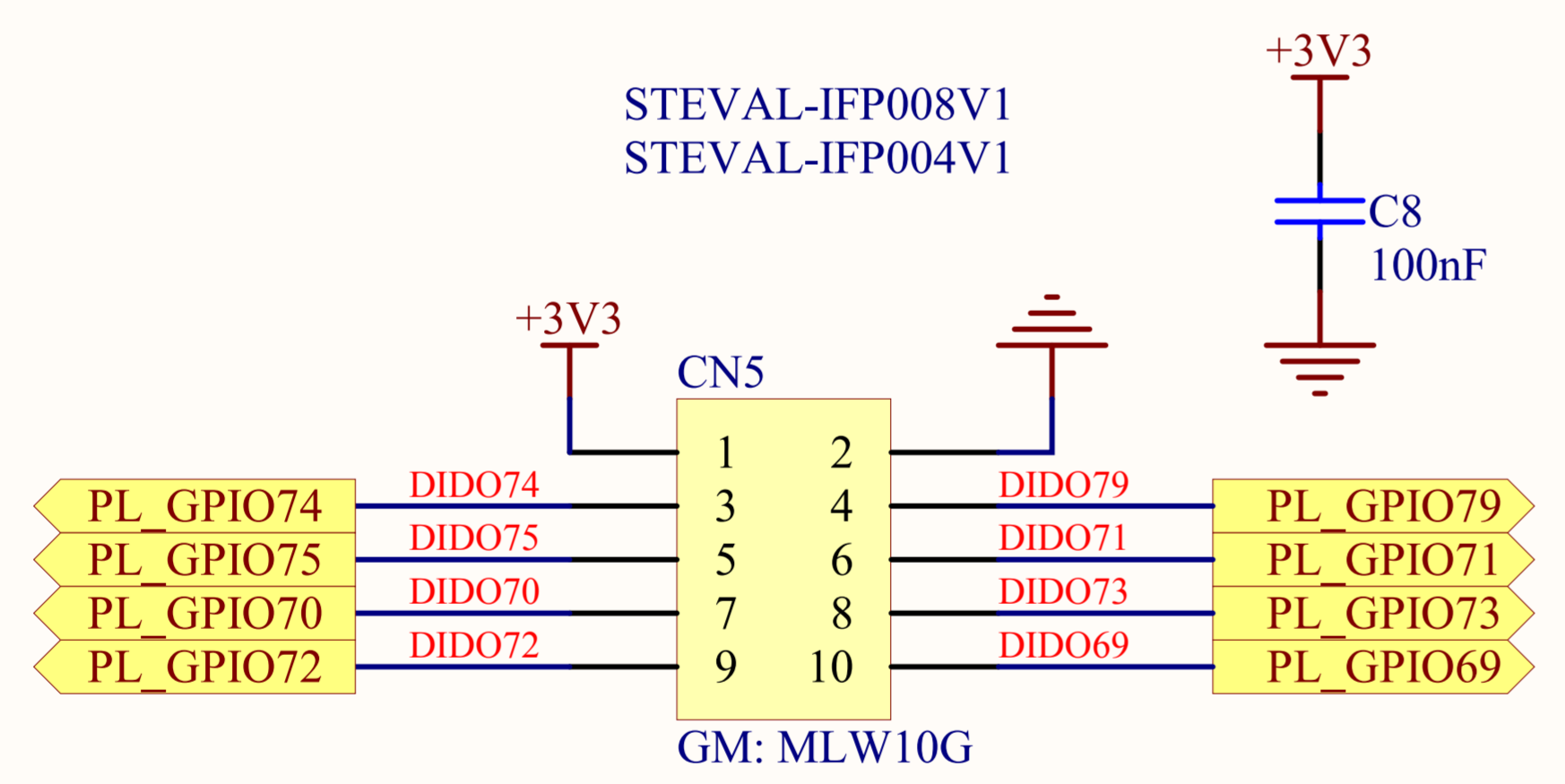
DIGITAL INPUTS (DI)

DIGITAL OUTPUTS (DO)

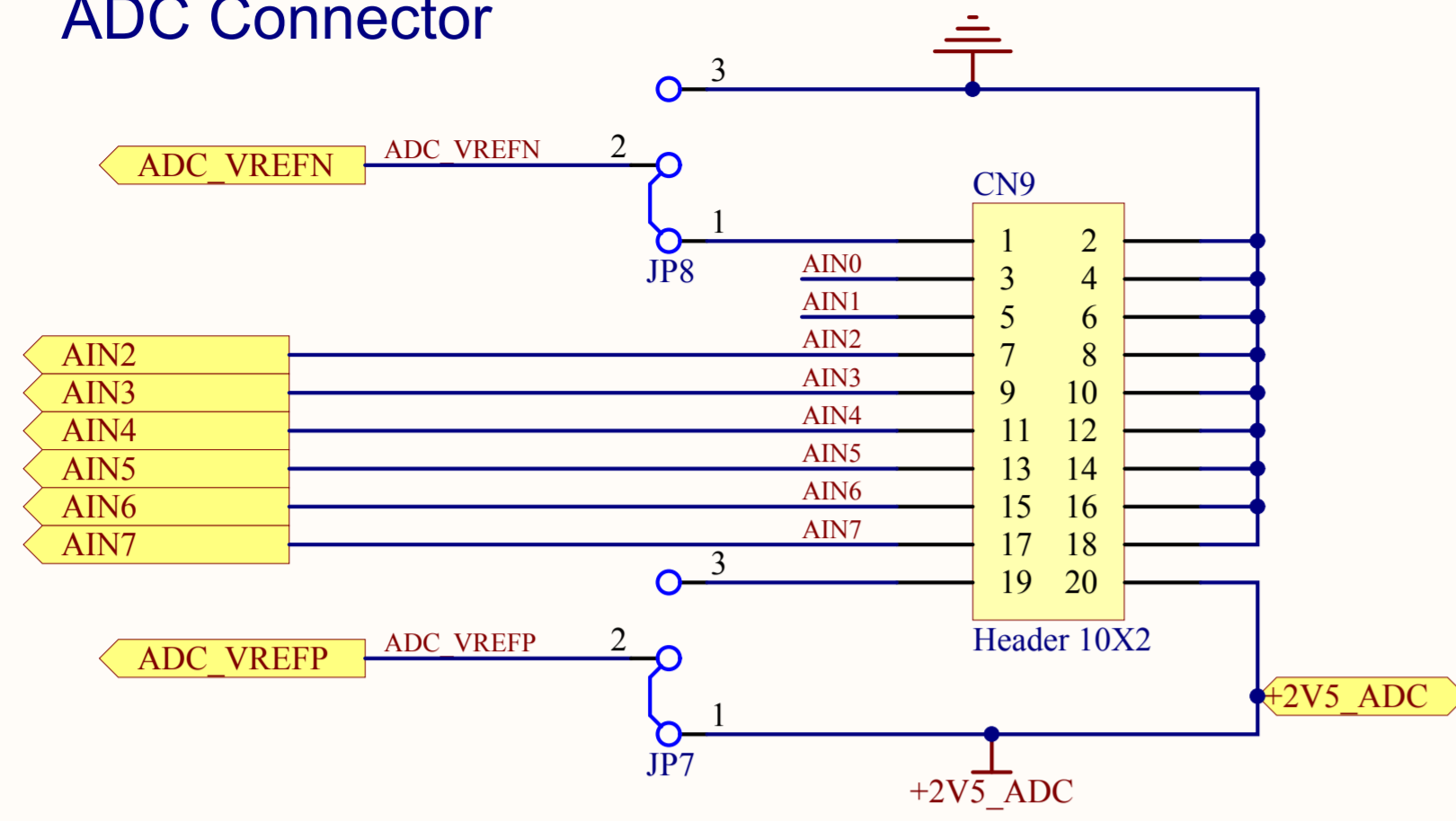
SERIAL



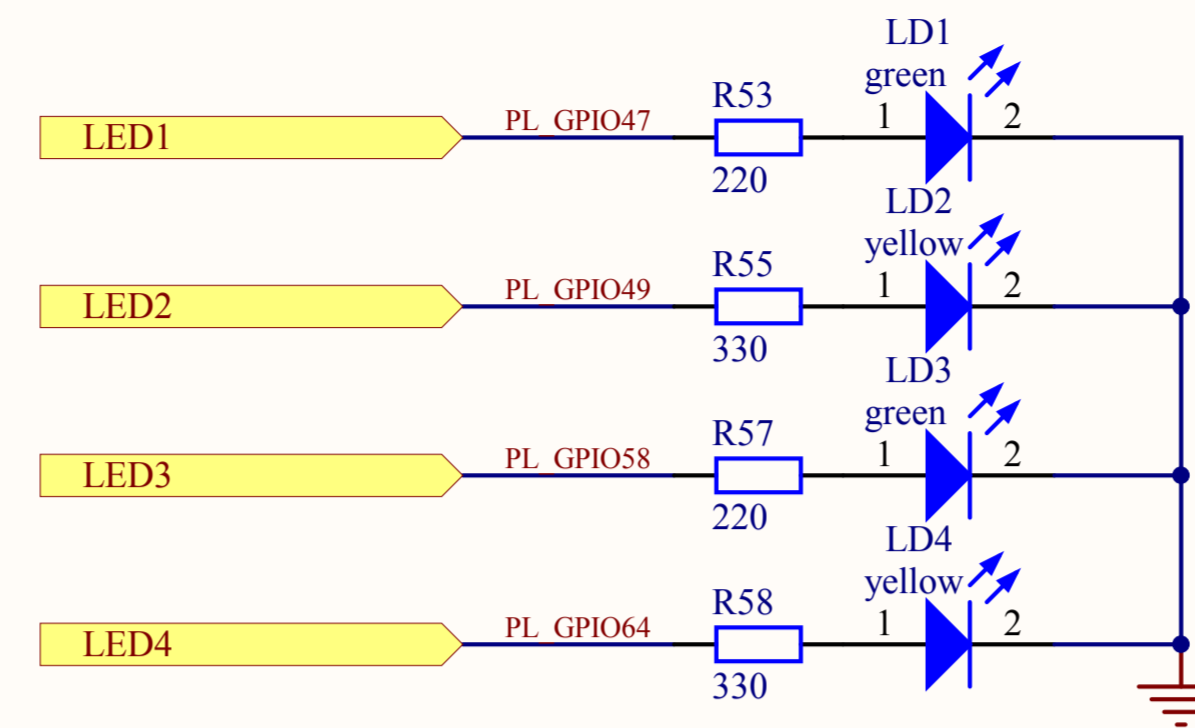
PARALLEL



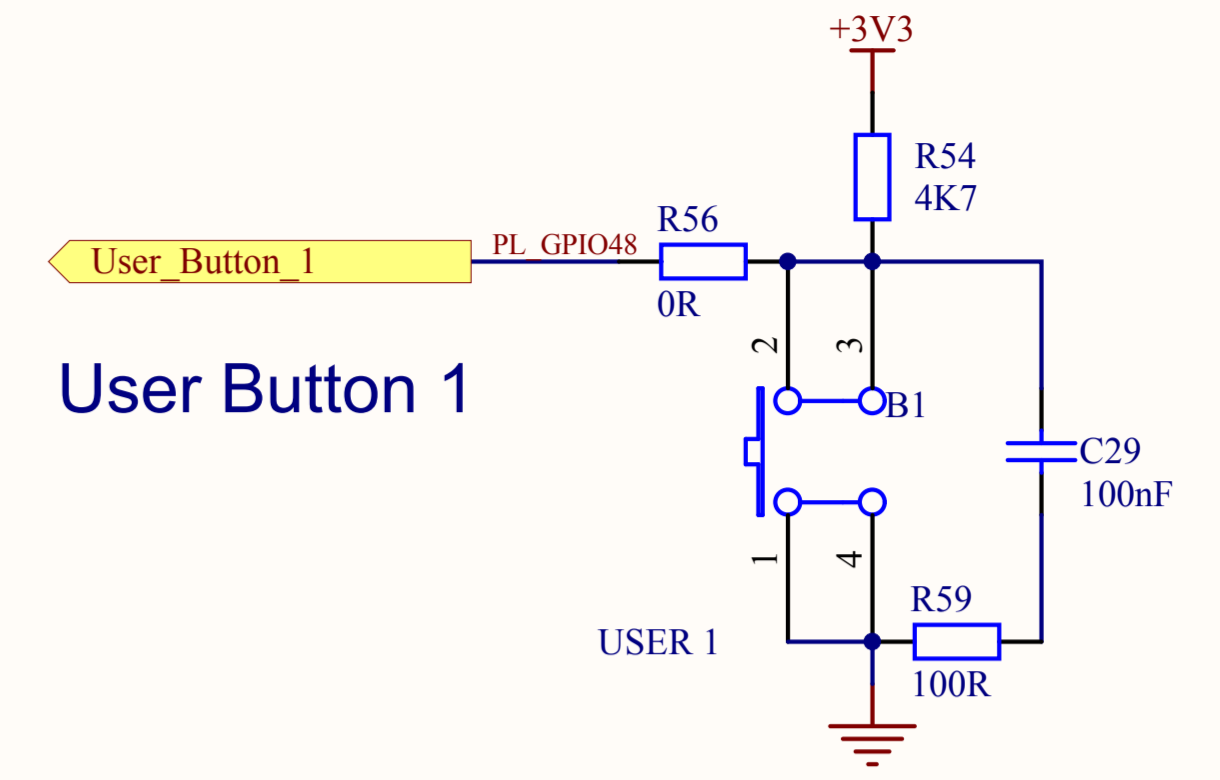
ADC Connector



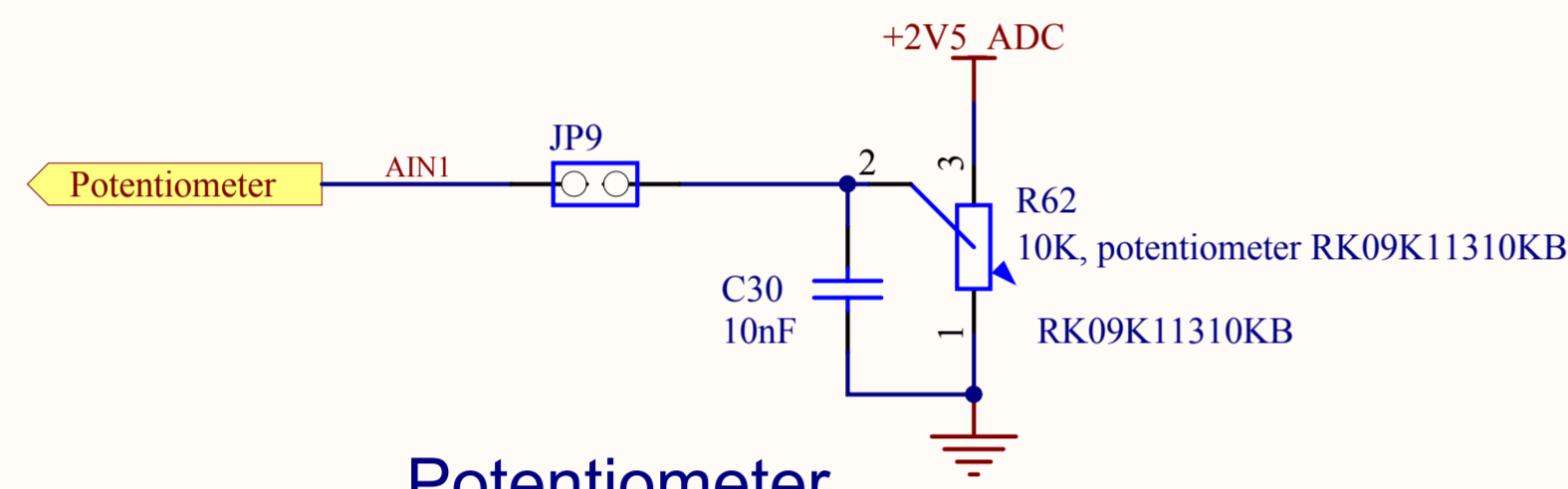
NOTE: LED colours and resistor values will be decided later



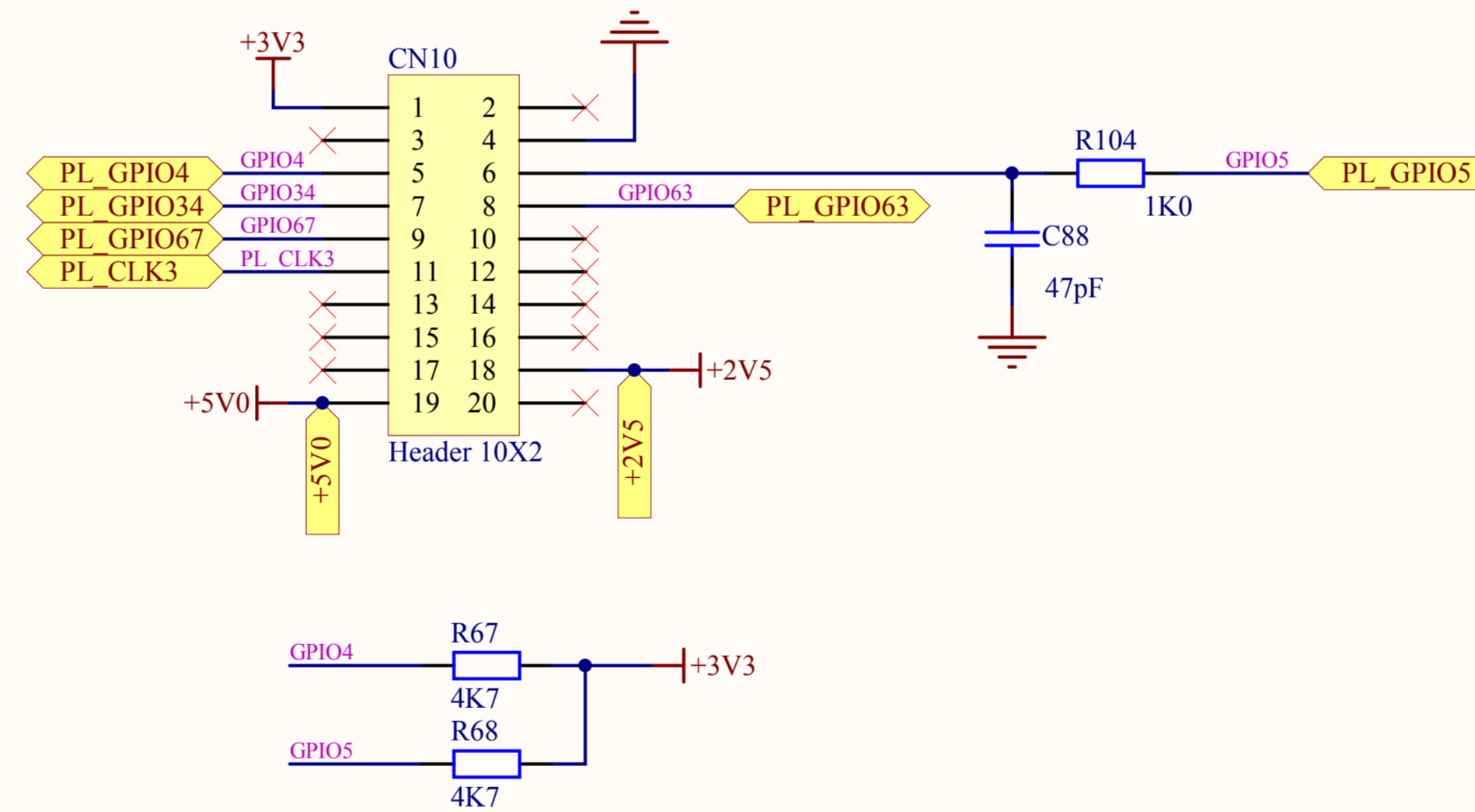
User Button 1



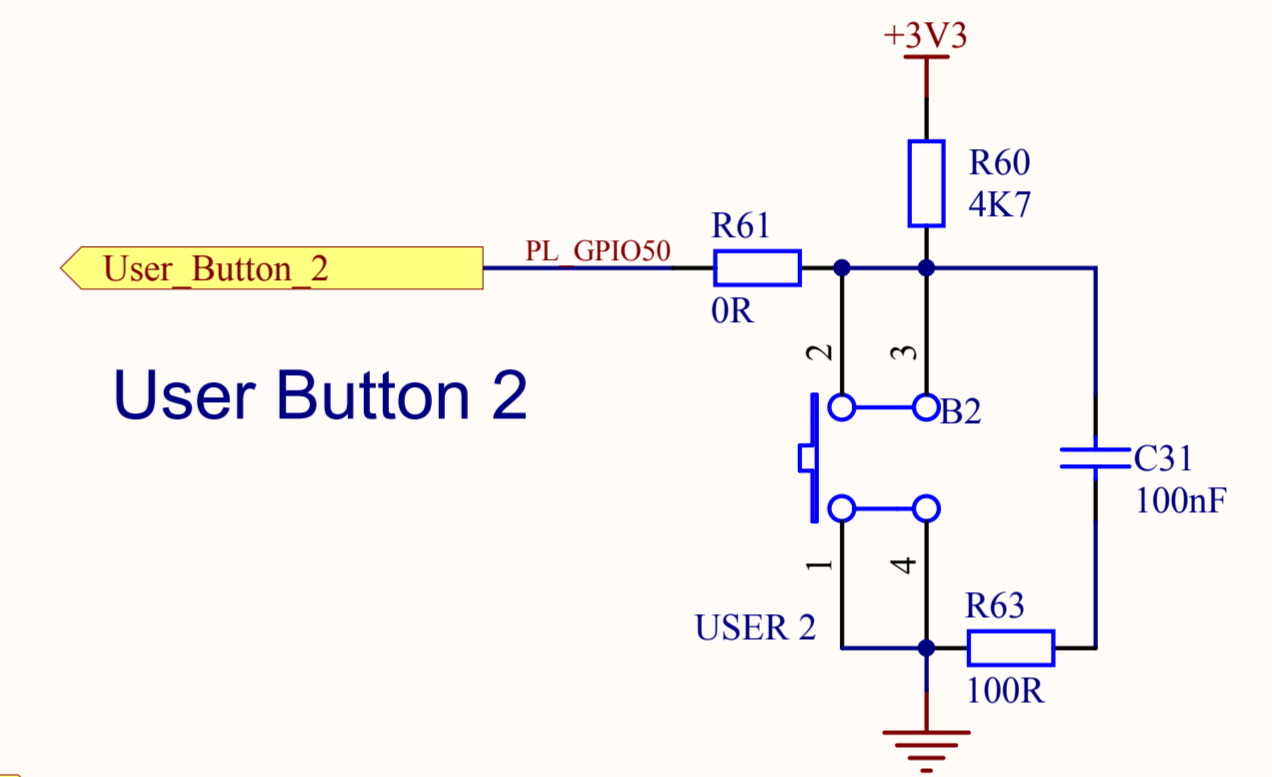
Potentiometer



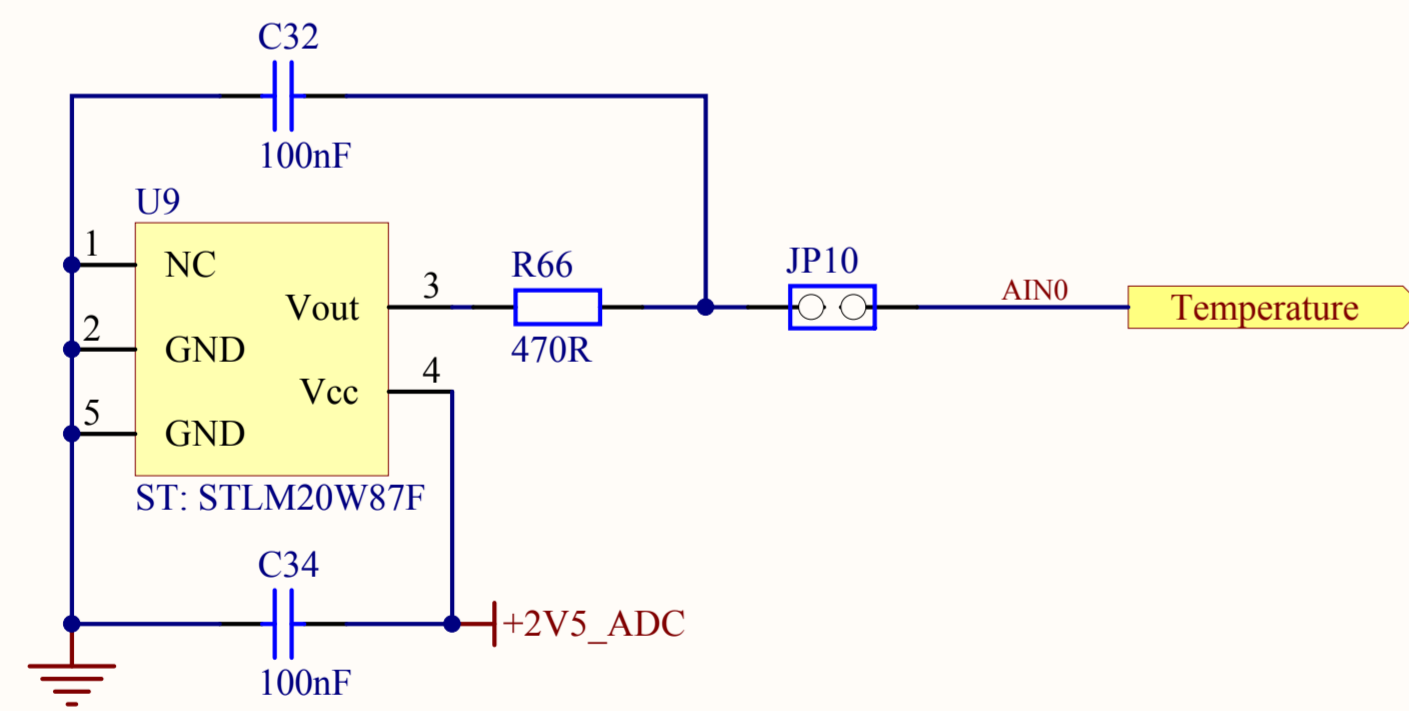
General Purpose Connector



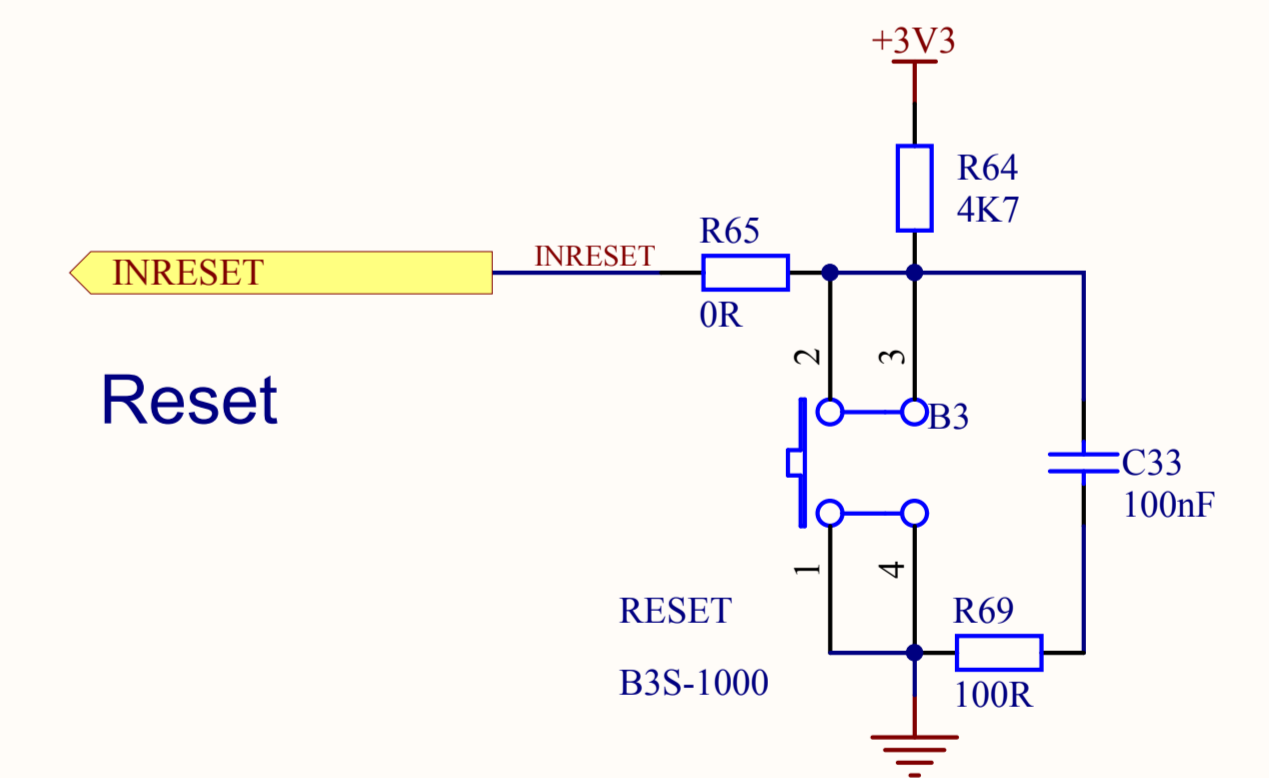
User Button 2

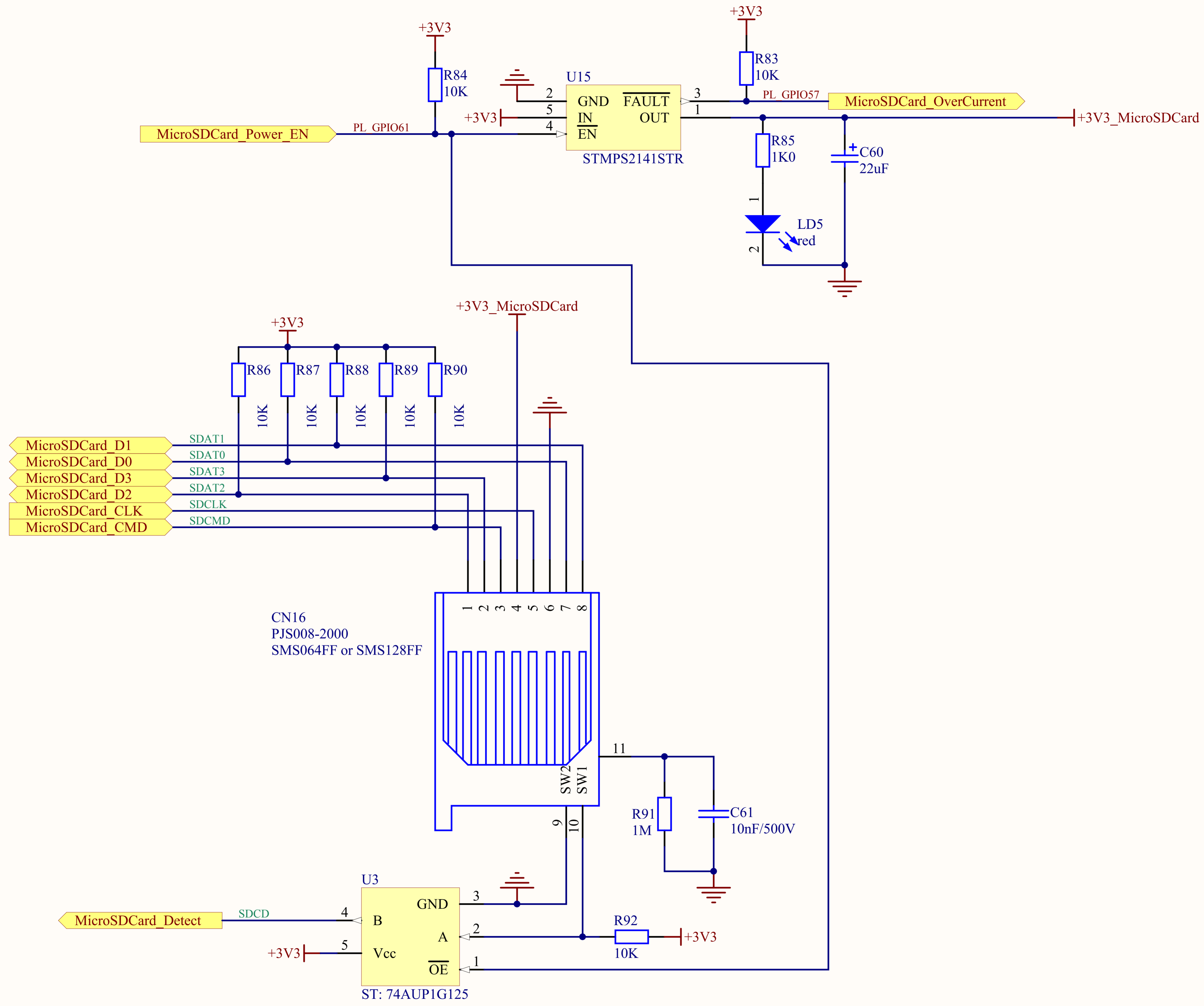


Temperature sensor

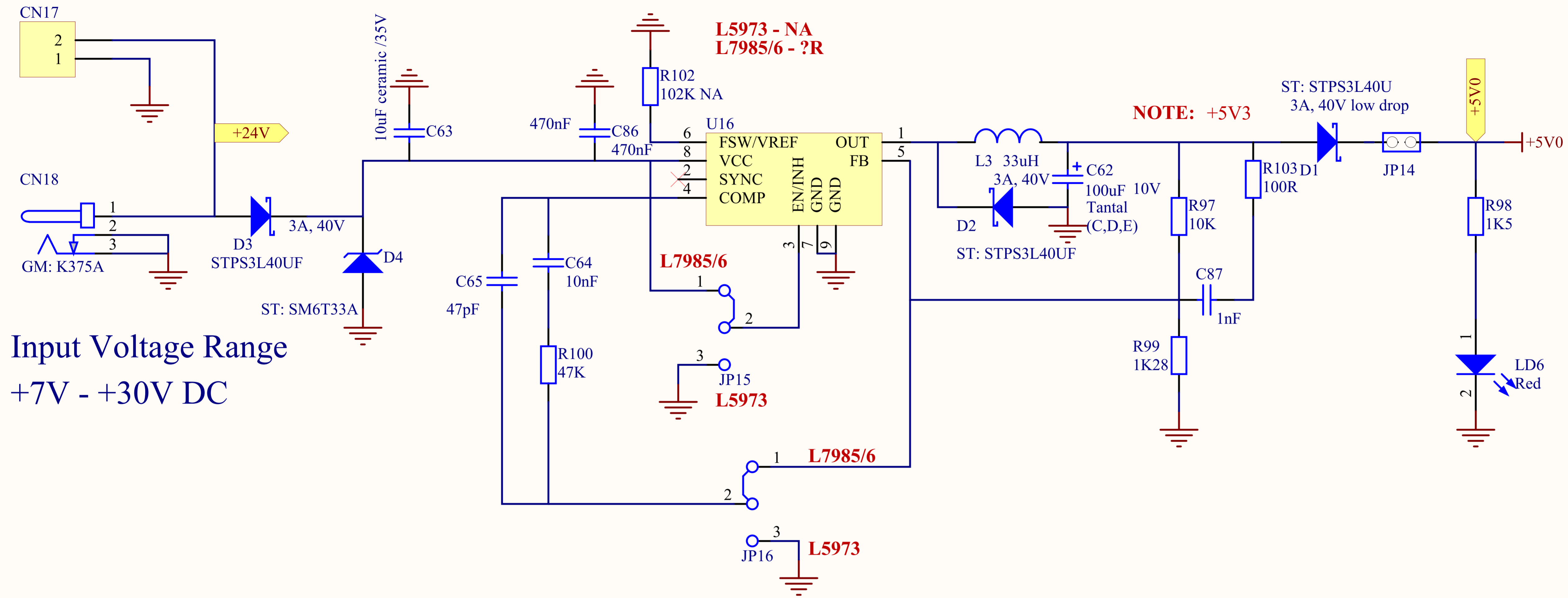


Reset

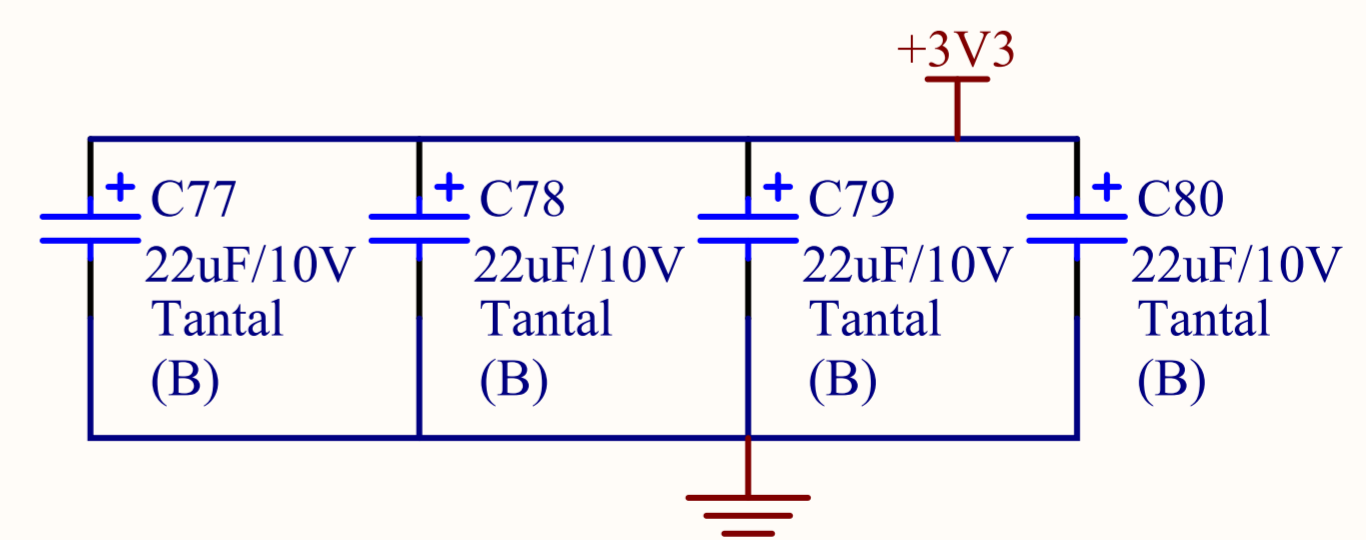
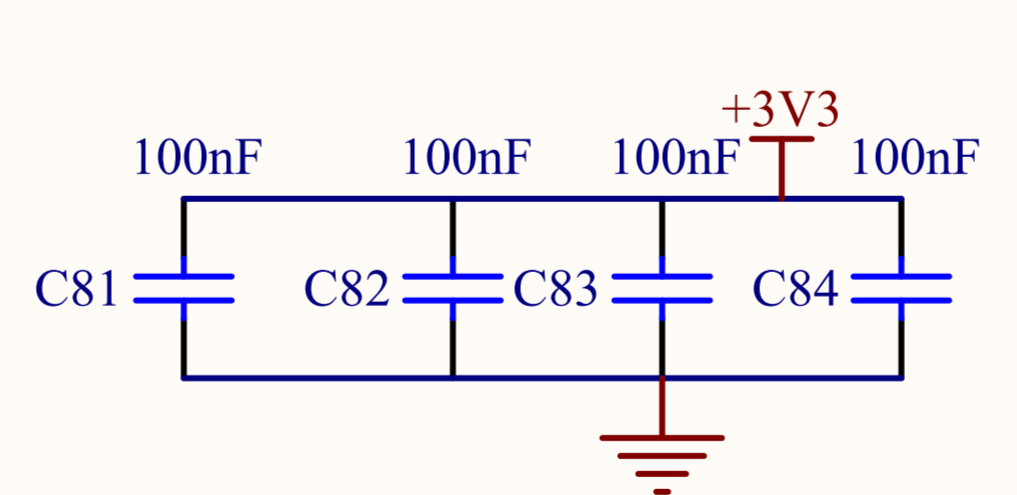
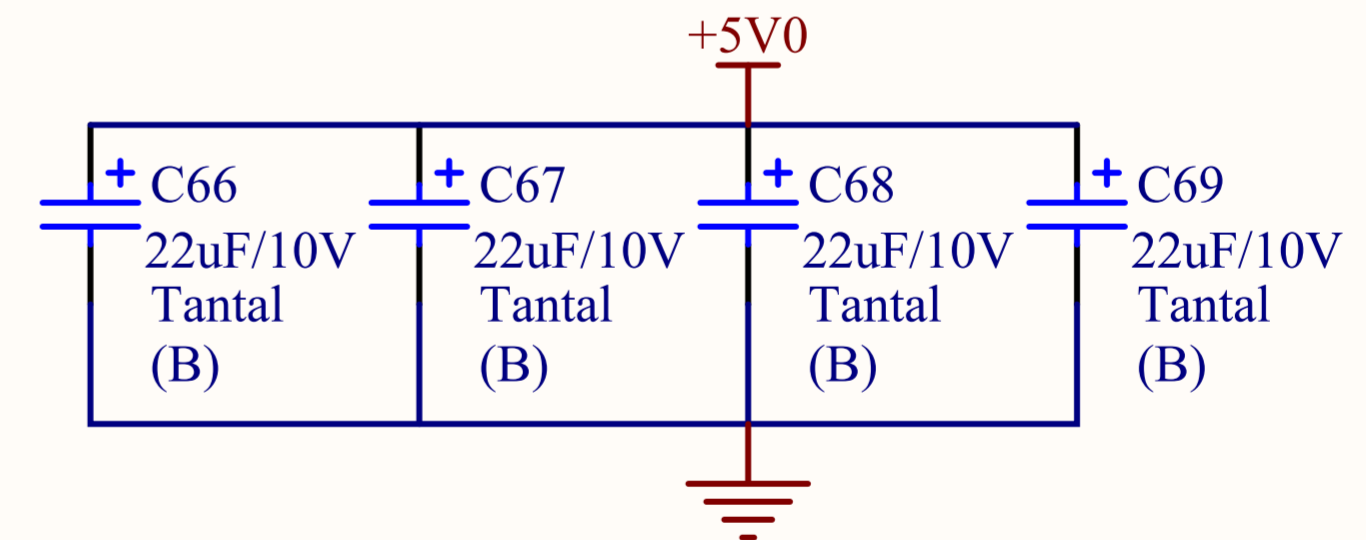
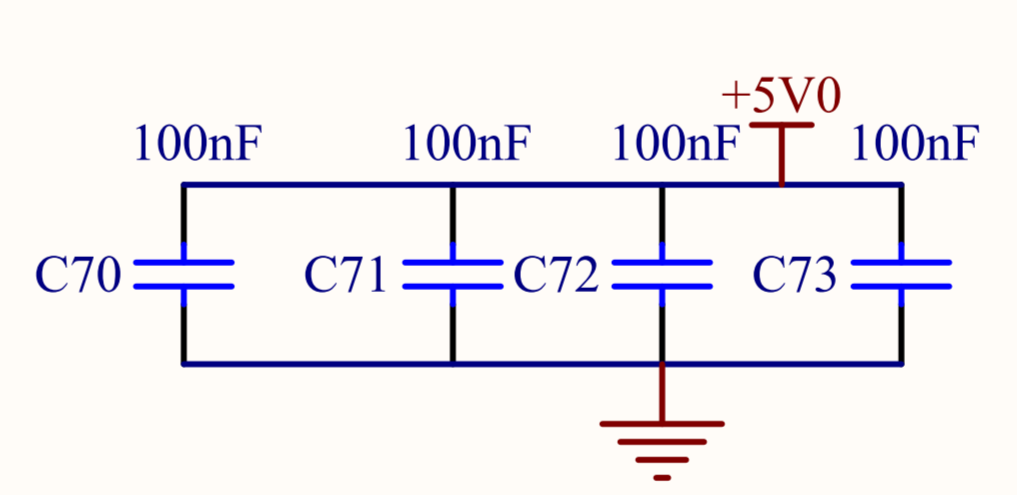
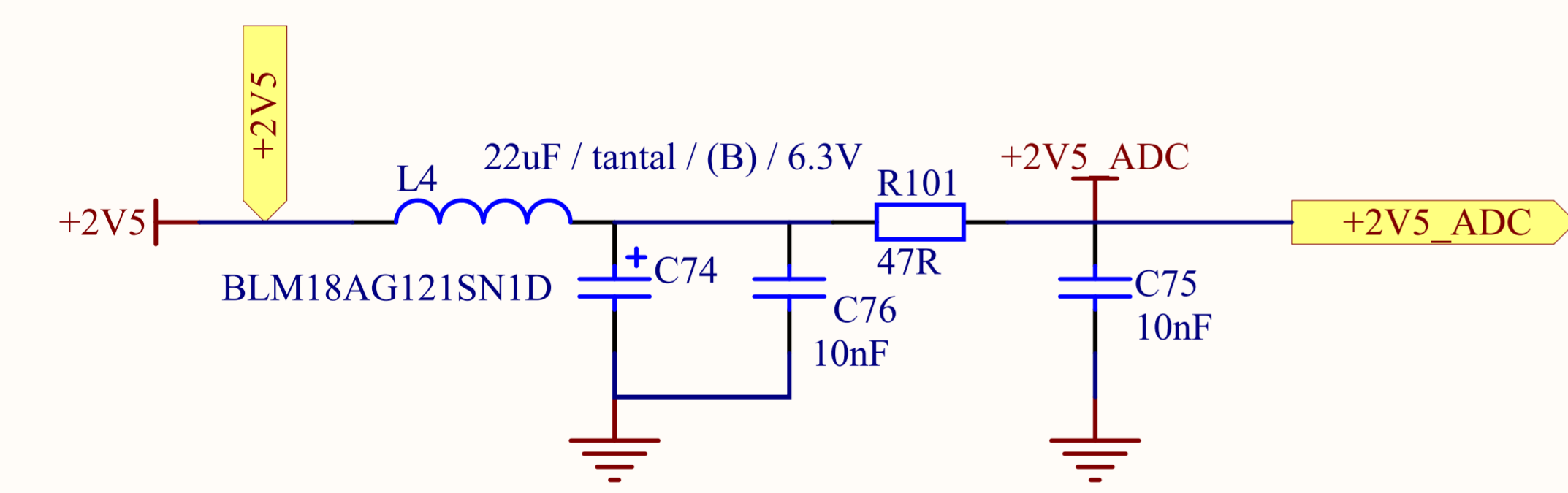




MKDS1.5-5.08 or GM: ARK103/2



Input Voltage Range
+7V - +30V DC



Schematic Revision History

Revision	Descriptions	Date
1.0	Initial release (internal release)	23 July 2009
1.1	DVIULC6-2P6 connection corrected + 2 devices added ADC_VREFP and ADC_VREFN exchanged on CN9 CN10 pins exchanged for better PCB routing TP1-TP7 removed C85 capacitor for Oscillator added Change of the schematic symbols for B1-B3 1.2V and 1.8V removed from J1 and CN10 DC/DC converter changed to allow using of L7985-6 DC/DC converter	29 July 2009 (PCB revision 1v0)
1.2	U5, U6 PHYs not in power down in default configuration U5 PHY reset pin connected to PL_GPIO66 and not to global board reset signal U6 PHY reset pin connected to PL_GPIO76 and not to global board reset signal CN16 microSD card SW2 pin connected to GND DVIULC6-2P6 Ethernet protections removed U5 MDIO/MDCK lines exchanged	15 October 2009 (PCB revision 1v1)
1.3	U3 Single buffer added to correct microSD card detect during system boot CN19 - change of the connector pin-out	9 December 2009 (PCB revision 1v2)

NOTE:

Cannot open file C:\Wrk\lib\st_logo.bmp	Project	SpearBASIC320	Board	MII Automation Mode Application board
	Title	Release note	Revision	1.3
	Date	9 December 2009	Code	Sheet of