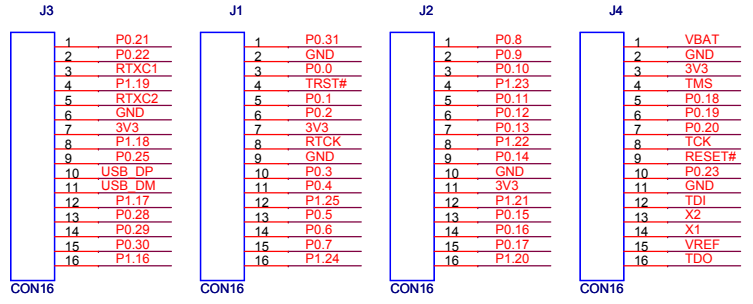
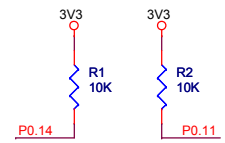
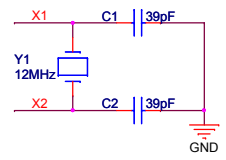
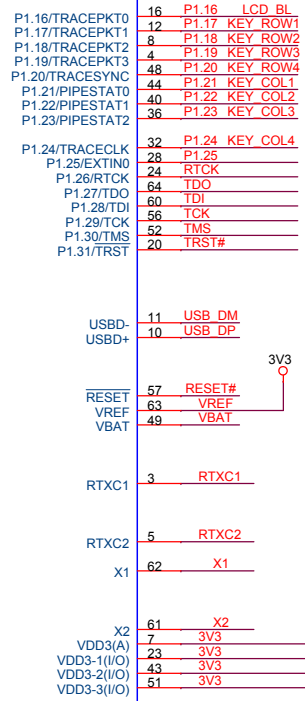
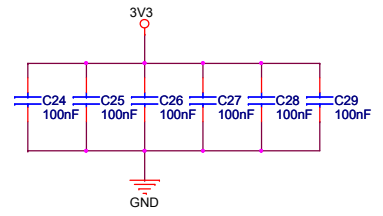
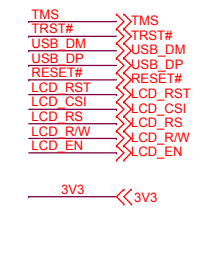
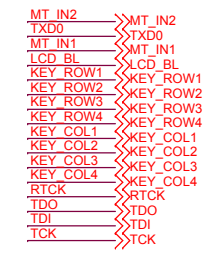
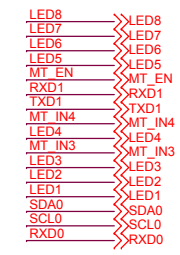
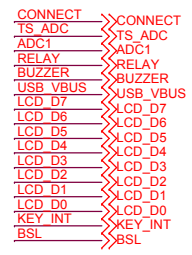


LPC214X



I/O EXPANSION PINS

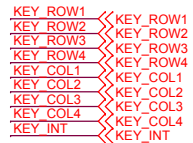
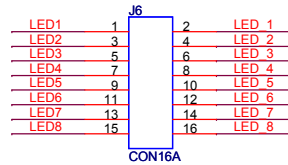
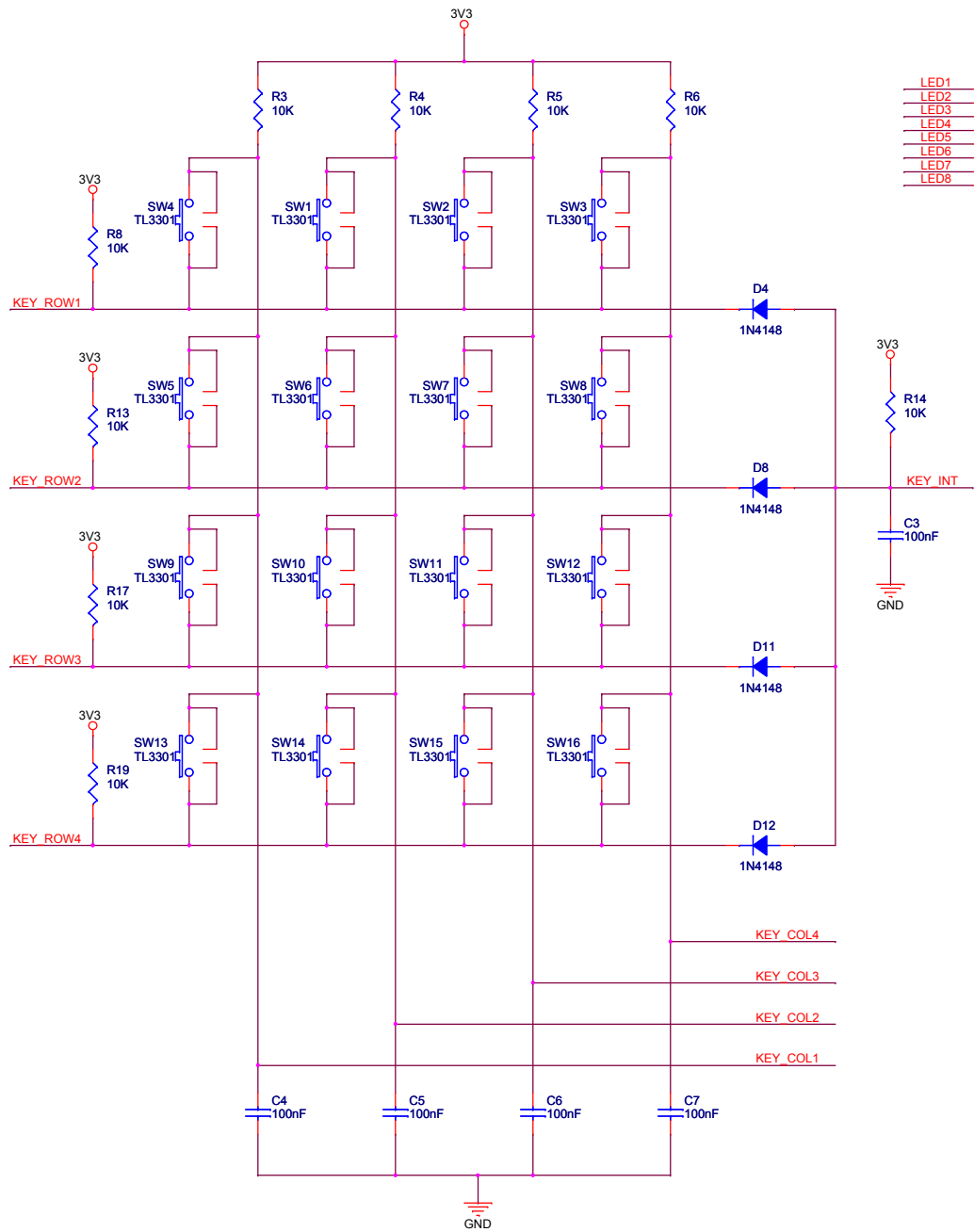


Title		
LPC214X		
Size	Document Number	Rev
B	1	1
Date:	Friday, December 18, 2009	Sheet 1 of 7

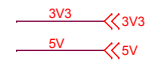
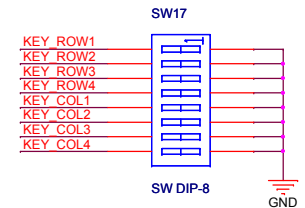
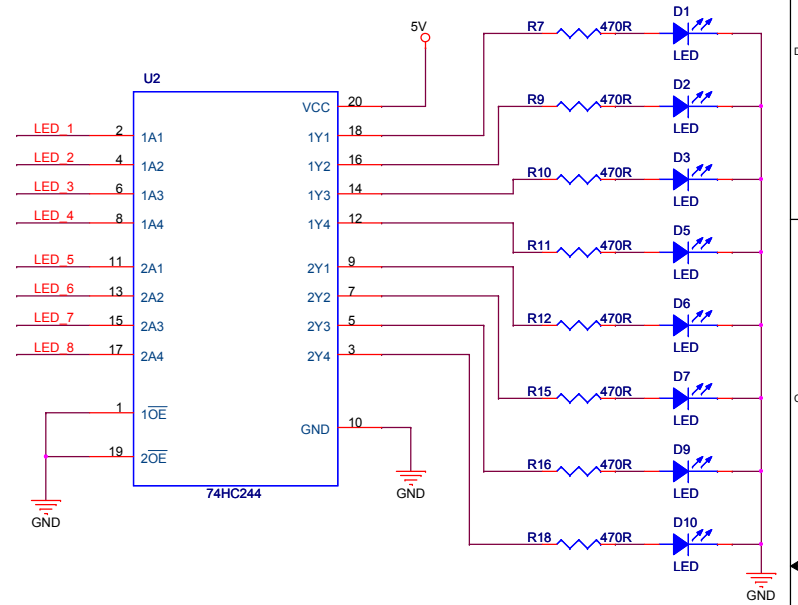
1. JUMPERS FOR BUZZER, ISP, ADC REMOVED
2. SWITCH JUMPERS DELETED
3. JUMPERS FOR LCD ADDED
4. LCD ENABLE SIGNAL GIVEN TO P0.10 EARLIER GIVEN TO P0.11
5. FOOTPRINT OF ON/OFF BUTTON CHANGED

Title		
<Title>		
Size	Document Number	Rev
A	<Doc>	<RevCode>
Date:	Saturday, November 28, 2009	Sheet 1 of 1

4X4 KEYPAD MATRIX



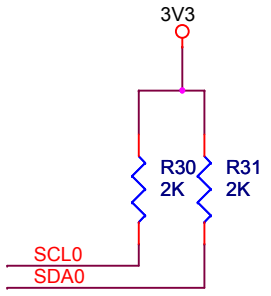
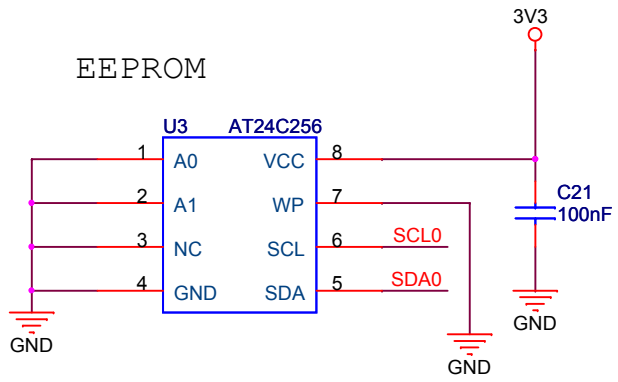
8 USER INTERFACE LEDs



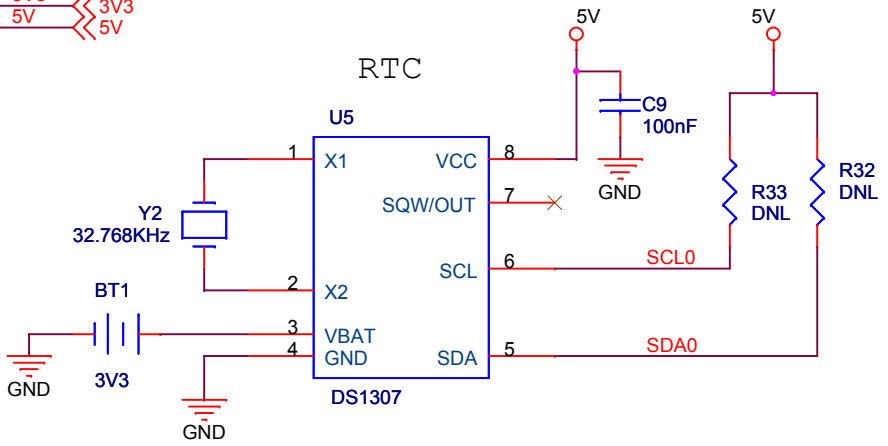
Title		
KEYPAD,LED,PUSH BUTTON		
Size	Document Number	Rev
B	<Doc>	<RevCode>
Date:	Saturday, November 28, 2009	Sheet 2 of 7

I2C INTERFACE CIRCUITS

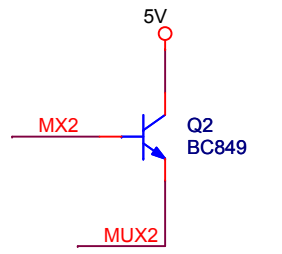
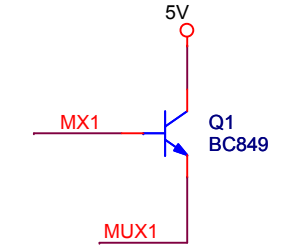
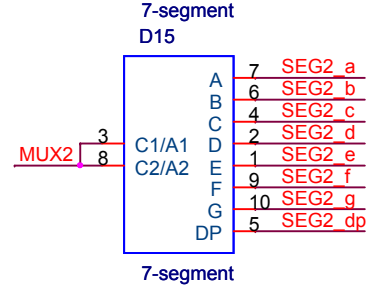
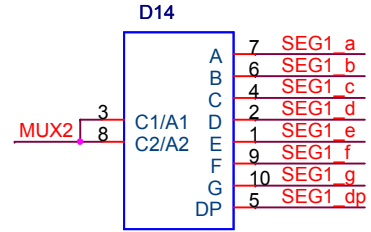
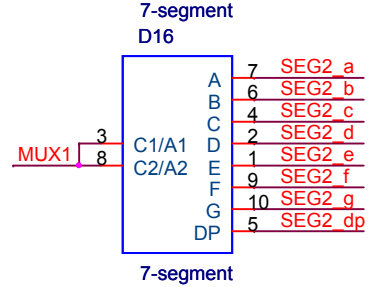
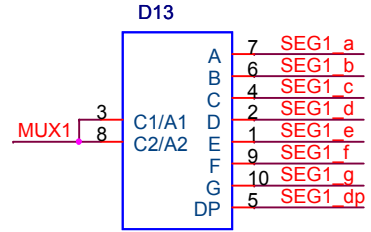
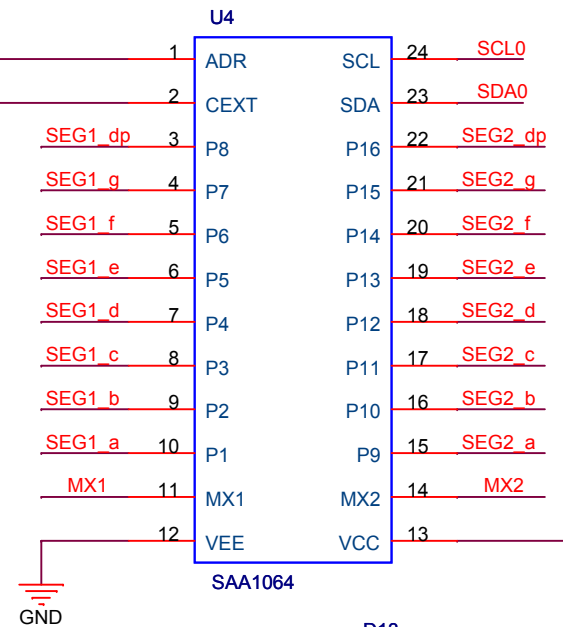
EEPROM



RTC

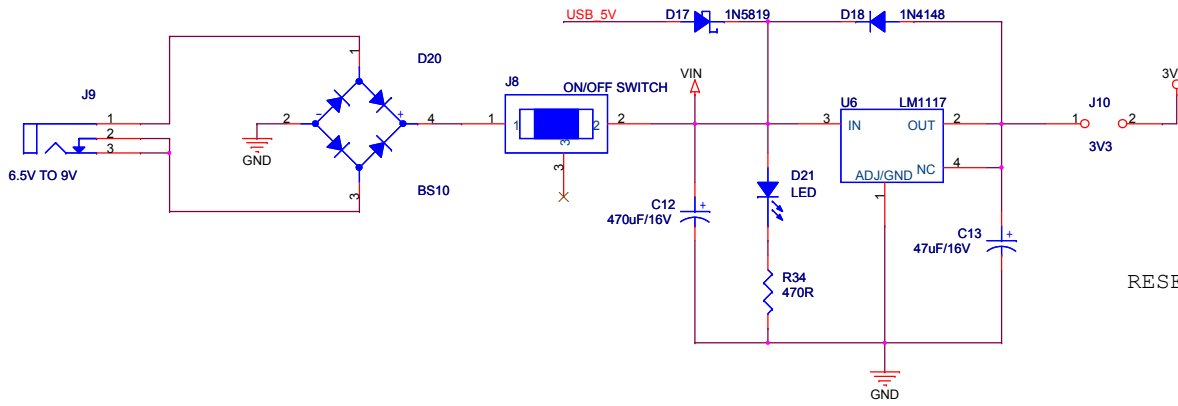


7-SEGMENT DISPLAY

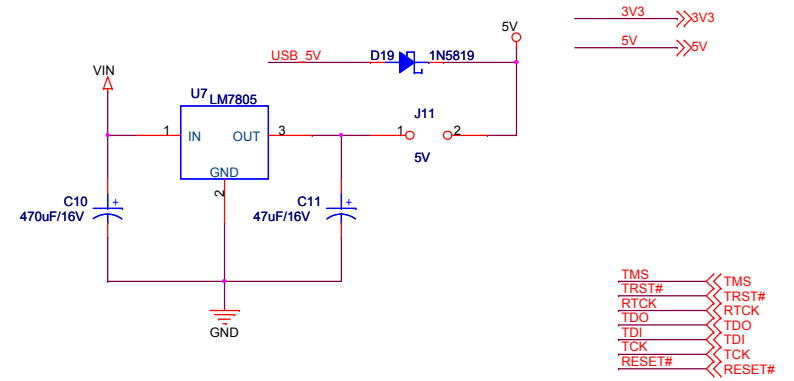


Title		
I2C		
Size	Document Number	Rev
A	<Doc>	<RevCode>
Date:	Friday, December 18, 2009	Sheet 3 of 7

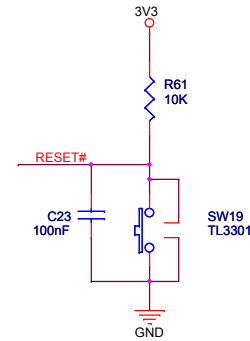
3.3V POWER SUPPLY



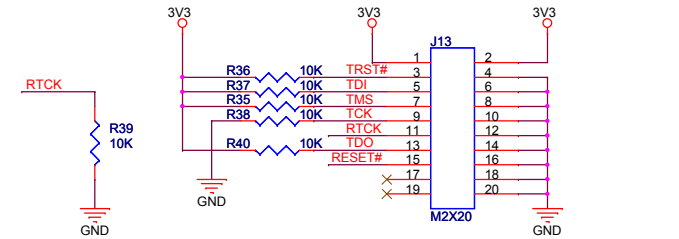
5V POWER SUPPLY



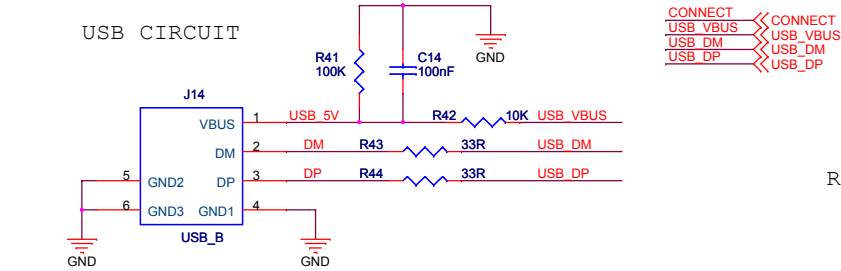
RESET CIRCUIT



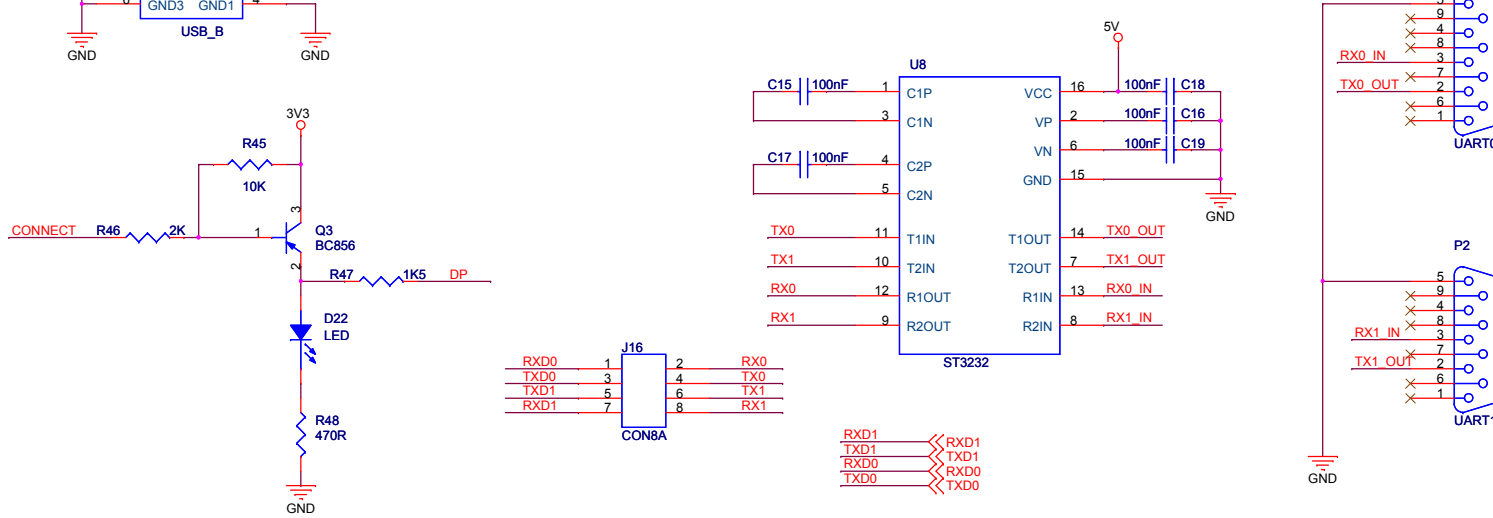
JTAG DEBUGGER



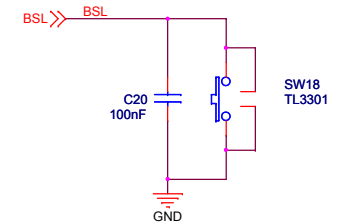
USB CIRCUIT



RS-232 INTERFACE

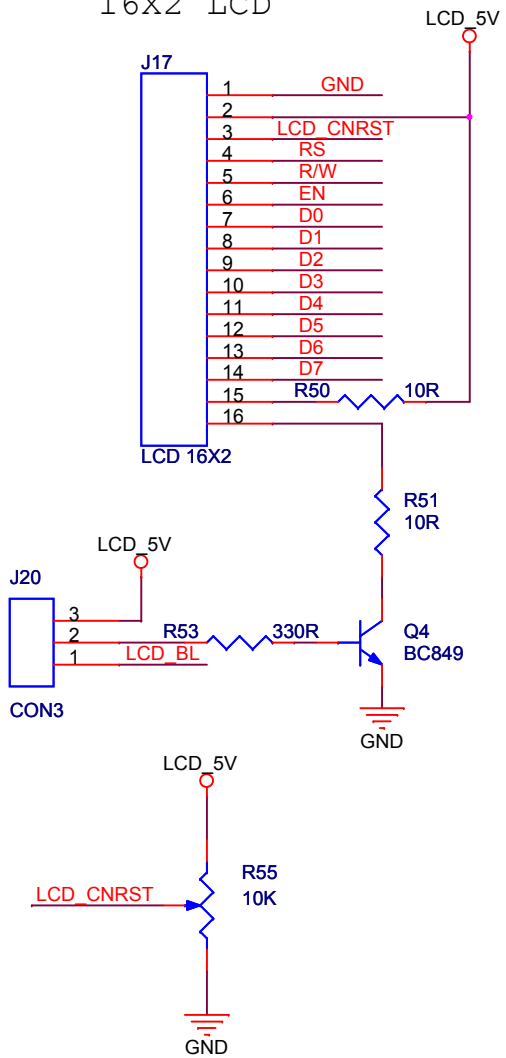


ISP INTERFACE

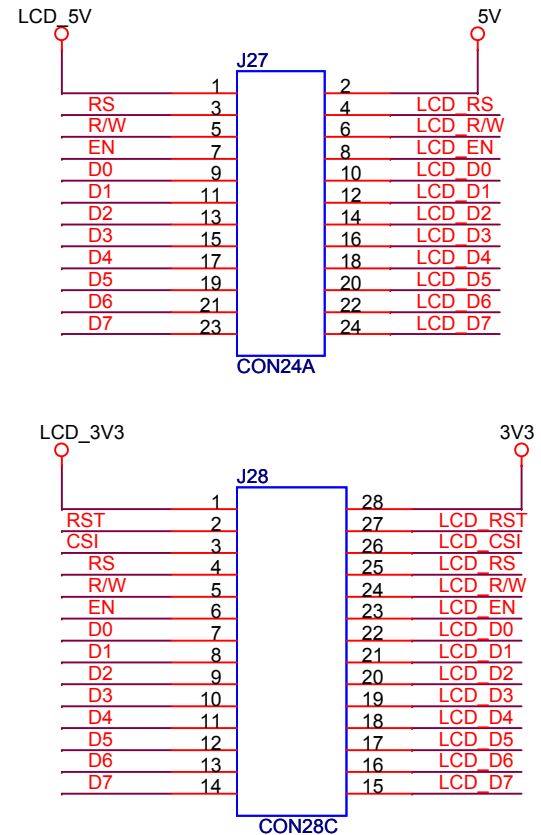


Title		
POWER,UART,JTAG,USB		
Size	Document Number	Rev
B	<Doc>	<RevCode>
Date:	Friday, December 18, 2009	Sheet 4 of 7

16X2 LCD

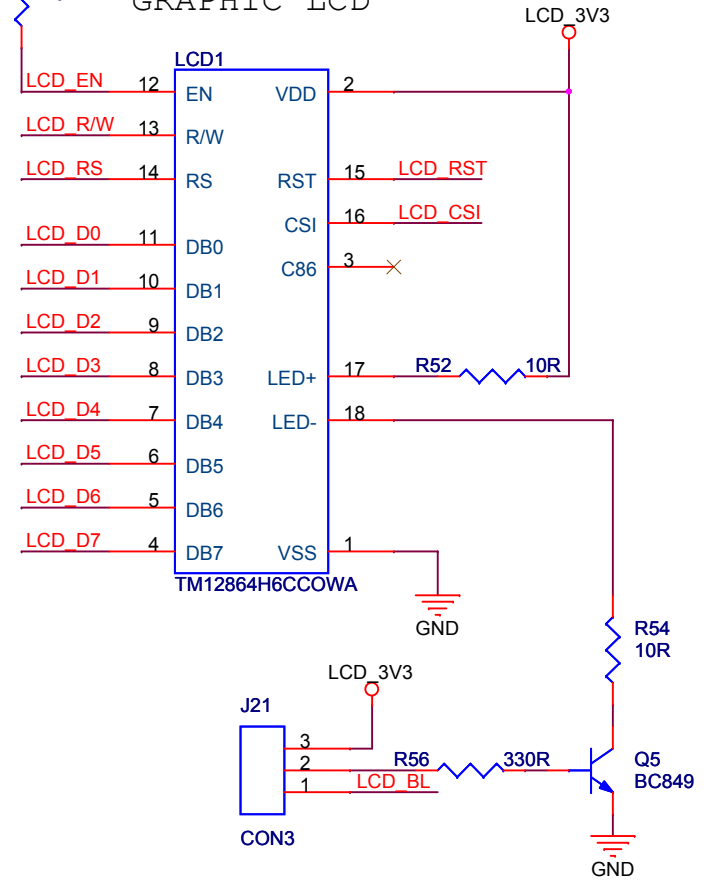


JUMPERS TO CONTROL INDIVIDUAL LCDs

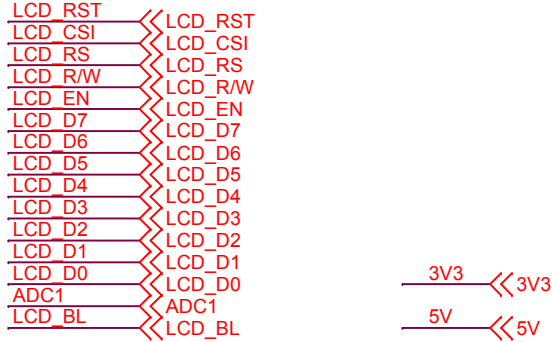
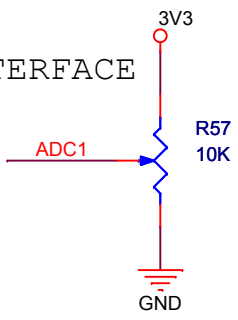


LCD_3V3

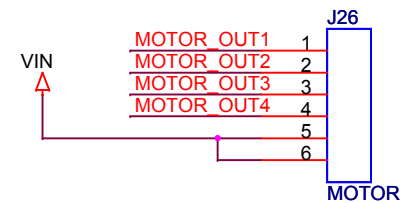
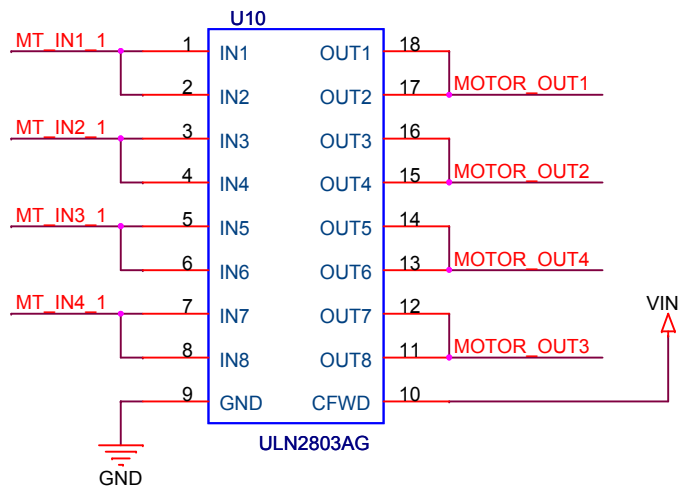
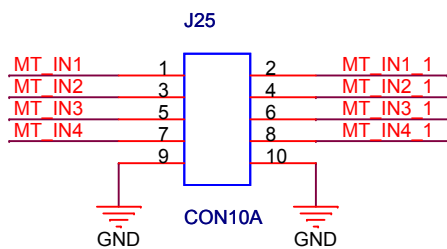
GRAPHIC LCD



ADC INTERFACE



Title		
16X2 LCD,GRAPHIC LCD,ADC		
Size A	Document Number <Doc>	Rev 1
Date:	Saturday, November 28, 2009	Sheet 5 of 7



Title <Title>		
Size A	Document Number <Doc>	Rev <RevCode>
Date:	Saturday, November 28, 2009	Sheet 7 of 7