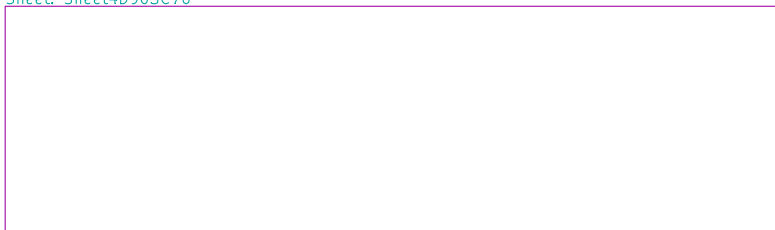


The mX-LPC1343 schematic and mX-LPC1343-Link schematic are included as two separate pages

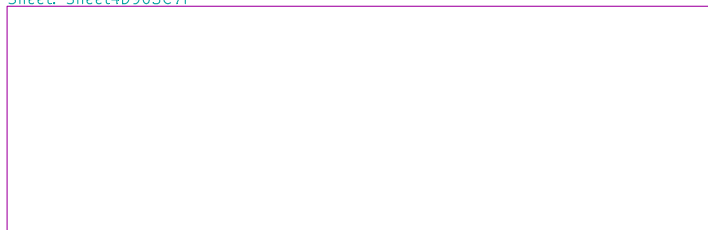
Sheet: Sheet4D903C70



File: mX-LPC1343-S.sch

mX-LPC1343 Schematic

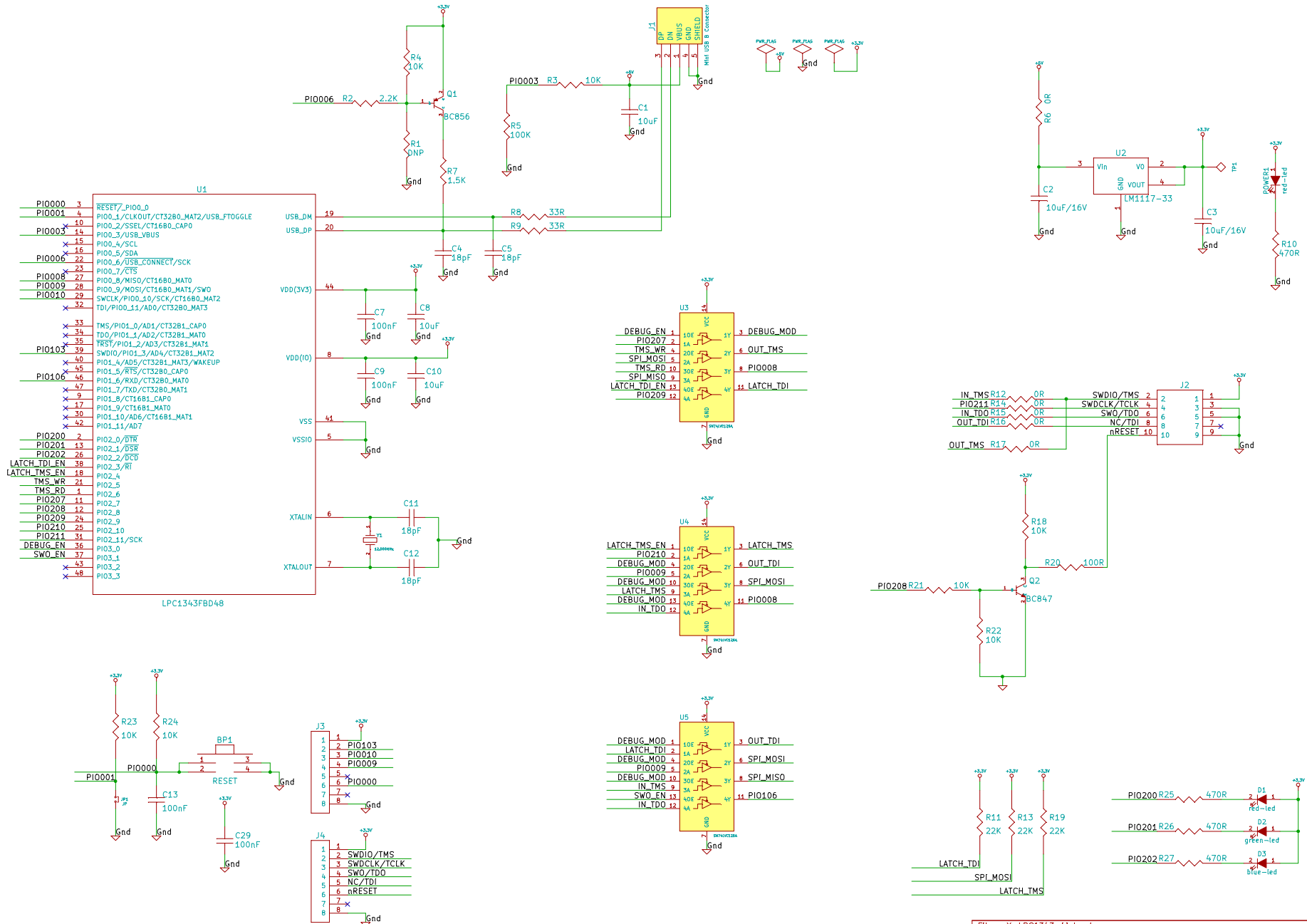
Sheet: Sheet4D903C7F



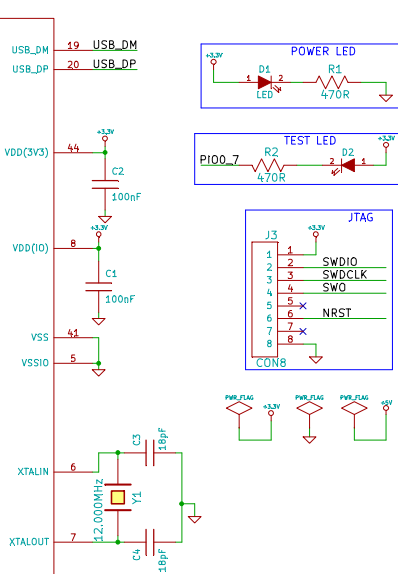
File: mX-LPC1343-Link.sch

mX-LPC1343-Link Schematic

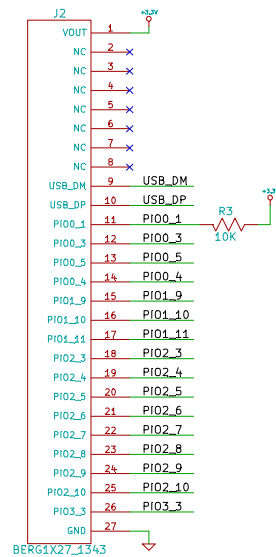
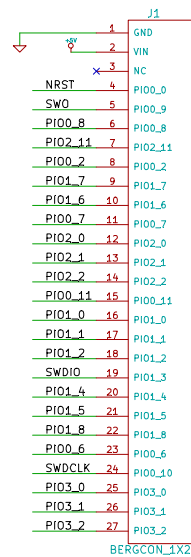
File: mX-LPC1343.sch		
Sheet: /		
Title:		
Size: A4	Date: 29 apr 2011	Rev:
KiCad E.D.A. eeschema (2010-05-05 BZR 2356)-stable		Id: 1/3



LPC1343FBD48	
NRST	3
PI00_1	6
PI00_2	10
PI00_3	14
PI00_4	15
PI00_5	16
PI00_6	22
PI00_7	23
PI00_8	27
SWO	28
SWDCLK	29
PI00_11	32
PI01_0	33
PI01_1	34
PI01_2	35
SWDIO	39
PI01_4	40
PI01_5	45
PI01_6	46
PI01_7	47
PI01_8	9
PI01_9	17
PI01_10	30
PI01_11	42
PI02_0	2
PI02_1	13
PI02_2	26
PI02_3	38
PI02_4	18
PI02_5	21
PI02_6	1
PI02_7	11
PI02_8	12
PI02_9	24
PI02_10	25
PI02_11	31
PI03_0	36
PI03_1	37
PI03_2	43
PI03_3	48



mX-BASE BOARD PIN OUT	mX-LPC1343-S PIN OUT
GND	GND
VIN	VIN
VBAT	NC
RESET#	NRST
MOSI	SWO
MISO	PI00_8
SCK	PI02_11
SSEL	PI00_2
TXD	PI01_7
RXD	PI01_6
EXT_SW	PI00_7
TXD1	PI02_1
RXD1	PI02_2
VGA_R	PI00_11
VGA_G	PI01_0
VGA_B	PI01_1
AOUT	PI01_2
ADC	PI01_4
NC	PI01_5
NC	PI01_8
SWCLK	PI00_6
LCD_EN	PI03_0
LCD_RW	PI03_1
LCD_RS	PI03_2



mX-LPC1343-S PIN OUT	mX-BASE BOARD PIN OUT
+3.3V	+3.3V
NC	USB_5V
NC	NC
NC	NC
NC	NC
NC	E_RD-
NC	E_RD+
NC	E_TD-
NC	E_TD+
USB_DM	USB_DM
USB_DP	USB_DP
PI00_1	ISP
PI00_3	VBUS
PI00_5	SDA
PI00_4	SCL
PI01_9	VGA_VSYNC
PI01_10	VGA_HSYNC
PI01_11	BUZZER
PI02_3	PWM2
PI02_4	PS2_DATA
PI02_5	PS2_CLK
PI02_6	LCD_D4
PI02_7	LCD_D5
PI02_8	LCD_D6
PI02_9	LCD_D7
PI02_10	NC
PI03_3	NC
GND	GND