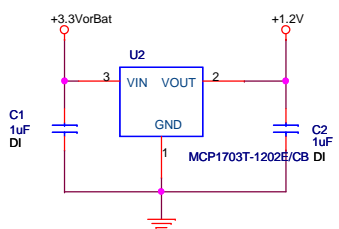
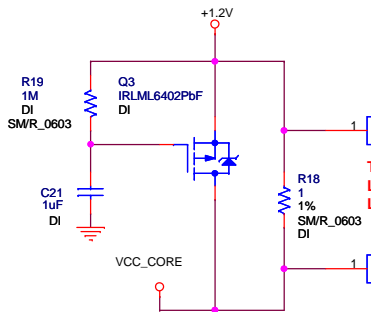


**+3.3V or Bat -> +1.2V Rail**



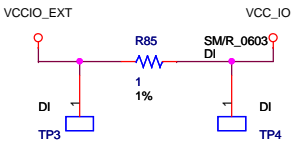
**Core Current**



To U9 sense for current  
 Thin signal traces or non load bearing copper pour  
 Direct path from R35 to U7

TP1-TP4 are 10mil free Via's  
 Locate TP1 & TP2 very close to R35  
 Locate TP3 & TP4 very close to R34

**I/O Current**

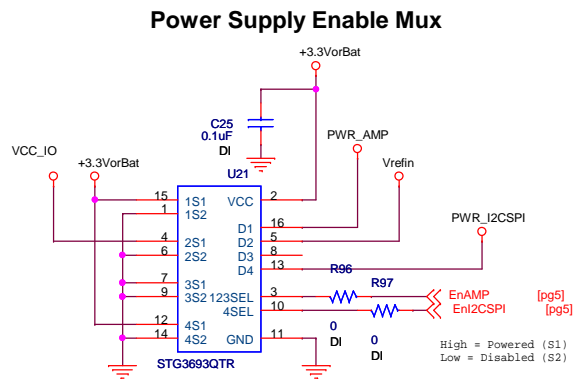
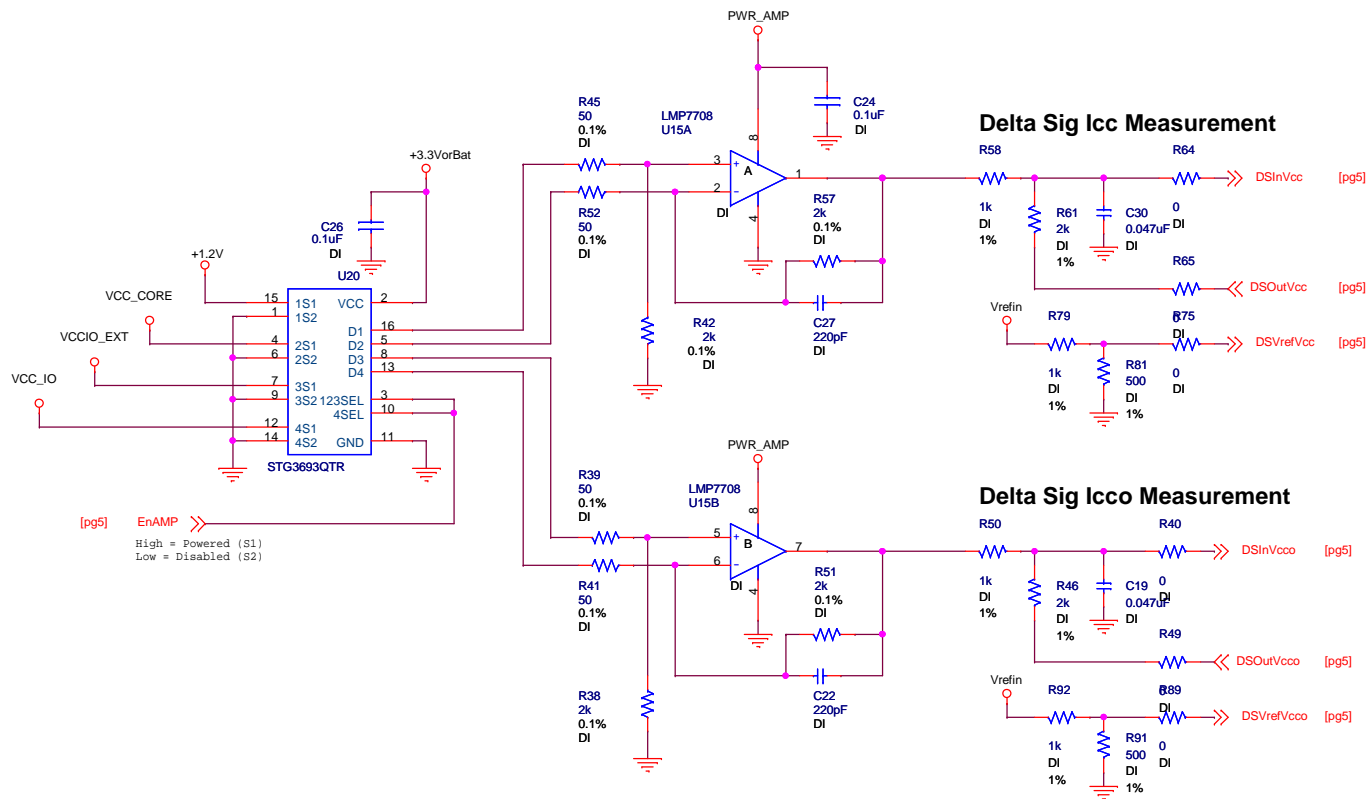



To U9 sense for current  
 Thin signal traces  
 Direct path from R34 to U7

**Lattice**<sup>®</sup>  
 Semiconductor Corporation

Lattice Semiconductor Applications  
 Email: techsupport@latticesemi.com  
 Phone (503) 268-8001 -or- (800) LATTICE

Title		USB 5V, XO Power Rails 3.0V Batt, 1.2V Rail and Current Monitors	
Size	Project	Schematic Rev	
B	MACHXO2 Pico Board	A	
Date: Friday, March 4, 2011		Board Rev	E
Sheet		1 of 6	



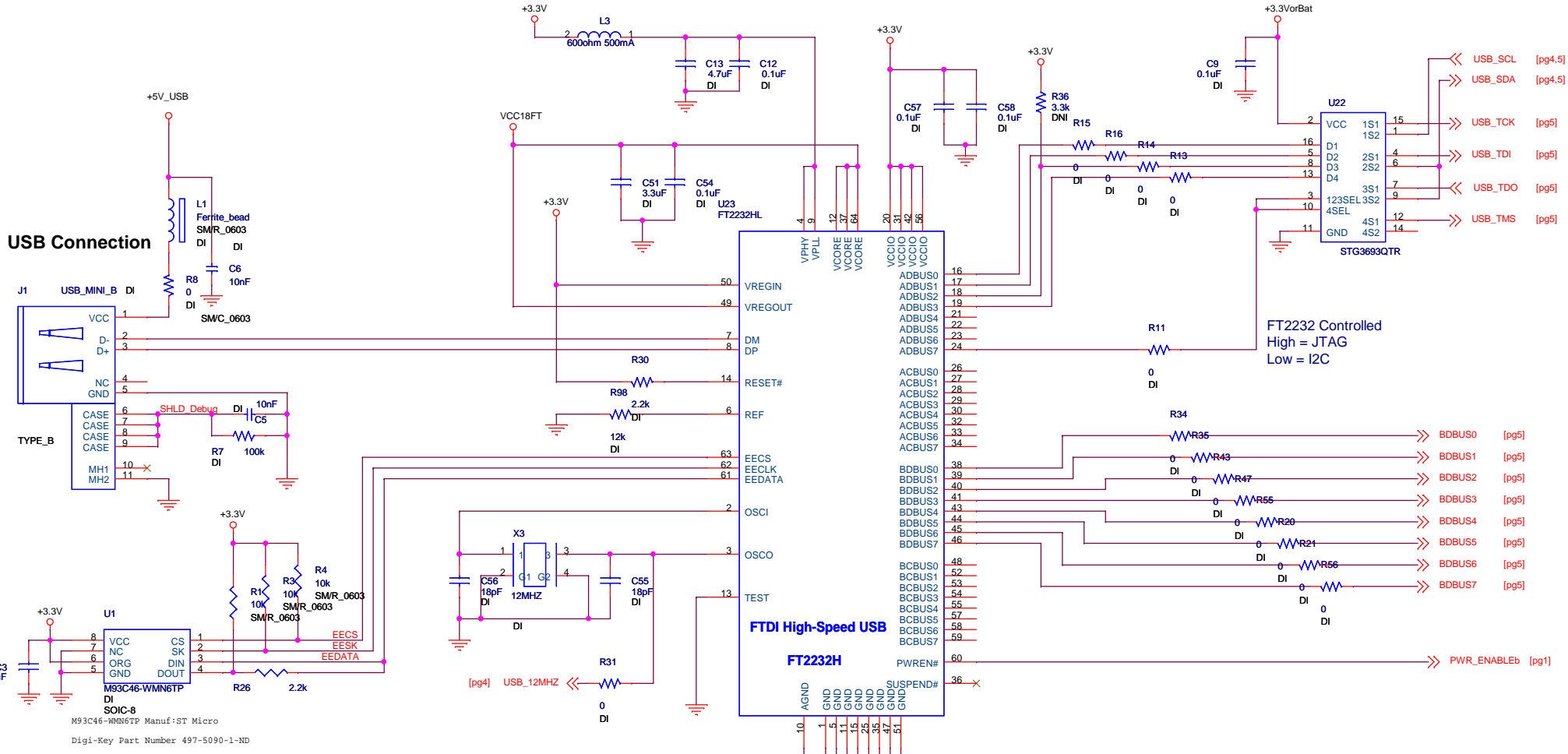


**Lattice**  
Semiconductor  
Corporation

Lattice Semiconductor Applications  
Email: techsupport@latticesemi.com  
Phone (503) 268-8001 -or- (800) LATTICE

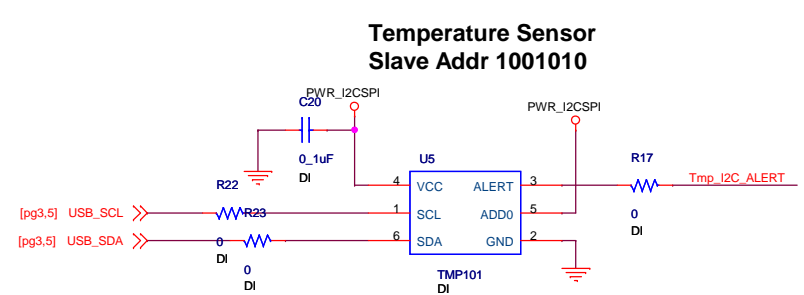
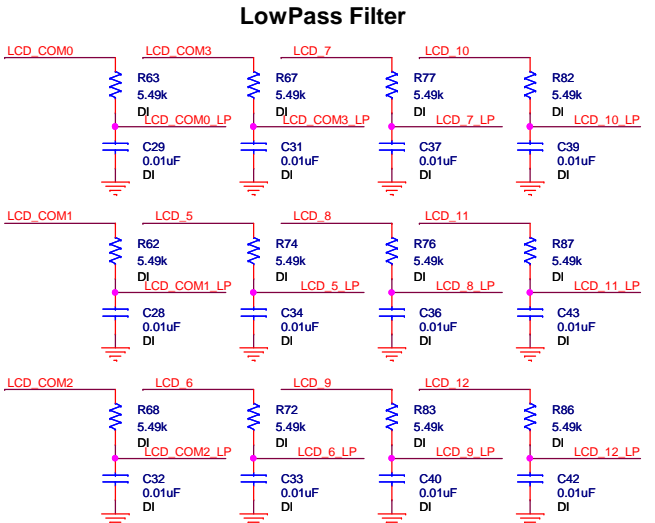
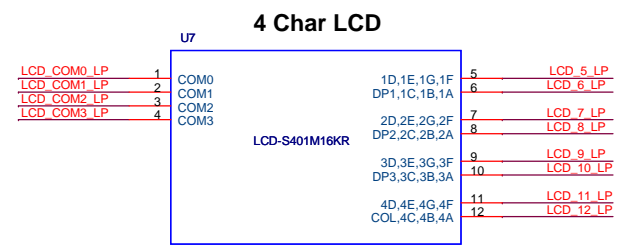
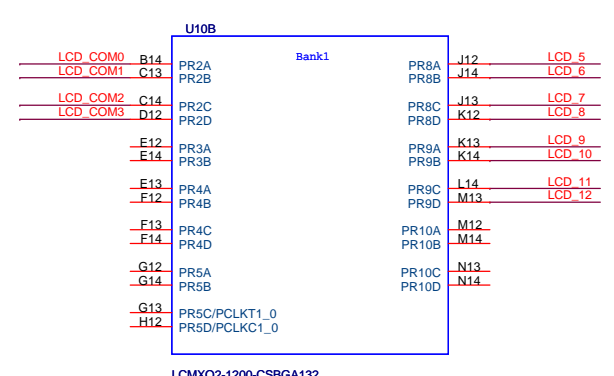
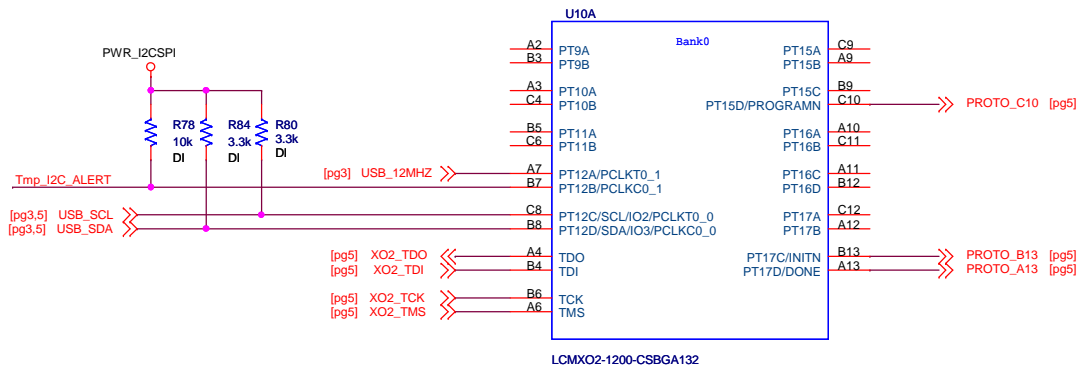
Title		Current Sense Amplifiers, Power Enable Mux	
Size	Project	Schematic Rev	
B	MACHXO2 Pico Board	A	A
Date: Friday, March 4, 2011		Board Rev	E
Sheet		2 of 6	

### USB Connection



Lattice Semiconductor Applications  
 Email: techsupport@latticesemi.com  
 Phone (503) 268-8001 -or- (800) LATTICE

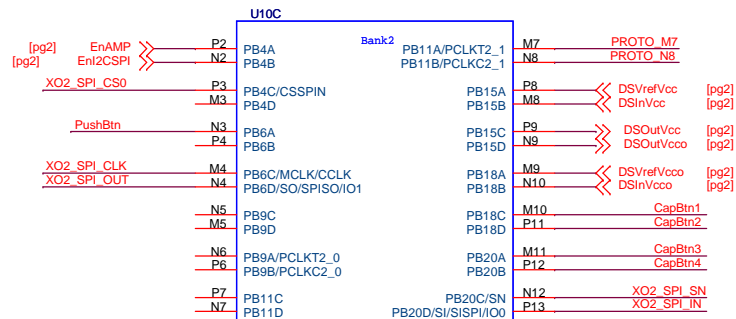
Title		USB to JTAG and I2C for the X02	
Size	Project	Schematic Rev	
B	MACHX02 Pico Board	A	
Date:	Friday, March 4, 2011	Board Rev	E
		Sheet	3 of 6



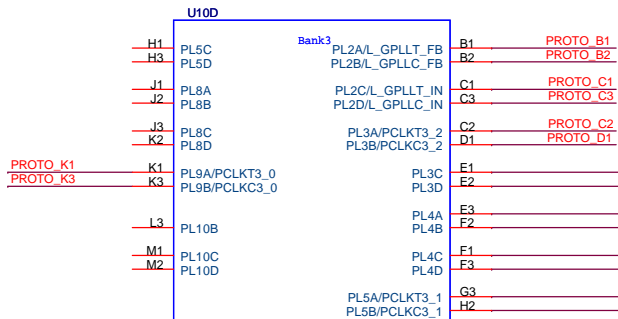
**Lattice Semiconductor Corporation**

Lattice Semiconductor Applications  
Email: techsupport@latticesemi.com  
Phone (503) 268-8001 -or- (800) LATTICE

Title		XO2 Bank 0-1, LCD, I2C Temp	
Size	Project	Schematic Rev	
B	MACHXO2 Pico Board	A	
Date: Friday, March 4, 2011		Board Rev	
		E	
Sheet		4 of 6	

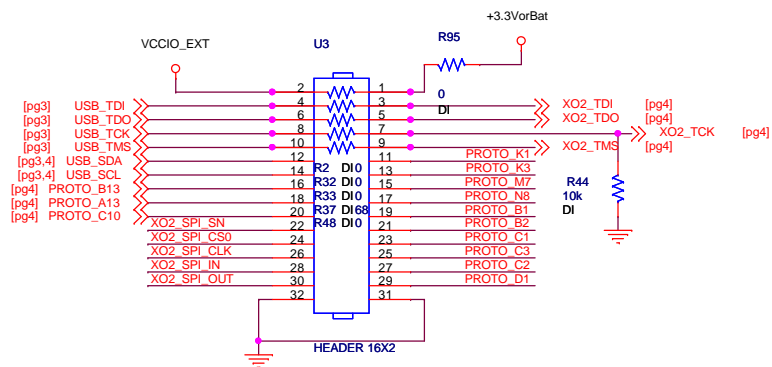


LCMXO2-1200-CSBGA132

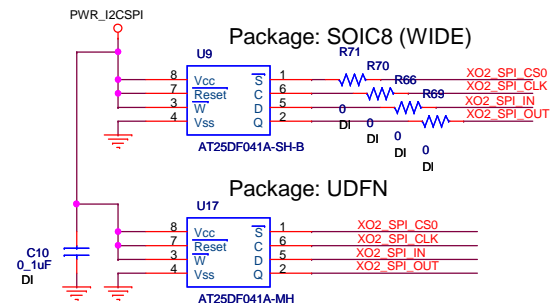


LCMXO2-1200-CSBGA132

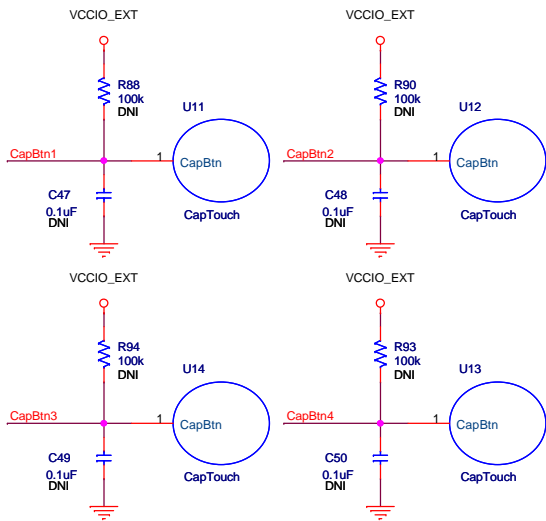
### Header



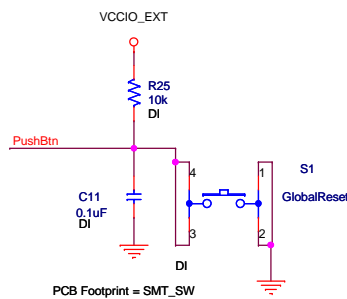
### 4MBit SPI



### Capacitive Touch Pads



### GSR/Wake from Standby



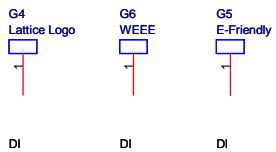
Part Number: EVO Q2K03W  
Panasonic SMD



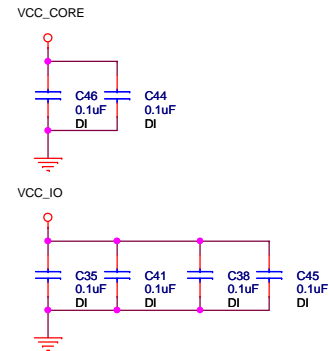
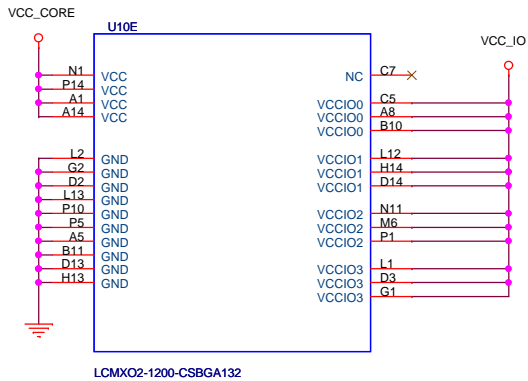
Lattice Semiconductor Applications  
Email: techsupport@latticesemi.com  
Phone (503) 268-8001 -or- (800) LATTICE

Title		
XO2 Bank 2-3, Cap Pads, Expansion Header, SPI		
Size	Project	Schematic Rev
B	MACHXO2 Pico Board	A
		Board Rev
		E
Date:	Friday, March 4, 2011	Sheet
		5 of 6

### Board Logos



### Board Mounting Holes



Lattice Semiconductor Applications  
 Email: techsupport@latticesemi.com  
 Phone (503) 268-8001 -or- (800) LATTICE

Title		XO2 Power	
Size	Project	Schematic Rev	A
B	MACHXO2 Pico Board	Board Rev	E
Date:	Friday, March 4, 2011	Sheet	6 of 6