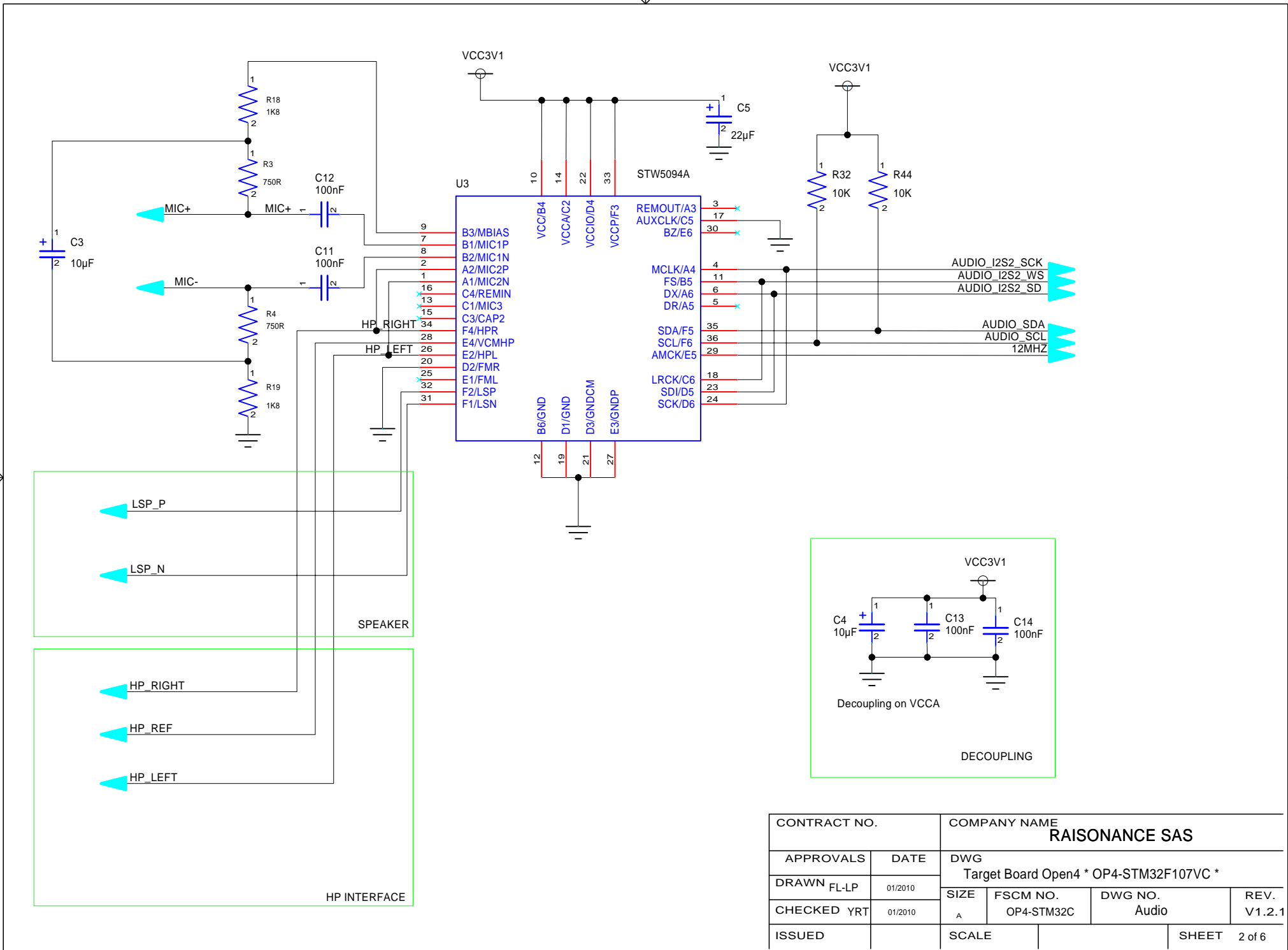
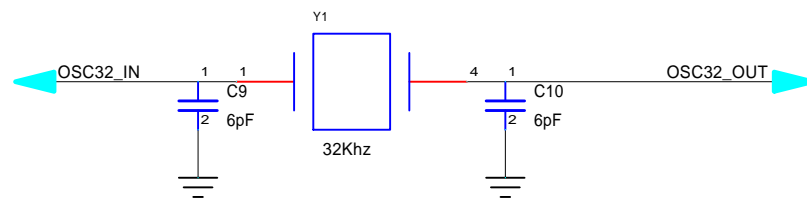


CONTRACT NO.		COMPANY NAME RAISONANCE SAS			
APPROVALS	DATE	DWG Target Board Open4 * OP4-STM32F107VC *			
DRAWN FL-LP	01/2010	SIZE	FSCM NO.	DWG NO.	REV.
CHECKED YRT	01/2010	A	OP4-STM32C	Microcontroleur	V1.2.1
ISSUED		SCALE		SHEET 1 of 6	

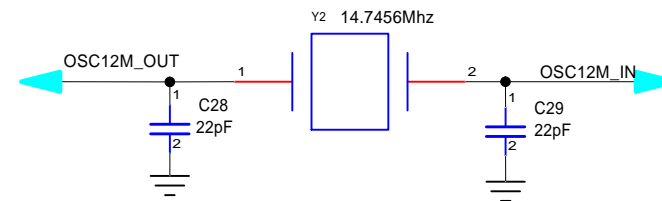


CONTRACT NO.		COMPANY NAME RAISONANCE SAS			
APPROVALS	DATE	DWG Target Board Open4 * OP4-STM32F107VC *			
DRAWN FL-LP	01/2010	SIZE	FSCM NO.	DWG NO.	REV.
CHECKED YRT	01/2010	A	OP4-STM32C	Audio	V1.2.1
ISSUED		SCALE		SHEET 2 of 6	



Default capacity value for 32KHz crystal : 6pF
 Final value will depend on available crystal for manufacturing

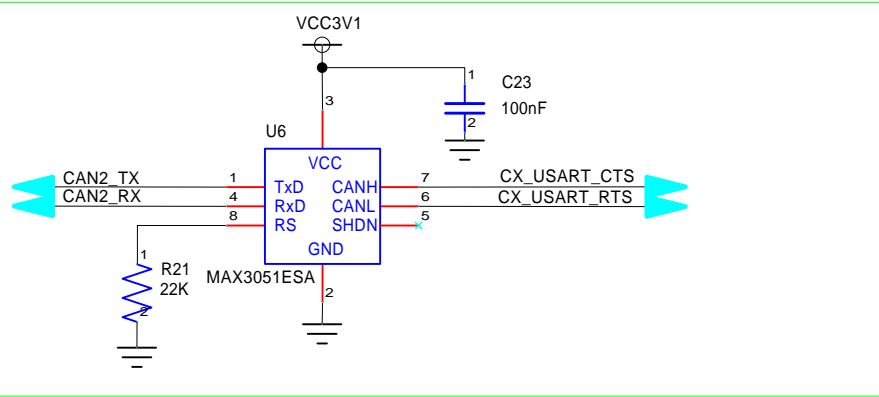
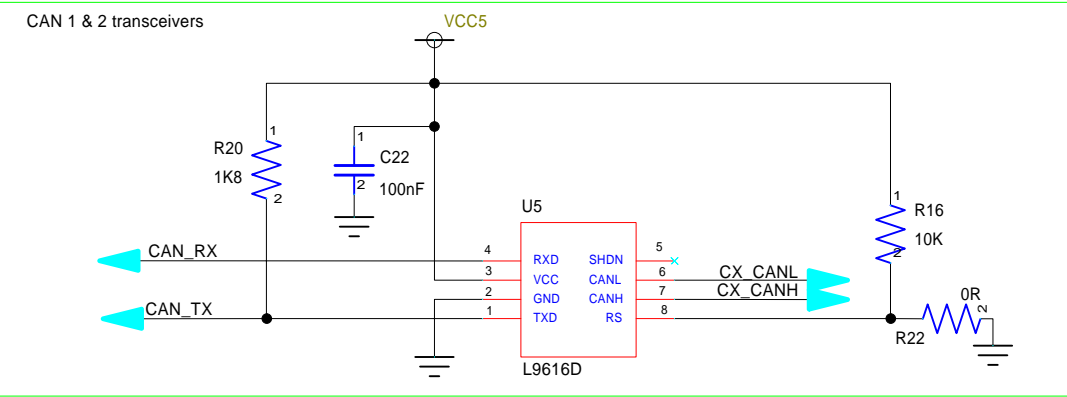
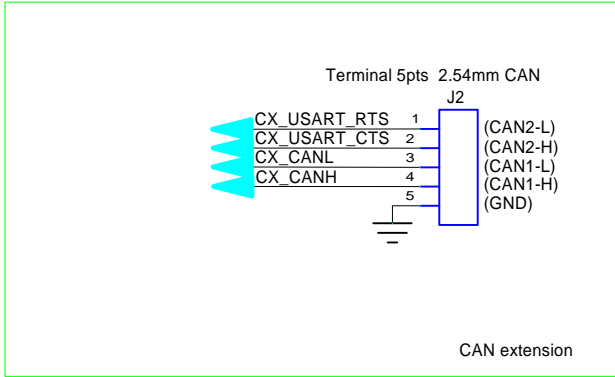
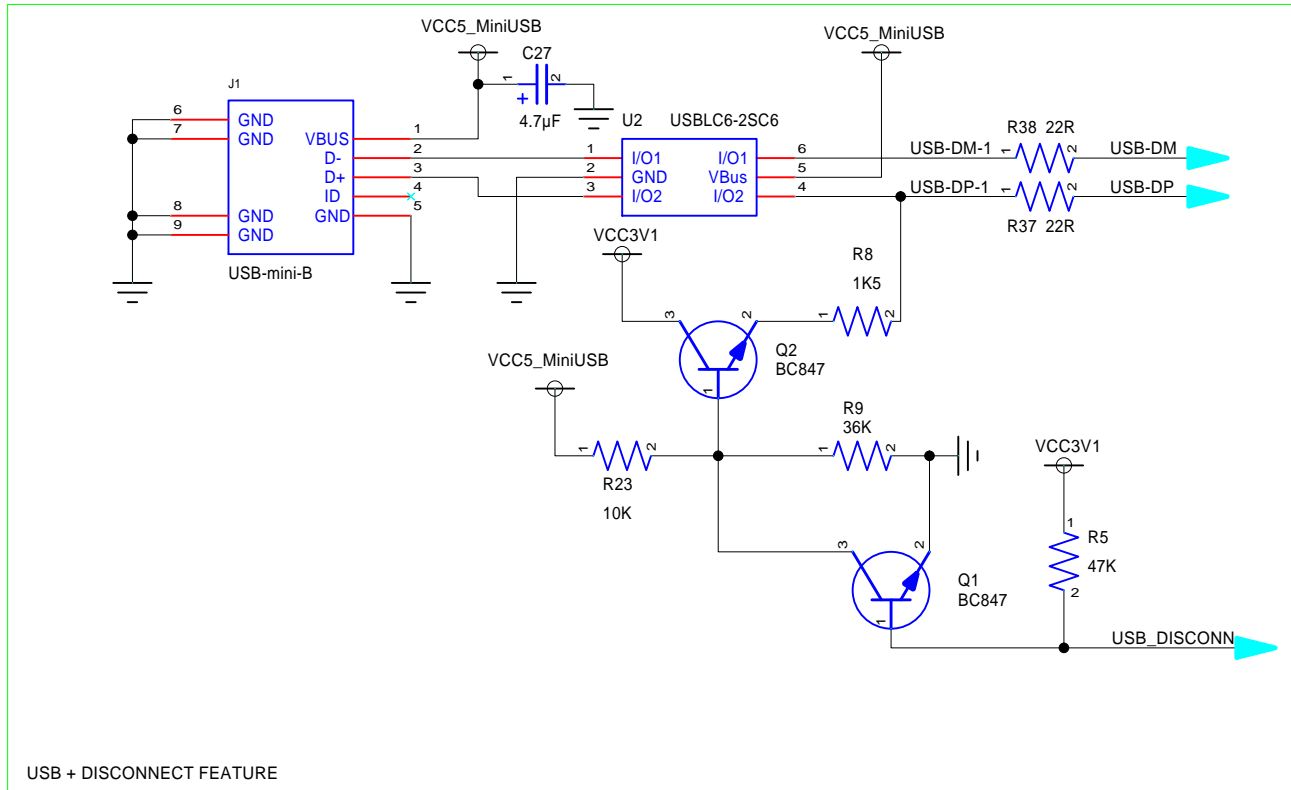
RTC clock oscillator



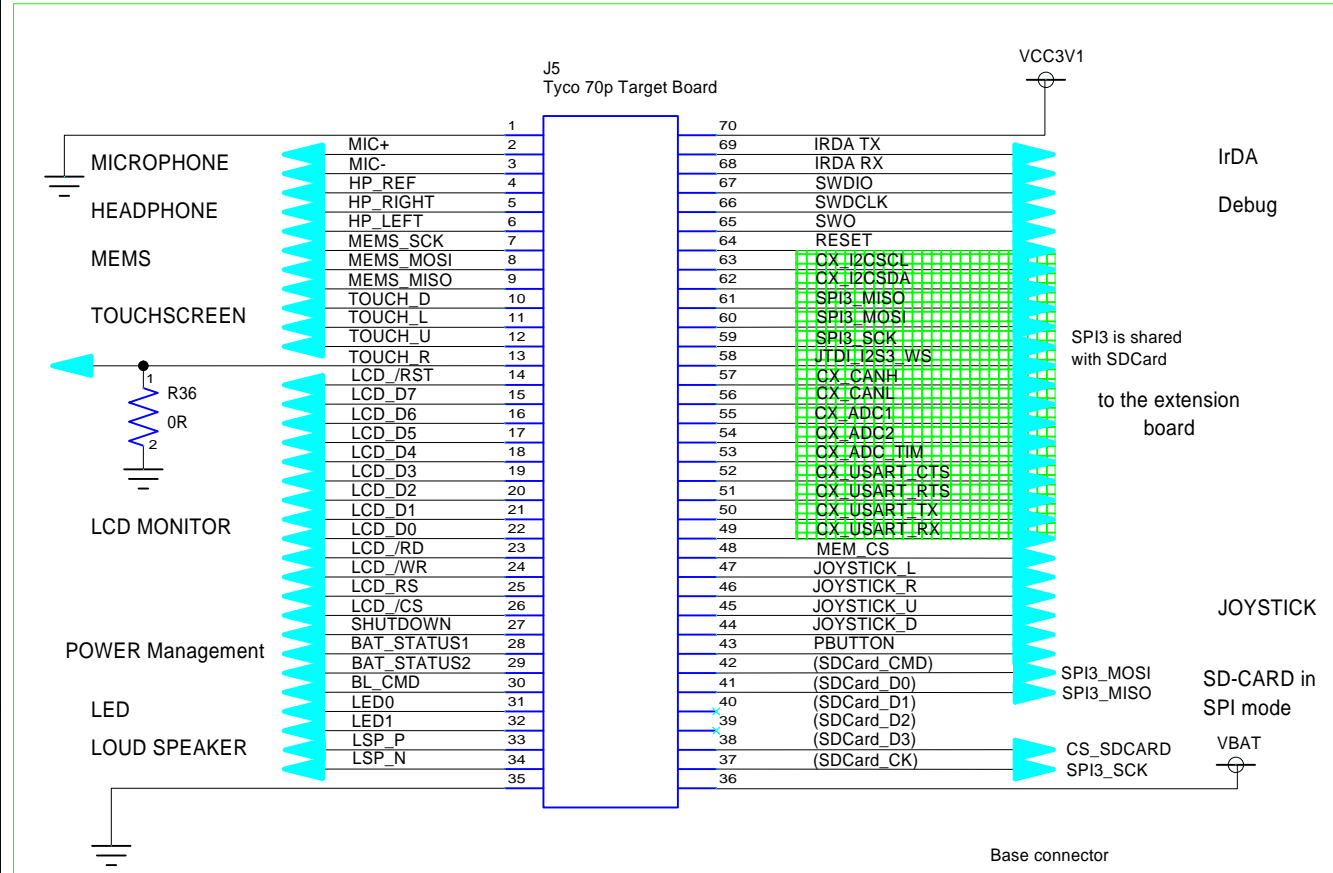
Default capacity value for 14.7456MHz crystal : 22pF
 Final value will depend on available crystal for manufacturing

CPU clock oscillator

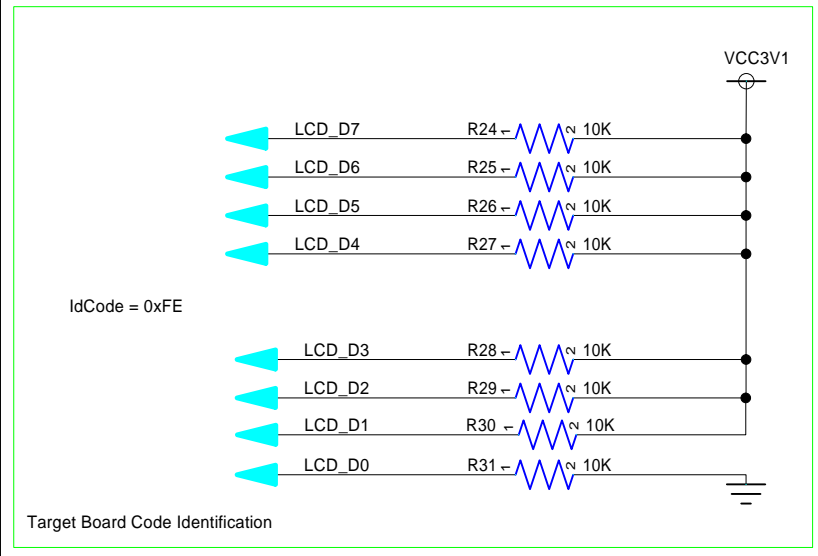
CONTRACT NO.		COMPANY NAME RAISONANCE SAS			
APPROVALS	DATE	DWG Target Board Open4 * OP4-STM32F107VC *			
DRAWN FL-LP	01/2010	SIZE	FSCM NO.	DWG NO.	REV.
CHECKED YRT	01/2010	A	OP4-STM32C	Clock source	V1.2.1
ISSUED		SCALE		SHEET 3 of 6	



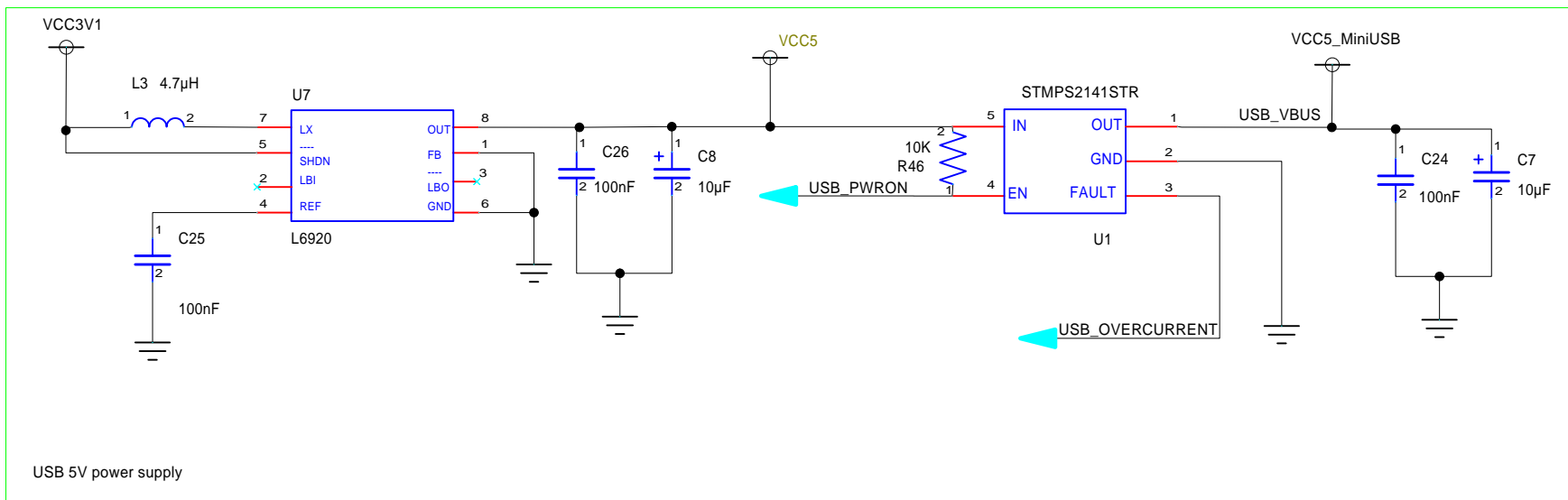
CONTRACT NO.		COMPANY NAME RAISONANCE SAS			
APPROVALS	DATE	DWG Target Board Open4 * OP4-STM32F107VC *			
DRAWN FL-LP	01/2010	SIZE	FSCM NO.	DWG NO	REV.
CHECKED YRT	01/2010	A	OP4-STM32C	Peripherals CAN	V1.2.1
ISSUED		SCALE		SHEET	4 of 6



Extension Board connector			
Daughter Board printed name:	JP2 Extension connector:	J6 Target Board connector:	Target Board signals:
V2V8	1	70	VCC3V1
GND	2	1	GND
SCL	3	63	CX_I2CSCL
SDA	4	62	CX_I2CSDA
MISO	5	61	SPI3_MISO
SD	6	60	SPI3_MOSI
SCK	7	59	SPI3_SCK
WS	8	58	JTDI_I2S3_WS
CANH	9	57	CX_CANH
CANL	10	56	CX_CANL
ADC1	11	55	CX_ADC1
ADC2	12	54	CX_ADC2
A_TIM	13	53	CX_ADC_TIM
CTS	14	52	CX_USART_CTS
RTS	15	51	CX_USART_RTS
TX	16	50	CX_USART_TX
CK	17	43	P_BUTTON
RX	18	49	CX_USART_RX
VEXT	19	36	VBAT
GND	20	35	GND



CONTRACT NO.		COMPANY NAME RAISONANCE SAS			
APPROVALS	DATE	DWG Target Board Open4 * OP4-STM32F107VC *			
DRAWN FL-LP	01/2010	SIZE A	FSCM NO. OP4-STM32C	DWG NO. Base connector	REV. V1.2.1
CHECKED YRT	01/2010	SCALE			SHEET 5 of 6
ISSUED					



CONTRACT NO.		COMPANY NAME RAISONANCE SAS			
APPROVALS	DATE	DWG Target Board Open4 * OP4-STM32F107VC *			
DRAWN FL-LP	01/2010	SIZE	FSCM NO.	DWG NO.	REV.
CHECKED YRT	01/2010	A	OP4-STM32C	USB Power supply	V1.2.1
ISSUED		SCALE		SHEET 6 of 6	