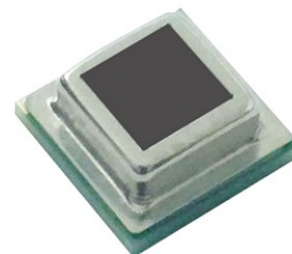


# SMD Passive Infrared Sensor S18-L262B-2

## Feature

- Custom design is available.
- Higher in cost-performance
- Long range
- Wide angle

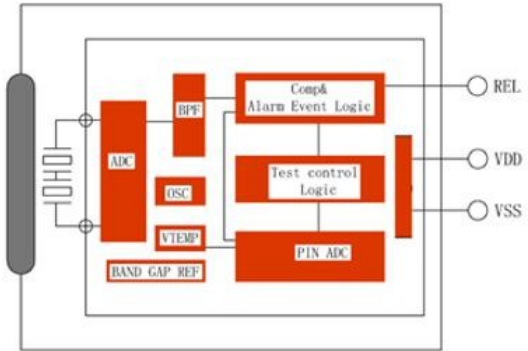


## Technical Data

### 1.Maximum Ratings

Characteristics	Symbol	Min. Value	Max. Value	Unit	Remarks
Working Temperature	TOT	-30	70	°C	
Storage Temperature	TST	-40	80	°C	
Max.current for pin	Into	-100	100	mA	
Viewing angle		X=110°	Y=90°		
Detection spectral response	$\lambda$	5	14	$\mu\text{m}$	

## 2. Working Conditions (T=25°C, Vdd=3V, Except other requirement)

Characteristics	Symbol	Min.	Type	Max.	Unit	Remarks
Supply Voltage	V <sub>DD</sub>	2.2	3	3.7	V	
Working Current	I <sub>DD</sub>	9	9.5	11	μA	
Sensitivity	V <sub>SENS</sub>	90		2000	μV	
Output REL						
Output Low Current	I <sub>OL</sub>	10			mA	V <sub>OL</sub> <1V
Output High Current	I <sub>OH</sub>			-10	mA	V <sub>OL</sub> >(V <sub>DD</sub> -1V)
Oscillator & Band Pass Filter(BPF)						
Band Pass Filter(BPF) Low cut-off frequency				7	Hz	
Band Pass Filter(BPF) High cut-off frequency				0.44	Hz	
Oscillator frequency on Chip	F <sub>CLK</sub>			64	kHz	
Interior Block Diagram						

--	--

### **Application:**

- Smart Lighting
- Infrared automatic PIR sensor light
- Using battery power supply, PIR sensors are easily used in entrance, bathroom, corridor, and other temporary lighting places.
- Compared to sound-control lights, pyroelectric sensor has better anti-jamming effect. Only sensitive to human body temperature. To light, when person come, and light off when person leave.

### **FAQ**

#### 1.Can PIR sensor detect animals?

PIR sensors are excellent in human and animal detection. They are mostly used in triggering an intruder alarm and activate household appliances upon the presence of a human.

#### 2.Do PIR sensors work through glass?

No, alarm motion sensors do not work through glass. Most motion sensors use passive infrared (PIR) technology to detect motion. Changes in IR energy are not easily detected through glass. This is why motion sensors will generally not work through windows, which are usually insulated.