



**Cable ID: PCF6A-10CU-0300**

Date / Time: 03/13/2020 01:07:22 PM

Headroom 4.4 dB (NEXT 12-45)

Test Limit: ISO11801 Channel Class Ea

Cable Type: Cat 7 S/FTP

NVP: 78.0%

Software Version: V6.2 Build 1

Limits Version: V7.2

Calibration Start Date:

Main (Module): 12/03/2018

Remote (Module): 12/03/2018

**Test Summary: PASS**

Model: DSX-8000

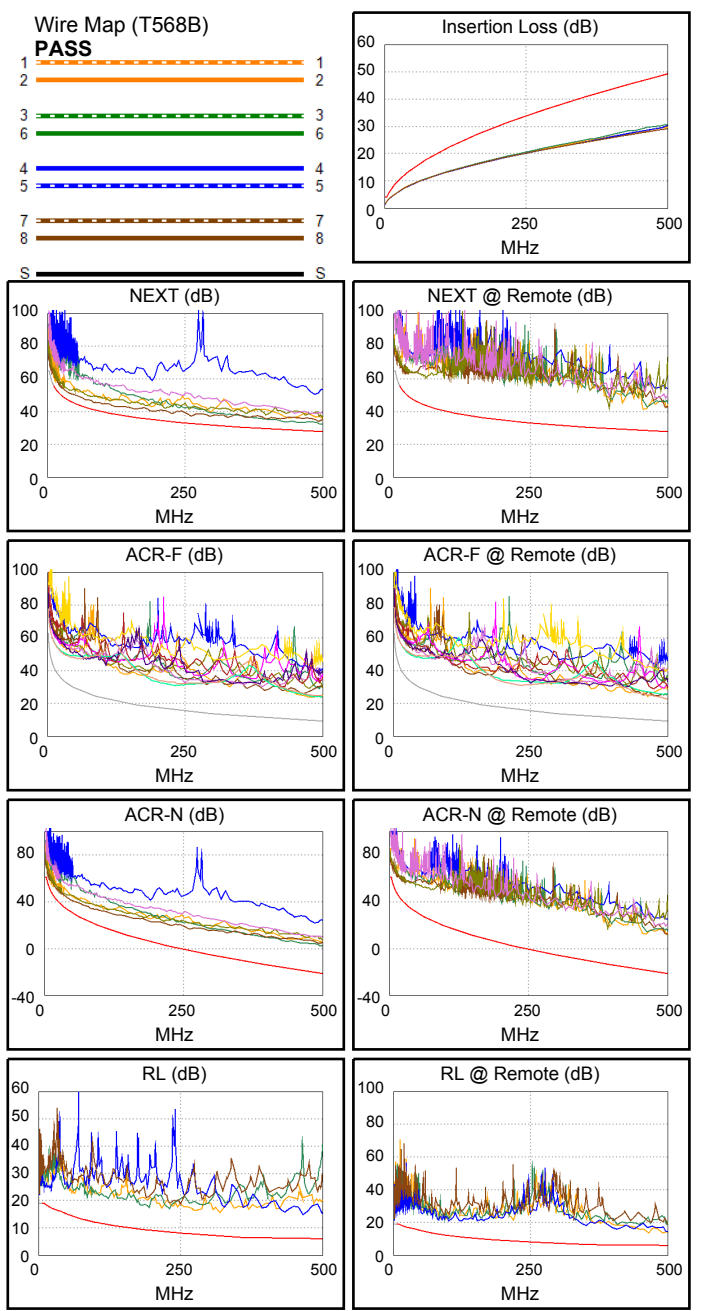
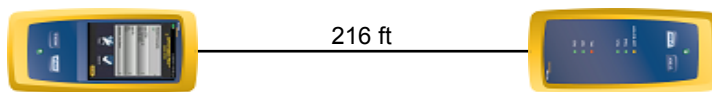
Main S/N: 1820302

Remote S/N: 1824298

Main Adapter: DSX-CHA804

Remote Adapter: DSX-CHA804

Length (ft), Limit 328	[Pair 45]	216
Prop. Delay (ns), Limit 555	[Pair 12]	290
Delay Skew (ns), Limit 50	[Pair 12]	8
Resistance (ohms), Limit 25.00	[Pair 12]	10.56
Insertion Loss Margin (dB)	[Pair 36]	18.4
Frequency (MHz)	[Pair 36]	496.0
Limit (dB)	[Pair 36]	49.1



Worst Case Margin Worst Case Value

<b>PASS</b>	MAIN	SR	MAIN	SR
Worst Pair	12-45	36-45	12-45	12-36
<b>NEXT (dB)</b>	4.4	11.5	4.4	12.7
Freq. (MHz)	500.0	14.6	500.0	456.0
Limit (dB)	27.9	53.9	27.9	28.6
Worst Pair	36	36	45	12
<b>PS NEXT (dB)</b>	4.4	12.0	4.9	13.7
Freq. (MHz)	29.8	12.9	495.0	462.0
Limit (dB)	46.1	52.2	24.9	25.4

<b>PASS</b>	MAIN	SR	MAIN	SR
Worst Pair	12-36	78-45	12-36	78-45
<b>ACR-F (dB)</b>	14.0	13.6	14.0	13.6
Freq. (MHz)	477.0	500.0	477.0	500.0
Limit (dB)	9.7	9.3	9.7	9.3
Worst Pair	45	45	45	45
<b>PS ACR-F (dB)</b>	16.3	15.9	16.3	16.0
Freq. (MHz)	500.0	493.0	500.0	496.0
Limit (dB)	6.3	6.4	6.3	6.3

<b>PASS</b>	MAIN	SR	MAIN	SR
Worst Pair	36-45	36-45	12-45	12-36
<b>ACR-N (dB)</b>	6.2	9.7	23.5	33.3
Freq. (MHz)	3.5	3.3	500.0	498.0
Limit (dB)	60.0	60.5	-21.4	-21.3
Worst Pair	36	36	45	36
<b>PS ACR-N (dB)</b>	5.6	10.0	24.2	33.5
Freq. (MHz)	3.5	3.6	499.0	498.0
Limit (dB)	57.5	57.2	-24.4	-24.3

<b>PASS</b>	MAIN	SR	MAIN	SR
Worst Pair	45	12	45	12
<b>RL (dB)</b>	5.5	7.3	8.6	7.3
Freq. (MHz)	11.3	466.0	466.0	466.0
Limit (dB)	18.7	6.0	6.0	6.0

Compliant Network Standards:

10BASE-T	100BASE-TX	100BASE-T4
1000BASE-T	2.5GBASE-T	5GBASE-T
10GBASE-T	ATM-25	ATM-51
ATM-155	100VG-AnyLan	TR-4
TR-16 Active	TR-16 Passive	