



**Cable ID: PCF8-10CU-0100**

Test Limit: ISO11801 Channel Class I (+All)

Limits Version: V7.8

Date / Time: 11/30/2023 03:58:36 PM

Operator: QC

Headroom 11.7 dB (NEXT 3,6-4,5)

Cable Type: Cat 8 S/FTP

NVP: 72.0%

Main: Versiv

S/N: 1824298

Software Version: V6.9 Build 2

Calibration Date: 12/02/2022

Adapter: DSX-8000 (DSX-CHA804)

S/N: 23050129

**Test Summary: PASS**

Remote: Versiv

S/N: 1820302

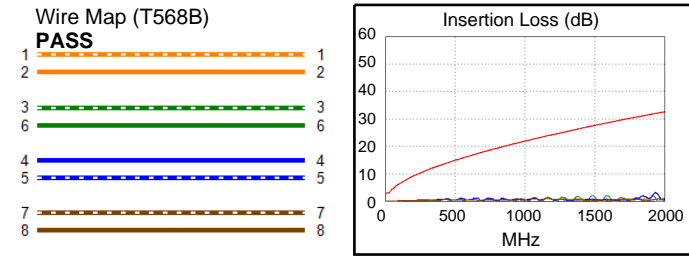
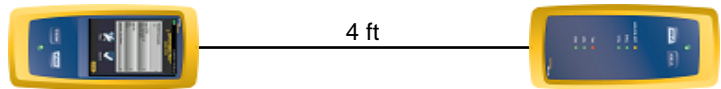
Software Version: V6.9 Build 2

Calibration Date: 12/02/2022

Adapter: DSX-8000R (DSX-CHA804)

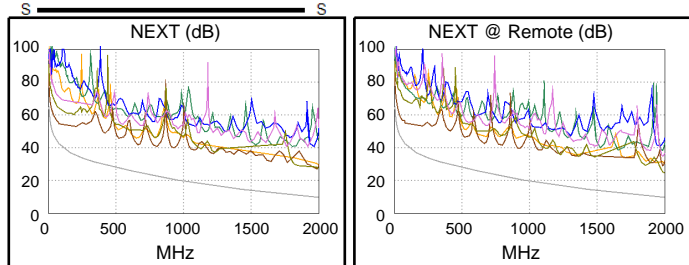
S/N: 23050130

|                                        |                |        |
|----------------------------------------|----------------|--------|
| Length (ft)                            | [Pair 1,2]     | 4      |
| Prop. Delay (ns), Limit 169            | [Pair 1,2]     | 5      |
| Delay Skew (ns), Limit 16              | [Pair 1,2]     | 0      |
| Resistance (ohms), Limit 6.40          | [Pair 1,2]     | 0.11   |
| Resist. Unbal. (ohms), Limit 0.200     | [Pair 4,5]     | 0.021  |
| Resist. P2P Unbal. (ohms), Limit 0.200 | [Pair 1,2-3,6] | 0.027  |
|                                        |                |        |
| Insertion Loss Margin (dB)             | [Pair 4,5]     | 28.9   |
| Frequency (MHz)                        | [Pair 4,5]     | 1936.0 |
| Limit (dB)                             | [Pair 4,5]     | 32.1   |

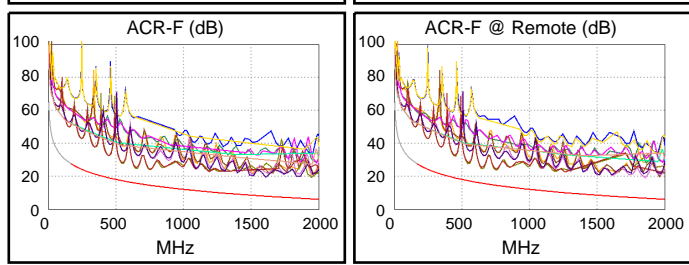


Worst Case Margin Worst Case Value

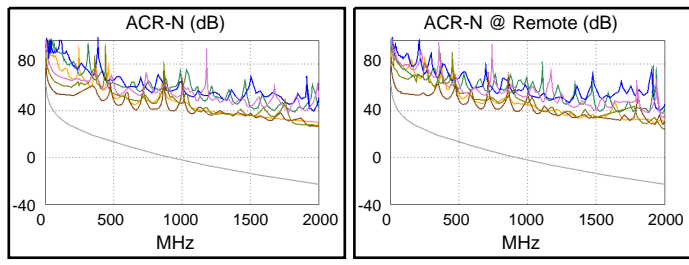
| N/A                 | MAIN    | SR      | MAIN    | SR      |
|---------------------|---------|---------|---------|---------|
| Worst Pair          | 3,6-4,5 | 3,6-4,5 | 3,6-4,5 | 3,6-7,8 |
| <b>NEXT (dB)</b>    | 11.7    | 11.9    | 17.3    | 15.3    |
| Freq. (MHz)         | 15.5    | 44.8    | 1986.   | 2000.   |
| Limit (dB)          | 54.2    | 46.5    | 9.7     | 9.6     |
| Worst Pair          | 3,6     | 3,6     | 3,6     | 3,6     |
| <b>PS NEXT (dB)</b> | 14.3    | 14.8    | 16.6    | 16.2    |
| Freq. (MHz)         | 15.5    | 54.0    | 1990.   | 1992.   |
| Limit (dB)          | 51.2    | 42.1    | 6.7     | 6.7     |



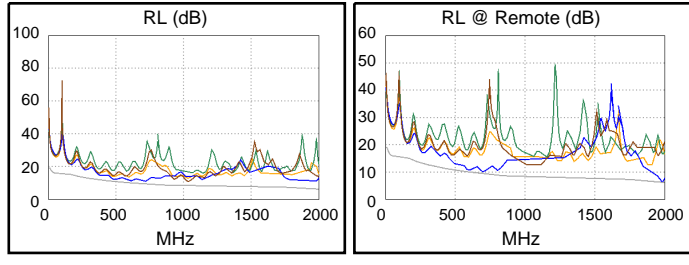
| PASS                 | MAIN    | SR      | MAIN    | SR      |
|----------------------|---------|---------|---------|---------|
| Worst Pair           | 3,6-4,5 | 3,6-4,5 | 3,6-4,5 | 3,6-7,8 |
| <b>ACR-F (dB)</b>    | 8.8     | 8.7     | 12.9    | 12.1    |
| Freq. (MHz)          | 650.0   | 646.0   | 1940.   | 1844.   |
| Limit (dB)           | 15.7    | 15.8    | 6.2     | 6.7     |
| Worst Pair           | 3,6     | 4,5     | 3,6     | 3,6     |
| <b>PS ACR-F (dB)</b> | 11.1    | 11.4    | 11.2    | 14.1    |
| Freq. (MHz)          | 1498.   | 646.0   | 1506.   | 1962.   |
| Limit (dB)           | 5.5     | 12.8    | 5.4     | 3.1     |



| N/A                  | MAIN    | SR      | MAIN    | SR      |
|----------------------|---------|---------|---------|---------|
| Worst Pair           | 3,6-4,5 | 3,6-4,5 | 3,6-4,5 | 3,6-7,8 |
| <b>ACR-N (dB)</b>    | 14.7    | 15.9    | 47.9    | 47.5    |
| Freq. (MHz)          | 15.5    | 39.8    | 1948.   | 2000.   |
| Limit (dB)           | 51.2    | 43.3    | -22.2   | -23.1   |
| Worst Pair           | 3,6     | 3,6     | 3,6     | 3,6     |
| <b>PS ACR-N (dB)</b> | 17.3    | 18.6    | 48.7    | 48.0    |
| Freq. (MHz)          | 15.5    | 22.6    | 1996.   | 2000.   |
| Limit (dB)           | 48.2    | 45.4    | -26.0   | -26.1   |



| PASS           | MAIN  | SR    | MAIN  | SR    |
|----------------|-------|-------|-------|-------|
| Worst Pair     | 4,5   | 4,5   | 7,8   | 4,5   |
| <b>RL (dB)</b> | 5.4   | 2.6   | 2.8   | 2.6   |
| Freq. (MHz)    | 1942. | 1942. | 1036. | 1942. |
| Limit (dB)     | 6.4   | 6.4   | 8.0   | 6.4   |



Compliant Network Standards:  
 10BASE-T 100BASE-TX 100BASE-T4  
 1000BASE-T 2.5GBASE-T 5GBASE-T  
 10GBASE-T 25GBASE-T 40GBASE-T  
 ATM-25 ATM-51 ATM-155  
 100VG-AnyLan TR-4 TR-16 Active  
 TR-16 Passive



**Cable ID: PCF8-10CU-0100**

**Test Limit: ISO11801 Channel Class I (+All)**

Limits Version: V7.8

Date / Time: 11/30/2023 03:58:36 PM

Operator: QC

**Headroom 11.7 dB (NEXT 3,6-4,5)**

Cable Type: Cat 8 S/FTP

NVP: 72.0%

Main: Versiv

S/N: 1824298

Software Version: V6.9 Build 2

Calibration Date: 12/02/2022

Adapter: DSX-8000 (DSX-CHA804)

S/N: 23050129

**Test Summary: PASS**

Remote: Versiv

S/N: 1820302

Software Version: V6.9 Build 2

Calibration Date: 12/02/2022

Adapter: DSX-8000R (DSX-CHA804)

S/N: 23050130

|                    | Worst Case Margin |       | Worst Case Value |         |
|--------------------|-------------------|-------|------------------|---------|
|                    | MAIN              | SR    | MAIN             | SR      |
| <b>PASS</b>        |                   |       |                  |         |
| Worst Pair         | 7,8               | 7,8   | 7,8              | 7,8     |
| <b>TCL (dB)</b>    | 17.4              | 16.4  | 17.4             | 16.4    |
| Freq. (MHz)        | 1502.             | 1398. | 1502.            | 1398.   |
| Limit (dB)         | 3.0               | 3.0   | 3.0              | 3.0     |
| <b>N/A</b>         |                   |       |                  |         |
| Worst Pair         |                   |       | 7,8-3,6          | 1,2-3,6 |
| <b>CDNEXT (dB)</b> |                   |       | 14.0             | 14.7    |
| Freq. (MHz)        |                   |       | 1914.            | 1928.   |
| Limit (dB)         |                   |       |                  |         |
| <b>N/A</b>         |                   |       |                  |         |
| Worst Pair         |                   |       | 3,6              | 3,6     |
| <b>CMRL (dB)</b>   |                   |       | 4.3              | 3.9     |
| Freq. (MHz)        |                   |       | 704.0            | 702.0   |
| Limit (dB)         |                   |       |                  |         |
| <b>PASS</b>        |                   |       |                  |         |
| Worst Pair         | 1,2               | 1,2   | 1,2              | 1,2     |
| <b>ELTCTL (dB)</b> | 10.0              | 10.9  | 10.0             | 10.9    |
| Freq. (MHz)        | 1958.             | 1738. | 1958.            | 1738.   |
| Limit (dB)         | 3.0               | 3.0   | 3.0              | 3.0     |

