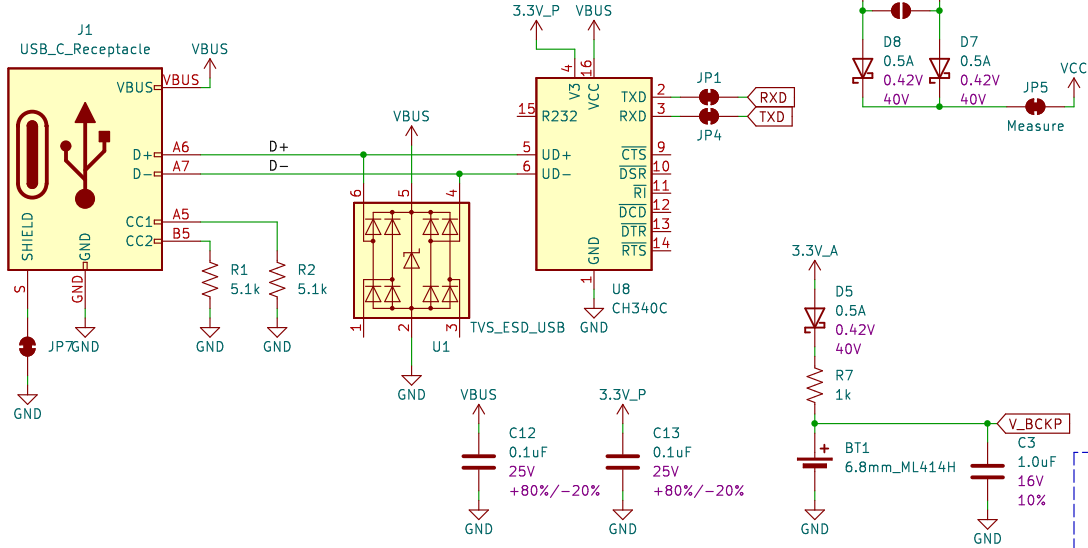
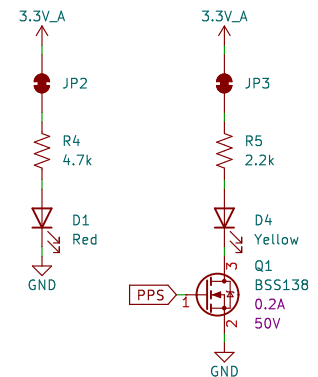


Power

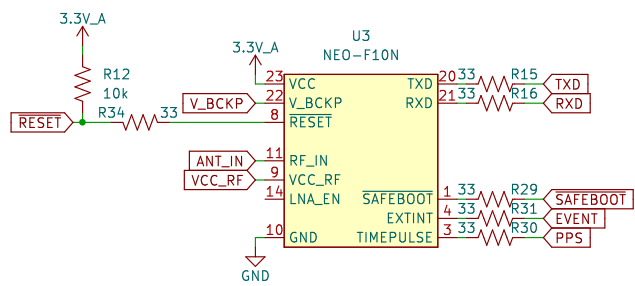


SparkFun_NEO-F10N-Connectors
File: SparkFun_NEO-F10N-Connectors.kicad_sch

LEDs

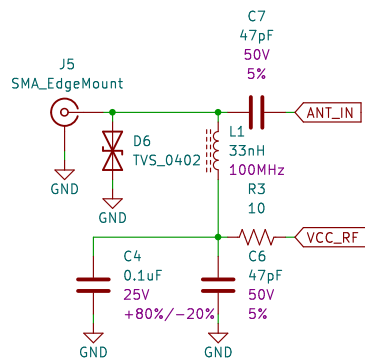


u-blox NEO-F10N GNSS Dual-Band



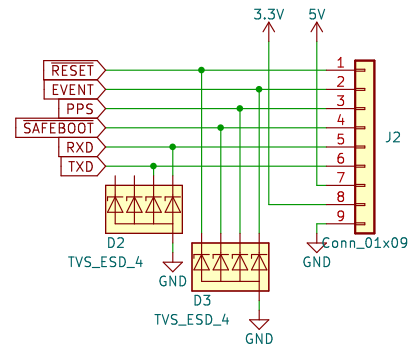
Designed by: N.Seidle		Ordering Instructions	
Sheet: /			
File: SparkFun_NEO-F10N.kicad_sch			
Title: NEO-F10N			
Size: USLetter	Date: 2023-07-28	Rev: v10	
KiCad E.D.A.	eeschema 7.0.7	Id: 1/2	

RF Connector

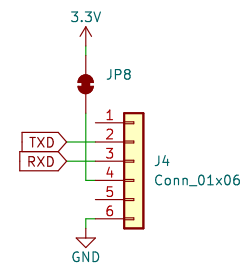


Coplanar Waveguide Calculation:
 Copper Thickness (1oz): 1.4mil/0.035mm
 Board thickness: 1.6mm
 Dielectric thickness: 1.53mm
 Er: 4.6
 Polygon Isolation: 6mil/0.1524mm
 RF Trace Width: 39mil/1.0mm
<https://chemandy.com/calculators/coplanar-waveguide-with-ground-calculator.htm>

External PTH Connectors



BlueSMiRF Connector



Sheet: /SparkFun_NEO-F10N-Connectors/
 File: SparkFun_NEO-F10N-Connectors.kicad_sch

Title:

Size: USLetter Date:
 KiCad E.D.A. eeschema 7.0.7

Rev:
 Id: 3/2