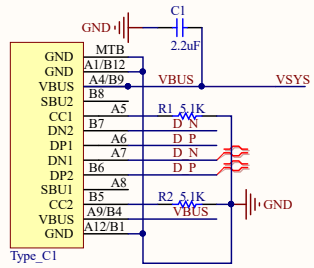
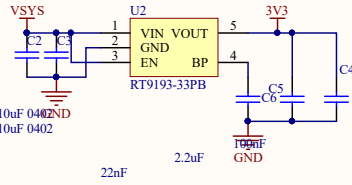


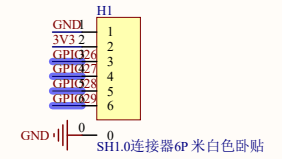
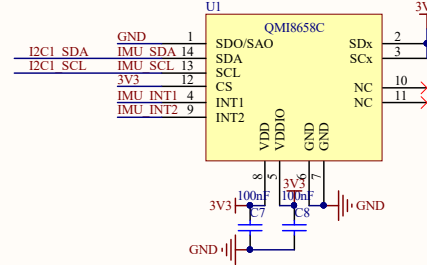
# Type-C



# POWER



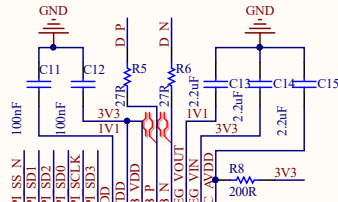
尽量居中放置



W<sub>aveshare</sub>

# RP2040-LCD-0.99

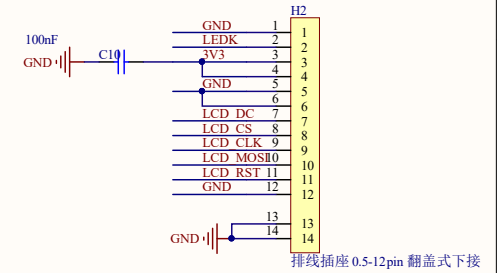
- I2C1\_SDA: GPIO6
- I2C1\_SCL: GPIO7
- IMU\_INT1: GPIO23
- IMU\_INT2: GPIO24
- LCD\_DC: GPIO8
- LCD\_CS: GPIO9
- LCD\_CLK: GPIO10
- LCD\_MOSI: GPIO11
- LCD\_MISO: GPIO12
- LCD\_RST: GPIO13
- LCD\_BL: GPIO25



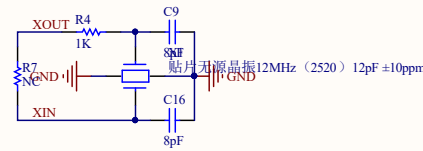
# KEY



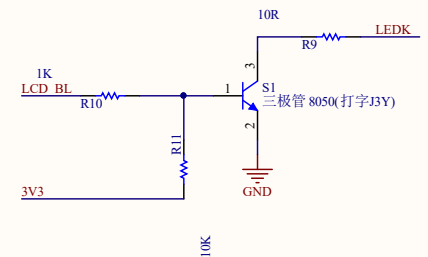
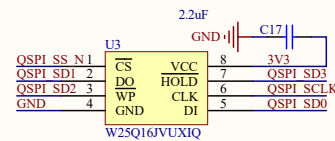
# LCD



# XTAL



# FLASH



# RP2040

