



**Cable ID: PCF6A-10CC-0050**

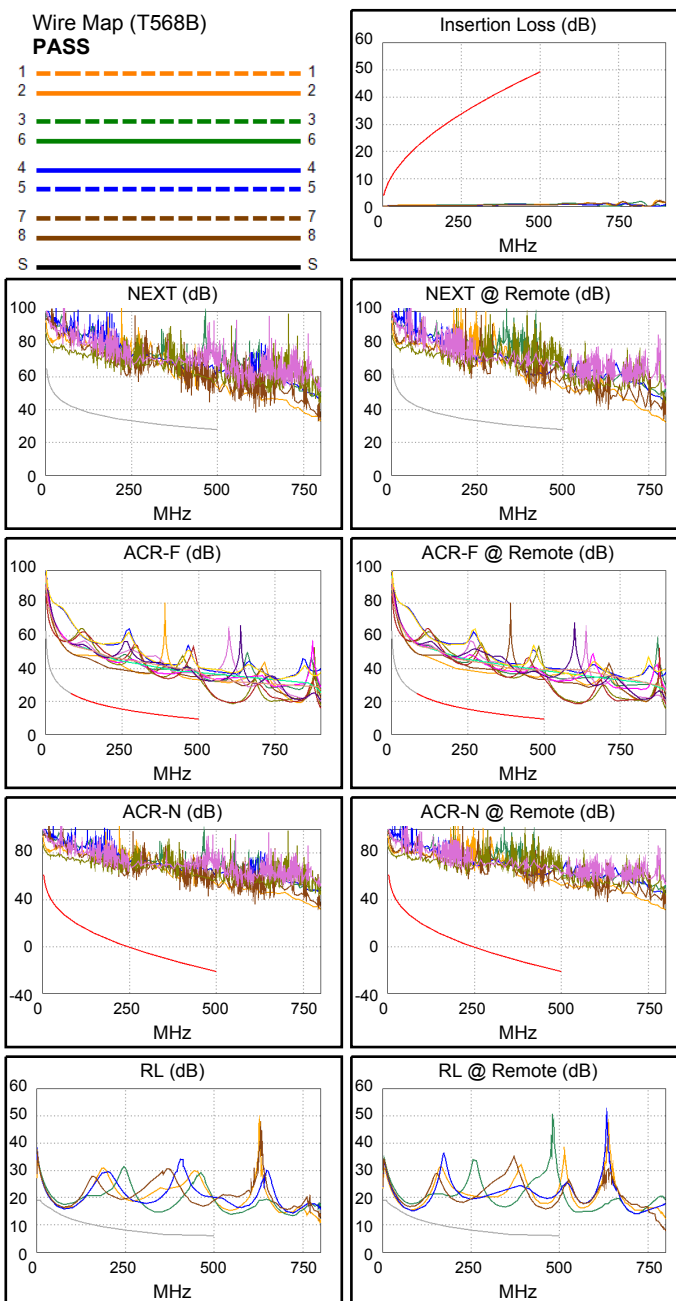
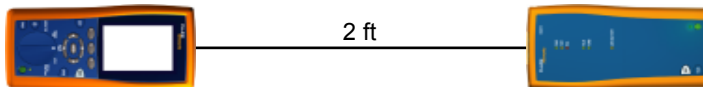
Date / Time: 02/28/2020 06:37:16 PM  
**Headroom 18.7 dB (NEXT 36-78)**  
**Test Limit: ISO11801 Channel Class Ea**  
 Cable Type: Cat 7 S/FTP  
 NVP: 76.0%

Operator: Your Name  
 Software Version: 2.7800  
 Limits Version: 1.9500  
 Calibration Date:  
 Main (Tester): 04/17/2010  
 Remote (Tester): 04/17/2010

**Test Summary: PASS**

Model: DTX-1800  
 Main S/N: 1290089  
 Remote S/N: 1290090  
 Main Adapter: DTX-CHA002  
 Remote Adapter: DTX-CHA002

Length (ft)	[Pair 12]	2
Prop. Delay (ns), Limit 555	[Pair 12]	2
Delay Skew (ns), Limit 50	[Pair 12]	0
Resistance (ohms), Limit 25.0	[Pair 12]	0.7
Insertion Loss Margin (dB)	[Pair 36]	44.2
Frequency (MHz)	[Pair 36]	425.0
Limit (dB)	[Pair 36]	45.1



**Worst Case Margin Worst Case Value**

N/A	MAIN	SR	MAIN	SR
Worst Pair	36-78	36-78	36-45	36-45
<b>NEXT (dB)</b>	19.4	18.7	19.8	23.7
Freq. (MHz)	2.8	3.0	476.0	421.0
Limit (dB)	65.0	65.0	28.3	29.2
Worst Pair	36	36	36	36
<b>PS NEXT (dB)</b>	21.2	20.6	22.2	25.2
Freq. (MHz)	3.1	3.0	476.0	421.0
Limit (dB)	62.0	62.0	25.2	26.2

PASS	MAIN	SR	MAIN	SR
Worst Pair	45-36	36-45	12-36	36-12
<b>ACR-F (dB)</b>	22.6	22.9	23.8	24.0
Freq. (MHz)	392.0	393.0	472.0	477.0
Limit (dB)	11.4	11.4	9.8	9.7
Worst Pair	45	45	36	36
<b>PS ACR-F (dB)</b>	24.0	23.1	24.4	24.2
Freq. (MHz)	378.0	386.0	500.0	500.0
Limit (dB)	8.7	8.5	6.3	6.3

PASS	MAIN	SR	MAIN	SR
Worst Pair	36-78	36-78	36-45	12-36
<b>ACR-N (dB)</b>	23.4	22.7	67.4	66.6
Freq. (MHz)	2.8	3.0	476.0	401.0
Limit (dB)	61.0	61.0	-19.7	-14.2
Worst Pair	36	36	36	36
<b>PS ACR-N (dB)</b>	25.2	24.6	69.7	69.2
Freq. (MHz)	3.1	3.0	476.0	421.0
Limit (dB)	58.0	58.0	-22.8	-18.7

N/A	MAIN	SR	MAIN	SR
Worst Pair	45	12	36	45
<b>RL (dB)</b>	2.3	2.0	7.9	2.4
Freq. (MHz)	62.3	59.3	339.0	84.5
Limit (dB)	14.1	14.3	6.7	12.7

Compliant Network Standards:  
 10BASE-T      100BASE-TX      100BASE-T4  
 1000BASE-T    2.5GBASE-T      5GBASE-T  
 10GBASE-T    ATM-25            ATM-51  
 ATM-155      100VG-AnyLan    TR-4  
 TR-16 Active    TR-16 Passive