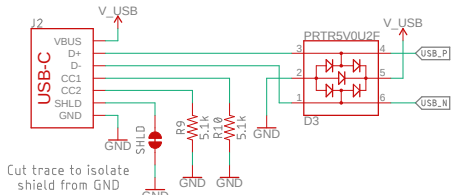
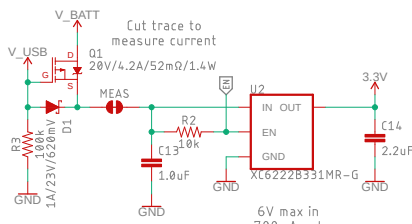


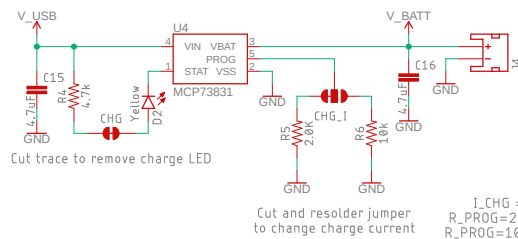
### USB-C Connector



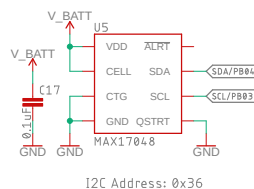
### Voltage Regulator



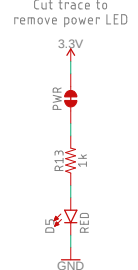
### Battery Charger



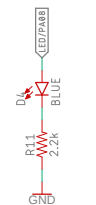
### Battery Fuel Gauge



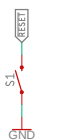
### Power LED



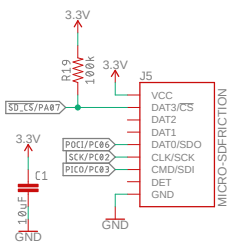
### Status LED



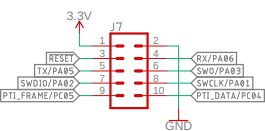
### Reset Button



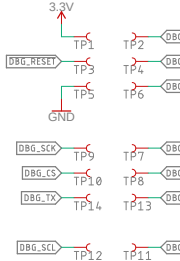
### USD Connector



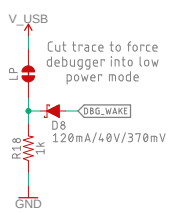
### Mini Simplicity Connector



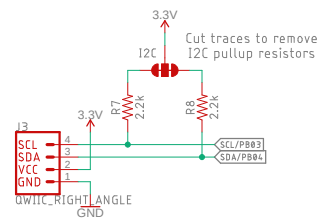
### J-Link Test Points



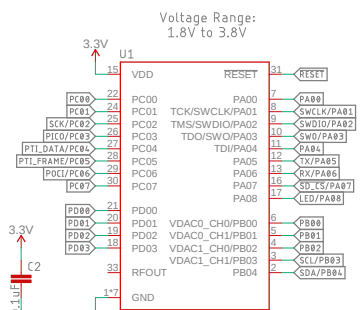
### J-Link OB Power Control



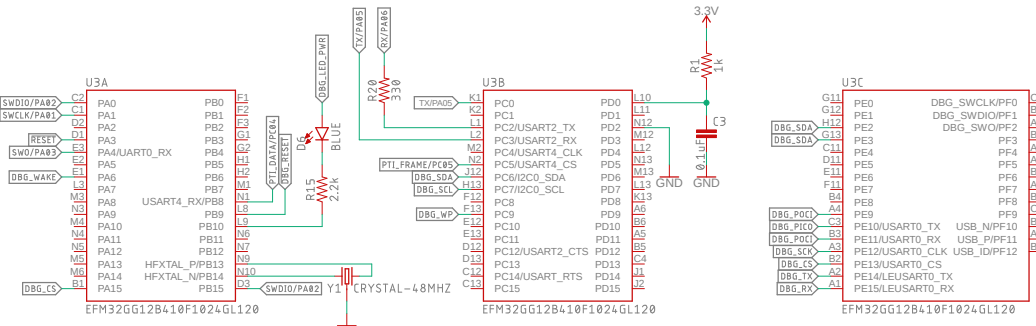
### Qwiic Connector



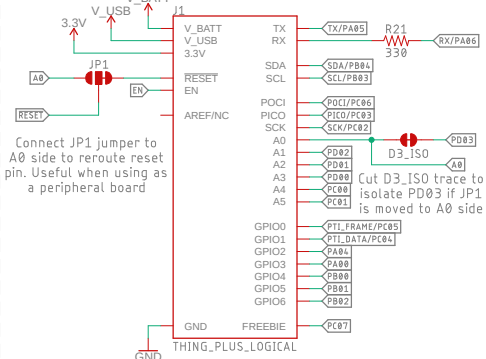
### MGM240P



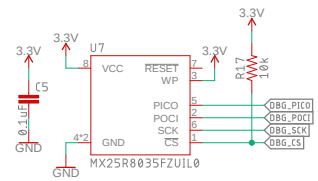
### J-Link OB Debugger



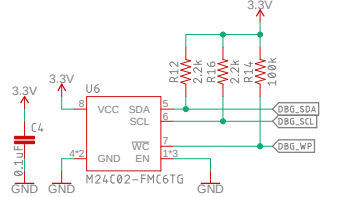
### Thing Plus Pinout



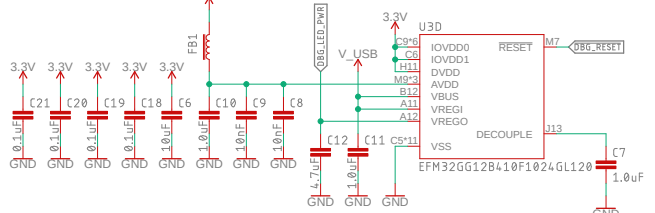
### Debugger Serial Flash



### Debugger Board ID



### Debugger Power



Released under the Creative Commons Attribution Share-Alike 4.0 License  
<https://creativecommons.org/licenses/by-sa/4.0/>

TITLE: Thing\_Plus\_MGM240P  
 Design by: Dryw Wade  
 Date: 10/6/2022 10:33 AM  
 REV: v10  
 Sheet: 1/1