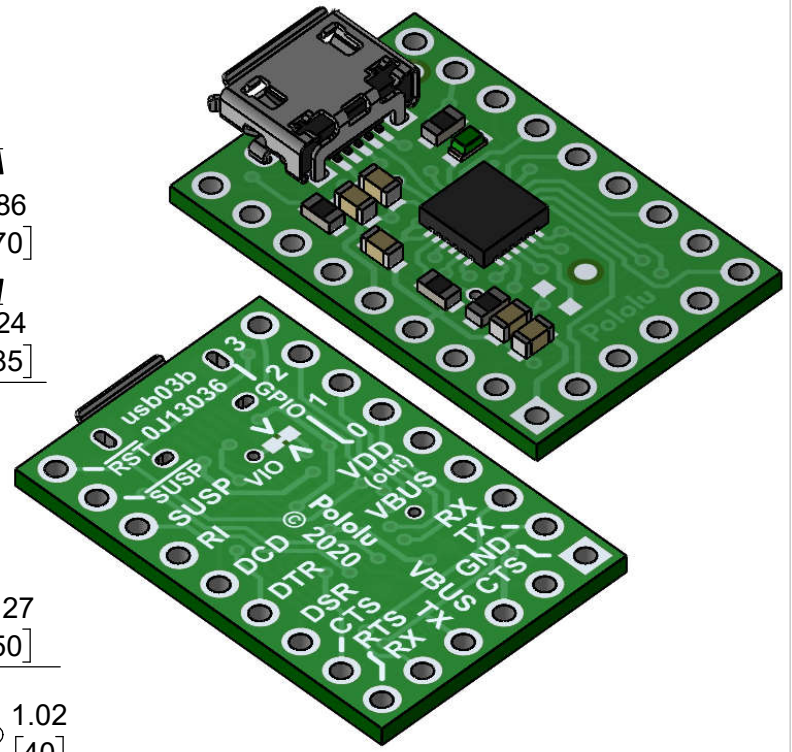
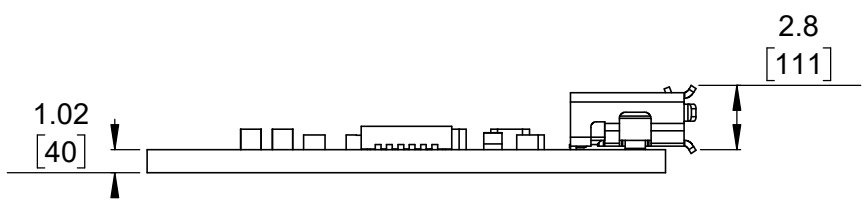


1 Board dimensions (top view)
Scale 3:1

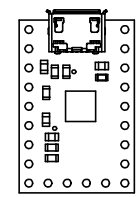
2 Connector callouts (bottom view)
Scale 3:1



3 Isometric view
Scale 3:1



4 Profile
Scale 3:1



5 Actual size
Scale 1:1

- To get the specified scale, select 100% in print settings.
- Drill location tolerance: ± 0.1 [± 5].
- Board edge tolerance: ± 0.3 [± 10].

https://www.pololu.com/product/1317	
Name: CP2102N USB-to-Serial Adapter Carrier	Item number: 1317
Drawing date: 17 September 2020	Dev code: usb03b
Units: mm [mil]	Material: mixed

