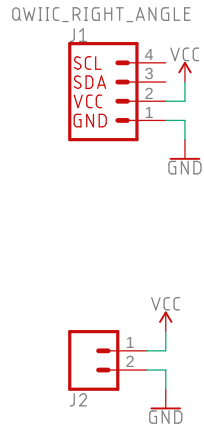
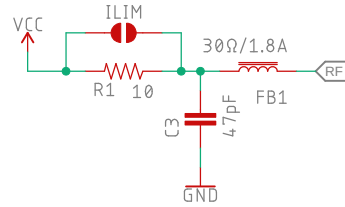


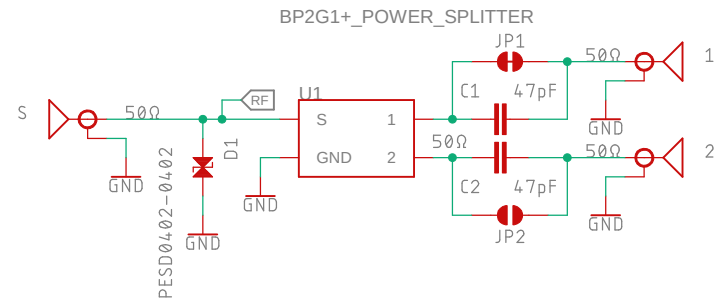
Connectors



VCC Current Limit and Filtering



Splitter



Notes:

====

The BP2G1+ is a 2-way 50Ω DC Pass Power Splitter for 1200 – 2000 MHz

Apply power from only one of:

Port 1 (Default)

Port 2

Qwiic

VCC

C1 and C2 are DC-blocking capacitors

Open JP1 to block DC power from Port 1 to Port S

Close JP2 to pass DC power from Port 2 to Port S

R1 is a 10Ω current-limiting resistor for Qwiic and VCC

Close the Ilim jumper to bypass R1

50Ω Traces:

=====

Width: 32 mil

Isolation (Gap): 5 mil

PCB thickness: 1.55 mm (61 mil)

Er: 4.5

Coplanar Wave Zo: 51.3Ω



Released under the Creative Commons

Attribution Share-Alike 4.0 License

<https://creativecommons.org/licenses/by-sa/4.0/>

Special Instructions

TITLE: GNSS_Splitter

Design by: Paul Clark

REV:
x01

Date: 26/09/2022 10:09

Sheet: 1/1