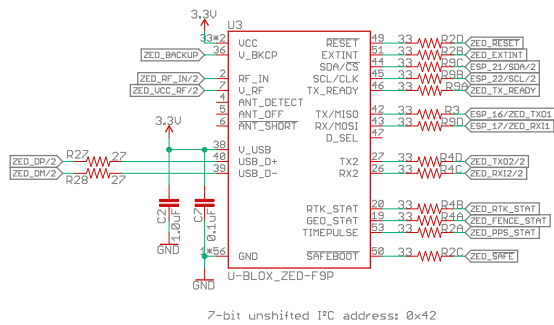
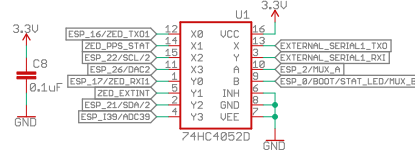


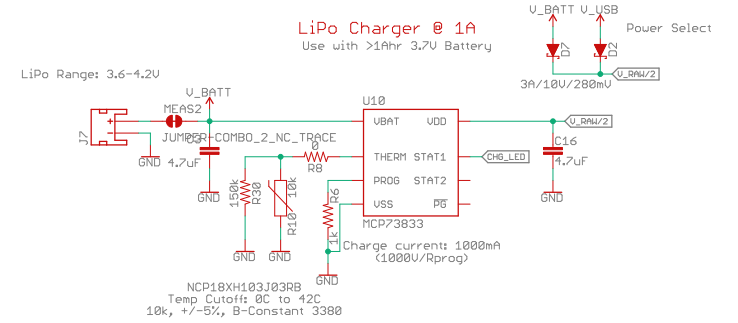
u-blox ZED-F9P



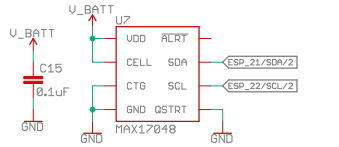
Data Output Selection



LiPo Charger @ 1A

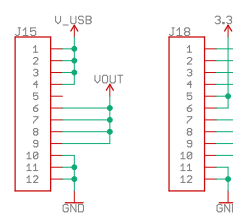


Fuel Gauge

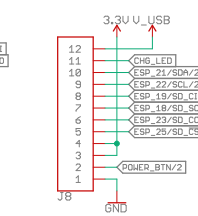


Connections

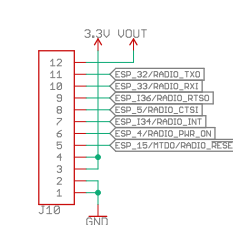
From Connectors Board



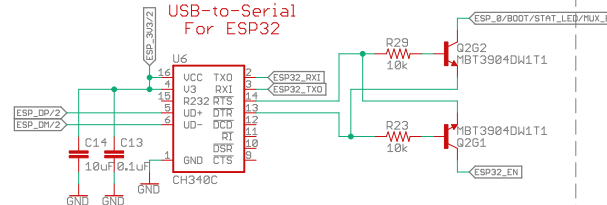
From Display Board



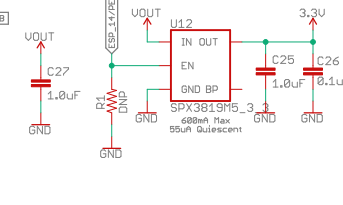
From Radio Board



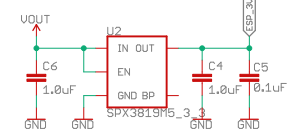
USB-to-Serial For ESP32



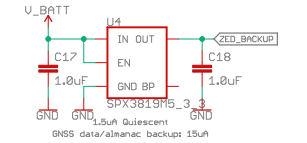
Peripheral 3.3V



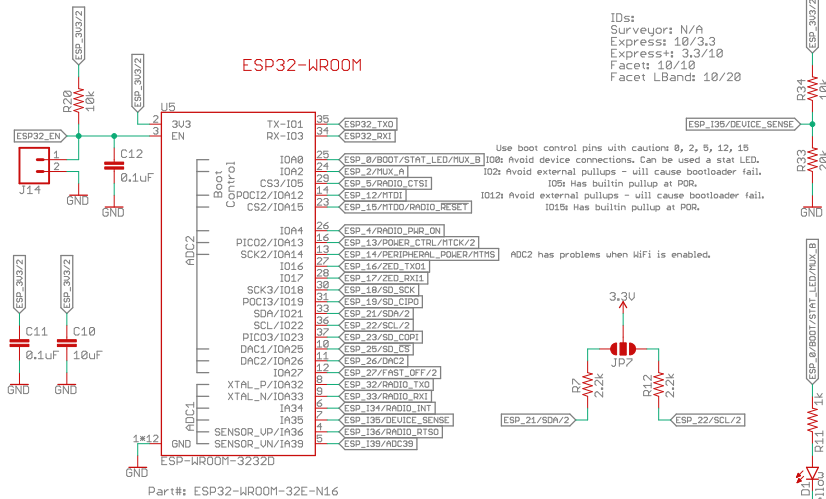
ESP32 3.3V



RTC Backup



ESP32-WROOM

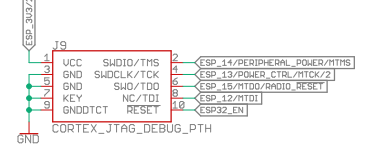


IDs:
 Surveyor: N/A
 Express: 10/3.3
 Express+: 3.3/10
 Facet: 10/10
 Facet LBand: 10/20

Use boot control pins with caution! 0, 2, 5, 12, 15
 100: Avoid device connections. Can be used a stat LED.
 102: Avoid external pullups - will cause bootloader fail.
 105: Has builtin pullup at POR.
 1012: Avoid external pullups - will cause bootloader fail.
 1015: Has builtin pullup at POR.

ADC2 has problems when WiFi is enabled.

JTAG



Special Instructions

No clean process



Released under the Creative Commons Attribution Share-Alike 4.0 License
<https://creativecommons.org/licenses/by-sa/4.0/>

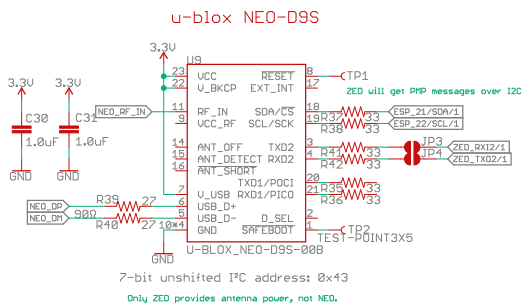
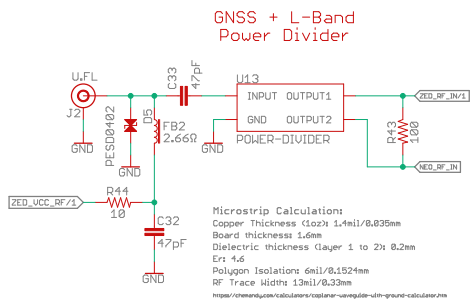
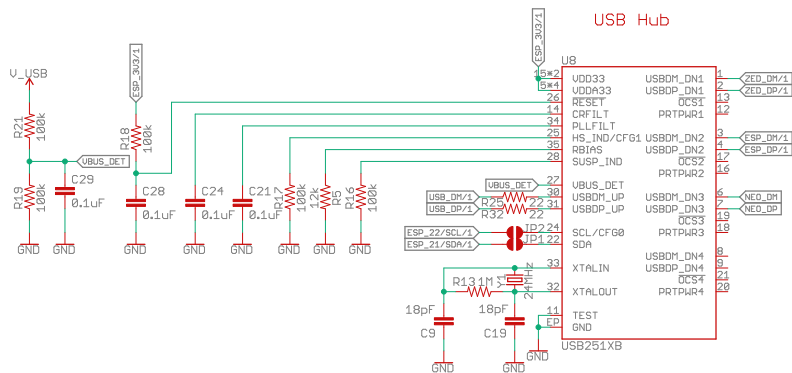
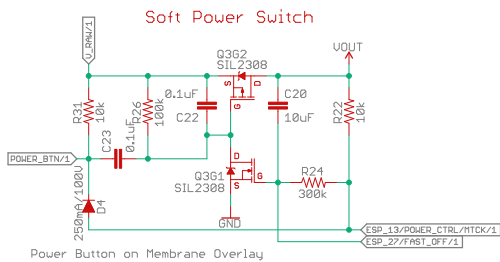
TITLE: SparkFun RTK Facet LBand - Main

Design by: N. Seidle

REV: v10

Date: 5/19/2022 11:56 AM

Sheet: 1/2



Released under the Creative Commons
Attribution Share-Alike 4.0 License
<https://creativecommons.org/licenses/by-sa/4.0/>

TITLE: SparkFun RTK Facet LBand - Main

Design by: _____ REV: _____

Date: 5/19/2022 11:56 AM

Sheet: 2/2