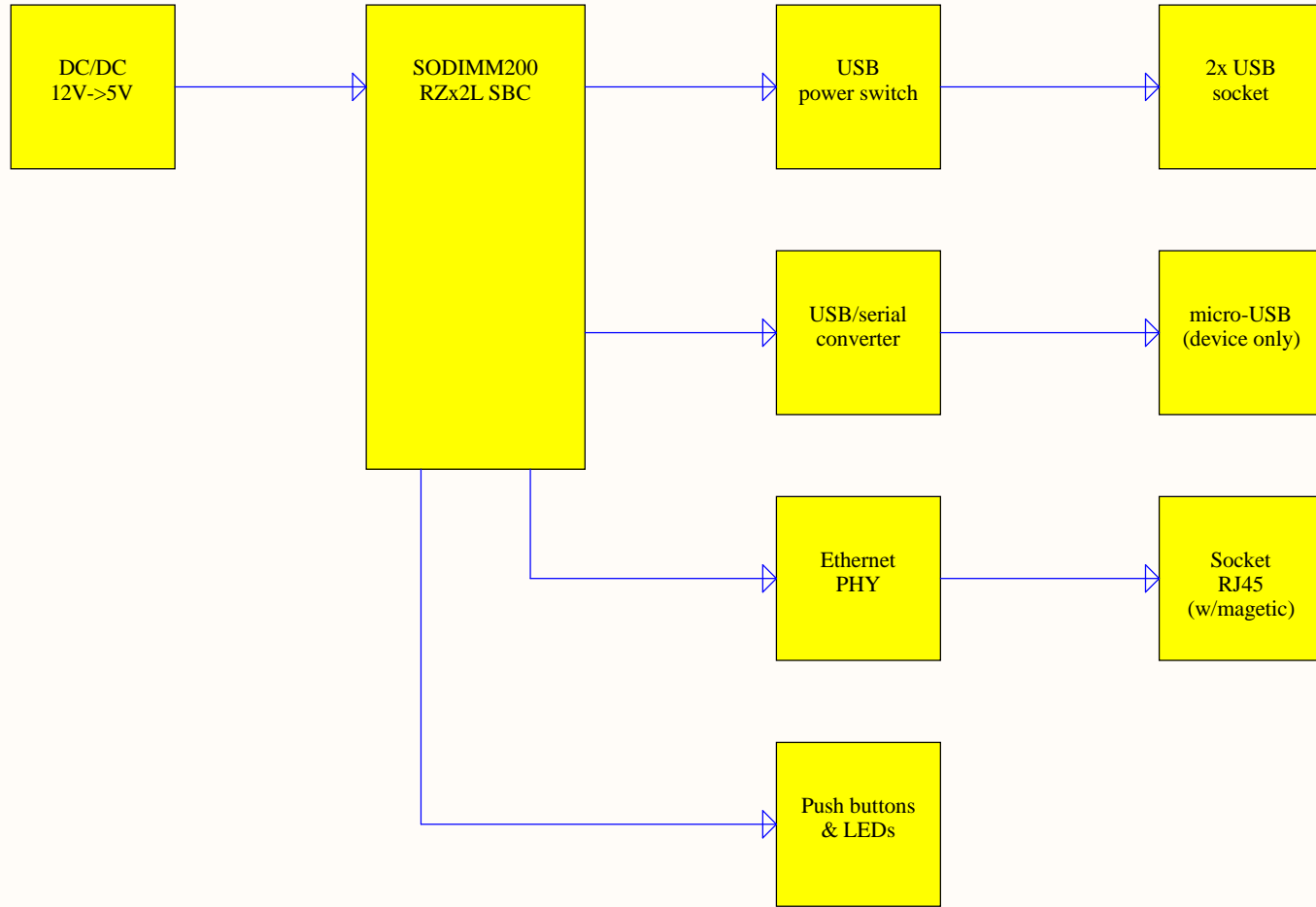


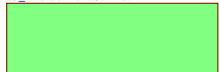
# Block diagram



U\_02\_PowerTree  
02\_PowerTree.SchDoc

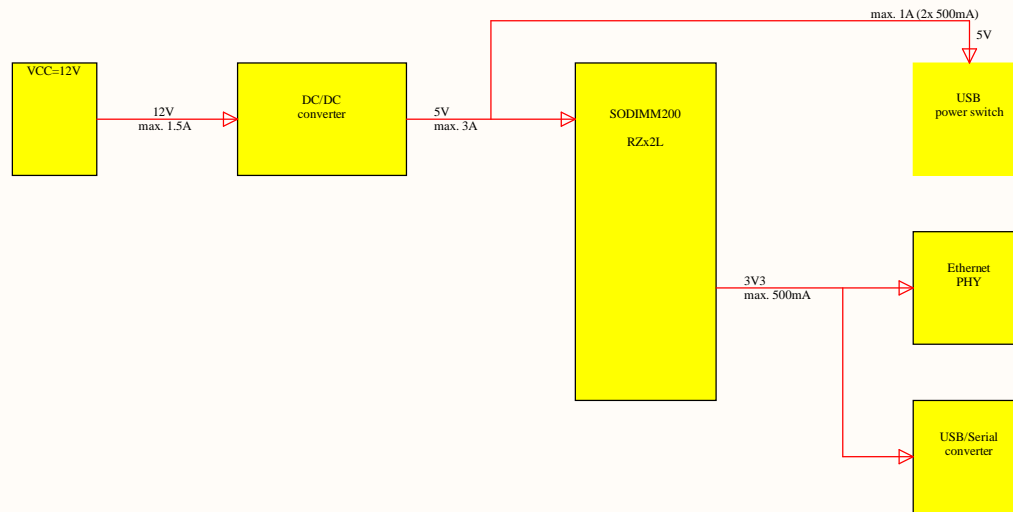


U\_03\_Interconnect  
03\_Interconnect.SchDoc



Title		
Size A3	Number	Revision
Date: 8.28.2023	Sheet of	
File: D:\Projekty\...01_BlockDiagram.SchDoc	Drawn By:	

# Power tree



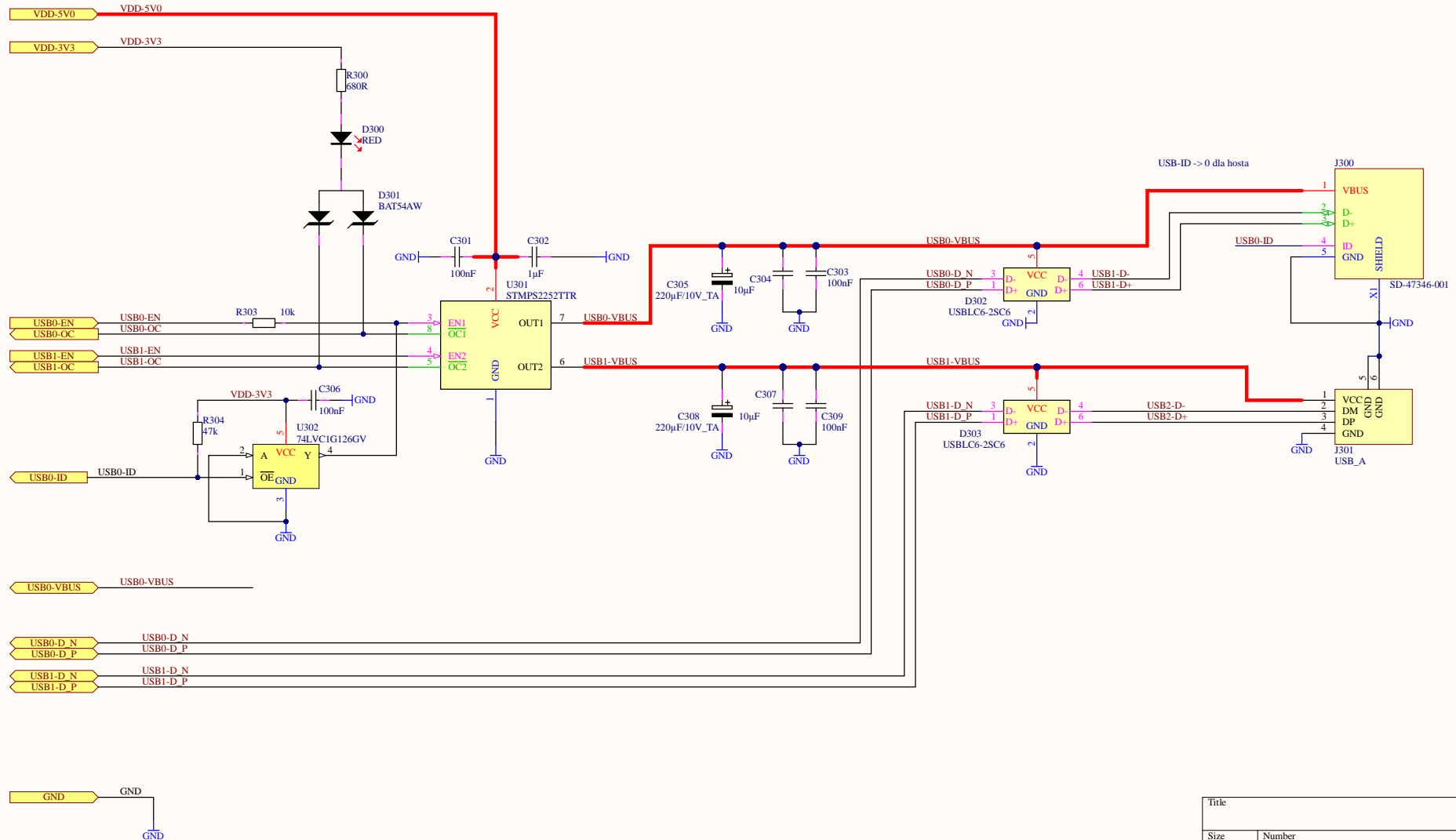
Title		
Size	Number	Revision
A3		
Date:	8.28.2023	Sheet of
File:	D:\Projekty\...02_PowerTree.SchDoc	Drawn By:





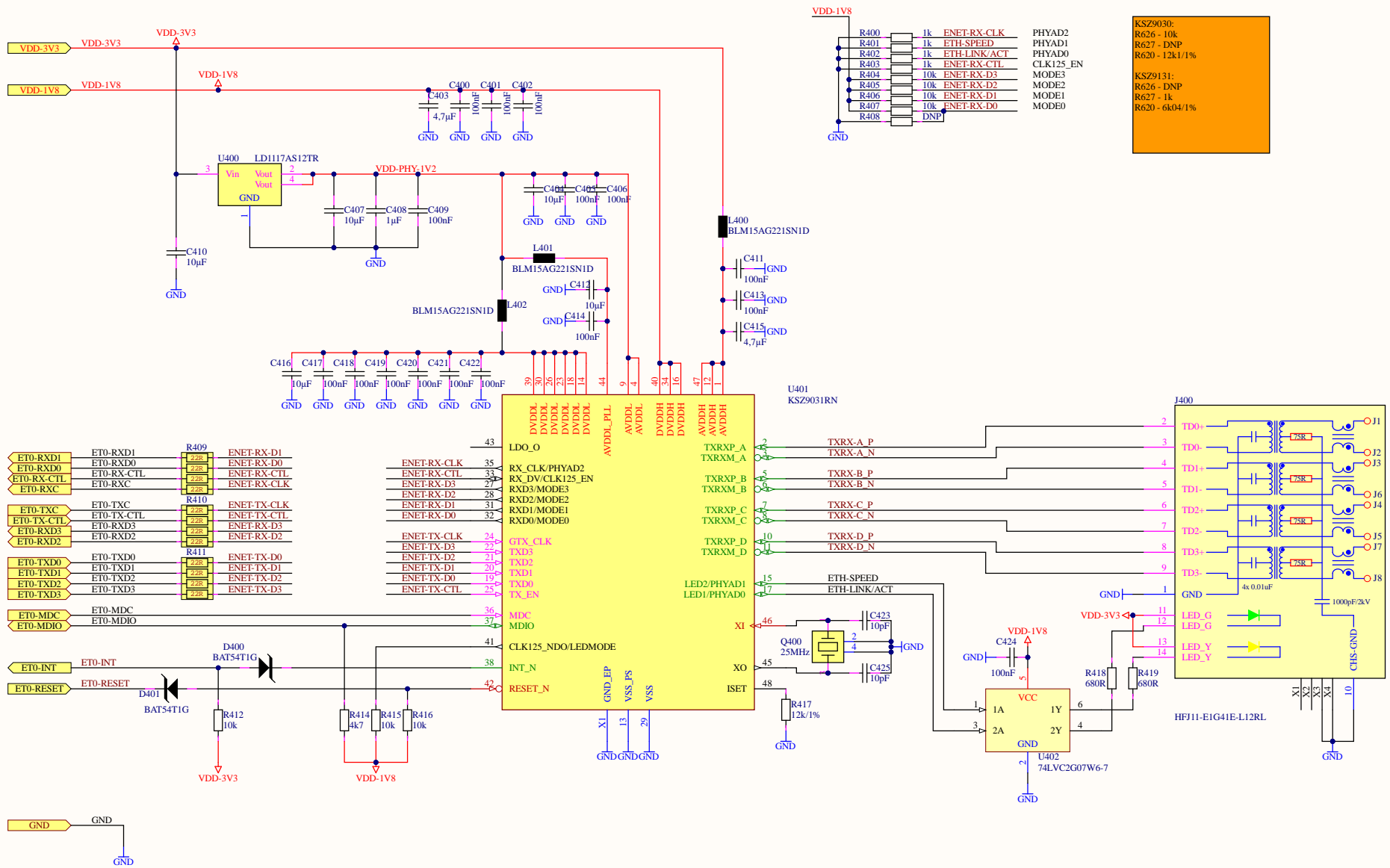


# USB interfaces



Title		
Size	Number	Revision
A3		
Date:	8.28.2023	Sheet of
File:	D:\Projekt\1_06_USBInterface.SchDoc	Drawn By:

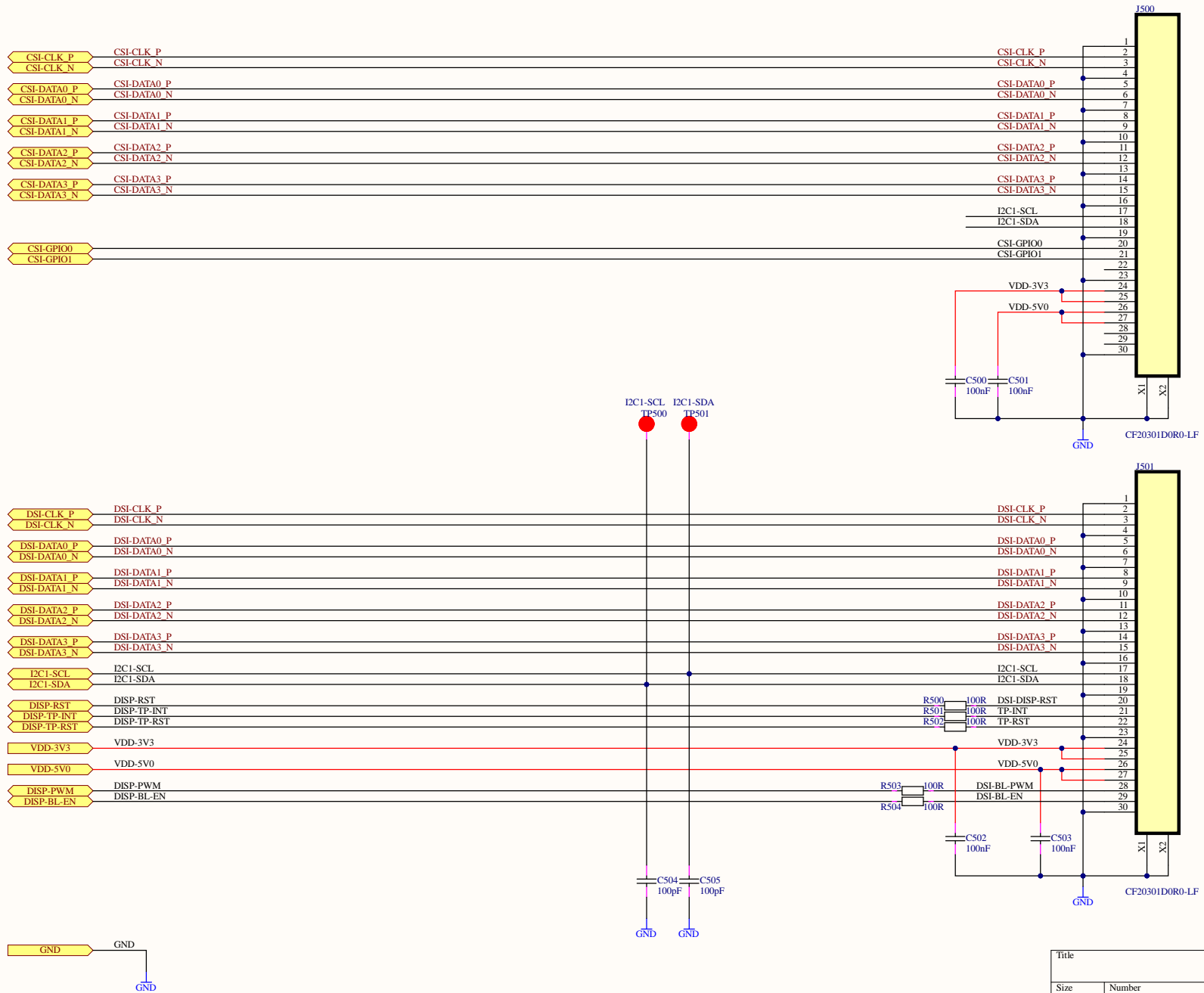
# Gigabit Ethernet



KSZ9030:	PHYAD2
R626 - 10k	PHYAD1
R627 - DNP	PHYAD0
R620 - 12k1/1%	CLK125_EN
KSZ9131:	MODE3
R626 - DNP	MODE2
R627 - 1k	MODE1
R620 - 6k04/1%	MODE0

Title		
Size	Number	Revision
A3		
Date:	8.28.2023	Sheet of
File:	D:\Projekt\...07_EthInterface.SchDoc	Drawn By:

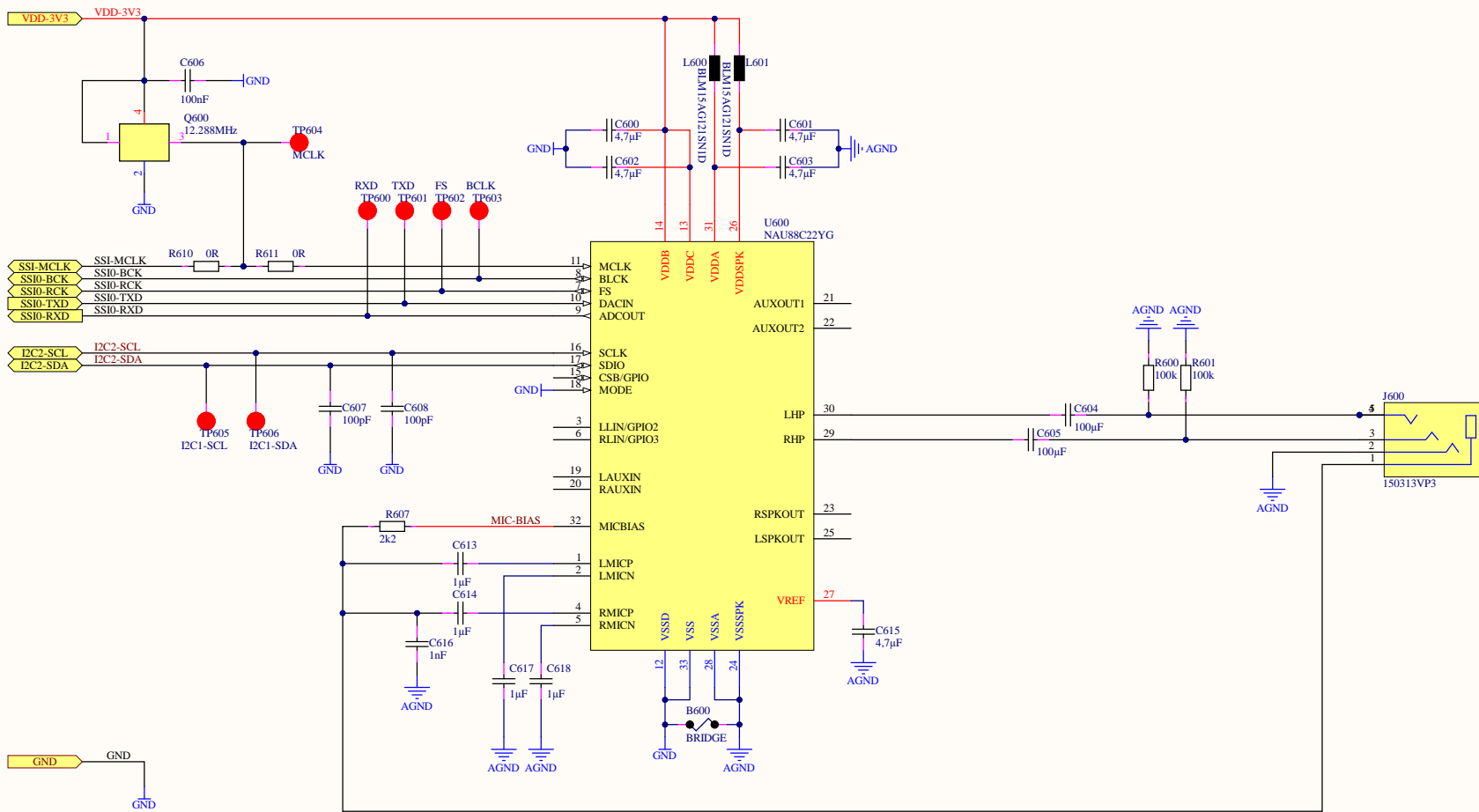
# Camera & Display IF



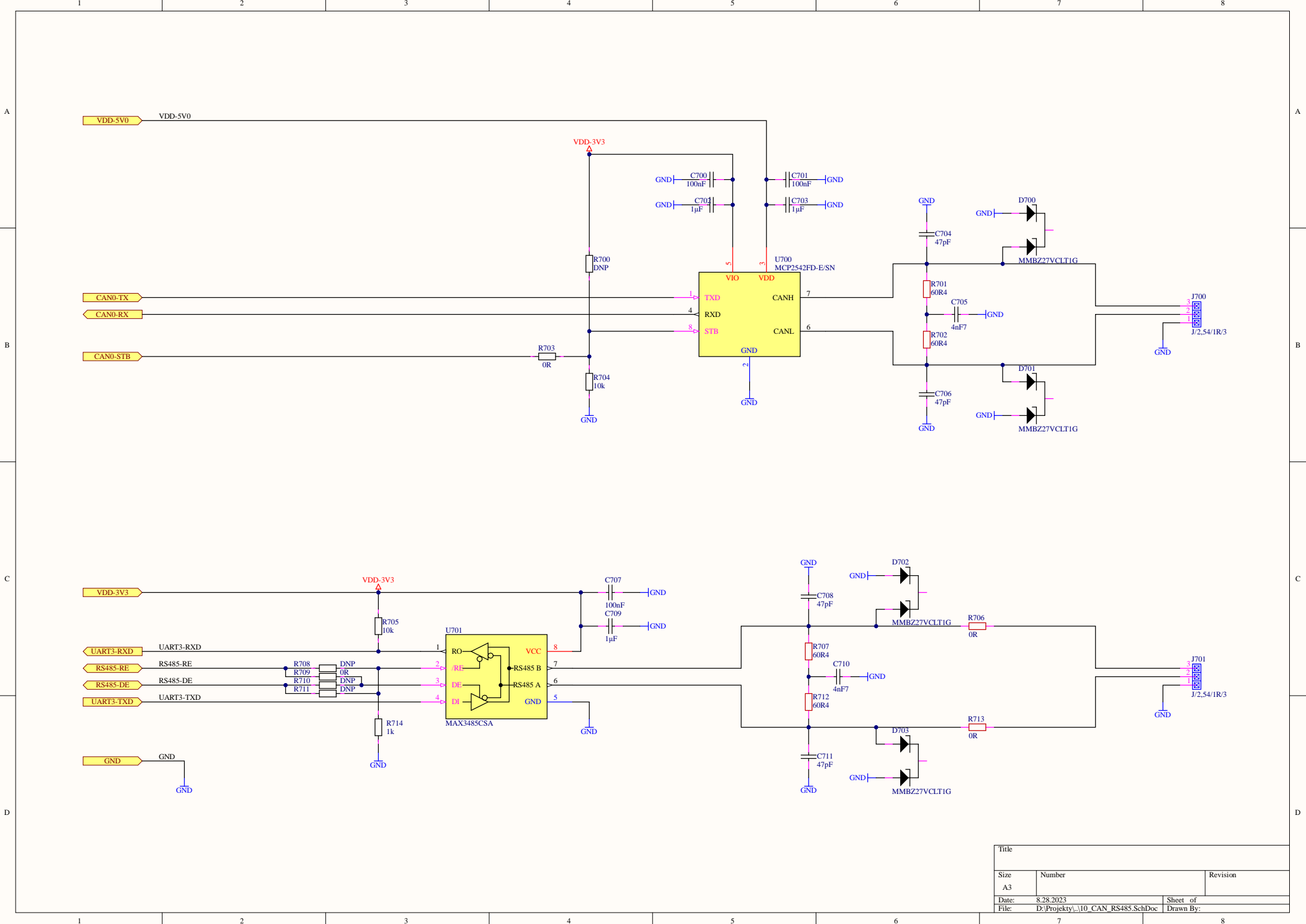
Title		
Size	Number	Revision
A3		
Date:	8.28.2023	Sheet of
File:	D:\Projekty\08_DisplayCamera\FSch	Drawn By:



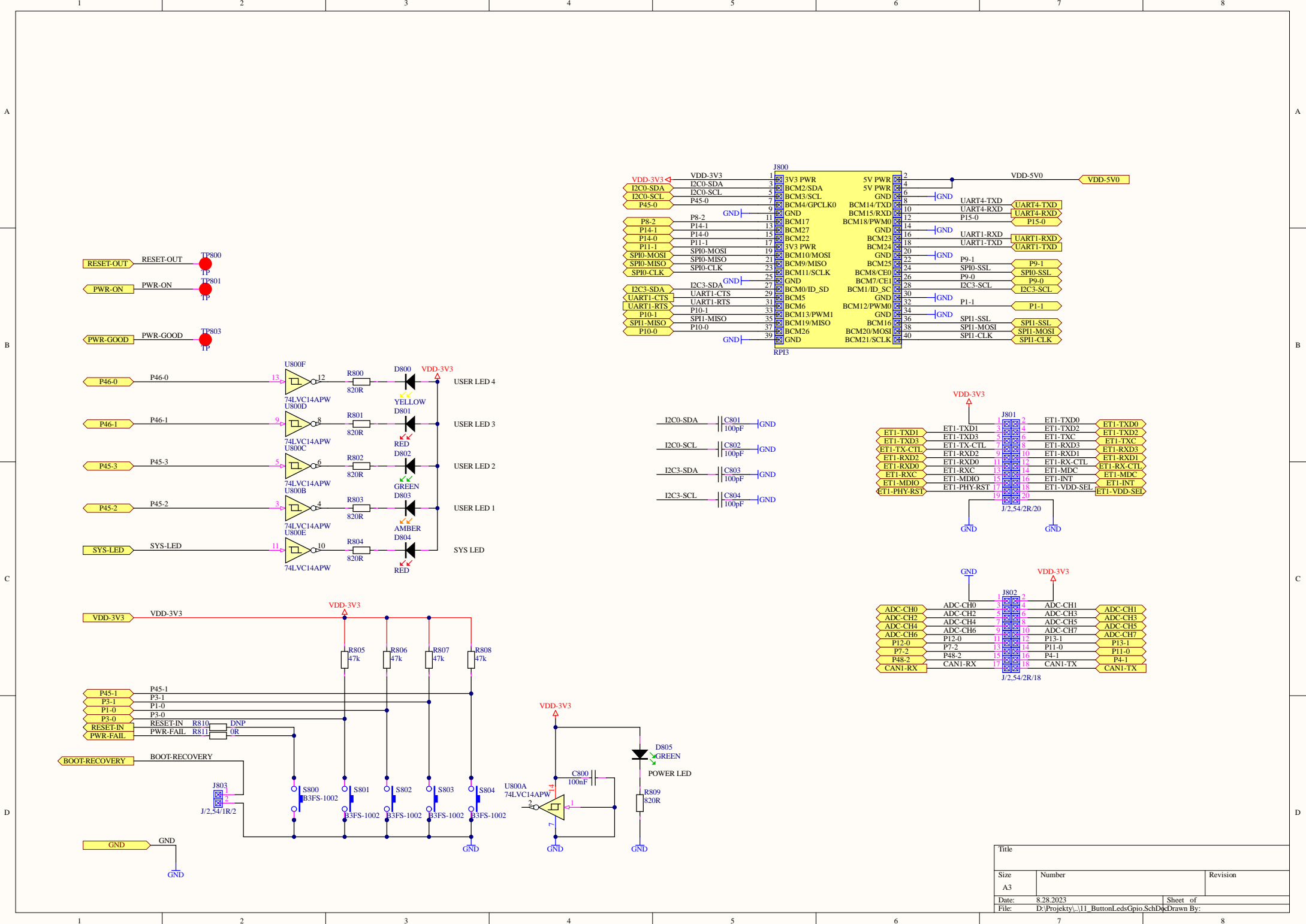
# AUDIO-CODEC



Title		
Size	Number	Revision
A3		
Date:	8.28.2023	Sheet of
File:	D:\Projekt\...09_AudioCodec.SchDoc	Drawn By:



Title		
Size	Number	Revision
A3		
Date:	8.28.2023	Sheet of
File:	D:\Projekty\10_CAN_RS485.SchDoc	Drawn By:



**J800**

VDD-3V3	VDD-3V3	1	3V3 PWR	2	VDD-5V0	VDD-5V0
I2C0-SDA	I2C0-SDA	3	5V PWR	4		
I2C0-SCL	I2C0-SCL	5	BCM2/SDA	5		
P45-0	P45-0	7	BCM3/SCL	6		
		9	BCM4/GPCLK0	8	UART4-TXD	UART4-TXD
P8-2	P8-2	11	GND	10	UART4-RXD	UART4-RXD
P14-1	P14-1	13	BCM14/TXD	12	P15-0	P15-0
P14-0	P14-0	15	BCM17	14		
P11-1	P11-1	17	BCM27	16	UART1-RXD	UART1-RXD
SPI0-MOSI	SPI0-MOSI	19	BCM22	18	UART1-TXD	UART1-TXD
SPI0-MISO	SPI0-MISO	21	BCM24	20		
SPI0-CLK	SPI0-CLK	23	3V3 PWR	22		
		25	BCM10/MOSI	24	P9-1	P9-1
I2C3-SDA	I2C3-SDA	27	BCM9/MISO	26	SPI0-SSL	SPI0-SSL
UART1-CTS	UART1-CTS	29	BCM11/SCLK	28	P9-0	P9-0
UART1-RTS	UART1-RTS	31	GND	30	I2C3-SCL	I2C3-SCL
P10-1	P10-1	33	BCM0/ID_SD	32		
SPI1-MISO	SPI1-MISO	35	BCM5	34	P1-1	P1-1
P10-0	P10-0	37	BCM6	36		
		39	BCM13/PWM1	38	SPI1-SSL	SPI1-SSL
			BCM19/MISO	40	SPI1-MOSI	SPI1-MOSI
			BCM26		SPI1-CLK	SPI1-CLK
			GND			

I2C0-SDA	C801	100pF	GND
I2C0-SCL	C802	100pF	GND
I2C3-SDA	C803	100pF	GND
I2C3-SCL	C804	100pF	GND

**J801**

ETI-TXD1	ETI-TXD1	2	ETI-TXD0	ETI-TXD0
ETI-TXD3	ETI-TXD3	4	ETI-TXD2	ETI-TXD2
ETI-TX-CTL	ETI-TX-CTL	6	ETI-TXC	ETI-TXC
ETI-RXD2	ETI-RXD2	8	ETI-RXD3	ETI-RXD3
ETI-RXD0	ETI-RXD0	10	ETI-RXD1	ETI-RXD1
ETI-RXC	ETI-RXC	12	ETI-RX-CTL	ETI-RX-CTL
ETI-MDIO	ETI-MDIO	14	ETI-MDC	ETI-MDC
ETI-PHY-RST	ETI-PHY-RST	16	ETI-INT	ETI-INT
		18	ETI-VDD-SEL	ETI-VDD-SEL
		20		

J/2,54/2R/20

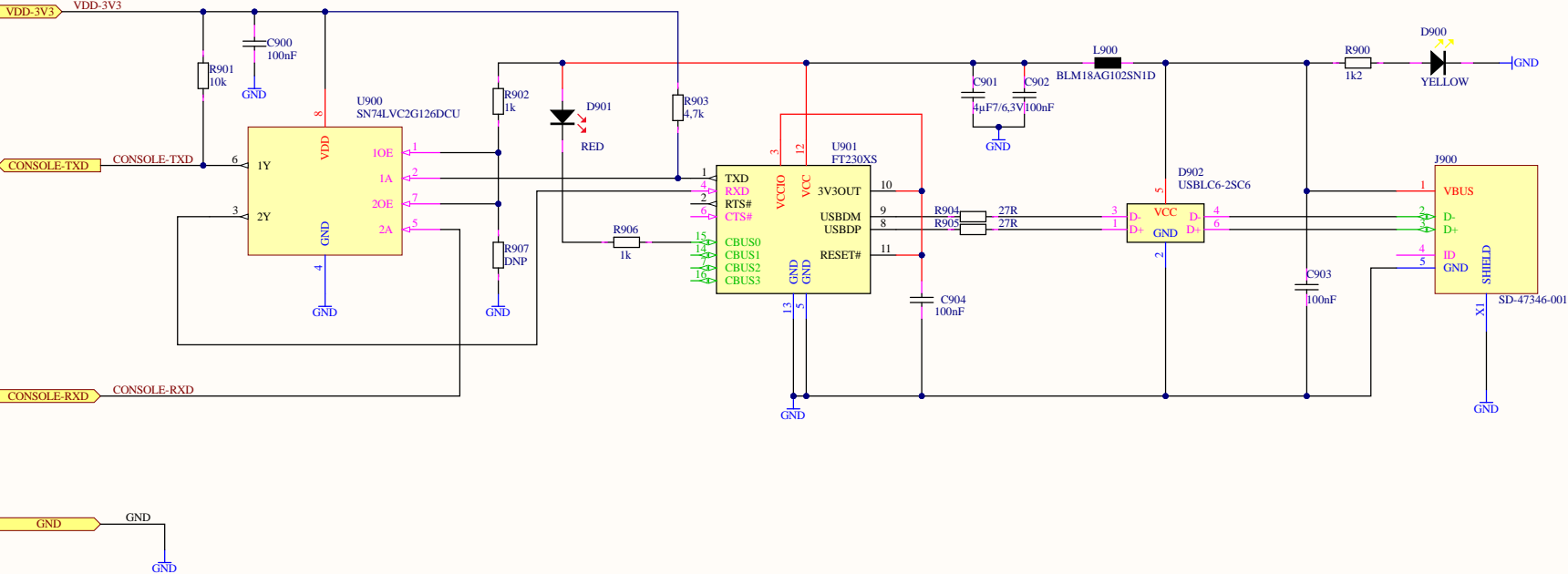
**J802**

ADC-CH0	ADC-CH0	2	ADC-CH1	ADC-CH1
ADC-CH2	ADC-CH2	4	ADC-CH3	ADC-CH3
ADC-CH4	ADC-CH4	6	ADC-CH5	ADC-CH5
ADC-CH6	ADC-CH6	8	ADC-CH7	ADC-CH7
P12-0	P12-0	10	P13-1	ADC-CH7
P7-2	P7-2	12	P11-0	P13-1
P48-2	P48-2	14	P4-1	P13-1
CAN1-RX	CAN1-RX	16	CAN1-TX	P4-1
		18		

J/2,54/2R/18

Title		
Size	Number	Revision
A3		
Date:	8.28.2023	Sheet of
File:	D:\Projekty\11_ButtonLedsGpio_SchDk	Drawn By:

# Serial Console over USB



Title		
Size	Number	Revision
A3		
Date:	8.28.2023	Sheet of
File:	D:\Projekty\112_Debug\IF_SchDoc	Drawn By: