



**Cable ID: PCU6-10CC-1000-S**

Date / Time: 07/04/2019 02:23:33 PM

Headroom 13.9 dB (NEXT 36-45)

Test Limit: TIA Cat 6 Channel

Cable Type: Cat 6 U/UTP

NVP: 69.0%

Software Version: V6.2 Build 1

Limits Version: V7.2

Calibration Start Date:

Main (Module): 12/03/2018

Remote (Module): 12/03/2018

**Test Summary: PASS**

Model: DSX-8000

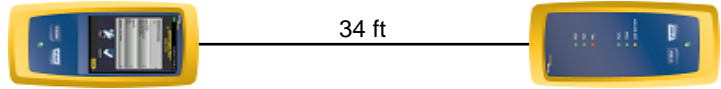
Main S/N: 1820302

Remote S/N: 1824298

Main Adapter: DSX-CHA804

Remote Adapter: DSX-CHA804

Length (ft), Limit 328	[Pair 12]	34
Prop. Delay (ns), Limit 555	[Pair 45]	54
Delay Skew (ns), Limit 50	[Pair 45]	3
Resistance (ohms)	[Pair 36]	7.01
Insertion Loss Margin (dB)	[Pair 36]	29.2
Frequency (MHz)	[Pair 36]	250.0
Limit (dB)	[Pair 36]	35.9

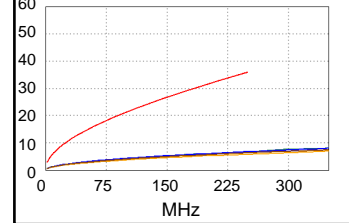


Wire Map (T568B)

**PASS**

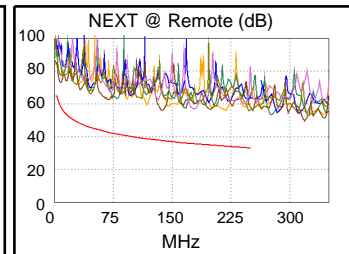
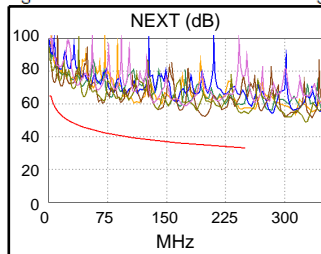


Insertion Loss (dB)

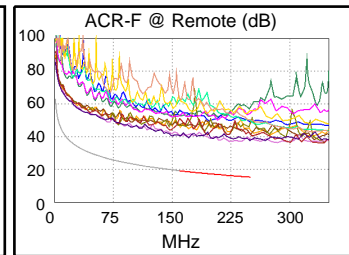
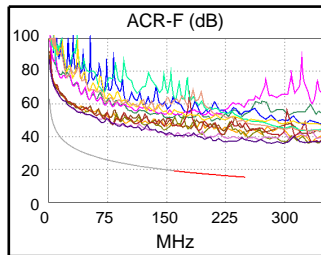


Worst Case Margin Worst Case Value

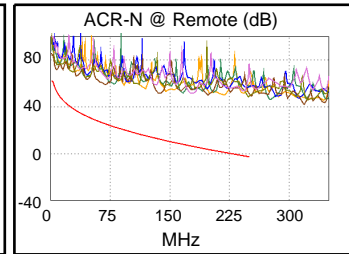
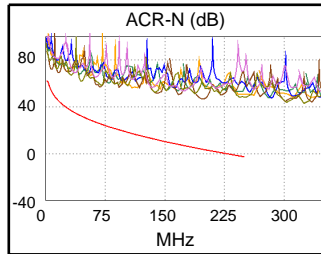
PASS	MAIN	SR	MAIN	SR
Worst Pair	36-45	36-45	36-45	36-78
<b>NEXT (dB)</b>	13.9	13.9	17.7	21.8
Freq. (MHz)	6.8	6.4	198.5	249.5
Limit (dB)	59.4	59.8	34.8	33.1
Worst Pair	36	36	36	36
<b>PS NEXT (dB)</b>	15.4	15.2	20.0	22.6
Freq. (MHz)	6.3	7.0	199.5	250.0
Limit (dB)	57.4	56.6	31.9	30.2



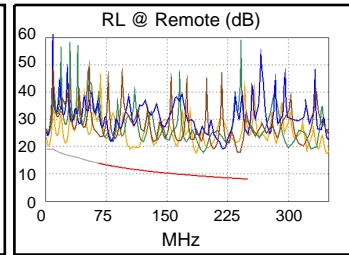
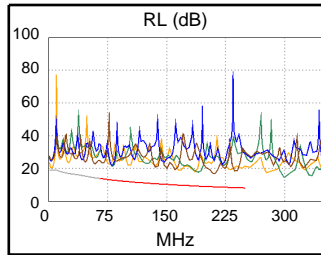
PASS	MAIN	SR	MAIN	SR
Worst Pair	78-36	78-36	78-36	36-78
<b>ACR-F (dB)</b>	20.5	20.7	20.6	20.9
Freq. (MHz)	224.0	151.0	226.0	225.0
Limit (dB)	16.3	19.7	16.2	16.2
Worst Pair	36	36	36	36
<b>PS ACR-F (dB)</b>	21.7	21.5	21.7	23.3
Freq. (MHz)	222.5	149.5	222.5	250.0
Limit (dB)	13.3	16.8	13.3	12.3



N/A	MAIN	SR	MAIN	SR
Worst Pair	36-45	36-45	36-45	36-78
<b>ACR-N (dB)</b>	17.8	17.9	43.1	51.4
Freq. (MHz)	6.1	6.4	198.5	249.5
Limit (dB)	55.1	54.7	3.4	-2.8
Worst Pair	36	36	36	36
<b>PS ACR-N (dB)</b>	19.2	19.1	50.9	51.9
Freq. (MHz)	5.6	6.4	244.0	250.0
Limit (dB)	53.4	52.2	-5.1	-5.8



PASS	MAIN	SR	MAIN	SR
Worst Pair	78	12	78	78
<b>RL (dB)</b>	7.9	7.2	7.9	9.2
Freq. (MHz)	211.0	104.0	211.0	239.0
Limit (dB)	8.8	11.8	8.8	8.2



Compliant Network Standards:

10BASE-T	100BASE-TX	100BASE-T4
1000BASE-T	2.5GBASE-T	5GBASE-T
ATM-25	ATM-51	ATM-155
100VG-AnyLan	TR-4	TR-16 Active
TR-16 Passive		