

# PoE HAT

for Raspberry Pi

## CONTACT US

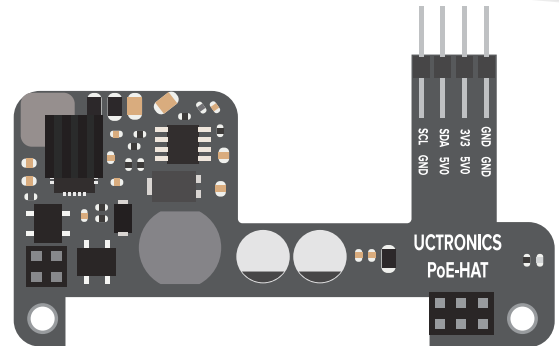
If any problem, feel free to contact us.

Website: [www.uctronics.com](http://www.uctronics.com)

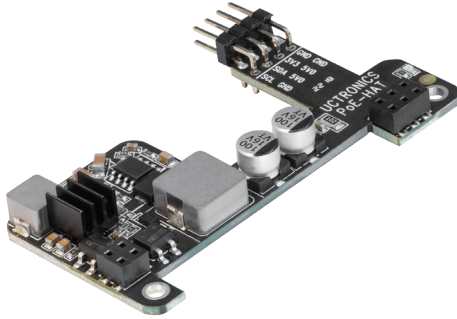
Email: [support@uctronics.com](mailto:support@uctronics.com)



UCTRONICS  
[www.uctronics.com](http://www.uctronics.com)



## Installation



**UCTRONICS PoE HAT** for Raspberry Pi is to use with the Raspberry Pi models with PoE pins like Raspberry Pi 3 Model B+ and Raspberry Pi 4 Model B, so you can power the Raspberry Pi with a single Ethernet cable plugged in.

**Note: You will need PSE (Power Supply Equipment) to supply PoE signal to the Raspberry Pi, such as a PoE switch or injector.**

This PoE HAT should be operated in a well-ventilated environment, and should not be covered.

Package including:

- 1 × UCTRONICS PoE HAT for Raspberry Pi
- 1 × Manual

## Specifications

Input: IEEE 802.3af compatible PoE

Output: 5V (2.5A MAX)

Total Power Budget: 12.5W

Overall Size: 65mm × 40mm × 8mm

Weight: 11g

## Physical specifications

