

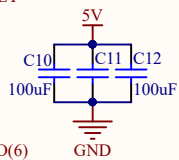
BCM	wPi	Pi 3V3	P1	Pi	BCM
2	8	P_SDA	1	2	5V
3	9	P_SCL	3	4	5V
4	7	P4	5	6	GND
		GND	7	8	P_RX
17	0	P17	9	10	P_TX
27	2	P27	11	12	P18
22	3	P22	13	14	GND
		3V3 Pi	15	16	P23
10	12	P_MOSI	17	18	P24
9	13	P_MISO	19	20	GND
11	14	P_SCK	21	22	P25
		GND	23	24	P_CE0
		ID_SD	25	26	P_CE1
5	21	P5	27	28	ID_SC
6	22	P6	29	30	GND
13	23	P13	31	32	P12
19	24	P19	33	34	GND
26	25	P26	35	36	P16
		GND	37	38	P20
			39	40	P21

RPI GPIO

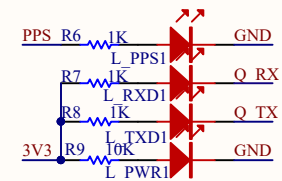
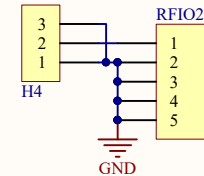
Raspberry Interface

P2	
GND	53
X	54
X	51
X	52
X	49
X	50
X	47
X	48
X	45
X	46
X	43
X	44
X	41
X	42
X	39
X	40
X	37
X	38
X	35
X	36
X	33
X	34
PPS	I2C_SDA
GND	31
GND	32
GND	29
GND	30
GND	I2C_SCL
GND	27
GND	28
SX1302_CS	X
SX1302_MOSI	X
GND	23
GND	24
SX1302_MISO	X
SX1302_SCK	X
GND	SX1302_RESET
GND	21
GND	22
GND	X
GND	GND
GND	POWER_EN
X	15
X	16
X	13
X	14
X	11
X	12
X	9
X	10
X	7
X	8
X	SX1302_GPIO(6)
X	GND
X	5
X	6
X	3
X	4
X	5V
X	1
X	2

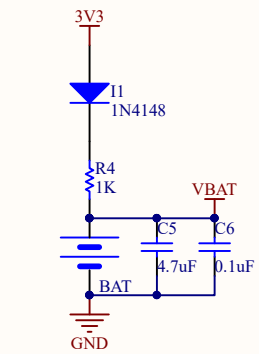
miniPCI-E Interface



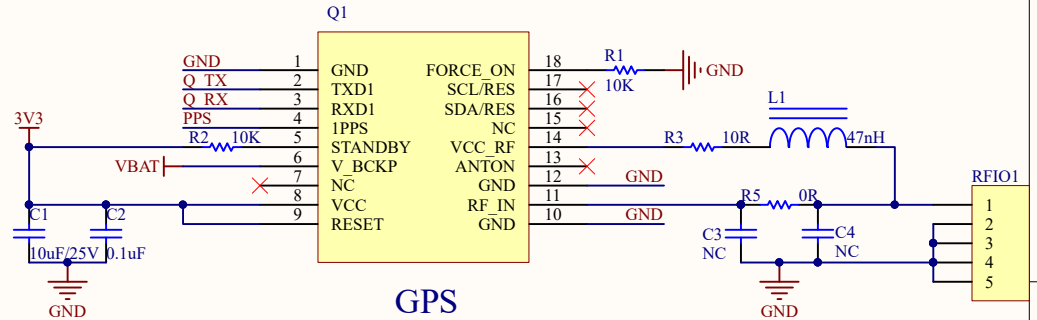
SX1302_CS	P_CE0
SX1302_MOSI	P_MOSI
SX1302_MISO	P_MISO
SX1302_SCK	P_SCK
I2C_SDA	P_SDA
I2C_SCL	P_SCL
POWER_EN	P18
SX1302_RESET	P23
SX1302_GPIO(6)	P20



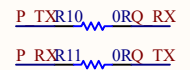
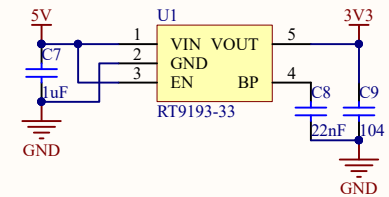
Indicator light



GPS Backup Power



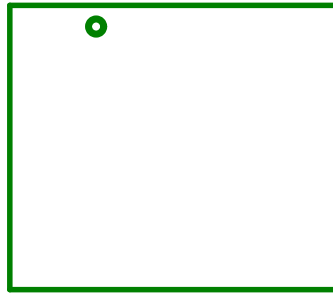
GPS



SX1302 LoRaWAN Gateway HAT



PWR TXD RXD PPS
 R9 LED4
 R7 LED3
 R6 LED2
 C9 LED1
 R8
 R1 R2
 R10 C5
 R4 C6
 C7
 U1 C2
 C1



R1
 R3
 L1
 R5
 C3
 C4



RFIO1

1.

C10
 C11
 C12

—



P2

—

SX1302 LoRaWAN Gateway HAT



RFIO2

GND D26 D19 D13 D6 D5 SDA0 GND SCK MISOMOSI 3V3 D22 D27 D17 GND D4 SCL SDA 3V3



P1



D21 D20 D16 GND D12 GND SCL0 CE1 CE0 D25 GND D24 D23 GND D18 RX TX GND 5V 5V