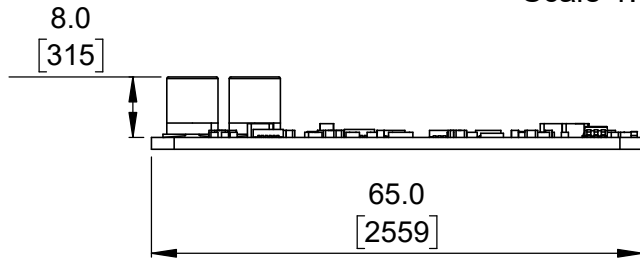
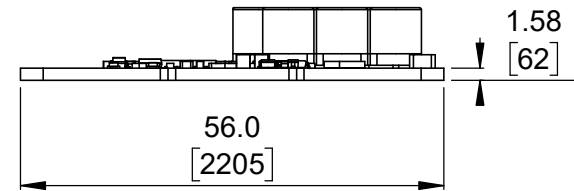


① Actual size  
Scale 1:1



③ Long profile  
Scale 1:1

② Isometric view  
Scale 1:1

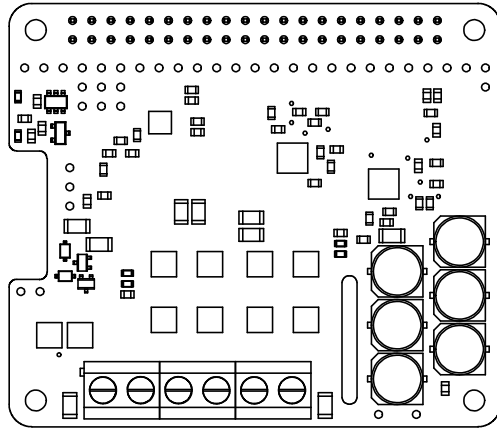


④ Short profile  
Scale 1:1

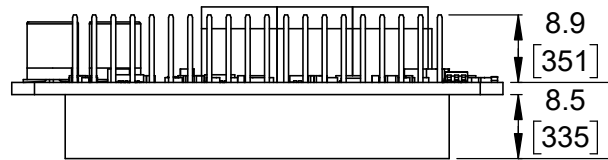
1. Surface-mount components vary between models.
2. To get the specified scale, select 100% in print settings.
3. Drill location tolerance:  $\pm 0.1$  [ $\pm 5$ ].
4. Board edge tolerance:  $\pm 0.3$  [ $\pm 10$ ].

<a href="https://www.pololu.com/catalog/category/293">https://www.pololu.com/catalog/category/293</a>	
Name: Motoron Dual High-Power Motor Controller for Raspberry Pi	Item number: 5048-5059
Drawing date: 5 August 2022	Dev code: mc2h31a, mc2h31b
Units: mm [mil]	Material: mixed

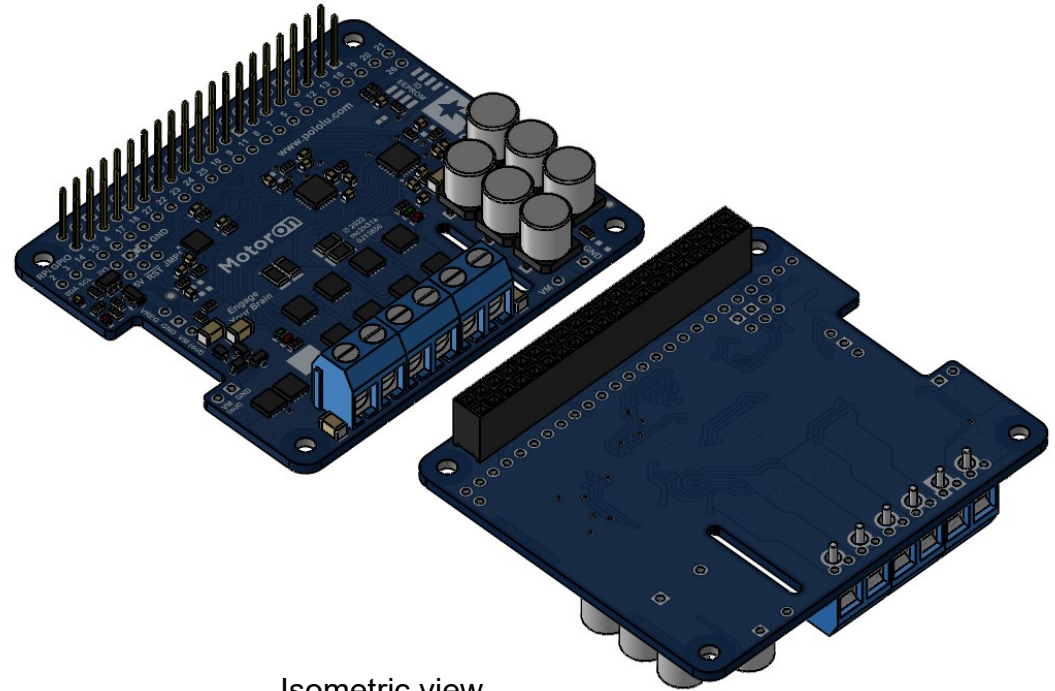




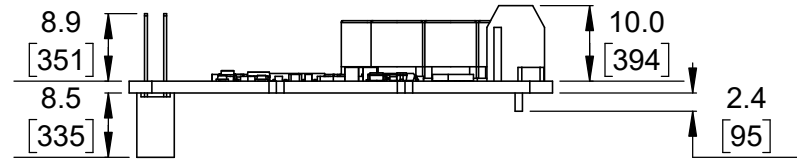
① Actual size  
(with included through-hole components)  
Scale 1:1



③ Long profile  
(with included through-hole components)  
Scale 1:1



② Isometric view  
(with included through-hole components)  
Scale 1:1

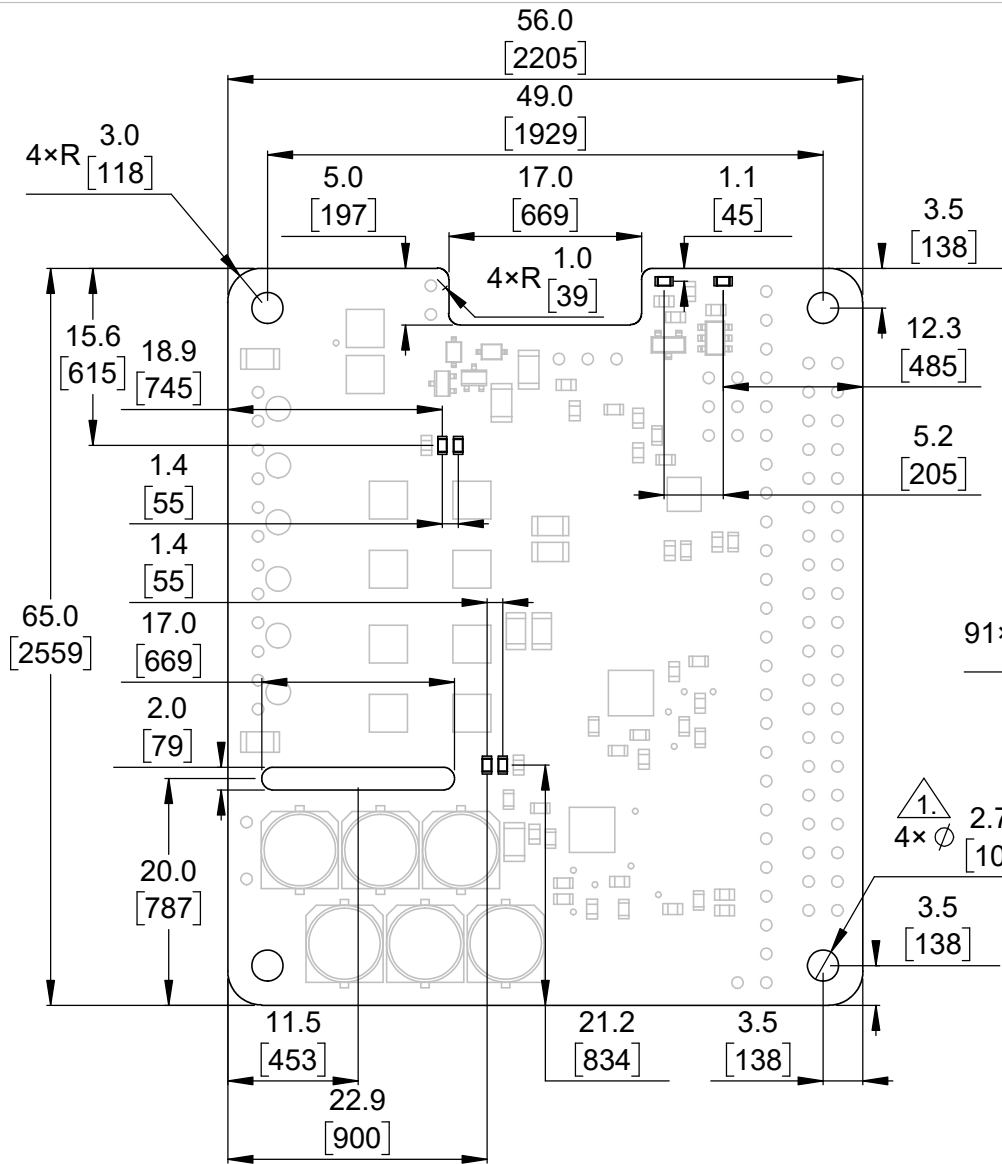


④ Short profile  
(with included through-hole components)  
Scale 1:1

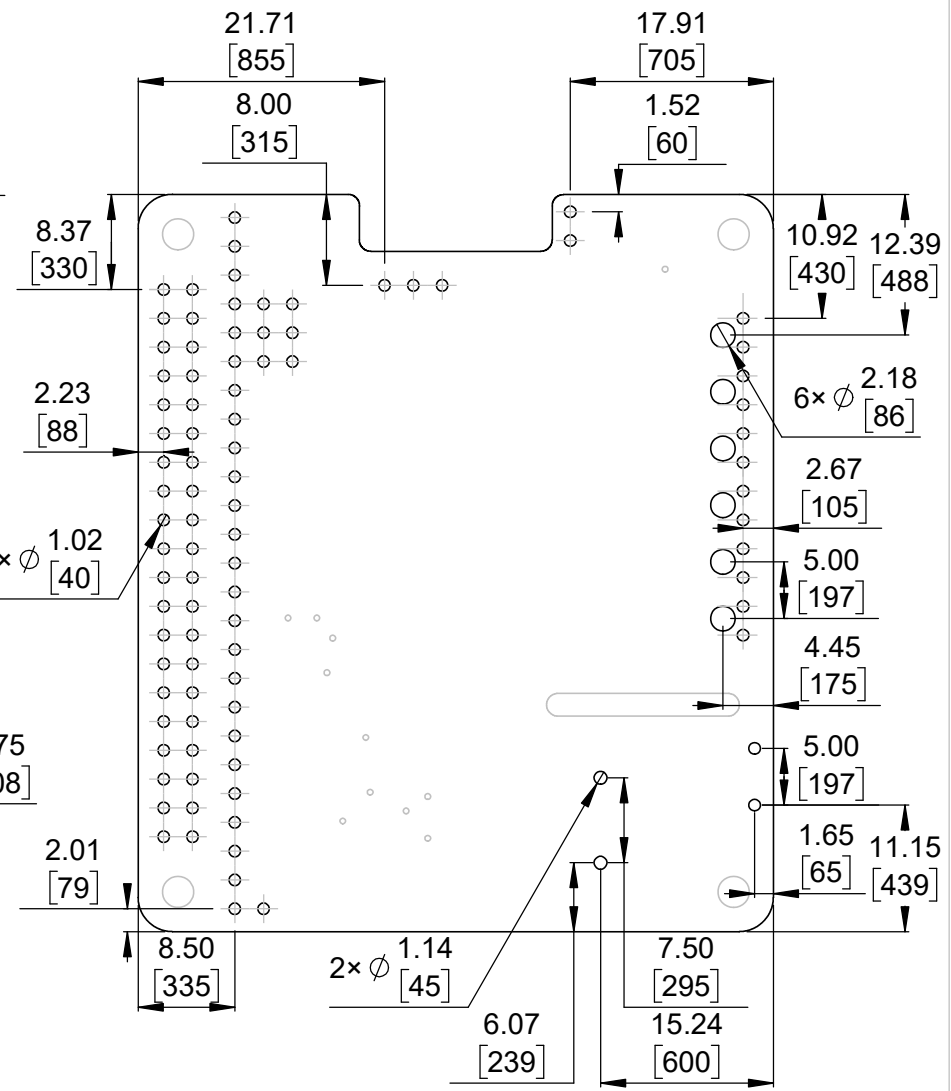
1. Surface-mount components vary between models.
2. To get the specified scale, select 100% in print settings.
3. Drill location tolerance:  $\pm 0.1$  [ $\pm 5$ ].
4. Board edge tolerance:  $\pm 0.3$  [ $\pm 10$ ].

<a href="https://www.pololu.com/catalog/category/293">https://www.pololu.com/catalog/category/293</a>	
Name: Motoron Dual High-Power Motor Controller for Raspberry Pi	Item number: 5048-5059
Drawing date: 5 August 2022	Dev code: mc2h31a, mc2h31b
Units: mm [mil]	Material: mixed





① Board dimensions (top view)  
Scale 3:2



② Connector callouts (bottom view)  
Scale 3:2

- 1. Intended for M2.5 screws.
- 2. Grid lines indicate 2.54mm [100 mil] spacing.
- 3. Surface-mount components vary between models.
- 4. To get the specified scale, select 100% in print settings.
- 5. Drill location tolerance:  $\pm 0.1$  [ $\pm 5$ ].
- 6. Board edge tolerance:  $\pm 0.3$  [ $\pm 10$ ].

<a href="https://www.pololu.com/catalog/category/293">https://www.pololu.com/catalog/category/293</a>	
Name: Motoron Dual High-Power Motor Controller for Raspberry Pi	Item number: 5048-5059
Drawing date: 5 August 2022	Dev code: mc2h31a, mc2h31b
Units: mm [mil]	Material: mixed

