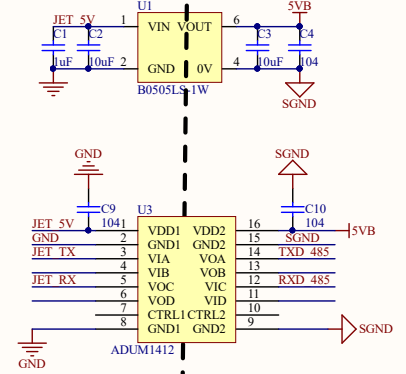
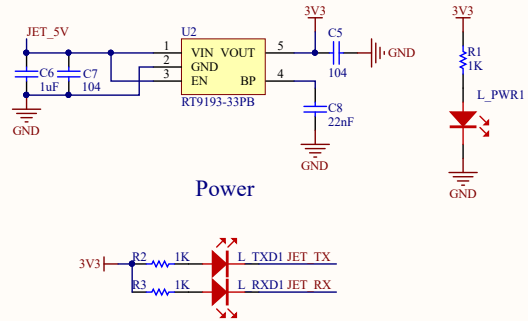


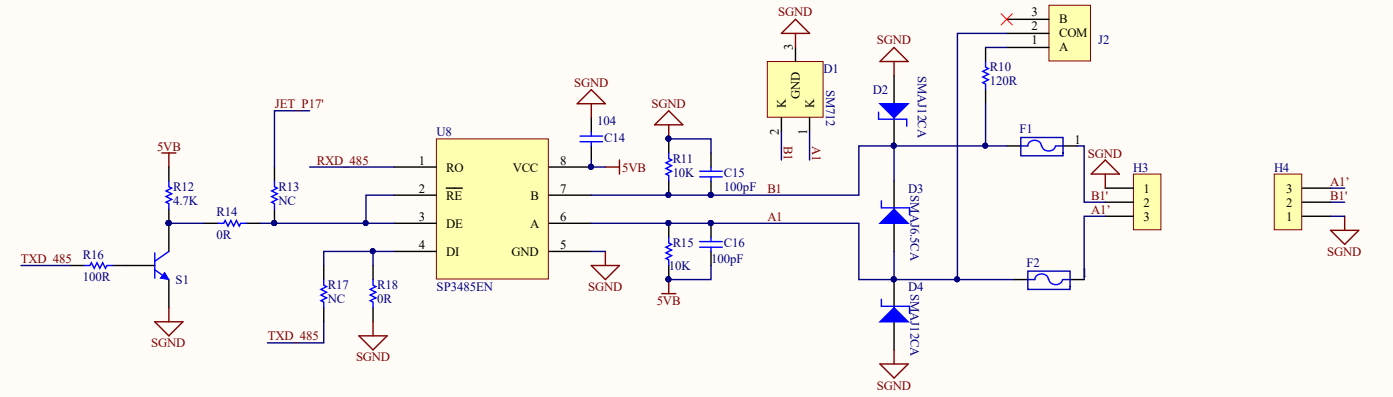
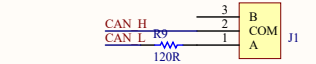
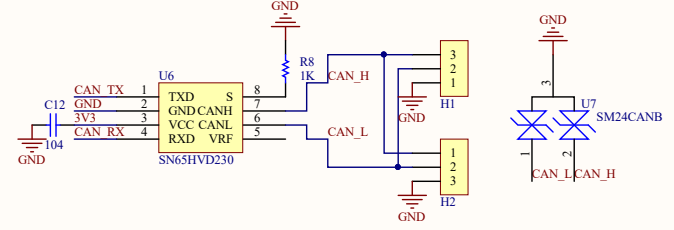
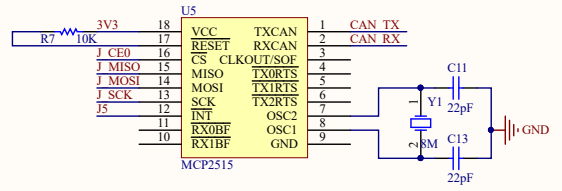
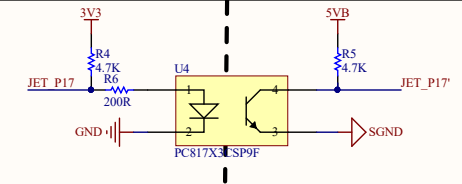
BCM/WPI			
1	1	1	
3	2	8	
5	3	9	
7	4	7	
9			
11	17	0	
13	27	2	
15	22	3	
17			
19	10	12	
21	9	13	
23	11	14	
25			
27	0	30	
29	5	21	
31	6	22	
33	13	23	
35	19	24	
37	26	25	
39			

P1				
1	3.3VDC	5V	JET_5V	
3	I2C_2_SDA	5V	JET_5V	
5	I2C_2_SCL	GND		
7	AUDIO_MCLK	UART_2_TX	8 JET_TX	
9	GND	UART_2_RX	10 JET_RX	
11	JET_P17	UART_2_RTS	12	
13		I2S_4_SCLK	14 GND	
15		SPI_2_SCK	GND	
17		LCD_TE	SPI_2_CS1	18
19	J_MOSI	3.3VDC	SPI_2_CS0	20
21	J_MISO	GND	GND	22
23	J_SCK	SPI_1_MISO	SPI_2_MISO	24 J_CE0
25	GND	SPI_1_SCK	SPI_1_CS1	26
27		GND	SPI_1_CS1	28
29	J5	I2C_1_SDA	I2C_1_SCL	30 GND
31		CAM_AF_EN	GND	32
33		CPIO_PZ0	LCD_BL_PWM	34 GND
35		CPIO_PZ6	GND	36
37		I2S_4_LRCK	UART_2_CTS	38
39		SPI_2_MOSI	I2S_4_SDIN	40
	GND	I2S_4_SDOUT		

BCM/WPI			
2	1	1	
4	1	1	
6	1	1	
8	14	15	
10	15	16	
12	18	1	
14			
16	23	4	
18	24	5	
20			
22	25	6	
24	8	10	
26	7	11	
28	1	31	
30			
32	12	26	
34			
36	16	27	
38	20	28	
40	21	29	



Jetson Nano Interface



RS485 CAN for Jetson Nano