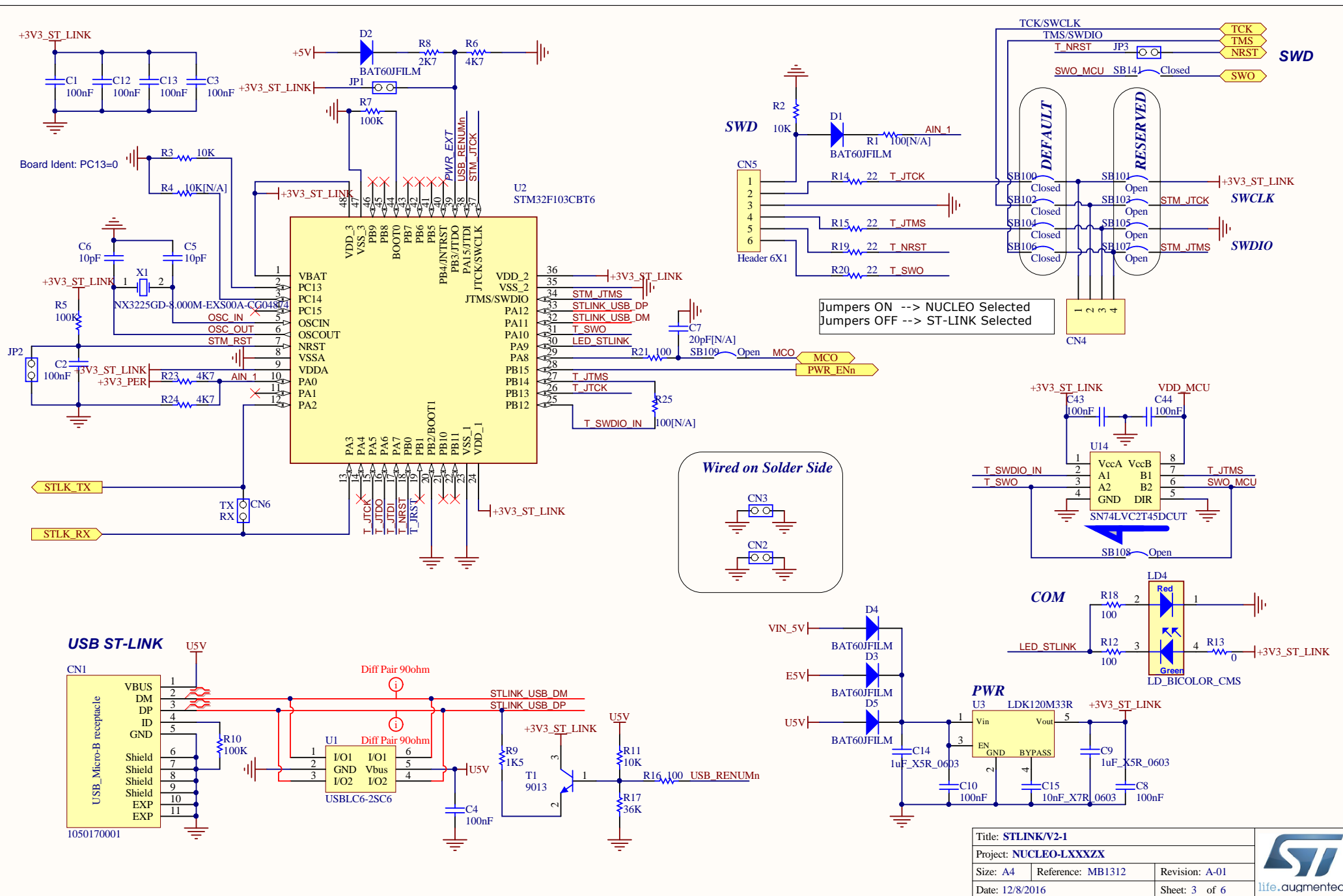


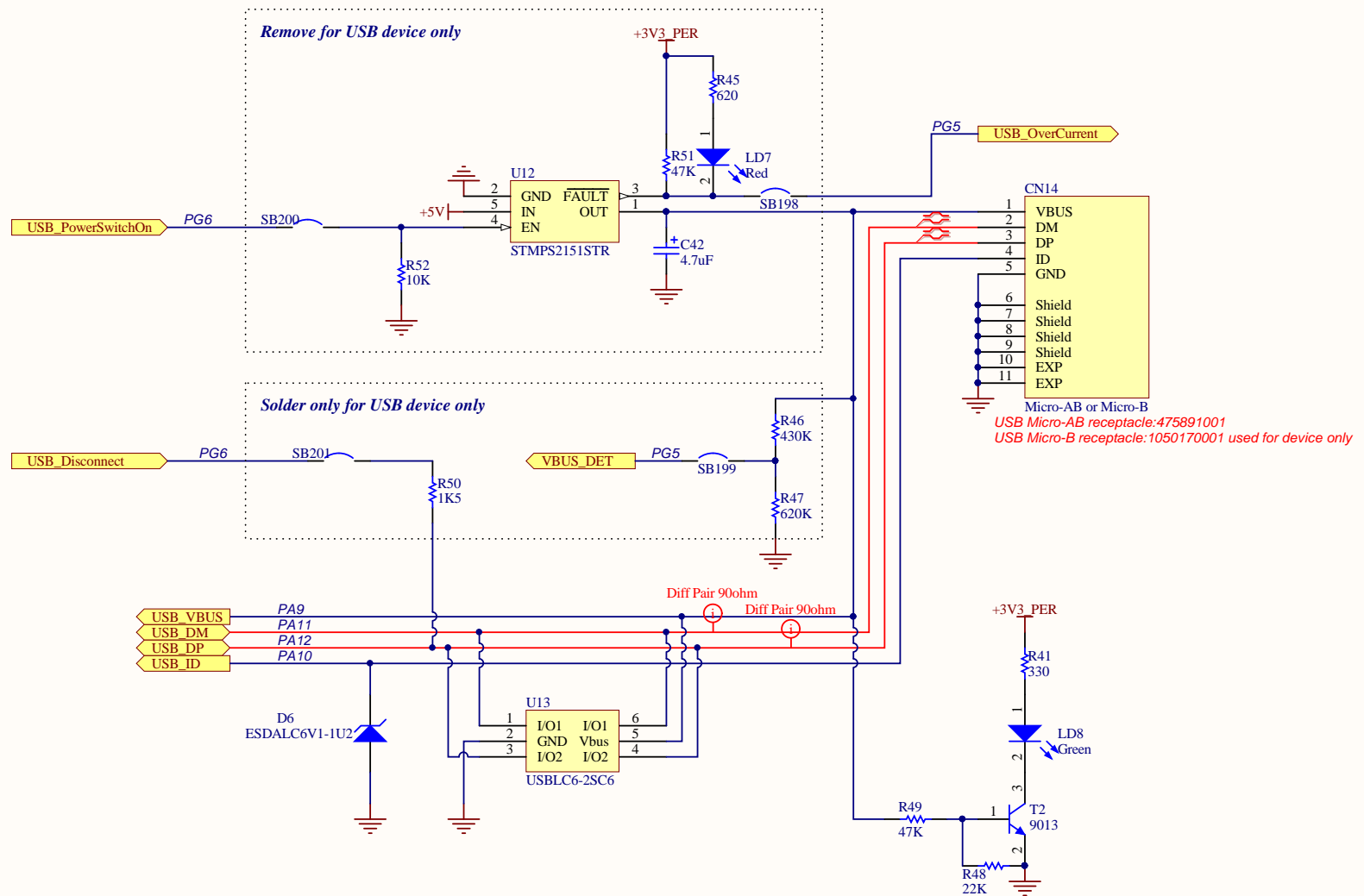
Power Switch to supply +5V
from STLINK USB

Note1: Text in italic placed on a wire does not correspond to net name. It just helps to identify rapidly Arduino's signal related to this wire.

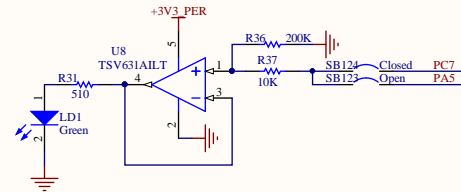
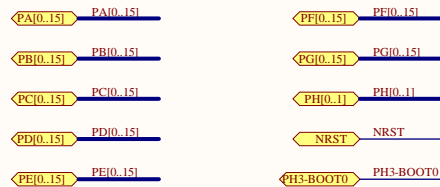
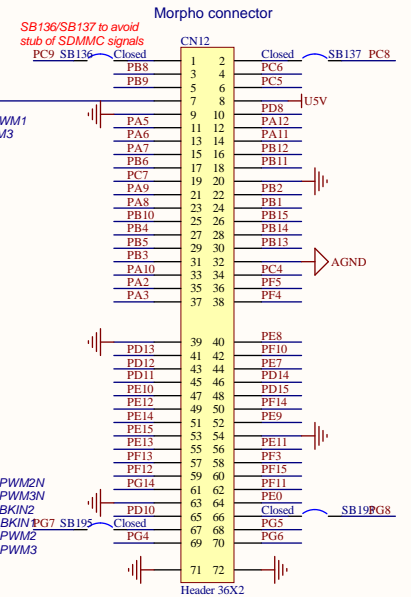
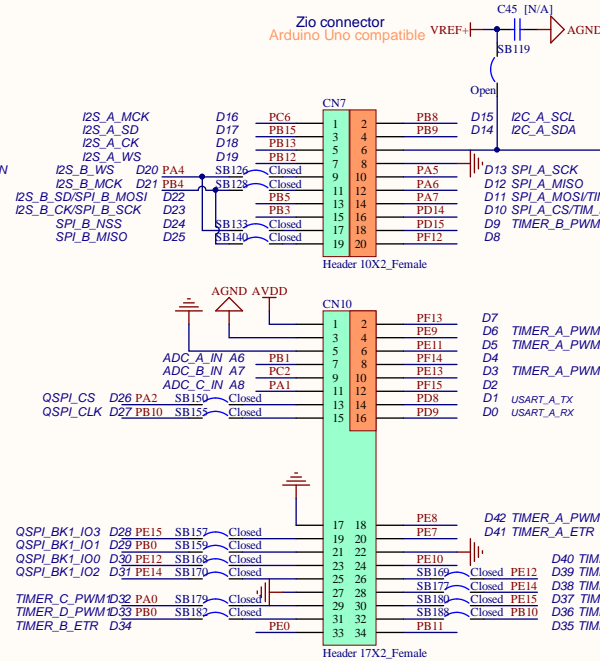
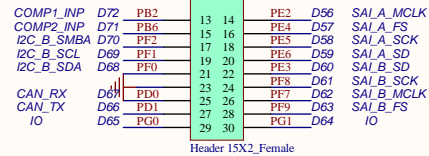
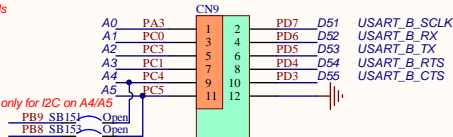
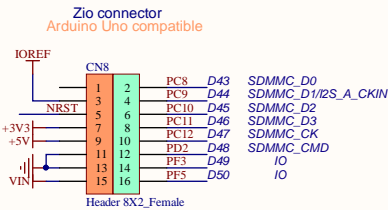
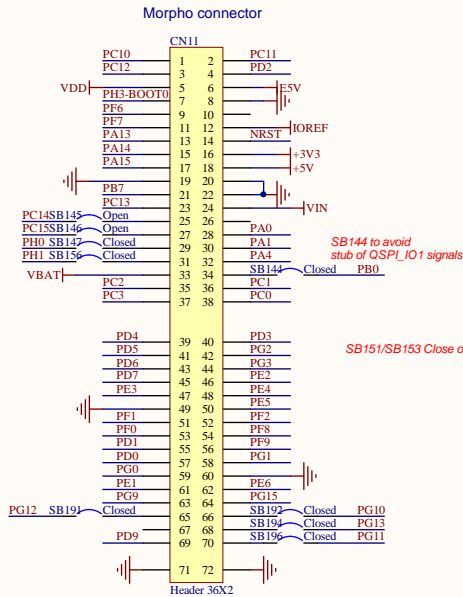
Title: TOP & POWER		
Project: NUCLEO-L432T		
Size: A4	Reference: MB1312	Revision: A-01
Date: 12/8/2016	Sheet: 1 of 6	







Extension connectors



Components mounted based on different board reference

